

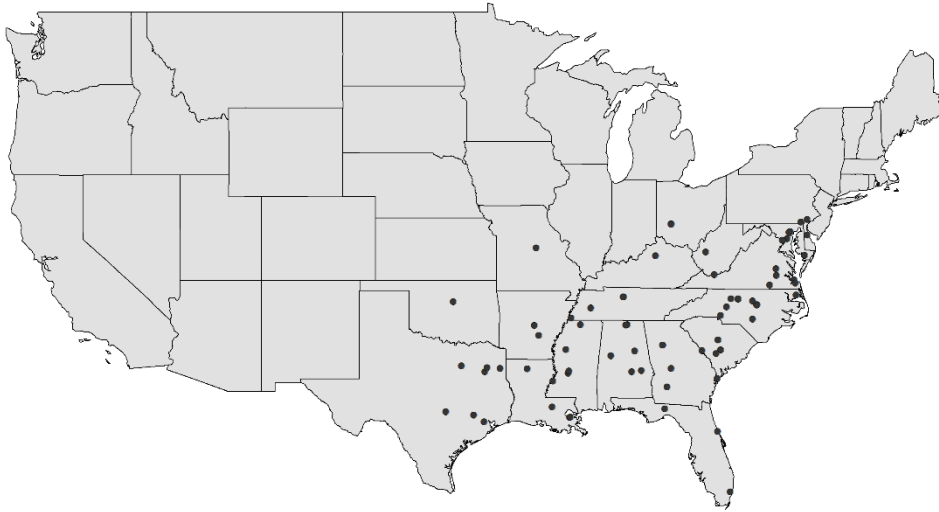
ON-LINE APPENDIX  
**UNEQUAL COLLEGES IN THE AGE OF DISPARITY**

**Charles T. Clotfelter**

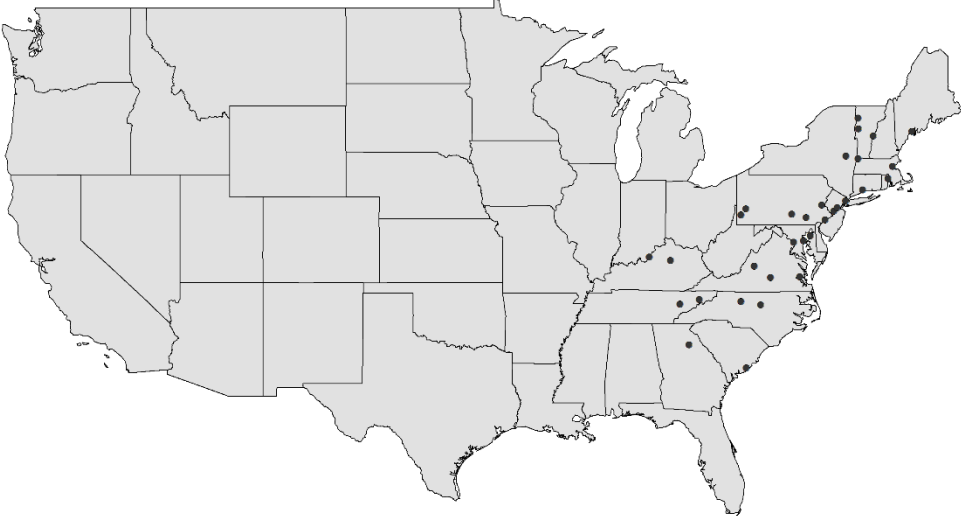
(Last updated May 5, 2017)

Chapter 2

**Appendix Figure 2.1. Location of HBCUs, 1970**



**Appendix Figure 2.2. Location of Colleges and Universities Founded before 1800**



## Appendix Table 2.1. Sources for 1970-Era College Catalogs Archived on the Web

Illinois State University	<a href="https://archive.org/details/coursecatalog19701971illi">https://archive.org/details/coursecatalog19701971illi</a>
Shepherd College	<a href="http://archive.org/details/coursecatalog19703shep_0">http://archive.org/details/coursecatalog19703shep_0</a>
Towson State College **	<a href="https://archive.org/details/coursecatalog1971tows">https://archive.org/details/coursecatalog1971tows</a>
Northeastern University	** <a href="https://archive.org/details/coursecatalog197172nort">https://archive.org/details/coursecatalog197172nort</a>
Lehigh University	<a href="https://archive.org/details/lehighcoursecata1970">https://archive.org/details/lehighcoursecata1970</a>
Millsaps College	<a href="https://archive.org/details/millsapscollegec1971mill">https://archive.org/details/millsapscollegec1971mill</a>
Susquehanna University	** <a href="https://archive.org/details/susquehannaunive71susq">https://archive.org/details/susquehannaunive71susq</a>
University of New Haven	** <a href="https://archive.org/details/universityofne197172univ">https://archive.org/details/universityofne197172univ</a>
Mary Washington College of UVA	** <a href="https://archive.org/details/bulletinmarywash26univ">https://archive.org/details/bulletinmarywash26univ</a>
American University **	<a href="https://archive.org/details/bulletincatalog1971amer">https://archive.org/details/bulletincatalog1971amer</a>
Ohio University	<a href="https://archive.org/details/ohiouniversitybu1970ohio">https://archive.org/details/ohiouniversitybu1970ohio</a>
Mansfield State College	<a href="https://archive.org/details/catalog1970197100mans">https://archive.org/details/catalog1970197100mans</a>
Southern Missionary College	<a href="https://archive.org/details/SouthernMissionaryCollegeCatalog1970-71">https://archive.org/details/SouthernMissionaryCollegeCatalog1970-71</a>
Memphis State University	<a href="https://archive.org/details/bulletinofmemphi11970unse">https://archive.org/details/bulletinofmemphi11970unse</a>
University of Southern Mississippi	<a href="https://archive.org/details/universityofsoutv57n4univ">https://archive.org/details/universityofsoutv57n4univ</a>
Savannah State	<a href="https://archive.org/details/savannahstatebul51970sava">https://archive.org/details/savannahstatebul51970sava</a>
University of Scranton	<a href="https://archive.org/details/undergraduatecat1970univ">https://archive.org/details/undergraduatecat1970univ</a>
Virginia Wesleyan University	<a href="https://archive.org/details/westvirginiawes119701971west">https://archive.org/details/westvirginiawes119701971west</a>
University of Illinois at Chicago Circle	<a href="https://archive.org/details/catalog197071univ">https://archive.org/details/catalog197071univ</a>
Kansas State University	<a href="https://archive.org/details/generalcatalo197071kans">https://archive.org/details/generalcatalo197071kans</a>
Augusta College	<a href="https://archive.org/details/augustacollegeca1970augu">https://archive.org/details/augustacollegeca1970augu</a>
Oglethorpe University	<a href="https://archive.org/details/oglethorpecolleg7071ogle">https://archive.org/details/oglethorpecolleg7071ogle</a>
Florida Memorial College	* <a href="https://archive.org/details/floridamemorials28flor">https://archive.org/details/floridamemorials28flor</a>
Indiana University of Pennsylvania	<a href="https://archive.org/details/undergraduatecat1970indi">https://archive.org/details/undergraduatecat1970indi</a>
University of Maryland College Park	<a href="https://archive.org/details/undergraduatecon1970univ">https://archive.org/details/undergraduatecon1970univ</a>
Trevecca Nazarene College	<a href="https://archive.org/details/treveccanazarene1970trev">https://archive.org/details/treveccanazarene1970trev</a>
Elon College ##	<a href="https://archive.org/details/bulletinofelon823854elon">https://archive.org/details/bulletinofelon823854elon</a>
La Salle College	<a href="https://archive.org/details/lasallecollegebu02unse">https://archive.org/details/lasallecollegebu02unse</a>
William Carey College	* <a href="https://archive.org/details/williamcareycoll7072unse">https://archive.org/details/williamcareycoll7072unse</a>
West Chester State College	<a href="https://archive.org/details/westchesterstate1970west">https://archive.org/details/westchesterstate1970west</a>
Eastern Kentucky	** <a href="https://archive.org/details/catalog19717262east">https://archive.org/details/catalog19717262east</a>
Lee University **	<a href="https://archive.org/details/leeuniversityca197172leeu">https://archive.org/details/leeuniversityca197172leeu</a>
Taylor University 1971-1973	<a href="https://archive.org/details/tayloruniversity7173tayl">https://archive.org/details/tayloruniversity7173tayl</a>
Michigan State University	<a href="https://www.reg.msu.edu/Read/DescCourses/1970/Courseinfo.pdf">https://www.reg.msu.edu/Read/DescCourses/1970/Courseinfo.pdf</a>
Elmira College	<a href="http://www.amazon.com/Elmira-College-Bulletin-Catalog-/dp/B00EVUFMV2">http://www.amazon.com/Elmira-College-Bulletin-Catalog-/dp/B00EVUFMV2</a>
Florida State University	<a href="http://www.fscj.edu/catalogs/1970_1971/1970_71_sec4.pdf">http://www.fscj.edu/catalogs/1970_1971/1970_71_sec4.pdf</a>

Columbia College Chicago  
[http://digitalcommons.colum.edu/cgi/viewcontent.cgi?article=1049&context=cadc\\_coursescatalogs](http://digitalcommons.colum.edu/cgi/viewcontent.cgi?article=1049&context=cadc_coursescatalogs)

Widener University  
<http://digitalwolfgram.widener.edu/cdm/ref/collection/p16069coll22/id/88>

Fairfield University <http://archive.org/stream/artssci7071fair#page/n0/mode/2up>

Wright State University [http://corescholar.libraries.wright.edu/archives\\_catalogs/7/](http://corescholar.libraries.wright.edu/archives_catalogs/7/)

Mercy College of Detroit  
[http://research.udmercy.edu/find/special\\_collections/digital/catalogs/item.php?record\\_id=99&collectionCode=bulletins\\_bul&start=80](http://research.udmercy.edu/find/special_collections/digital/catalogs/item.php?record_id=99&collectionCode=bulletins_bul&start=80)

Western Maryland College <http://hoover.mcdaniel.edu/archives/Catalog/cat1970-71.pdf>

San Diego State University <http://library.sdsu.edu/scua/online-materials/course-catalogs>

University of Vermont  
<https://www.uvm.edu/~rgweb/?Page=catalogue/catalogue.html>

UC Davis <http://catalog.ucdavis.edu/upload/GenCatArchive/GenCat19701971.pdf>

Massachusetts Institute of Technology <http://dome.mit.edu/handle/1721.3/98441>

Bellevue College [http://s.bellevuecollege.edu/wp/sites/108/2014/05/\\*\\*-course-catalog.pdf](http://s.bellevuecollege.edu/wp/sites/108/2014/05/**-course-catalog.pdf)

UCLA <http://www.registrar.ucla.edu/archive/catalog/70-71catalog.pdf>

Hardin Simmons University <http://texashistory.unt.edu/ark:/67531/metaph41590/>

DePaul University <http://www.depaul.edu/university-catalog/catalog-archive/Pages/default.aspx>

Georgia Tech <https://smartech.gatech.edu/handle/1853/39207>

Valencia College <http://valenciacollege.edu/catalog/>

University of Arkansas <http://library.uark.edu/record=b1505740~S0>

Calvin College <http://www.calvin.edu/academic/services/catalog/archive/>

Howard Payne College  
<https://texashistory.unt.edu/ark:/67531/metaph46512/?q=howard%20payne%20college%201970>

Galveston College <http://www.gc.edu/gc/Catalogs.asp>

East Carolina University <http://digital.lib.ecu.edu/special/ead/findingaids/UA50-02/>

University of Utah <http://content.lib.utah.edu/cdm/ref/collection/ir-eua/id/182>

University of Illinois at Springfield  
[http://collections.carli.illinois.edu/cdm4/item\\_viewer.php?CISOROOT=/uis\\_cmparch&CISOPTR=78&CISOBOX=1&REC=2](http://collections.carli.illinois.edu/cdm4/item_viewer.php?CISOROOT=/uis_cmparch&CISOPTR=78&CISOBOX=1&REC=2)

Galveston College  
[http://collections.carli.illinois.edu/cdm4/item\\_viewer.php?CISOROOT=/uis\\_cmparch&CISOPTR=78&CISOBOX=1&REC=2](http://collections.carli.illinois.edu/cdm4/item_viewer.php?CISOROOT=/uis_cmparch&CISOPTR=78&CISOBOX=1&REC=2)

George Mason University  
[https://tuscan.gmu.edu/depts/registrar/registrar.gmu.edu/wp-content/uploads/Mason\\_1970\\_71.pdf](https://tuscan.gmu.edu/depts/registrar/registrar.gmu.edu/wp-content/uploads/Mason_1970_71.pdf)

University of Maine at Portland-Gorham \*\*  
[http://digitalcommons.usm.maine.edu/cgi/viewcontent.cgi?article=1006&context=archives\\_catalogs](http://digitalcommons.usm.maine.edu/cgi/viewcontent.cgi?article=1006&context=archives_catalogs)

Ohio State University \*\* [http://registrar.osu.edu/scheduling/bulletins\\_old.asp](http://registrar.osu.edu/scheduling/bulletins_old.asp)

Bowling Green State University \*\*  
<http://scholarworks.bgsu.edu/cgi/viewcontent.cgi?article=1022&context=catalogs>

Columbia College Missouri \* [https://www.ccis.edu/day/academics/ug\\_catalog-day/archives/\\*%20Columbia%20College%20Course%20Catalog.pdf](https://www.ccis.edu/day/academics/ug_catalog-day/archives/*%20Columbia%20College%20Course%20Catalog.pdf)

Barry University \*\* [https://barryustorage.blob.core.windows.net/assets/docs/registrar/\\*\\*%20catalog.pdf](https://barryustorage.blob.core.windows.net/assets/docs/registrar/**%20catalog.pdf)

University of Washington Seattle  
<http://www.washington.edu/students/genecat/archive/>

Tennessee State \* [http://www.tnstate.edu/library/documents/1971\\_73.pdf](http://www.tnstate.edu/library/documents/1971_73.pdf)

St. Francis College <http://www.sfc.edu/page.cfm?p=4067>

Eastern Michigan University <http://commons.emich.edu/catalog/105/>

Amherst College  
[https://archive.org/stream/catalog1970amhe/catalog1970amhe\\_djvu.txt](https://archive.org/stream/catalog1970amhe/catalog1970amhe_djvu.txt)

Philadelphia College School of Art <https://archive.org/details/schoolcatal197071phil>

Clarion State College <https://archive.org/details/clarionstatecoll1971clar>

College of William and Mary <https://archive.org/details/bulletinofcolleg657coll>

Armstrong State College <https://archive.org/details/bulletin7071arms>

Bridgewater State College \*\* <https://archive.org/details/bridgewaterstate1971brid>

Bowdoin College \*\* <http://digitalcommons.bowdoin.edu/course-catalogues/252/>

Brandeis College <https://archive.org/details/generalcatalog7071bran>

Wellesley College  
<http://repository.wellesley.edu/cgi/viewcontent.cgi?article=1068&context=catalogs>

California Institute of Technology  
[http://caltechcampuspubs.library.caltech.edu/view/publication/Caltech\\_Catalog.html#group\\_1970](http://caltechcampuspubs.library.caltech.edu/view/publication/Caltech_Catalog.html#group_1970)

Bloomsburg State College  
[http://archive.org/stream/bloomsb70bloo/bloomsb70bloo\\_djvu.txt](http://archive.org/stream/bloomsb70bloo/bloomsb70bloo_djvu.txt)

Meredith College <https://archive.org/details/meredithcollegeb1970mere>

Boston College <https://archive.org/details/bostoncollegeart7071bost>

Stetson University <https://archive.org/details/stetsonuniversit84stet>

Oakwood College <https://archive.org/details/oakwoodbulletin197071oakw>

UMass Amherst \*\* <https://archive.org/details/generalinformati7172univ>

Davidson College <https://archive.org/details/davidsoncollegec19701971>

Tennessee Wesleyan University \*  
<https://archive.org/details/tennesseewes47197072tenn>

Maryville College <https://archive.org/details/maryvillecollege7071mary>

Monmouth College <https://archive.org/details/monmouthcoll197071monm>

The Citadel <https://archive.org/details/catalogofcitadel1970cita>

Lebanon Valley College <http://www.mocavo.com/Lebanon-Valley-College-Catalog-Volume- /164276/130>

Eckerd College # <https://archive.org/details/eckerdcollege197273ecke>

University of St. Louis ["https://www.umsl.edu/library/university-archives/Bulletins-Course%20Catalogs/Bulletin,%20 .pdf"](https://www.umsl.edu/library/university-archives/Bulletins-Course%20Catalogs/Bulletin,%20 .pdf)

Farmingdale State College <http://www.farmingdale.edu/library/1970-71.pdf>

Elizabeth City State University [http://archive.org/stream/elizabethcitysta19691972/elizabethcitysta19691972\\_djvu.txt](http://archive.org/stream/elizabethcitysta19691972/elizabethcitysta19691972_djvu.txt)

Fayetteville State University [https://archive.org/stream/fayettevillestat19701972/fayettevillestat19701972\\_djvu.txt](https://archive.org/stream/fayettevillestat19701972/fayettevillestat19701972_djvu.txt)

University of Florida [https://archive.org/stream/universityrecord653univ/universityrecord653univ\\_djvu.txt](https://archive.org/stream/universityrecord653univ/universityrecord653univ_djvu.txt)

Lincoln University of Pennsylvania \* <http://www.lincoln.edu/library/specialcollections/CATALOGUES/1970-72.pdf>

Wake Forest University [https://archive.org/stream/bulletinofwakefo19701971/bulletinofwakefo19701971\\_djvu.txt](https://archive.org/stream/bulletinofwakefo19701971/bulletinofwakefo19701971_djvu.txt)

Westfield State College [https://archive.org/stream/westfieldstateco1970west/westfieldstateco1970west\\_djvu.txt](https://archive.org/stream/westfieldstateco1970west/westfieldstateco1970west_djvu.txt)

Columbia College Chicago [http://network.bepress.com/explore/?facet=publication\\_type%3A%22Series%22&facet=institution\\_title%3A%22Columbia+College+Chicago%22&facet=publication\\_facet%3A%22Course+Catalogs%22&start=30](http://network.bepress.com/explore/?facet=publication_type%3A%22Series%22&facet=institution_title%3A%22Columbia+College+Chicago%22&facet=publication_facet%3A%22Course+Catalogs%22&start=30)

Franklin Pierce University <http://library.franklin Pierce.edu/chronology/media/presidentsreport1970-1a.pdf>

Mount St. Mary's College [http://archive.org/stream/19701971catalog00msmr/19701971catalog00msmr\\_djvu.txt](http://archive.org/stream/19701971catalog00msmr/19701971catalog00msmr_djvu.txt)

West Virginia Wesleyan College [http://archive.org/stream/westvirginiawesl19701971west/westvirginiawesl19701971west\\_djvu.txt](http://archive.org/stream/westvirginiawesl19701971west/westvirginiawesl19701971west_djvu.txt)

La Grange College [https://archive.org/stream/lagrangecollegeb1970lagr/lagrangecollegeb1970lagr\\_djvu.txt](https://archive.org/stream/lagrangecollegeb1970lagr/lagrangecollegeb1970lagr_djvu.txt)

Wichita State University [http://soar.wichita.edu/bitstream/handle/10057/2386/WSUCATALOG\\_8.pdf.txt?sequence=2](http://soar.wichita.edu/bitstream/handle/10057/2386/WSUCATALOG_8.pdf.txt?sequence=2)

Madonna University <http://www.madonna.edu/pdf/Academics/ugsupplement70-71.pdf>

Montreat-Anderson College [https://archive.org/stream/montreatandcat19701971/montreatandcat19701971\\_djvu.txt](https://archive.org/stream/montreatandcat19701971/montreatandcat19701971_djvu.txt)

Marylhurst University <http://docs.marylhurst.edu/mu/pdflibrary/CAT-1969-71MarylhurstCatalog.pdf>

McMurry University <http://texashistory.unt.edu/ark:/67531/metaph86207/>

North Carolina Wesleyan College <https://archive.org/details/northcarolinawes19701971>

Saint Leo University            <https://archive.org/details/saintleouniversity>  
 Bethany College            \*\*\*  
                                  [https://archive.org/stream/bethanycollegeb196972beth/bethanycollegeb196972beth\\_djvu.txt](https://archive.org/stream/bethanycollegeb196972beth/bethanycollegeb196972beth_djvu.txt)  
 Chapman University            [http://www.mocavo.com/Centenary-College-of-Louisiana-Catalogue- -Volume- /999979/39](http://www.mocavo.com/Centenary-College-of-Louisiana-Catalogue--Volume-/999979/39)  
 Appalachian State University  
                                  [http://archive.org/stream/generalcatalog03appa/generalcatalog03appa\\_djvu.txt](http://archive.org/stream/generalcatalog03appa/generalcatalog03appa_djvu.txt)  
 Cedarville College            [http://publications.cedarville.edu/academiccatalogs/  
 /files/assets/basic-html/toc.html](http://publications.cedarville.edu/academiccatalogs/files/assets/basic-html/toc.html)  
 Sweet Briar College            [http://www.mocavo.com/Sweet-Briar-College-Catalogue- -  
 Volume-1970/736462/57](http://www.mocavo.com/Sweet-Briar-College-Catalogue--Volume-1970/736462/57)  
 Misericordia University            [http://www.mocavo.com/Undergraduate-Catalog-  
 Misericordia-University- /263394/9](http://www.mocavo.com/Undergraduate-Catalog-Misericordia-University-/263394/9)  
 Southern Utah State College            [http://www.suu.edu/academics/catalog/pre2000/ \\*.pdf](http://www.suu.edu/academics/catalog/pre2000/*.pdf)  
 University of Kentucky            [http://eris.uky.edu/catalog/xt70p26q0b4m\\_1?](http://eris.uky.edu/catalog/xt70p26q0b4m_1?)

Accessed May 3, 2017

York C of Pennsylvania            [https://archive.org/details/yorkcollege19701971york,](https://archive.org/details/yorkcollege19701971york)

Note: Except where noted, all catalogs are for the 1970/71 academic year. \*indicates catalogs for 1970-1972; \*\*indicates catalogs for the 1971/72 academic year; \*\*\*indicates catalogs for the 1969/70 academic year; # indicates catalogs for the 1972/73 academic year; ## indicates a catalog for 1970-1974.

## **The Panel of 1,175 Four-Year Colleges and Their Corresponding 1970-Era SAT Percentiles**

### 1970-Era Data for Test Scores

The objective was to collect test score and enrollment information for all American colleges and universities that offered four-year bachelor degrees over the period 1970 to 2010. Starting with the 2010 IPEDS database, the following categories of institutions were eliminated: non-US institutions; those not in the “Public, 4-year or above” or “Private not-for-profit, 4-year or above” sectors; institutions without a reported institutional category or were categorized as post-baccalaureate institutions (“Degree-granting, graduate with no undergraduate” and “Nondegree-granting, above the baccalaureate”); institutions that were not in the Carnegie universe; those coded as Associate’s institutions; and those coded as special-purpose institutions like seminaries, medical schools, art schools, etc.

Because no data set contains test score data for all four-year colleges in 1970, it was necessary to consult multiple sources of 1970-era score information. Preference was given to information for the 1970-71 school year. Means were preferred to medians or other distributions. By order of preference, the sources were: 1) *Comparative Guide to American Colleges: Professional and Guidance Edition*. James Cass and Max Birnbaum (eds.), 5<sup>th</sup> ed. Harper & Row: New York, 1972. (Data from 1970-71 freshman class); 2) *Comparative Guide to American Colleges*. James Cass and Max Birnbaum (eds.) 6<sup>th</sup> ed. Harper & Row: New York, 1973. (Data from 1972-73 freshman class); 3) *Barron’s Profiles of American Colleges*. Benjamin Fine (ed.) 1971-72 edition. Barron's Educational Series, Inc.: Woodbury, NY.; 4) Astin, Alexander W., *Predicting Academic Performance in College: Selectivity Data for 2300 American Colleges*. The Free Press: New York, 1971. (Most data from sources published in 1967 or 1968)

Once complete score information was found for an institution, no further sources were consulted. A complete score record included a score for the whole student body and enrollment information. Separate scores reported for men and women was acceptable, but scores broken out by college or for only a subset of students required further searching.

Many institutions changed their names between 1970 and 2010. Sources for old names included Wikipedia articles and the schools’ websites. If an alternative name was discovered at any point during the process, each of the more preferred sources were checked using the newly discovered name.



Excluded from the sample were institutions that did not exist in 1970 or did not exist as a four-year, bachelors-granting independent institution (such as a two-year college, a theological school or some other specialized degree granting school), or was a satellite or branch of another school.

Occasionally institutions changed structure during the 40-year period, either merging or splitting. When today's institution was formed by a merger after 1970, the scores were generally taken from the most prominent predecessor. When one predecessor was a women's college and one was a men's college, both scores were used as if scores had been reported separately for men and women. When the current institution was a part of a larger university but only one older record was found, the 1970 score was assigned to the main university campus, even if the institution had been reporting all-university average scores. The branch campuses did not receive scores unless they were reported separately.

A complete score was defined as an exact score for either ACT or SAT covering all of the students. It was assumed that the scores given when all students were not required to submit them did not cover all students.

If there was no single all-student, complete, exact score but there was some score information, the partial score information in the most preferred book was utilized. Examples of partial score information are score ranges (the midpoint was used), scores by colleges (a weighted average of the colleges was used, where bachelors-seeking freshmen enroll), and scores for those students that were required to submit but not the whole student body (the group required was noted in the correct column).

#### Expressing Scores Comparable to Current SAT

The methodology above yielded in a data set that included school-level ACT and/or SAT scores, sometimes separated by men's and women's scores or subjects (verbal or math). Next, these various reported scores were combined to create one score per institution. When universities reported scores separately for math and verbal, these were added to create SAT scores on a 1600 point scale and ACT scores on a 36 point scale. ACT scores were converted to SAT scores using a published table developed from a sample of nearly 39,000 students who

entered college as freshmen in 1965 and who took more than one standardized test prior to admission (Astin 1971).<sup>1</sup>

In 1995 the College Board “re-centered” SAT scores in order to be closer to a 500 average for each subject test, which resulted in raising older scores. Therefore 1970-era scores were converted so as to be comparable to the post-re-centered scores reported in 2010. The charts used to accomplish this conversion were “Mean Score Equivalents” for SAT and “V+M Composites” for converted ACT scores.<sup>2</sup>

When scores were reported separately by gender, these were combined after re-centering, using enrollments by gender (provided in the same 1970-era college guides) as weights in the case of male and female scores. When a college provided both an ACT and a SAT score, the required or preferred one was used, even if only some students (like out-of state-students) were required to submit the score. If both or neither were required (or either accepted), the two were averaged after converting the ACT score to an SAT equivalent.

To obtain weighted averages, enrollment from the 1972 HEGIS reports was used rather than enrollment from the 1970-era college guides. Using the reported variable “FT Degree-Credit Residential Undergraduates” (Line I.A.1.c. of HEGIS form), the separately-reported enrollments of men and women were added.<sup>3</sup>

### Enrollment-weighted Percentiles

A principal criterion for classifying institutions was their enrollment percentile ranking of SAT. Institutions were ranked by 1970-era SAT. Then percentiles were calculated based on cumulative enrollments in this list. For example, Illinois State University, with its 1094 average SAT in 1970, ranked 636th among 1,157 institutions in 1970. Those institutions with lower scores than Illinois Sate enrolled 45.2% of all students. Consequently, Illinois State was included in the group for public institutions with 0-50<sup>th</sup> percentile SATs in 1970. This method is convenient for dealing with ties, since each institution that has the same SAT score has the same percentile and is placed in the same group.

---

<sup>1</sup> “Table 3-1: Conversion of American College Test (ACT) Scores Into Equivalent Scores on the Scholastic Aptitude (SAT) and National Merit Scholarship Qualifying (NMSQT) Tests” Predicting Academic Performance in College: Selectivity Data for 2300 American Colleges. The Free Press: New York, 1971.

<sup>2</sup> “Equivalence Tables” Available at: <http://research.collegeboard.org/programs/sat/data/equivalence> Accessed June 1, 2015.

<sup>3</sup> Data were matched between IPEDS and HEGIS using as unique identifiers the IPEDS unitid and FICE number.

## 2010 Data

The primary source for 2010 SAT data is IPEDS. Generally, scores for the 1,157 schools in the study come from IPEDS 2010. When not available, scores for 2009, 2008, or 2007 (in that order) were used.<sup>4</sup> Note that in the 2010 data set, some schools reported Fall 2010 scores, while others actually reported Fall 2009 scores in this dataset. Regardless of this, about 78 schools did not have scores.

IPEDS provides SAT and ACT scores at the 25<sup>th</sup> and 75<sup>th</sup> percentiles. The mean of these were used to approximate school average score. When a school had both an ACT and a SAT score in IPEDS, a weighted average based on the percentage of students reporting each was taken. If the school reported a percentage of students reporting a score, but the score is not listed, older years' scores were used only for that particular score.

To convert ACT scores to SAT scores, the concordance tables published by ACT in the ACT-SAT Concordance Study, June 2008, was used.<sup>5</sup> When a school reported scores below 11 (not on crosswalk) a linear interpolation was used, based on 400 (SAT) and 1 (ACT) being the lowest possible scores. Since this conversion applied to post-1995 scores, there was no need to re-center these scores.

---

<sup>4</sup> Most scores (1,050) come from 2010.

<sup>5</sup> "ACT-SAT Concordance: A Tool for Comparing Scores" ACT-SAT Concordance Study: June 2008. Available at: <http://www.act.org/aap/concordance/pdf/reference.pdf>. Accessed June 1, 2015.

## 1,157 Colleges and Universities, by College Category

### PRIVATE COLLEGES AND UNIVERSITIES

		2010
Private, 0-25 %	State	enrollment
<b>Adrian College</b>	MI	1,629
Alaska Pacific University	AK	263
Alderson Broaddus College	WV	529
Alvernia University	PA	1,649
Anderson University	IN	1,838
Asbury University	KY	1,297
Averett University	VA	860
Avila University	MO	938
Azusa Pacific University	CA	4,708
Baker University	KS	1,194
Barton College	NC	871
Belmont Abbey College	NC	1,609
Belmont University	TN	4,258
Bentley University	MA	4,055
<b>Berea College</b>	KY	1,551
Berry College	GA	1,882
Bethel University	TN	1,876
Bloomfield College	NJ	1,829
Blue Mountain College	MS	485
Bluffton University	OH	855
Brenau University	GA	1,105
Brescia University	KY	461
Brigham Young University-Hawaii	HI	2,612
Bryan College-Dayton	TN	1,030
Bryant University	RI	3,224
Cabrini College	PA	1,309
Caldwell College	NJ	1,235
California Baptist University	CA	3,353
Calumet College of Saint Joseph	IN	546
Campbell University	NC	3,253
Campbellsville University	KY	1,816
<b>Cardinal Stritch University</b>	WI	2,790
Carson-Newman College	TN	1,665
Central Methodist University-College of Liberal Arts & Sciences	MO	1,125
Chaminade University of Honolulu	HI	1,429
Charleston Southern University	SC	2,430

Christian Brothers University	TN	1,190
College of Our Lady of the Elms	MA	802
College of St Joseph	VT	165
College of the Ozarks	MO	1,359
Columbia College	MO	923
Columbia College	SC	9,733
Columbia International University	SC	529
Concordia University-Saint Paul	MN	1,413
Culver-Stockton College	MO	730
Cumberland University	TN	965
Dakota Wesleyan University	SD	659
Dallas Baptist University	TX	2,293
East Texas Baptist University	TX	1,057
<b>Elon University</b>	NC	4,892
Embry-Riddle Aeronautical University-Daytona Beach	FL	4,248
Eureka College	IL	702
Evangel University	MO	1,594
Felician College	NJ	1,435
Franciscan University of Steubenville	OH	1,951
Franklin Pierce University	NH	1,527
Fresno Pacific University	CA	2,038
Friends University	KS	1,530
Graceland University-Lamoni	IA	1,169
Greensboro College	NC	859
Hardin-Simmons University	TX	1,716
Harding University	AR	3,879
Heritage University	WA	694
Holy Names University	CA	483
Howard Payne University	TX	1,002
Huntingdon College	AL	883
Husson University	ME	1,957
Indiana Wesleyan University	IN	9,757
<b>Iowa Wesleyan College</b>	IA	583
John Brown University	AR	1,459
Judson College	AL	261
Kansas Wesleyan University	KS	677
Kentucky Wesleyan College	KY	759
La Roche College	PA	1,046
LaGrange College	GA	758
Lakeland College	WI	1,048

LeTourneau University	TX	2,712
Lee University	TN	3,543
Limestone College	SC	2,366
Lincoln Memorial University	TN	1,450
Lipscomb University	TN	2,423
Long Island University-Brooklyn Campus	NY	3,885
Louisiana College	LA	988
Lyon College	AR	624
Madonna University	MI	1,782
Malone University	OH	1,790
Marian University	WI	1,545
Mars Hill College	NC	1,082
Marygrove College	MI	672
Marylhurst University	OR	236
McKendree University	IL	1,791
McMurry University	TX	1,176
<b>McPherson College</b>	KS	621
Medaille College	NY	1,694
Menlo College	CA	581
Methodist University	NC	1,920
MidAmerica Nazarene University	KS	1,074
Milligan College	TN	832
Missouri Valley College	MO	1,448
Mount Marty College	SD	621
Mount Mary College	WI	971
<b>Mount St Mary's University</b>	MD	1,510
Neumann University	PA	2,020
New England College	NH	923
New York Institute of Technology	NY	4,167
Newman University	KS	1,077
Nichols College	MA	1,107
<b>North Carolina Wesleyan College</b>	NC	1,193
Northland College	WI	531
Northwest Nazarene University	ID	1,162
Notre Dame College	OH	1,236
Oglethorpe University	GA	978
<b>Ohio Dominican University</b>	OH	1,647
Oklahoma Christian University	OK	1,664
Olivet College	MI	1,017
Olivet Nazarene University	IL	2,648
Ouachita Baptist University	AR	1,473

Pacific Union College	CA	1,295
Park University	MO	1,218
<b>Pepperdine University</b>	CA	3,014
Pfeiffer University	NC	942
Piedmont College	GA	1,079
Quincy University	IL	1,159
Rivier College	NH	957
Roger Williams University	RI	3,658
Saint Joseph's College of Maine	ME	1,019
Saint Leo University	FL	8,425
Saint Martin's University	WA	1,131
Saint Mary-of-the-Woods College	IN	473
Saint Thomas Aquinas College	NY	1,284
Samford University	AL	2,752
Shenandoah University	VA	1,795
Shorter University	GA	1,432
Siena Heights University	MI	1,065
Silver Lake College of the Holy Family	WI	173
Simpson University	CA	951
Southern Adventist University	TN	2,322
Southern Nazarene University	OK	1,549
Southwest Baptist University	MO	1,980
Southwestern Adventist University	TX	688
Spalding University	KY	961
Spring Arbor University	MI	2,101
St. Mary's University	TX	2,275
Tabor College	KS	548
Tennessee Wesleyan College	TN	975
Texas Wesleyan University	TX	1,265
The University of Findlay	OH	2,706
Thomas College	ME	680
Trevecca Nazarene University	TN	1,162
Tusculum College	TN	1,954
Union College	NE	674
Union University	TN	2,192
Unity College	ME	578
University of Charleston	WV	1,090
University of La Verne	CA	2,668
University of Mary	ND	1,759
University of Mary Hardin-Baylor	TX	2,380
University of Mobile	AL	1,331

University of New England	ME	2,115
University of New Haven	CT	3,642
University of Pikeville	KY	928
University of Rio Grande	OH	1,298
University of Saint Francis-Fort Wayne	IN	1,527
University of Sioux Falls	SD	980
University of St Francis	IL	1,337
University of St Thomas	TX	1,191
University of the Cumberland	KY	1,399
University of the Incarnate Word	TX	3,706
University of the Ozarks	AR	610
Upper Iowa University	IA	2,600
Urbana University	OH	777
Ursuline College	OH	655
Vanguard University of Southern California	CA	1,344
<b>Villa Maria College</b>	NY	399
Virginia Intermont College	VA	512
Virginia Wesleyan College	VA	1,105
<b>Walsh University</b>	OH	1,842
Warner Pacific College	OR	1,332
<b>Warren Wilson College</b>	NC	916
Wayland Baptist University	TX	1,011
Westminster College	UT	2,174
William Carey University	MS	1,970
William Penn University	IA	1,584
William Woods University	MO	913
York College Pennsylvania	PA	4,669

**Private, 25-50 %**

Abilene Christian University	TX	3,599
Alverno College	WI	1,649
American International College	MA	1,564
Andrews University	MI	1,685
Anna Maria College	MA	881
Aquinas College	MI	1,653
Ashland University	OH	2,607
Aurora University	IL	2,309
Barry University	FL	4,065
Belhaven University	MS	2,282
Bellarmino University	KY	2,203
<b>Benedictine College</b>	KS	1,481



Bethany College	KS	579
Bethel College-North Newton	KS	457
Bethel University	MN	2,649
Biola University	CA	3,832
Briar Cliff University	IA	870
Bridgewater College	VA	1,662
<b>Buena Vista University</b>	IA	2,203
California Lutheran University	CA	2,324
Capital University	OH	2,394
Carroll College	MT	1,291
Catawba College	NC	1,204
Centenary College of Louisiana	LA	776
<b>Chapman University</b>	CA	4,670
Chestnut Hill College	PA	1,217
Clarke University	IA	834
Coker College	SC	978
Colby-Sawyer College	NH	1,131
College of Mount St. Joseph	OH	1,391
College of Saint Benedict	MN	2,038
College of Saint Elizabeth	NJ	598
College of Saint Mary	NE	658
Converse College	SC	645
Covenant College	GA	1,160
Curry College	MA	1,973
D'Youville College	NY	1,608
Daemen College	NY	1,542
Davis & Elkins College	WV	681
DeSales University	PA	1,765
Defiance College	OH	765
Delaware Valley College	PA	1,700
Doane College-Crete	NE	1,038
<b>Dominican College of Blauvelt</b>	NY	1,373
Dordt College	IA	1,315
Dowling College	NY	2,110
<b>Eastern Mennonite University</b>	VA	1,016
Eastern Nazarene College	MA	827
Emerson College	MA	3,388
<b>Emory and Henry College</b>	VA	878
<b>Erskine College and Seminary</b>	SC	541
Florida Southern College	FL	1,943
Fontbonne University	MO	1,223

Franklin College	IN	1,060
<b>Geneva College</b>	PA	1,635
George Fox University	OR	1,858
Georgetown College	KY	1,235
<b>Gonzaga University</b>	WA	4,661
Goshen College	IN	835
Greenville College	IL	1,292
Gwynedd Mercy College	PA	1,465
Heidelberg University	OH	1,135
Holy Family University	PA	1,595
Houston Baptist University	TX	1,960
<b>Huntington University</b>	IN	1,062
Jacksonville University	FL	2,302
Keuka College	NY	1,317
King College	TN	1,490
King's College	PA	1,994
<b>Lenoir-Rhyne University</b>	NC	1,464
Lesley University	MA	1,439
Long Island University-C W Post Campus	NY	3,735
<b>Loyola University-New Orleans</b>	LA	2,620
Lynchburg College	VA	2,097
Manchester College	IN	1,241
Marian University	IN	1,577
<b>Marietta College</b>	OH	1,393
Maryville College	TN	1,053
Maryville University of Saint Louis	MO	1,718
Mercy College	NY	4,849
Mercyhurst College	PA	3,434
Meredith College	NC	1,689
Messiah College	PA	2,729
Midland University	NE	978
Millikin University	IL	2,097
Milwaukee School of Engineering	WI	2,180
Misericordia University	PA	1,699
Mississippi College	MS	2,743
Molloy College	NY	2,497
<b>Monmouth College</b>	IL	1,347
Mount Mercy University	IA	900
Mount Saint Mary College	NY	1,894
Nebraska Wesleyan University	NE	1,637
Newberry College	SC	1,116

Notre Dame de Namur University	CA	638
Oklahoma Baptist University	OK	1,425
Oral Roberts University	OK	2,402
Ottawa University-Ottawa	KS	544
Pace University-New York	NY	6,792
<b>Pacific University</b>	OR	1,562
Point Loma Nazarene University	CA	2,337
Point Park University	PA	2,649
Presbyterian College	SC	1,133
Quinnipiac University	CT	5,859
Regis University	CO	2,476
Roberts Wesleyan College	NY	1,222
Rockhurst University	MO	1,374
Rocky Mountain College	MT	881
Roosevelt University	IL	2,788
<b>Sacred Heart University</b>	CT	3,511
Saint Ambrose University	IA	2,405
Saint Anselm College	NH	1,856
Saint Edward's University	TX	3,526
Saint Francis University	PA	1,585
Saint Joseph's College-New York	NY	4,030
Saint Josephs College	IN	967
Saint Mary's University of Minnesota	MN	1,413
Saint Thomas University	FL	1,066
Saint Vincent College	PA	1,594
Saint Xavier University	IL	2,480
Salve Regina University	RI	1,931
Seattle University	WA	4,337
<b>Seton Hill University</b>	PA	1,511
<b>Simpson College</b>	IA	1,487
Southwestern College	KS	613
Spring Hill College	AL	1,265
Springfield College	MA	3,264
St. Francis College	NY	2,306
<b>Stephens College</b>	MO	694
Sterling College	KS	636
Suffolk University	MA	5,225
Texas Lutheran University	TX	1,270
The College of Idaho	ID	994
The College of Saint Rose	NY	2,846
The College of Saint Scholastica	MN	2,549

<b>The University of Tampa</b>	FL	5,333
Thomas More College	KY	1,363
Trine University	IN	1,572
Trinity Christian College	IL	1,039
Trinity International University-Illinois	IL	897
University of Dubuque	IA	1,548
University of Evansville	IN	2,497
University of Great Falls	MT	616
University of Indianapolis	IN	3,017
University of Portland	OR	3,209
University of Saint Mary	KS	530
University of San Diego	CA	5,113
University of St Thomas	MN	5,914
Viterbo University	WI	1,666
Walla Walla University	WA	1,447
Washington Adventist University	MD	887
<b>Waynesburg University</b>	PA	1,624
<b>Wesleyan College</b>	GA	385
West Virginia Wesleyan College	WV	1,332
<b>Western New England University</b>	MA	2,506
Wheeling Jesuit University	WV	892
Whitworth University	WA	2,302
William Jewell College	MO	1,018
Wilmington College	OH	1,124

**Private, 50-60 %**

Baldwin-Wallace College	OH	3,149
<b>Baylor University</b>	TX	12,188
Benedictine University	IL	2,740
<b>Bradley University</b>	IL	4,807
Brigham Young University-Provo	UT	27,852
Concordia University-Chicago	IL	1,282
Concordia University-Seward	NE	1,108
Creighton University	NE	3,927
<b>Dominican University</b>	IL	1,691
Elmhurst College	IL	2,872
Gannon University	PA	2,466
Georgian Court University	NJ	1,472
Hastings College	NE	1,104
High Point University	NC	3,570
Iona College	NY	3,152

Lewis University	IL	3,450
Linfield College-McMinnville Campus	OR	1,661
Loras College	IA	1,477
MacMurray College	IL	432
<b>Marywood University</b>	PA	2,101
Monmouth University	NJ	4,273
<b>Morningside College</b>	IA	1,207
Mount St. Mary's College	CA	1,801
<b>Northeastern University</b>	MA	15,905
Notre Dame of Maryland University	MD	500
<b>Ohio Northern University</b>	OH	2,274
Oklahoma City University	OK	1,972
Otterbein University	OH	2,312
<b>Our Lady of the Lake University-San Antonio</b>	TX	1,253
Pacific Lutheran University	WA	3,066
Philadelphia University	PA	2,798
Providence College	RI	3,877
Roanoke College	VA	1,990
Saint Joseph College	CT	853
Saint Louis University-Main Campus	MO	6,974
<b>Saint Marys College of California</b>	CA	2,559
Seattle Pacific University	WA	3,019
Seton Hall University	NJ	4,808
Taylor University	IN	1,832
The King's College	NY	378
Thiel College	PA	1,000
Transylvania University	KY	1,099
University of Dayton	OH	7,129
University of Detroit Mercy	MI	2,315
University of Miami	FL	9,402
University of Mount Union	OH	2,141
University of Puget Sound	WA	2,547
University of Tulsa	OK	2,943
Wartburg College	IA	1,711
Wheelock College	MA	804
Whittier College	CA	1,494
<b>Wofford College</b>	SC	1,514

**Private, 60-70 %**

Alliant International University	CA	111
Alma College	MI	1,379

Arcadia University	PA	1,974
<b>Augsburg College</b>	MN	2,567
<b>Augustana College</b>	SD	1,661
Birmingham Southern College	AL	1,504
Bryn Athyn College of the New Church	PA	195
Butler University	IN	3,806
<b>Calvin College</b>	MI	3,779
Carlow University	PA	1,066
Carthage College	WI	2,514
Central College	IA	1,512
DePaul University	IL	13,213
Dominican University of California	CA	1,301
Drake University	IA	3,308
Drury University	MO	3,344
Duquesne University	PA	5,542
Eastern University	PA	2,177
Elizabethtown College	PA	1,851
Elmira College	NY	1,132
Hendrix College	AR	1,443
Hope College	MI	3,091
Illinois College	IL	846
Immaculata University	PA	1,233
Jamestown College	ND	875
John Carroll University	OH	2,868
<b>Loyola University-Chicago</b>	IL	8,867
Lycoming College	PA	1,277
Marist College	NY	4,512
Mercer University	GA	3,710
<b>Merrimack College</b>	MA	1,890
Muskingum University	OH	1,556
Niagara University	NY	2,931
North Park University	IL	1,754
Northwestern College	IA	1,181
Norwich University	VT	2,177
Principia College	IL	526
Queens University of Charlotte	NC	1,441
Randolph-Macon College	VA	1,186
<b>Rider University</b>	NJ	3,980
Rochester Institute of Technology	NY	12,077
Saint Bonaventure University	NY	1,919
<b>Saint John Fisher College</b>	NY	2,687

Saint Michael's College	VT	1,832
<b>Saint Norbert College</b>	WI	2,095
Saint Peter's College	NJ	2,113
Southwestern University	TX	1,348
<b>St Catherine University</b>	MN	2,559
St John's University-New York	NY	11,687
St. Andrews University	NC	407
<b>Susquehanna University</b>	PA	2,205
<b>Texas Christian University</b>	TX	7,518
University of Bridgeport	CT	1,718
University of Denver	CO	4,931
University of Hartford	CT	4,674
University of San Francisco	CA	5,535
University of Scranton	PA	3,860
Utica College	NY	2,065
Wagner College	NY	1,741
<b>Webster University</b>	MO	2,606
Westminster College	MO	1,124
Widener University-Main Campus	PA	2,660
Xavier University	OH	3,827

**Private, 70-80 %**

<b>Adelphi University</b>	NY	4,332
Albertus Magnus College	CT	1,319
Albion College	MI	1,570
<b>American University</b>	DC	6,472
Assumption College	MA	2,025
<b>Austin College</b>	TX	1,287
Bethany College	WV	868
Blackburn College	IL	568
Carroll University	WI	2,621
<b>Catholic University of America</b>	DC	3,338
Cedar Crest College	PA	816
Coe College	IA	1,273
<b>College of Mount Saint Vincent</b>	NY	1,347
Concordia College at Moorhead	MN	2,686
Cornell College	IA	1,176
<b>Guilford College</b>	NC	2,255
<b>Gustavus Adolphus College</b>	MN	2,412
<b>Hamline University</b>	MN	1,845
Hampden-Sydney College	VA	1,058

Hanover College	IN	1,004
<b>Hiram College</b>	OH	1,191
Hofstra University	NY	6,800
Hood College	MD	1,325
Houghton College	NY	1,193
Illinois Wesleyan University	IL	2,084
Juniata College	PA	1,472
La Salle University	PA	3,256
Lake Erie College	OH	892
Lindenwood University	MO	6,875
Loyola Marymount University	CA	5,667
Loyola University Maryland	MD	3,745
Luther College	IA	2,396
Marquette University	WI	7,695
<b>Mary Baldwin College</b>	VA	981
Marymount Manhattan College	NY	1,762
<b>Mills College</b>	CA	910
Millsaps College	MS	938
Moravian College and Moravian	PA	1,530
Nazareth College	NY	2,038
North Central College	IL	2,403
Pratt Institute-Main	NY	2,774
Ripon College	WI	1,041
Rollins College	FL	2,260
Rosemont College	PA	408
Saint Johns University	MN	1,895
Siena College	NY	3,201
<b>Southern Methodist University</b>	TX	5,924
<b>Trinity University</b>	TX	2,253
University of Dallas	TX	1,321
University of Richmond	VA	3,017
University of Southern California	CA	16,563
<b>University of the Pacific</b>	CA	3,654
<b>Valparaiso University</b>	IN	2,670
<b>Villanova University</b>	PA	6,583
Washington College	MD	1,378
<b>Westminster College</b>	PA	1,487
Westmont College	CA	1,353
Wilkes University	PA	1,961
<b>Willamette University</b>	OR	1,786
<b>Wittenberg University</b>	OH	1,759



**Private, 80-85 %**

Albright College	PA	2,303
<b>Alfred University</b>	NY	1,849
Canisius College	NY	2,989
DePauw University	IN	2,359
Fairfield University	CT	3,363
Florida Institute of Technology	FL	4,008
<b>Furman University</b>	SC	2,617
Goddard College	VT	277
Hartwick College	NY	1,487
Ithaca College	NY	6,321
<b>Lebanon Valley College</b>	PA	1,600
<b>Lewis &amp; Clark College</b>	OR	1,904
<b>Manhattan College</b>	NY	2,913
Ohio Wesleyan University	OH	1,883
<b>Randolph College</b>	VA	495
<b>Rockford College</b>	IL	765
<b>Saint Joseph's University</b>	PA	4,593
Saint Mary's College	IN	1,530
Salem College	NC	667
<b>Santa Clara University</b>	CA	4,992
<b>Sewanee-The University of the South</b>	TN	1,430
Skidmore College	NY	2,676
Stetson University	FL	2,071
Stonehill College	MA	2,558
<b>Sweet Briar College</b>	VA	599
The College of New Rochelle	NY	3,283
<b>University of Redlands</b>	CA	2,996
<b>Wabash College</b>	IN	866
Wheaton College	MA	1,630
Wilson College	PA	342

**Private, 85-90 %**

<b>Augustana College</b>	IL	2,502
Boston University	MA	16,186
<b>Centre College</b>	KY	1,236
Chatham University	PA	665
<b>Claremont McKenna College</b>	CA	1,251
Drexel University	PA	11,335

Emmanuel College	MA	1,765
Fordham University	NY	7,590
George Washington University	DC	9,527
<b>Gettysburg College</b>	PA	2,468
Gordon College	MA	1,457
Grove City College	PA	2,470
<b>Kettering University</b>	MI	1,776
<b>Lake Forest College</b>	IL	1,395
<b>Le Moyne College</b>	NY	2,358
Manhattanville College	NY	1,626
Pitzer College	CA	1,033
Rhodes College	TN	1,691
Simmons College	MA	1,695
Syracuse University	NY	13,224
The College of Wooster	OH	1,945
<b>Tulane University of Louisiana</b>	LA	5,993
Washington & Jefferson College	PA	1,413
Wheaton College	IL	2,361

**Private, 90-95 %**

Agnes Scott College	GA	840
<b>Allegheny College</b>	PA	2,109
<b>Bard College</b>	NY	1,876
<b>Beloit College</b>	WI	1,301
Carnegie Mellon University	PA	5,638
Case Western Reserve University	OH	4,071
Clarkson University	NY	2,793
College of the Holy Cross	MA	2,862
<b>Colorado College</b>	CO	2,040
<b>Connecticut College</b>	CT	1,759
<b>Denison University</b>	OH	2,251
Drew University	NJ	1,697
<b>Earlham College</b>	IN	1,150
<b>Eckerd College</b>	FL	2,080
<b>Emory University</b>	GA	7,075
Franklin and Marshall College	PA	2,279
Georgetown University	DC	7,002
Goucher College	MD	1,437
<b>Grinnell College</b>	IA	1,602
Hampshire College	MA	1,505
<b>Hobart William Smith Colleges</b>	NY	2,136

<b>Hollins University</b>	VA	741
Illinois Institute of Technology	IL	2,436
Kalamazoo College	MI	1,330
Kenyon College	OH	1,618
Knox College	IL	1,373
<b>Lawrence University</b>	WI	1,489
Macalester College	MN	1,987
Marlboro College	VT	274
McDaniel College	MD	1,557
Muhlenberg College	PA	2,327
New York University	NY	20,483
<b>Polytechnic Institute of New York University</b>	NY	1,550
Prescott College	AZ	648
<b>Scripps College</b>	CA	937
Shimer College	IL	97
St Lawrence University	NY	2,294
St Olaf College	MN	3,096
Stevens Institute of Technology	NJ	2,363
<b>Trinity Washington University</b>	DC	1,048
<b>University of Notre Dame</b>	IN	8,411
Ursinus College	PA	1,777
<b>Vanderbilt University</b>	TN	6,813
Wake Forest University	NC	4,587
Washington University in St Louis	MO	6,241
<b>Washington and Lee University</b>	VA	1,757
Wells College	NY	545
<b>Whitman College</b>	WA	1,527
Worcester Polytechnic Institute	MA	3,416
Yeshiva University	NY	2,770
<b>Private, 95-98 %</b>		
Antioch College	OH	2,100
Barnard College	NY	2,335
<b>Bates College</b>	ME	1,725
Boston College	MA	9,417
<b>Bowdoin College</b>	ME	1,750
Bucknell University	PA	3,487
Clark University	MA	2,210
<b>Colby College</b>	ME	1,825
Colgate University	NY	2,868

Cooper Union for the Advancement of Science and Art	NY	891
<b>Davidson College</b>	NC	1,738
Dickinson College	PA	2,357
Duke University	NC	6,538
<b>Lafayette College</b>	PA	2,360
Lehigh University	PA	4,712
<b>Northwestern University</b>	IL	8,498
<b>Occidental College</b>	CA	2,063
<b>Rensselaer Polytechnic Institute</b>	NY	5,346
Smith College	MA	2,571
St John's College	NM	407
Trinity College	CT	2,135
Tufts University	MA	5,150
Union College	NY	2,150
<b>University of Pennsylvania</b>	PA	10,181
<b>University of Rochester</b>	NY	5,319
<b>Vassar College</b>	NY	2,392
<b>Private, 98-99 %</b>		
Bennington College	VT	664
Brown University	RI	6,086
Bryn Mawr College	PA	1,281
<b>Carleton College</b>	MN	1,991
Cornell University	NY	13,871
<b>Hamilton College</b>	NY	1,841
<b>Johns Hopkins University</b>	MD	5,710
<b>Middlebury College</b>	VT	2,489
<b>Mount Holyoke College</b>	MA	2,257
Oberlin College	OH	2,902
Pomona College	CA	1,543
<b>Princeton University</b>	NJ	5,142
<b>Reed College</b>	OR	1,408
University of Chicago	IL	5,214
Wellesley College	MA	2,415
<b>Wesleyan University</b>	CT	2,837
<b>Williams College</b>	MA	1,998
<b>Private, 99-100 %</b>		
<b>Amherst College</b>	MA	1,794

<b>Brandeis University</b>	MA	3,297
<b>California Institute of Technology</b>	CA	967
Columbia University in the City of New York	NY	6,937
<b>Dartmouth College</b>	NH	4,135
Harvard University	MA	6,909
<b>Harvey Mudd College</b>	CA	769
<b>Haverford College</b>	PA	1,173
Massachusetts Institute of Technology	MA	4,241
<b>Rice University</b>	TX	3,447
<b>Sarah Lawrence College</b>	NY	1,228
St John's College	MD	462
Stanford University	CA	6,887
<b>Swarthmore College</b>	PA	1,509
Yale University	CT	5,279

**Public, 0-50 %**

Adams State College	CO	2,027
Angelo State University	TX	5,132
Appalachian State University	NC	14,219
Arizona State University	AZ	46,894
Arkansas State University-Main Campus	AR	7,681
Arkansas Tech University	AR	6,799
Armstrong Atlantic State University	GA	4,916
Athens State University	AL	1,590
Augusta State University	GA	4,301
Austin Peay State University	TN	7,304
Ball State University	IN	16,861
Bemidji State University	MN	3,725
Black Hills State University	SD	2,663
Bloomsburg University of Pennsylvania	PA	8,563
Boise State University	ID	12,674
Bowling Green State University-Main Campus	OH	13,604
California State University-Chico	CA	13,601
California State University-Dominguez Hills	CA	7,126
California State University-East Bay	CA	8,695
California State University-Fresno	CA	15,538
California State University-Long Beach	CA	22,505
California State University-Los Angeles	CA	13,203
California State University-San Bernardino	CA	11,893
California University of Pennsylvania	PA	6,642

Cameron University	OK	3,793
Castleton State College	VT	1,868
Central Connecticut State University	CT	7,899
Central Michigan University	MI	18,856
Central Washington University	WA	9,509
Chadron State College	NE	1,664
Chicago State University	IL	3,828
Citadel Military College of South Carolina	SC	2,299
Clemson University	SC	14,477
Cleveland State University	OH	8,005
Colorado State University-Pueblo	CO	4,049
Columbus State University	GA	4,977
Concord University	WV	2,367
Dakota State University	SD	1,187
Delta State University	MS	2,390
Dickinson State University	ND	1,679
East Carolina University	NC	18,571
East Central University	OK	3,218
East Stroudsburg University of Pennsylvania	PA	5,791
East Tennessee State University	TN	10,234
Eastern Connecticut State University	CT	4,413
Eastern Illinois University	IL	8,871
Eastern Kentucky University	KY	11,883
Eastern Michigan University	MI	12,988
Eastern New Mexico University-Main Campus	NM	2,660
Eastern Oregon University	OR	2,220
Eastern Washington University	WA	9,031
Emporia State University	KS	3,521
Fairmont State University	WV	3,739
Ferris State University	MI	9,273
Fitchburg State University	MA	3,517
Florida State University	FL	28,006
Fort Hays State University	KS	4,700
Fort Lewis College	CO	3,461
Frostburg State University	MD	4,500
Georgia College & State University	GA	5,156
Georgia Southern University	GA	15,263
Georgia Southwestern State University	GA	2,129
Georgia State University	GA	17,408
Glenville State College	WV	1,262
Henderson State University	AR	2,990

Idaho State University	ID	7,738
Illinois State University	IL	17,233
Indiana State University	IN	8,224
Indiana University-Kokomo	IN	1,704
Indiana University-Northwest	IN	3,395
Indiana University-Purdue University-Fort Wayne	IN	8,829
Indiana University-Purdue University-Indianapolis	IN	15,847
Indiana University-South Bend	IN	4,459
Indiana University-Southeast	IN	4,110
Jacksonville State University	AL	6,057
James Madison University	VA	16,803
Johnson State College	VT	1,093
Kansas State University	KS	16,941
Kean University	NJ	10,046
Keene State College	NH	4,865
Kent State University at Kent	OH	18,286
Lake Superior State University	MI	2,183
Lamar University	TX	6,985
Lander University	SC	2,779
Lock Haven University	PA	4,711
<b>Longwood University</b>	VA	3,853
Louisiana State University and Agricultural & Mechanical College	LA	21,999
Louisiana Tech University	LA	6,381
Lyndon State College	VT	1,194
Maine Maritime Academy	ME	917
Marshall University	WV	8,468
Massachusetts College of Liberal Arts	MA	1,497
Mayville State University	ND	552
McNeese State University	LA	6,108
Metropolitan State College of Denver	CO	14,366
Middle Tennessee State University	TN	19,682
Midwestern State University	TX	4,287
Minnesota State University Moorhead	MN	5,748
Minnesota State University-Mankato	MN	11,643
Minot State University	ND	2,438
Mississippi State University	MS	14,079
Mississippi University for Women	MS	1,876
Missouri State University-Springfield	MO	13,365

Missouri Western State University	MO	4,329
Montana State University	MT	9,430
Montana State University-Billings	MT	2,568
Montana State University-Northern	MT	946
Montana Tech of the University of Montana	MT	1,777
Morehead State University	KY	5,418
Murray State University	KY	6,730
New Jersey City University	NJ	4,925
New Mexico Highlands University	NM	1,588
New Mexico State University-Main Campus	NM	12,619
Nicholls State University	LA	4,983
North Dakota State University-Main Campus	ND	10,787
North Georgia College & State University	GA	4,499
Northeastern Illinois University	IL	5,570
Northeastern State University	OK	5,883
Northern Arizona University	AZ	16,816
Northern Michigan University	MI	7,810
Northern State University	SD	1,460
Northwest Missouri State University	MO	5,476
Northwestern Oklahoma State University	OK	1,721
Northwestern State University of Louisiana	LA	5,305
<b>Oakland University</b>	MI	11,466
Ohio State University-Lima Campus	OH	1,212
Ohio State University-Main Campus	OH	38,300
Ohio State University-Mansfield Campus	OH	1,136
Ohio State University-Newark Campus	OH	2,115
Oklahoma Panhandle State University	OK	1,117
Oklahoma State University-Main Campus	OK	15,736
Old Dominion University	VA	14,345
Oregon Institute of Technology	OR	2,098
Oregon State University	OR	16,147
Peru State College	NE	1,249
Pittsburg State University	KS	5,535
Plymouth State University	NH	4,130
Portland State University	OR	14,015
Purdue University-Calumet Campus	IN	5,765
Radford University	VA	7,614
<b>Rhode Island College</b>	RI	5,691
Rutgers University-Camden	NJ	3,620
Rutgers University-Newark	NJ	5,859
Saginaw Valley State University	MI	7,512



Saint Cloud State University	MN	12,050
Salisbury University	MD	7,100
Sam Houston State University	TX	12,282
San Diego State University	CA	20,874
Shepherd University	WV	3,362
South Dakota State University	SD	8,841
Southeast Missouri State University	MO	7,685
Southeastern Louisiana University	LA	10,988
Southeastern Oklahoma State University	OK	2,939
Southern Arkansas University Main Campus	AR	2,385
Southern Connecticut State University	CT	7,494
Southern Illinois University Carbondale	IL	13,261
<b>Southern Illinois University Edwardsville</b>	IL	9,603
Southern Polytechnic State University	GA	3,392
Southern Utah University	UT	5,249
Southwest Minnesota State University	MN	2,218
Southwestern Oklahoma State University	OK	3,694
St Mary's College of Maryland	MD	1,894
Stephen F Austin State University	TX	9,605
Sul Ross State University	TX	1,433
Tarleton State University	TX	6,684
Tennessee Technological University	TN	8,493
Texas A & M University-Commerce	TX	4,756
Texas A & M University-Corpus Christi	TX	6,406
Texas A & M University-Kingsville	TX	5,526
Texas State University-San Marcos	TX	22,330
Texas Tech University	TX	22,918
Texas Woman's University	TX	5,810
The College of New Jersey	NJ	6,270
The University of Montana	MT	10,965
The University of Montana-Western	MT	1,154
The University of Tennessee	TN	20,122
The University of Tennessee at Chattanooga	TN	8,224
The University of Tennessee-Martin	TN	6,082
The University of Texas at El Paso	TX	11,921
The University of Texas-Pan American	TX	11,985
The University of Virginia's College at Wise	VA	1,550
Towson University	MD	15,466
Troy University	AL	11,034
Truman State University	MO	5,403
University of Alabama at Birmingham	AL	8,144

University of Alabama at Huntsville	AL	4,501
University of Alaska Fairbanks	AK	3,670
University of Arizona	AZ	26,853
University of Arkansas	AR	14,785
University of Arkansas at Little Rock	AR	5,793
University of Arkansas at Monticello	AR	2,508
University of Central Arkansas	AR	8,051
University of Central Missouri	MO	7,389
University of Central Oklahoma	OK	10,433
University of Idaho	ID	8,479
University of Kentucky	KY	18,216
University of Louisiana at Lafayette	LA	12,875
University of Louisiana-Monroe	LA	5,005
University of Maine at Farmington	ME	2,095
University of Maine at Fort Kent	ME	559
University of Maine at Machias	ME	459
<b>University of Maine at Presque Isle</b>	ME	918
University of Maryland-Baltimore County	MD	8,810
University of Massachusetts-Boston	MA	7,800
University of Massachusetts-Dartmouth	MA	6,810
University of Massachusetts-Lowell	MA	8,111
University of Memphis	TN	12,833
University of Minnesota-Duluth	MN	9,289
University of Mississippi	MS	12,971
University of Missouri-St Louis	MO	5,908
University of Montevallo	AL	2,228
University of Nebraska at Kearney	NE	4,485
University of Nebraska at Omaha	NE	9,267
University of Nebraska-Lincoln	NE	18,129
University of Nevada-Las Vegas	NV	16,443
University of Nevada-Reno	NV	11,435
University of New Mexico-Main Campus	NM	16,693
University of New Orleans	LA	6,276
University of North Alabama	AL	5,048
University of North Carolina at Asheville	NC	3,107
University of North Carolina at Charlotte	NC	16,853
University of North Carolina at Pembroke	NC	4,813
University of North Carolina at Wilmington	NC	10,521
<b>University of North Dakota</b>	ND	9,159
University of North Texas	TX	22,095
University of Northern Colorado	CO	9,147

University of Oklahoma Norman Campus	OK	16,995
University of Science and Arts of Oklahoma	OK	889
University of South Alabama	AL	8,665
<b>University of South Carolina-Columbia</b>	SC	19,725
University of Southern Mississippi	MS	11,016
University of Toledo	OH	14,822
University of Utah	UT	16,139
University of West Alabama	AL	1,577
University of West Georgia	GA	8,031
University of Wisconsin-Green Bay	WI	4,795
University of Wisconsin-Oshkosh	WI	9,386
University of Wisconsin-Platteville	WI	6,498
University of Wisconsin-River Falls	WI	5,801
University of Wisconsin-Stevens Point	WI	8,481
University of Wisconsin-Stout	WI	6,972
University of Wisconsin-Superior	WI	2,114
University of Wisconsin-Whitewater	WI	9,323
University of Wyoming	WY	8,352
Utah State University	UT	12,333
Valdosta State University	GA	9,485
Valley City State University	ND	778
Virginia Commonwealth University	VA	19,219
Washburn University	KS	4,008
Wayne State College	NE	2,721
Wayne State University	MI	13,378
Weber State University	UT	11,044
West Liberty University	WV	2,362
West Texas A & M University	TX	5,144
West Virginia University	WV	20,809
West Virginia University Institute of Technology	WV	955
Western Carolina University	NC	6,269
Western Connecticut State University	CT	4,892
Western Illinois University	IL	9,496
Western Kentucky University	KY	13,890
Western Michigan University	MI	17,287
Western New Mexico University	NM	1,622
Western Oregon University	OR	4,531
Western State College of Colorado	CO	1,936
Wichita State University	KS	8,017
William Paterson University of New Jersey	NJ	8,296
Winona State University	MN	7,341

Winthrop University	SC	4,336
Worcester State University	MA	3,612
Wright State University-Main Campus	OH	11,903
Youngstown State University	OH	10,710

**Public, 50-80 %**

Auburn University	AL	18,727
Bridgewater State University	MA	7,751
CUNY Hunter College	NY	10,936
CUNY York College	NY	4,878
California Polytechnic State University-San Luis Obispo	CA	16,693
California State Polytechnic University-Pomona	CA	15,906
California State University-Bakersfield	CA	5,717
California State University-Fullerton	CA	22,699
California State University-Northridge	CA	23,053
California State University-Sacramento	CA	18,913
California State University-Stanislaus	CA	5,552
Clarion University of Pennsylvania	PA	5,263
<b>College of Charleston</b>	SC	9,299
Colorado State University-Fort Collins	CO	19,617
Edinboro University of Pennsylvania	PA	6,018
Framingham State University	MA	3,121
George Mason University	VA	15,644
Humboldt State University	CA	6,597
Indiana University of Pennsylvania-Main Campus	PA	11,845
Indiana University-Bloomington	IN	30,888
Kutztown University of Pennsylvania	PA	8,833
Mansfield University of Pennsylvania	PA	2,735
<b>Miami University-Oxford</b>	OH	14,525
Michigan State University	MI	32,720
Michigan Technological University	MI	5,318
Millersville University of Pennsylvania	PA	6,890
Montclair State University	NJ	12,046
New Mexico Institute of Mining and Technology	NM	1,184
North Carolina State University at Raleigh	NC	21,974
Northern Illinois University	IL	15,850
Ohio University-Main Campus	OH	17,100
Purdue University-Main Campus	IN	30,118
Rowan University	NJ	8,457

<b>SUNY College at Brockport</b>	NY	6,643
SUNY College at Buffalo	NY	8,840
SUNY College at Cortland	NY	6,088
SUNY College at Oswego	NY	6,979
SUNY College at Plattsburgh	NY	5,502
SUNY Maritime College	NY	1,545
SUNY at Fredonia	NY	5,227
<b>SUNY at Geneseo</b>	NY	5,080
Salem State University	MA	5,936
San Francisco State University	CA	20,753
San Jose State University	CA	18,100
Shippensburg University of Pennsylvania	PA	6,796
Slippery Rock University of Pennsylvania	PA	7,432
Southern Oregon University	OR	3,606
Temple University	PA	24,501
Texas A & M University-College Station	TX	35,812
The University of Alabama	AL	22,587
The University of Texas at Arlington	TX	15,177
The University of Texas at Austin	TX	35,267
University of Akron Main Campus	OH	17,358
University of Cincinnati-Main Campus	OH	18,628
University of Connecticut	CT	16,496
University of Delaware	DE	15,888
University of Georgia	GA	24,299
University of Hawaii at Manoa	HI	11,155
University of Houston	TX	22,006
University of Illinois at Chicago	IL	15,502
University of Kansas	KS	17,958
<b>University of Louisville</b>	KY	12,038
University of Maine	ME	7,707
University of Mary Washington	VA	3,812
University of Maryland-College Park	MD	24,749
<b>University of Michigan-Flint</b>	MI	4,478
University of Minnesota-Twin Cities	MN	28,211
University of Missouri-Columbia	MO	23,369
University of Missouri-Kansas City	MO	6,663
University of New Hampshire-Main Campus	NH	11,895
University of North Carolina at Greensboro	NC	13,054
University of Northern Iowa	IA	10,311
University of Oregon	OR	17,798
University of Pittsburgh-Pittsburgh Campus	PA	17,035

University of Rhode Island	RI	11,469
University of South Florida-Main Campus	FL	23,189
University of Southern Maine	ME	4,781
<b>University of Vermont</b>	VT	10,125
University of Wisconsin-Milwaukee	WI	20,642
University of Wisconsin-Parkside	WI	3,636
Virginia Military Institute	VA	1,569
Virginia Polytechnic Institute and State University	VA	23,184
Washington State University	WA	18,676
West Chester University of Pennsylvania	PA	11,076
Western Washington University	WA	12,739
Westfield State University	MA	4,636

**Public, 80-90 %**

CUNY Brooklyn College	NY	9,001
CUNY City College	NY	9,255
CUNY Queens College	NY	11,853
<b>Iowa State University</b>	IA	21,674
Missouri University of Science and Technology	MO	4,990
New Jersey Institute of Technology	NJ	4,942
Pennsylvania State University- Main Campus	PA NJ	36,954 28,829
Rutgers University-New Brunswick	NY	5,693
SUNY College at Oneonta	NY	3,763
<b>SUNY College at Potsdam</b>	NY	1,569
SUNY College of Environmental Science and Forestry	CA	24,929
University of California-Berkeley	CA	23,844
University of California-Davis	CA	21,513
University of California-Irvine	CA	25,434
University of California-Los Angeles	CA	17,805
University of California-Riverside	CA	18,806
<b>University of California-Santa Barbara</b>	CO	24,014
University of Colorado Boulder	FL	30,249
University of Florida	IA	18,895
University of Iowa	MA	19,694
<b>University of Massachusetts Amherst</b>	MN	1,636
University of Minnesota-Morris	NC	17,457
<b>University of North Carolina at Chapel Hill</b>	WI	27,374
University of Wisconsin-Madison		

**Public, 90-100 %**

College of William and Mary	VA	5,835
Colorado School of Mines	CO	3,542
<b>Georgia Institute of Technology-Main Campus</b>	GA	12,506
New College of Florida	FL	801
SUNY College at Old Westbury	NY	3,462
SUNY at Albany	NY	12,038
SUNY at Binghamton	NY	11,365
State University of New York at New Paltz	NY	5,956
<b>Stony Brook University</b>	NY	14,845
<b>United States Air Force Academy</b>	CO	4,619
<b>United States Coast Guard Academy</b>	CT	1,017
United States Merchant Marine Academy	NY	980
<b>United States Military Academy</b>	NY	4,686
United States Naval Academy	MD	4,603
University at Buffalo	NY	17,952
University of California-San Diego	CA	22,906
<b>University of California-Santa Cruz</b>	CA	15,194
University of Illinois at Urbana-Champaign	IL	30,292
University of Michigan-Ann Arbor	MI	26,096
University of Virginia-Main Campus	VA	13,826
University of Washington-Seattle Campus	WA	25,564

**HISTORICALLY BLACK COLLEGES AND UNIVERSITIES****HBCU, Private**

Allen University	SC	819
Benedict College	SC	3,088
Bennett College for Women	NC	710
Bethune-Cookman University	FL	3,163
Claflin University	SC	1,754
Clark Atlanta University	GA	3,081
<b>Dillard University</b>	LA	1,101
<b>Fisk University</b>	TN	491
Florida Memorial University	FL	1,707
Hampton University	VA	4,209
<b>Howard University</b>	DC	6,558
Huston-Tillotson University	TX	832

Jarvis Christian College	TX	521
<b>Johnson C Smith University</b>	NC	1,298
Lane College	TN	2,210
Le Moyne-Owen College	TN	888
Livingstone College	NC	1,146
<b>Morehouse College</b>	GA	2,402
Oakwood University	AL	1,751
Paine College	GA	869
Paul Quinn College	TX	198
<b>Philander Smith College</b>	AR	651
Rust College	MS	795
Saint Augustines College	NC	1,485
Saint Pauls College	VA	556
Shaw University	NC	2,310
<b>Spelman College</b>	GA	2,080
Stillman College	AL	1,017
Talladega College	AL	649
Texas College	TX	862
Tougaloo College	MS	889
Tuskegee University	AL	2,411
Virginia Union University	VA	1,274
Voorhees College	SC	732
Wilberforce University	OH	668
Wiley College	TX	1,260
<b>Xavier University of Louisiana</b>	LA	2,585

### **HBCU, Public**

<b>Alabama A &amp; M University</b>	AL	4,590
Alabama State University	AL	4,506
Albany State University	GA	3,580
Alcorn State University	MS	2,749
Bluefield State College	WV	1,582
Bowie State University	MD	3,592
Central State University	OH	2,039
Cheyney University of Pennsylvania	PA	1,333
Coppin State University	MD	2,579
Delaware State University	DE	3,065
Elizabeth City State University	NC	2,854
Fayetteville State University	NC	3,821
Florida Agricultural and Mechanical University	FL	10,325
Fort Valley State University	GA	3,060



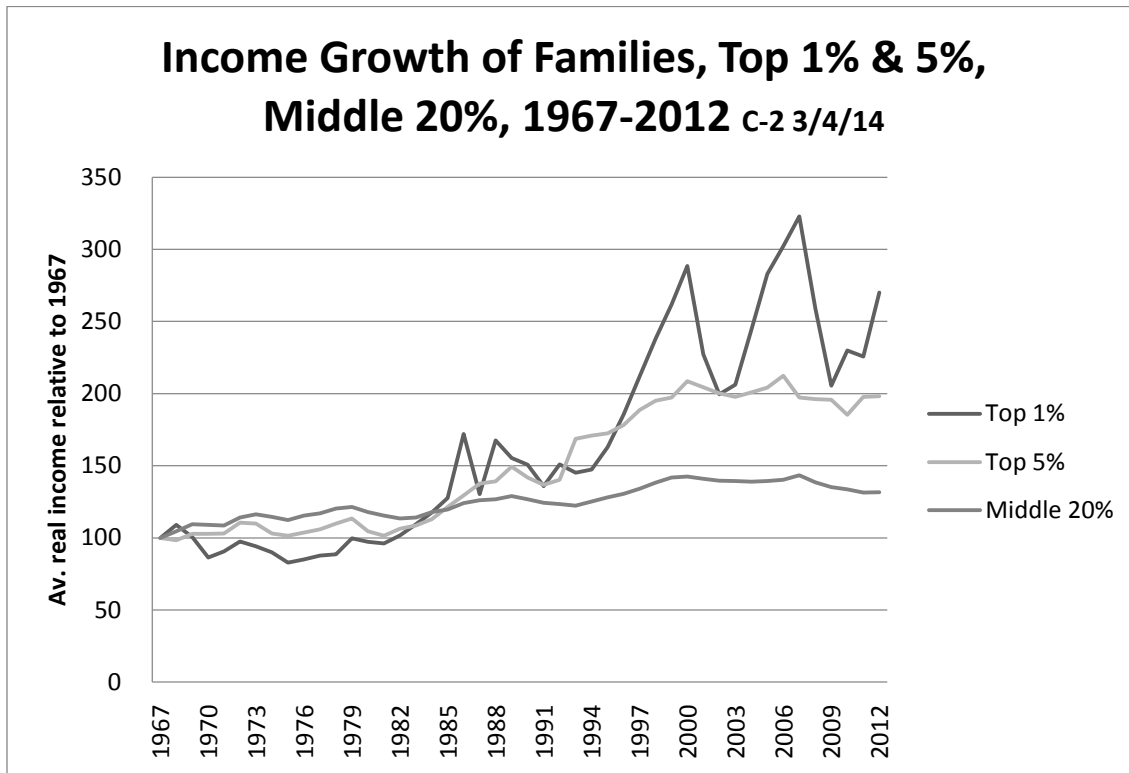
Grambling State University	LA	4,107
Jackson State University	MS	5,670
Kentucky State University	KY	2,120
Langston University	OK	1,895
Lincoln University	MO	2,129
<b>Lincoln University of Pennsylvania</b>	PA	1,763
Mississippi Valley State University	MS	1,973
<b>Morgan State University</b>	MD	5,874
Norfolk State University	VA	4,977
North Carolina A & T State University	NC	8,095
North Carolina Central University	NC	5,220
Prairie View A & M University	TX	6,416
Savannah State University	GA	3,403
South Carolina State University	SC	3,485
Southern University and A & M College	LA	5,091
Tennessee State University	TN	5,538
Texas Southern University	TX	5,828
<b>University of Arkansas at Pine Bluff</b>	AR	2,999
University of Maryland Eastern Shore	MD	3,658
University of the District of Columbia	DC	2,309
Virginia State University	VA	4,732
West Virginia State University	WV	2,026
<b>Winston-Salem State University</b>	NC	5,213

Note: Colleges in bold are in sample of 188 with Freshman Survey data.

Note: percentiles based on 1970-era average SAT or equivalent, as reported in college guides. See text.

Chapter 4

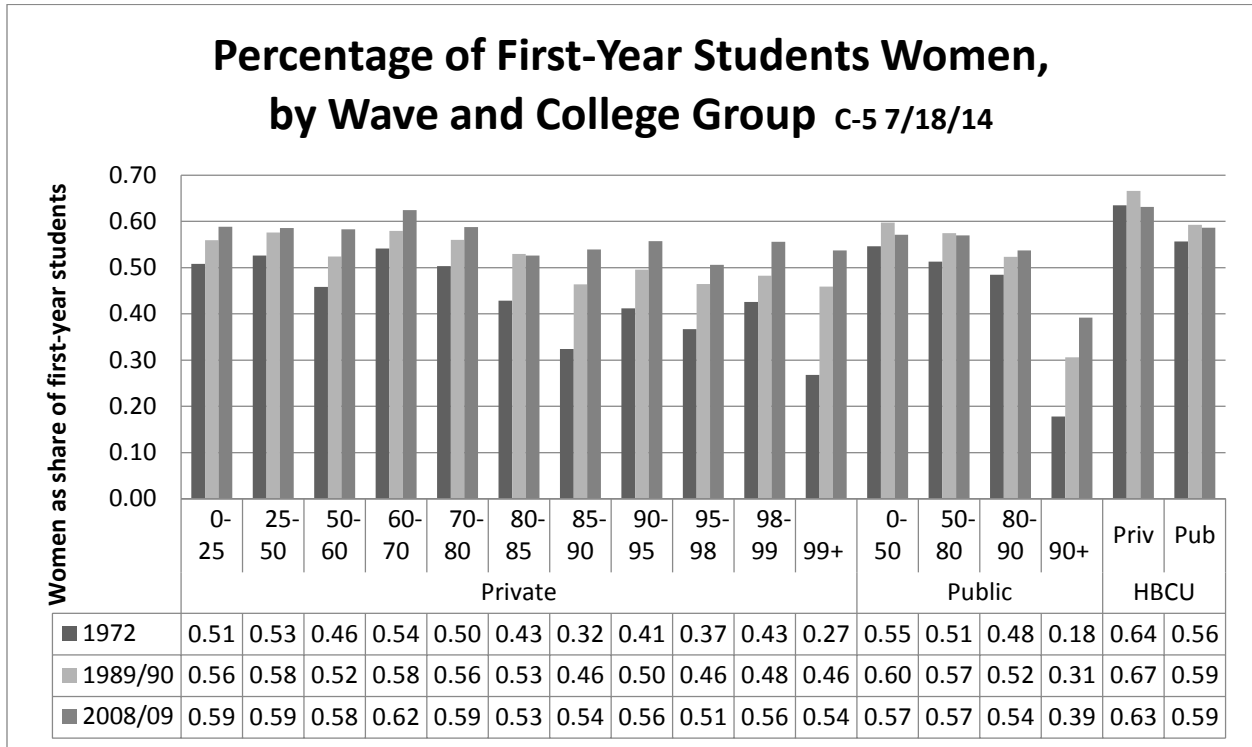
Appendix Figure 4.1. Average Income for Families in the Middle 20%, Top 5% and Top 1%



Source: Middle 20%: Bureau of Labor Statistics, Table F-3. Mean Income Received by Each Fifth and Top 5 Percent of Families, All Races: 1966 to 2012

<http://www.census.gov/hhes/www/income/data/historical/inequality/index.html>, 1/29/14; top 1%: Piketty and Saez, where family is defined as a tax unit, and income is defined as annual gross income reported on individual tax returns and excluding all government transfers. <http://emlab.berkeley.edu/users/saez/piketty-saezOUP04US.pdf>, 11/14/13. [(C-2,6) Income by quintile & Gini coefficient 030414: Mid 20, Top 5&1]

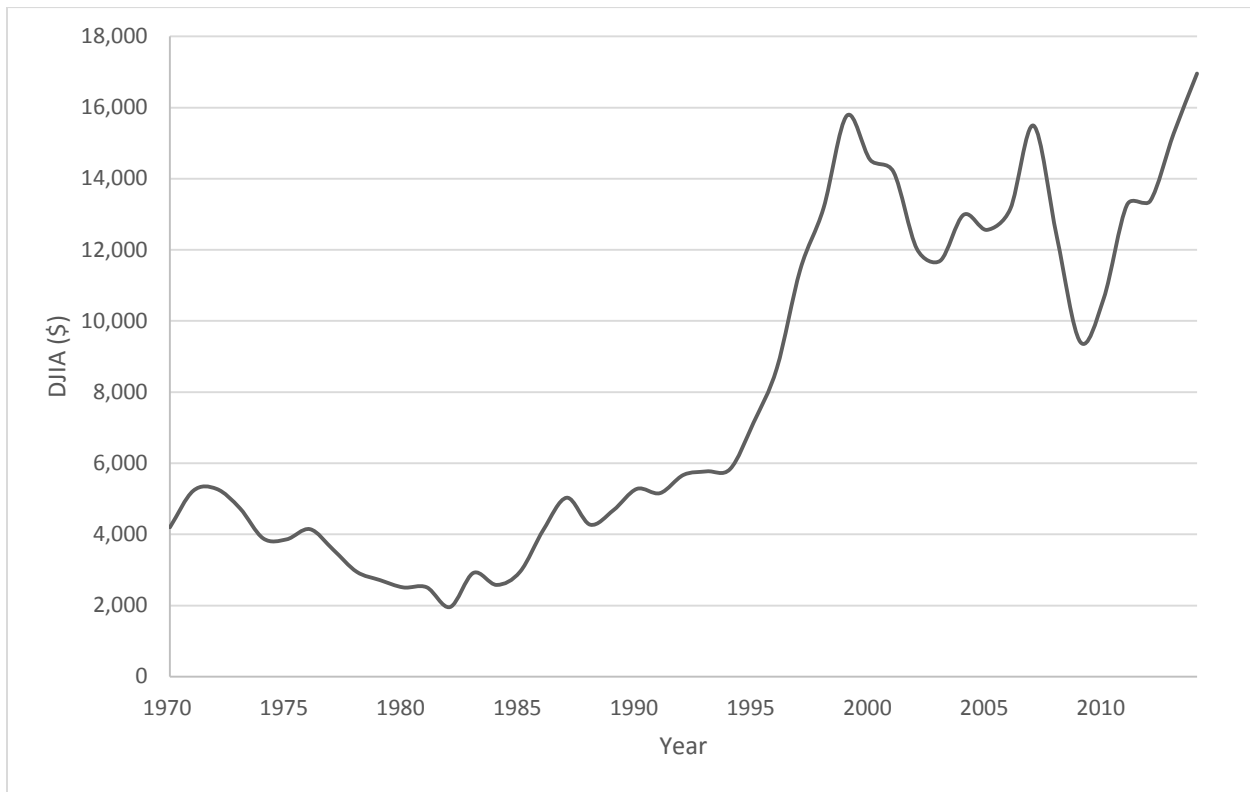
Appendix Figure 4.2. Percentage Women among First-Year Students, by College Group and Wave



Source: Freshman Survey, 1972, 1989, 1990, 2008, and 2009 for selected colleges. The figure shows the proportion of women among first-year students attending colleges in the group. The enrollment-weighted proportion of women for all first-year students in four-year colleges were: 0.498 for 1972, 0.559 for 1989/90 and 0.563 for 2008/09. [(C-5) FS bar graphs for women 071814 MH 042516: Women]

Chapter 5

**Appendix Figure 5.1 Dow Jones Average, July (2014 dollars)**



Source: Samuel H. Williamson, xxx. Value as of the first trading day in July. [Dow Jones Task 38 DJA CPI MH 110715: 110415]

Appendix Table 5.1. Universities in Sample by 2010 Donations, Highest and Lowest Rank in Decadal Years, 1970 – 2010

2010 rank	Institution Name	State	Highest rank	Lowest rank
1	Stanford University	CA	1	6
2	Harvard University	MA	1	2
3	Johns Hopkins University	MD	3	23
4	University of Southern California	CA	4	16
5	Columbia University	NY	5	8
6	University of Pennsylvania	PA	4	8
7	Yale University	CT	3	7
8	New York University	NY	2	18
9	Duke University	NC	3	19
10	Indiana University	IN	10	27
11	Univ of California, Los Angeles	CA	9	33
12	Cornell University	NY	3	12
13	Univ of California, Berkeley	CA	12	40
14	Massachusetts Institute of Technology	MA	8	14
15	University of Washington	WA	14	38
16	Univ of North Carolina at Chapel Hill	NC	16	53
17	University of Michigan	MI	10	17
18	University of Chicago	IL	3	20
19	University of Minnesota	MN	7	19
20	Northwestern University	IL	8	20
21	University of Notre Dame	IN	15	25
22	Ohio State University	OH	20	38
23	Texas A&M University	TX	20	48
24	Washington University	MO	11	30
25	Princeton University	NJ	12	25
26	Pennsylvania State University	PA	21	48
27	University of Virginia	VA	17	49
28	Purdue University	IN	28	48
29	Brown University	RI	29	37
30	University of Miami	FL	21	35
31	California Institute of Technology	CA	29	37
32	Dartmouth College	NH	10	32
33	University of Arizona	AZ	25	44
34	University of Kansas	KS	34	57
35	Vanderbilt University	TN	20	36
36	University of Oregon	OR	36	74
37	Boston College	MA	37	88
38	University of Pittsburgh	PA	31	44
39	University of Iowa	IA	26	46
40	Michigan State University	MI	28	56

41	Univ of California, Davis	CA	41	65
42	Georgia Institute of Technology	GA	34	71
43	Univ of California, San Diego	CA	31	76
	Arizona State University			
44	Foundation	AZ	44	89
45	William Marsh Rice University	TX	26	54
46	University of Cincinnati	OH	24	68
47	Georgetown University	DC	22	47
48	Univ of California, Irvine	CA	48	102
49	Rutgers, The State University	NJ	39	50
50	Loyola University of Chicago	IL	33	89
51	University of Alabama	AL	51	108
52	Virginia Polytechnic Inst & St Univ	VA	34	57
53	Case Western Reserve University	OH	15	53
	North Carolina State Univ. at			
54	Raleigh	NC	47	58
55	Oregon State University	OR	55	71
56	Carnegie-Mellon University	PA	34	56
57	Brandeis University	MA	21	57
58	University of Rochester	NY	30	58
59	University of Louisville	KY	59	90
60	University of Georgia	GA	29	61
61	Syracuse University	NY	34	65
	West Virginia University			
62	Foundation, Inc.	WV	57	69
63	University of Kentucky	KY	60	72
64	SUNY-Stony Brook	NY	64	113
65	Marquette University	WI	54	81
66	Temple University	PA	50	69
67	Tufts University	MA	36	67
68	Wake Forest University	NC	43	68
69	Iowa State University	IA	26	69
70	University of New Mexico	NM	70	83
71	Drexel University	PA	70	106
72	Univ of California, Santa Barbara	CA	72	108
73	University of Tulsa	OK	64	99
74	University of Denver	CO	62	80
75	University of Hawaii Foundation	HI	68	85
76	Rensselaer Polytechnic Institute	NY	51	76
77	University of South Florida	FL	68	93
78	Kent State University	OH	73	103
79	Lehigh University	PA	45	79
80	Texas Christian University	TX	44	87
81	Clemson University	SC	43	91
82	SUNY-Albany	NY	82	113
83	University of Delaware	DE	52	83

84	SUNY-Binghamton	NY	84	120
85	American University	DC	85	107
86	Miami University	OH	83	101
87	University of Vermont	VT	74	94
88	Northeastern University	MA	61	95
89	SUNY-Buffalo	NY	77	101
90	Univ of California, Riverside	CA	84	107
91	East Carolina University	NC	76	117
92	Ohio University	OH	78	93
93	Ball State University	IN	69	96
94	Univ of California, Santa Cruz	CA	83	118
95	University of Memphis	TN	95	110
96	University of Saint Thomas	MN	82	97
97	Colorado School of Mines	CO	79	98
98	Western Michigan University	MI	91	112
99	University of Rhode Island	RI	98	101
100	East Tennessee State University	TN	99	121
101	University of Dayton	OH	72	101
102	Illinois Institute of Technology	IL	40	102
103	University of San Francisco	CA	79	103
	Univ of North Carolina at			
104	Greensboro	NC	102	114
105	Seton Hall University	NJ	95	114
106	University of North Texas	TX	100	120
107	Indiana State University	IN	104	119
108	Bowling Green State University	OH	94	113
109	University of the Pacific	CA	77	109
110	University of Toledo	OH	97	112
	University of Arkansas at Little			
111	Rock	AR	111	120
112	Duquesne University	PA	71	112
113	Clarkson University	NY	85	113
114	Florida Institute of Technology	FL	98	116
115	Oakland University	MI	97	115
116	University of Hartford	CT	69	116
117	Indiana Univ. of Pennsylvania	PA	115	121
118	Georgia Southern University	GA	117	119
119	Pacific University	OR	106	119
	Polytechnic Institute of New York			
120	University	NY	87	120
121	Immaculata University	PA	115	121

Source: Author's calculations; Council for Aid to Education, *Voluntary Support of Education*, data on voluntary support of education, total contributions that universities received from foundations, alumni, other individuals, corporations, and religious and other organizations.

## Chapter 7

### **Classification of College Majors**

The following majors were considered employment related: Accounting, Actuarial Science, Engineering (Aerospace, Architectural, Biological Systems, Biomedical, Chemical, Bimolecular, Computer, Electrical, Management, Fuels, Agricultural, Industrial and Systems, Materials Science, Nuclear, Textile, Welding), Education (Agricultural, Birth through Kindergarten, Business, Marketing, Christian, French, Health, Physical, Special, Middle Grades, Music, Rehabilitation, Social Studies, Sport Coaching, Technical, English, History, Theater), Management (Agricultural Operations, Animal, Aviation, Bakery, Environmental, Forest, Hotel and restaurant, Hospitality and tourism, Housing, Human Resource, Industrial, International, Economics, Multimedia, Network and Telecommunications, Nonprofit, Office, Operations, Parks and Recreation, Professional Golf, Risk and Insurance, Sports, Supply Chain, Wildlife), Agronomy, Air Force, Military, and Navy Studies, Agronomy, Allied Health Leadership, Technology (Animal, Aeronautical, Aviation Flight, Biological, Dairy, Electro-mechanical Systems, Information, Medical, Nuclear, Polymers and Coatings), Apparel Merchandising, Architecture, Design (Environmental, Art, Graphic, Apparel), Athletic Training, Audio (Production, Visual Communication), Biological Illustrations, Broadcasting, Building Construction, Business, Marketing, Computer Science, Counseling, Cybersecurity, Pre-professional (pre-health, pre-dentistry, pre-law, pre-optometry, pre-pharmacy, pre-seminary, pre-veterinary), Food and Nutrition sciences, Digital Forensics, E-commerce, E-business, Forestry, Fitness & Sports sciences, Fire and Emergency Services, Hospice and Palliative Studies, Illustration, Journalism, Music Production and Recording Arts, Nursing, Occupational Safety, Occupational Therapy, Paralegal, Personal Finance Planning, Pharmacy, Physical Therapy, Public Relations, Real Estate, Practical Theology, Secretarial Science, Social Work, Simulation Animation and Gaming Major, and Speech Pathology.



Chapter 9

**Appendix Table 9.1. Share of Students from Richest 10% of Families Who Enrolled in Selective Colleges, Two Definitions of Selective Colleges, 1972, 1989/90, and 2008/09**

	Survey wave		
	1972	1989/90	2008/09
Of those enrolled, percentage from richest 10% of families			
18 highly selective private colleges	19.8	20.4	20.6
56 selective private and public colleges	15.2	15.3	15.6
Number of students:			
with income information	91,175	94,547	110,223
attending one of 18 highly selective colleges	7,309	7,557	6,044
attending one of 56 selective public and private colleges	27,926	28,111	32,759
Number of students from richest 10% of families			
with income information	9,118	9,455	11,022
attending one of 18 highly selective colleges	1,446	1,538	1,243
attending one of 56 selective public and private colleges	4,258	4,299	5,109

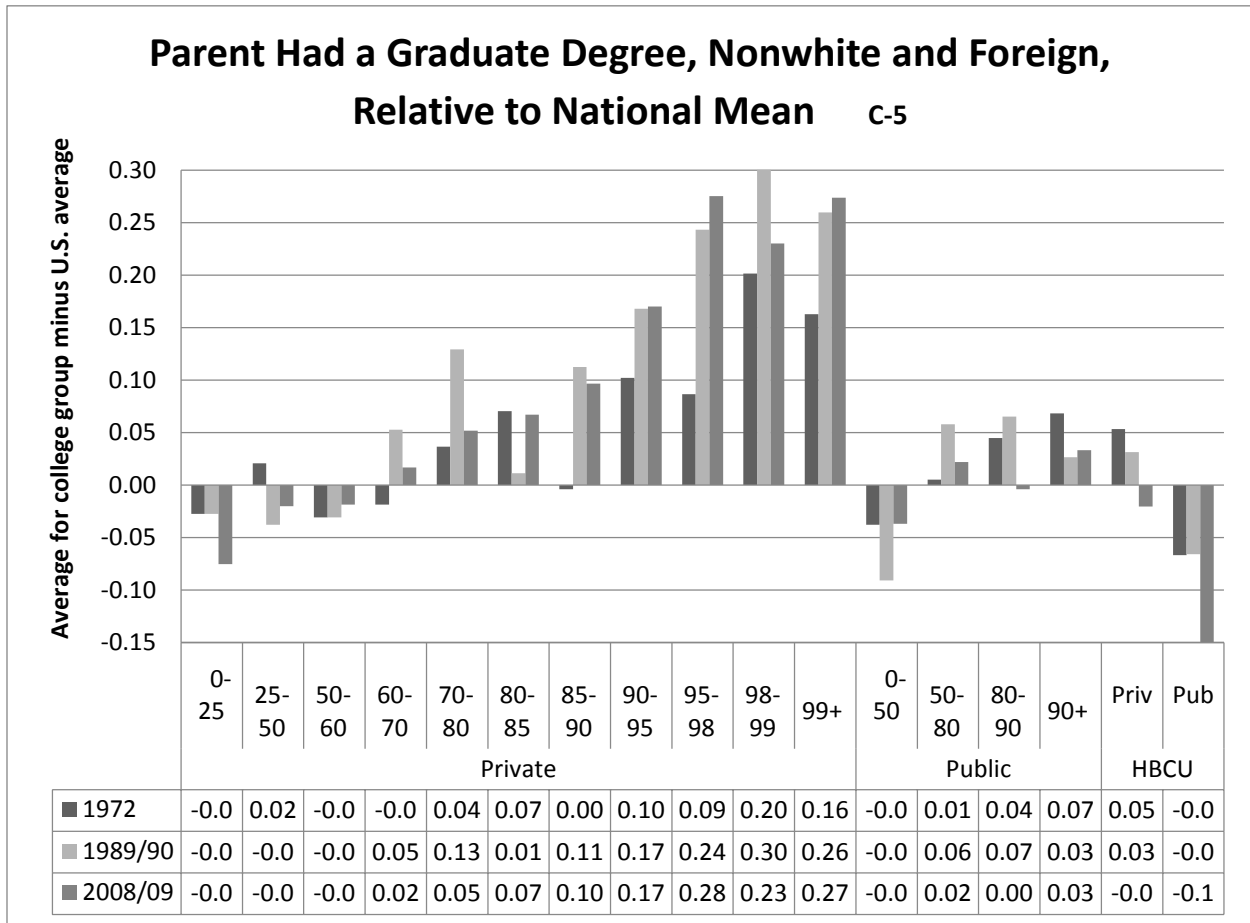
Note: figures in the first row of the table show the percentage of students in one of the 18 private highly selective colleges who were among the 10% of students with the highest family incomes in the specified survey wave. To trim the number in the last income category to reach exactly 10% of all surveyed students, those in that last category were ranked according to father's education and mother's education. Where ties remained after those rankings, students were picked at random from those remaining until exactly 10% of students were identified.

(An alternative approach used median family income of the student's home ZIP code to rank students in the last self-reported income category, an approach that could be used only for 1989/90 and 2008/09, the only two waves for which such data were available. After ZIP code median income, father's education and mother's education was used to break remaining ties. This approach produced almost identical percentages for the 1989/90 wave but somewhat lower percentages for 2008/09. For the percentage of students enrolled in the 18 colleges who came from top-10% family income families: 20.3 (vs. 20.4 using the initial approach) and 19.5 (vs. 20.6) in 1989/90 and 2008/09, respectively. For the 56 colleges, the comparable percentages were: 15.3 (vs. 15.3) and 15.1 (vs. 15.6), respectively.)

The 18 highly selective private colleges had average SATs in 1970 at the 98th percentile or above. They were: Amherst, Brandeis, Cal Tech, Dartmouth, Harvey Mudd, Haverford, Rice, Sarah Lawrence, Swarthmore, Carleton, Hamilton, Johns Hopkins, Middlebury, Mount Holyoke, Princeton, Reed, Wesleyan, and Williams.

[(C-40) table based on concentration of high income students 061714 090315: Finished table]

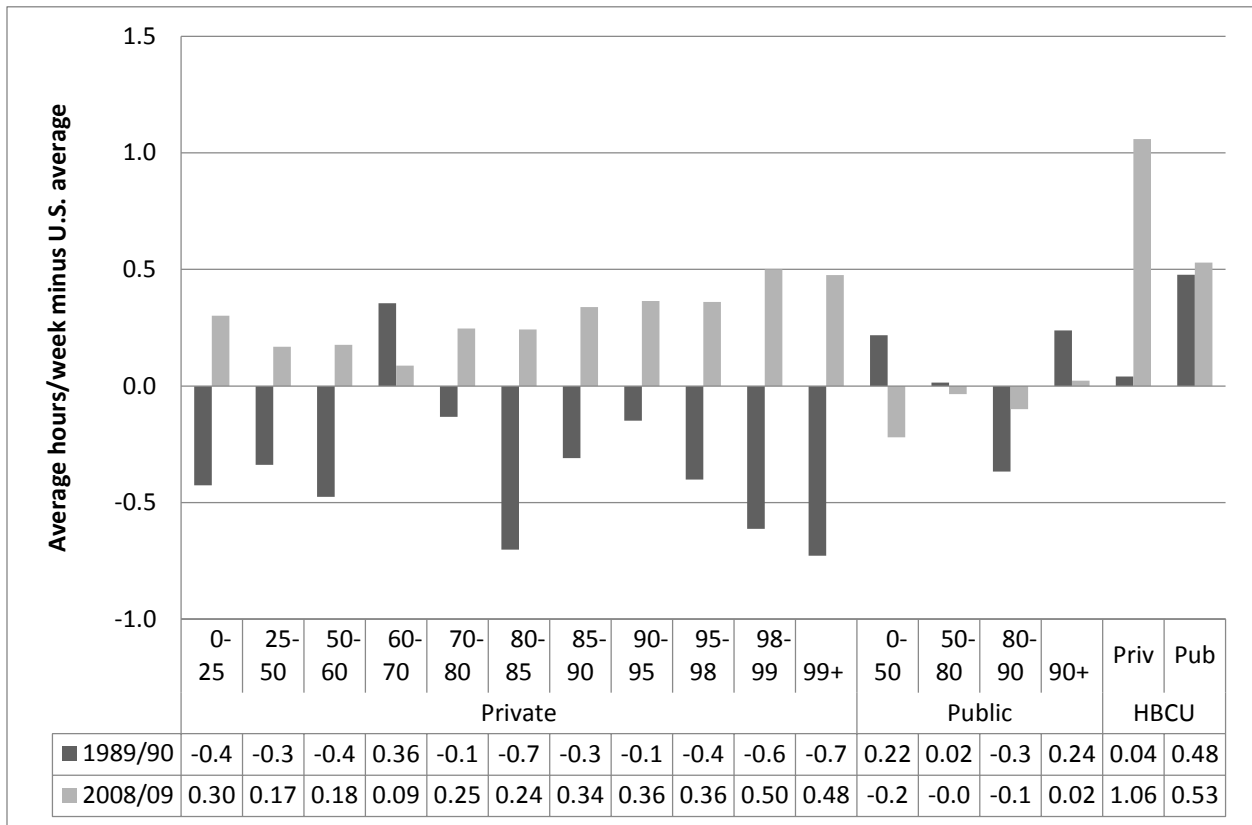
Appendix Figure 9.1. Parent Had a Graduate Degree, Nonwhite and Foreign Students, Relative to Mean for Nonwhite and Foreign Students in All 4-Year Colleges, by College Group and Survey Wave



Source: Freshman Survey, students from 188 colleges, three waves (1972, 1989 or 1990 and 2008 or 2009). The enrollment-weighted mean for all first-year nonwhite and foreign students in four-year colleges were: 0.118 in 1972, 0.227 in 1989/90, and 0.290 in 2008/09. [(C-5) FS bar graph & deviation fr mean 051914 022516 MH 040416: One parent grad degree (NW)]

Chapter 10

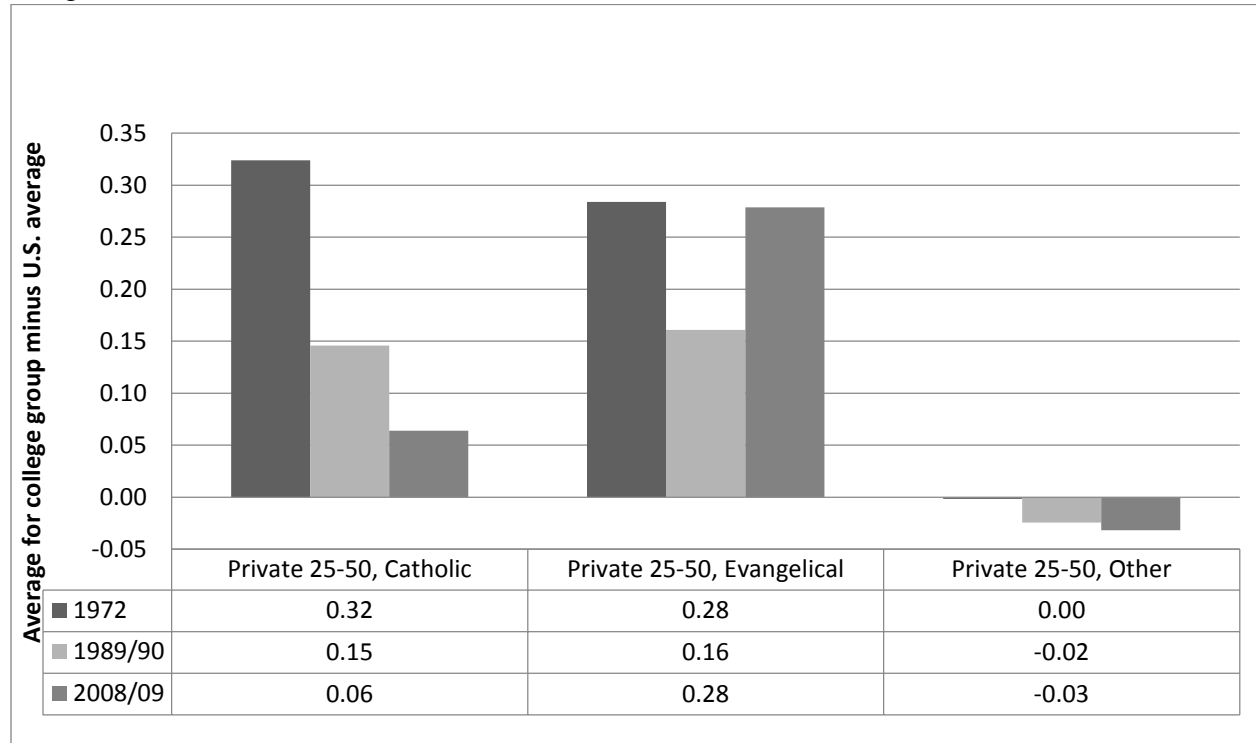
Appendix Figure 10.1. Hours per Week Spent Talking with Teachers in High School, Relative to All First-Year Students, 1989/90 and 2008/09



Source: Freshman Survey, students from 188 colleges, two waves (1989 or 1990 and 2008 or 2009). The question posed to first-year students was: “During your last year in high school, how much time did you spend during a typical week doing the following activities?” The figure summarizes the sum of responses for “talking with teachers outside of class.” Note: The enrollment-weighted means for all first-year students in four-year colleges were: 3.2 hours for 1989/90 and 1.5 hours for 2008/09. [C46, 6/11/14] [(C-46) time use by group and wave 061114: Talking w teachers]

Chapter 11

Appendix Figure 11.1. Religious Homogeneity, Private Colleges in 25<sup>th</sup> to 50<sup>th</sup> SAT Percentile, Religious Affiliation



Source: Freshman Survey, students from 188 colleges, three waves (1972, 1989 or 1990 and 2008 or 2009). Religious homogeneity is measured by the Herfindahl index, the sum of the squared proportions for each indicated religious group. Diversity is indicated by more negative values. The figure is based on responses about the “current religious preference” of the student. By college group and year, proportions were calculated for each of the following five categories: Jewish, Catholic, Protestant, Other, and the remaining category, which includes students who answered “none” and those who did not give an answer. For each group, the Herfindahl index was calculated by summing the squares of these five proportions. Higher values of the index indicate heavier concentration of students into one or more groups. Lower values indicate more even distributions of students in each of the religious groups. Note: The enrollment-weighted means for the index were: 0.299 for 1972, 0.346 for 1989/90 and 0.334 for 2008/09. [(C-45) FS bar graph & deviation fr mean detailed groups 052114 032816: Herfindahl religion]