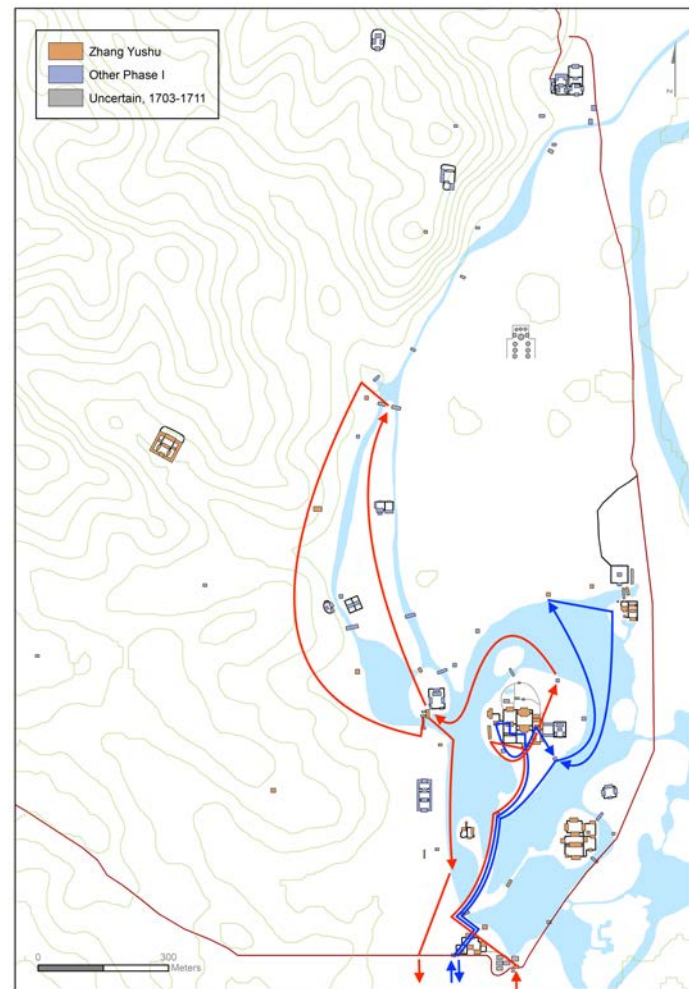
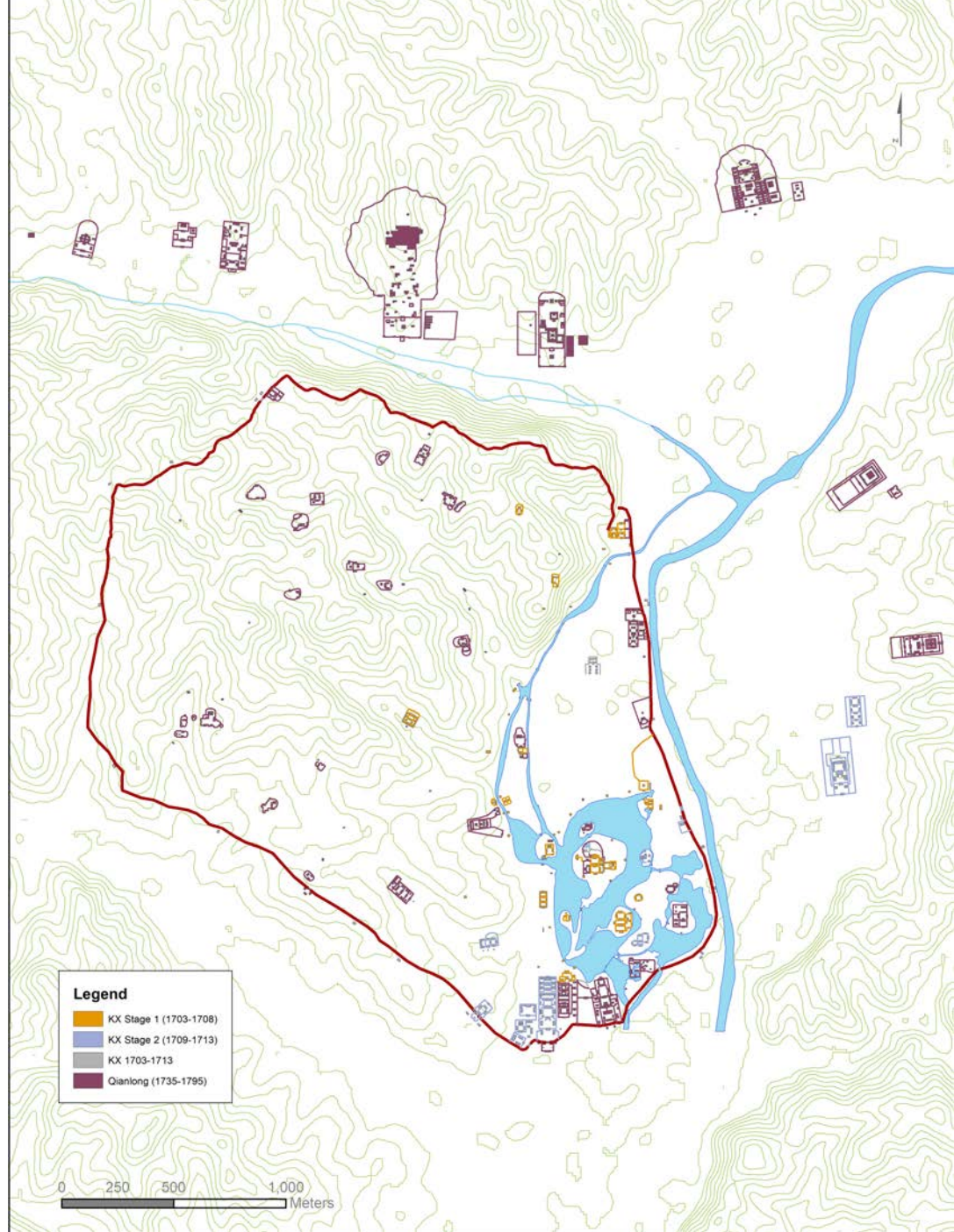
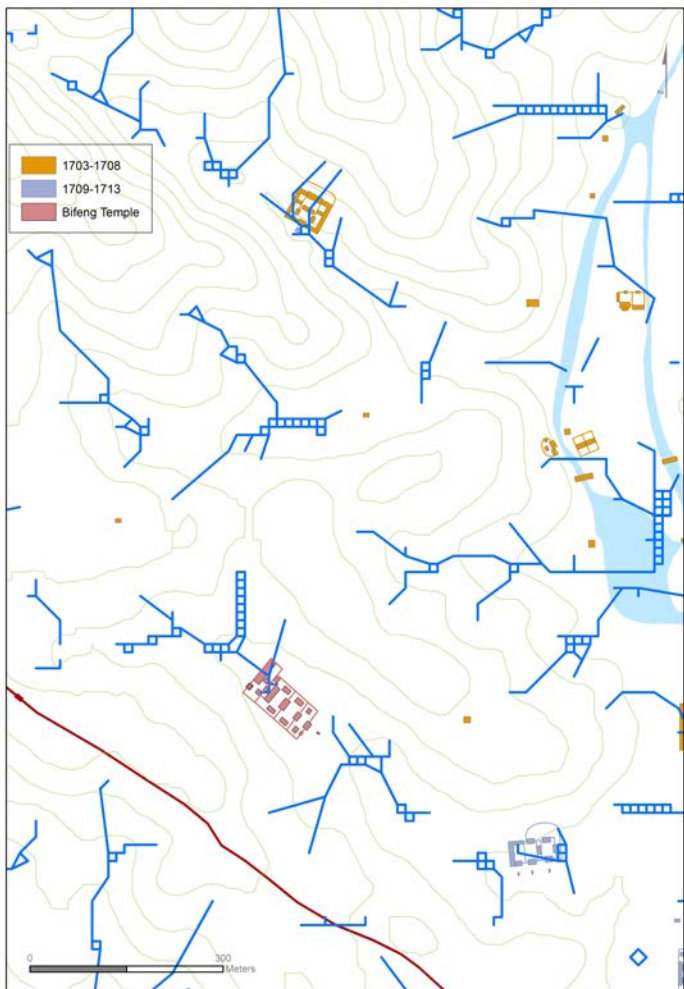


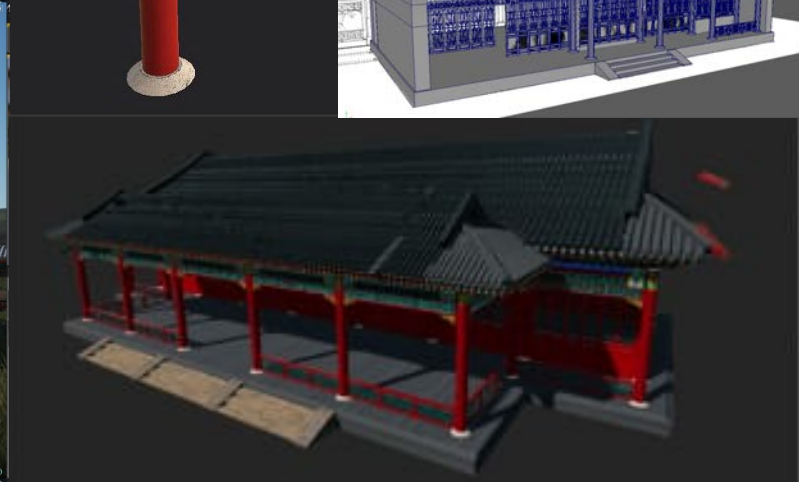
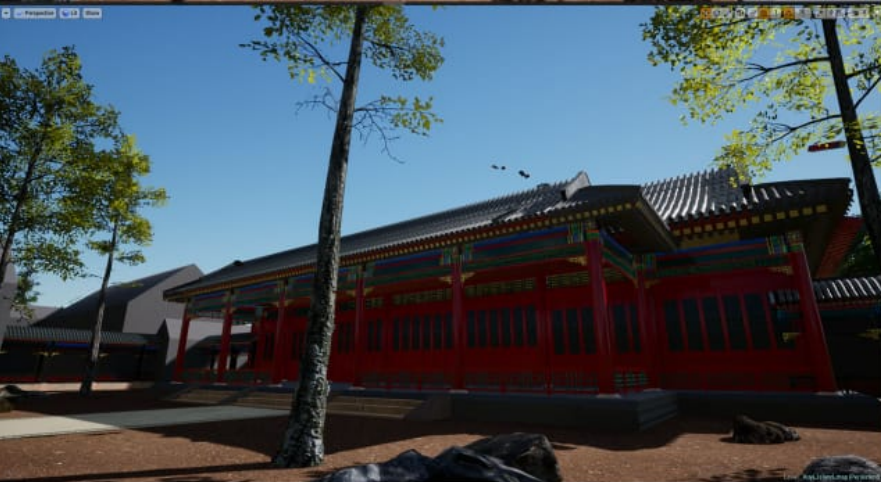
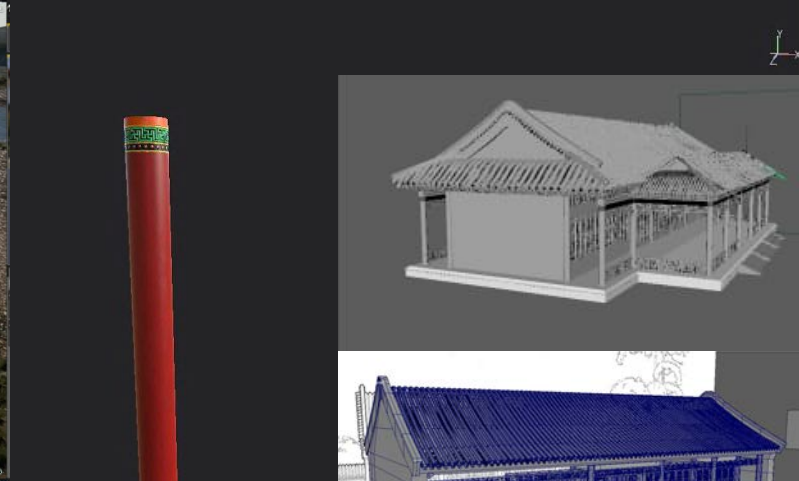
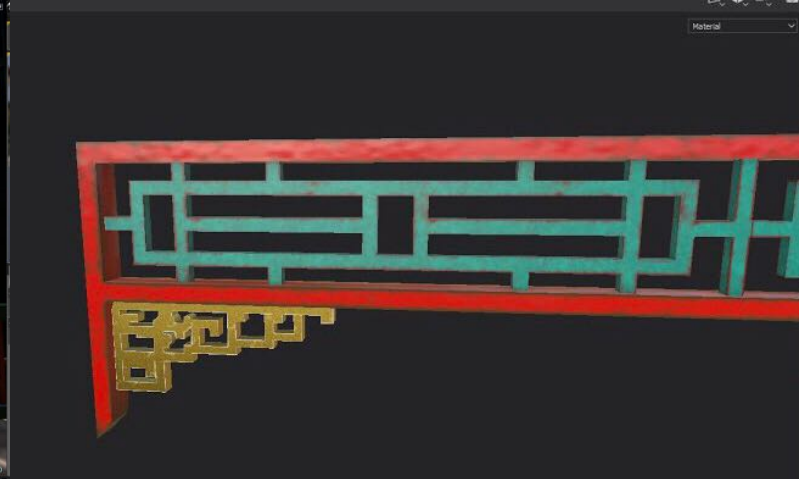
# Visualising the Mountain Estate

承德  
避暑山庄

Landscape, Architecture and Experience  
in Chengde

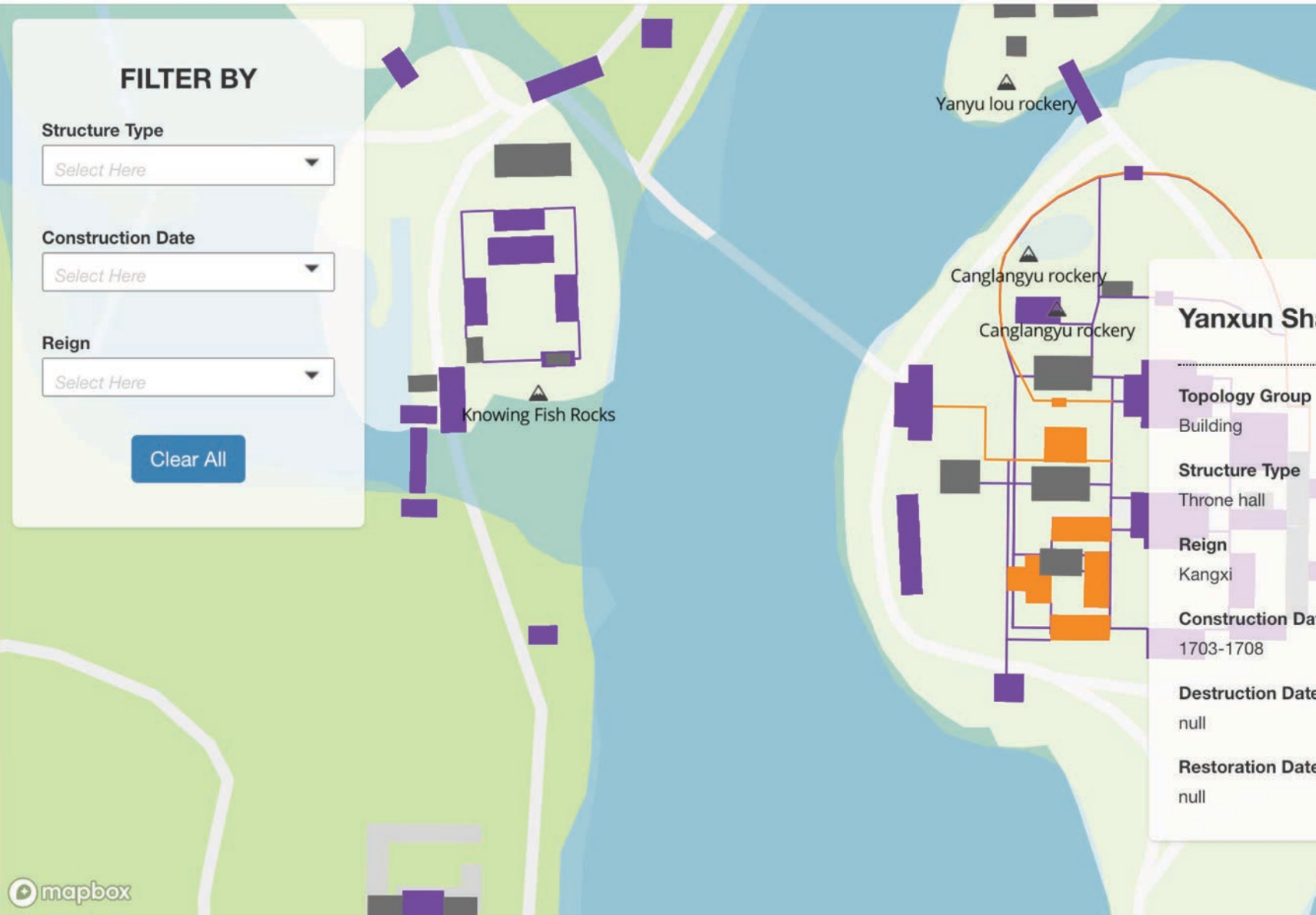
By  
**Stephen Whiteman**  
**Biju Dhanapalan**  
**Hedren Sum**





# VISUALISING THE MOUNTAIN ESTATE

Landscape, Architecture, and Experience in Chengde



My Sites Visualising the Mountain Estate + New Edit Page Follow Enable Visual Builder Copy to a new draft Howdy, Hedren Sun Wai Yuen

## VISUALISING THE MOUNTAIN ESTATE

Landscape, Architecture, and Experience in Chengde

HOME ABOUT

### YANXUN SHANGUAN (延熏上館)

KEY DETAILS

**Date Constructed**  
1703-1708 (Kangxi Period) acc. to Zhang Yushu

**Location**  
Ruyi Island Palace

**Topology**  
Building (Palace, Throne hall)

GIS Polygon Coordinates  
[[117.93769851106, 40.9874549285258],

OTHER INFORMATION

**Other Names**  
-  
Inner walled construction  
1703 acc. to Chen (1995)

**Date Destroyed**  
-

**Date Altered / Restored**  
-

**Extant**  
Ruyi Island Palace

**Hypothetical**  
-

**As numbered by Chen Baosen**  
65

**Mentioned by Zhang Yushu**  
Yes

**Depicted in Leng Mei**  
Yes

**As appeared in Kangxi's 36 Views**  
V2, V3, V4

**As portrayed in Views**  
RH24

**Named in Zhang Yushu's 16 Views**  
-

**Structure Description**  
-

**Location Description**  
-

**Additional Notes**  
-

**Object ID**  
b119

**Structure ID**  
189

**Group ID**  
H3

Experience in 3D

Accompanying Images

All rights reserved. Powered by Office of Information, Knowledge and Library Services (OIKLS), NTU Singapore - blogs@NTU