

Community Outreach, Engagement, and Equity



Quarterly Newsletter



© Estlin Hals



Stakeholder Spotlight



CORNELL P. WRIGHT

As Healthier Generation's first chief health equity officer, Cornell P. Wright, MPA previously served as the executive director of the North Carolina Department of Health and Human Services, Office of Minority Health and Health Disparities. At the height of the COVID-19 pandemic, Wright was recognized by various state and national leaders for creating and co-leading the Historically Marginalized Populations Workgroup to ensure that the inequities and disparities exacerbated by the pandemic were addressed through focused response and recovery efforts. Mr. Wright is an active member of the DCI COEE Steering Committee.

What inspires you in your work?

I am inspired to help communities and families connect to resources and opportunities not always afforded to those in need. Being able to increase and improve access and promote equity in spaces that haven't always been in a position to benefit from resources and opportunities makes the work we all do worthwhile and meaningful on so many levels.

What initiatives do you lead at Alliance for a Healthier Generation?

My role at Healthier Generation focuses on implementing and enhancing our Health Equity and Justice, Equity, Diversity, and Inclusion (JEDI) initiatives. Internally, this means normalizing health equity and JEDI principles across the organization to improve our accountability, transparency, policies, and operations. Externally, it means developing new approaches to center those we serve based on lived experiences and provide thought-leadership and subject matter expertise for industry trends and innovative strategies

What inspired you to join the DCI COEE Steering Committee?

I was inspired to join the Steering Committee due to my deeply rooted connection to communities across the state and locally as well as my past DCI experience and work in patient navigation. The ability to help others has always been something that has motivated me, even as far back when I was child, hiding my grandfather's cigarettes and doing impromptu PSAs about why smoking is bad. Those childhood moments forged a foundation for me to go into public health, starting my career in the tobacco prevention advocacy space and public health policy.

Fun fact about yourself/an interest you have outside of work

Outside of work, I am a musician and music producer. Music is an amazing outlet for me and allows me an element of escape and self-care. I can play several different instruments but my main instruments are percussion instruments (drums). Another fun fact is that I am ambidextrous and can write equally as poorly with both hands



Community Outreach, Engagement, and Equity

MaryAnn Black

Distinguished Health Equity Lecture



In honor of State Representative and Associate Vice President Mary Ann Black for her extraordinary leadership, enduring impact, and powerful advocacy across our community

Keynote Speaker



Marcella Nunez-Smith, MD, MHS

Associate Dean of Health Equity Research
C.N.H. Long Professor of Internal Medicine
Associate Director, Yale Cancer Center
Yale University

**Opening remarks by Chancellor
Washington**

Join Us



Feb 9th, 2023



11:00 AM-1PM



**Mary Duke
Trent Semans
Great Hall**

Register by clicking [here](#)

Dr. Nunez-Smith's research focuses on promoting health and healthcare equity for structurally marginalized populations with an emphasis on centering community engagement, supporting healthcare workforce diversity and development, developing patient reported measurements of healthcare quality, and identifying regional strategies to reduce the global burden of non-communicable diseases



Announcements

INTRODUCING...



Dalia Antunez, MSW, LCSWA, is COEE's new bilingual community-facing patient navigator. Dalia graduated from UNC-Greensboro with a bachelor's in Social Work. She is a licensed clinical social work associate and has experience addressing social determinants of health in high-needs pediatric populations. Dalia looks forward to collaborating with community leaders to increase individuals' access to care and cancer navigation services.



Madison Butler, a Biology major at Duke University, is COEE's new communications intern. Madison is a sophomore at Duke and plans to pursue a career in surgery. In addition to Marketing for COEE, she is the social media marketer for Duke's Minority Association for Pre-med students (MAPS) and Questbridge. Madison looks forward to broadcasting the accomplishments of the DCI community to help expand their catchment area and cancer prevention initiatives.



Tahmeko McDonald, a Durham native is COEE's new administrative assistant. Tahmeko graduated from North Carolina Central University. After working part-time in data collection for over 10 years, she has recently decided to make a career shift into clinical trials. She has worked on various studies such as North Carolina Quitline, virtual doctor visits, breast and ovarian cancer. Tahmeko likes to volunteer within the community in her spare time.



DCI COEE SPRING RFA

The DCI is currently accepting applications for the Cancer Research Pilot grants!

Pilot grant focus areas this year are:

- 1) DISPARITIES
- 2) COMMUNITY ENGAGED RESEARCH

Projects that focus on measuring and eliminating health disparities (Disparities RFA) and reducing the burden of cancer in diverse patients, populations, and communities in the DCI catchment (COEE pilot) area are invited

Click [here](#) to schedule a consultation with the DCI COEE office for assistance in identifying community partners, review of methodology and the DCI CREST dashboard, and community engagement approach.

Due Dates for Spring 2023

Application Deadline: March 14, 2023

Outcome Announced: June 1, 2023

Start Date: July 1, 2023

Progress Report Deadline: August 1, 2024

COEE Foundational Training

The DCI is committed to promoting a clinical and research workforce that is educated and mobilized to achieve meaningful impact in reducing the burden of cancer in our catchment area.

To achieve this goal, the DCI COEE program has developed a foundational curriculum to educate all faculty, staff, and trainees on the principles, approaches, and considerations for respectful and impactful community engagement.



INTRODUCTION

Currently available via CITI

- Introduction to community-engaged & community-based participatory research
- Ethical and practical considerations in community-engaged research
- Questions change everything in community engagement (TEDx)

COMMUNICATION

Currently available via LMS

- Communicating Your Science to Everyone Else
- How do we share our research?

Speaker: Karl Bates, Executive Director, Research Communications

CASE STUDY #1

Currently available via LMS

- Advancing your science and impact with patient advocacy

Moderator: Dr. Jenny Freedman

HISTORY

Currently available on LMS

- Duke Hospital and the Durham Community
- A conversation about race and memory

Speakers for this module



Dr. Jeffrey Baker



Dr. Damon Tweedy

UPCOMING CASE STUDIES

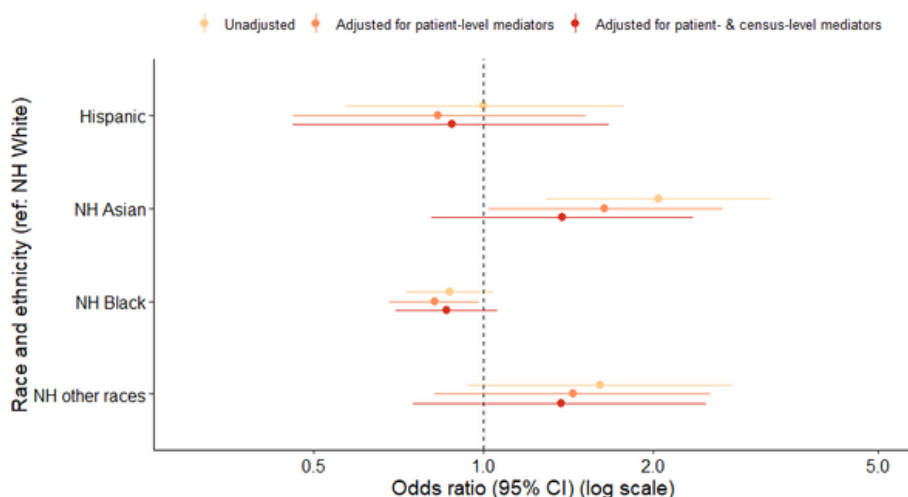
Winter 2023

- Community engaged clinical program
- Patient advocates in basic science research
- Co-developed behavioral interventions
- Partnering with Faith-based organizations
- Aligning research programs & community needs

For more information and direct links to each training, please visit our website [here](#).



Likelihood of NGS testing by race and ethnicity



Background: Next-Generation Sequencing (NGS) tests are critical for determining eligibility for targeted therapies and clinical trials. Among patients diagnosed or treated with metastatic solid tumors at Duke between 2014 - 2019, we evaluated racial disparities in receipt of NGS

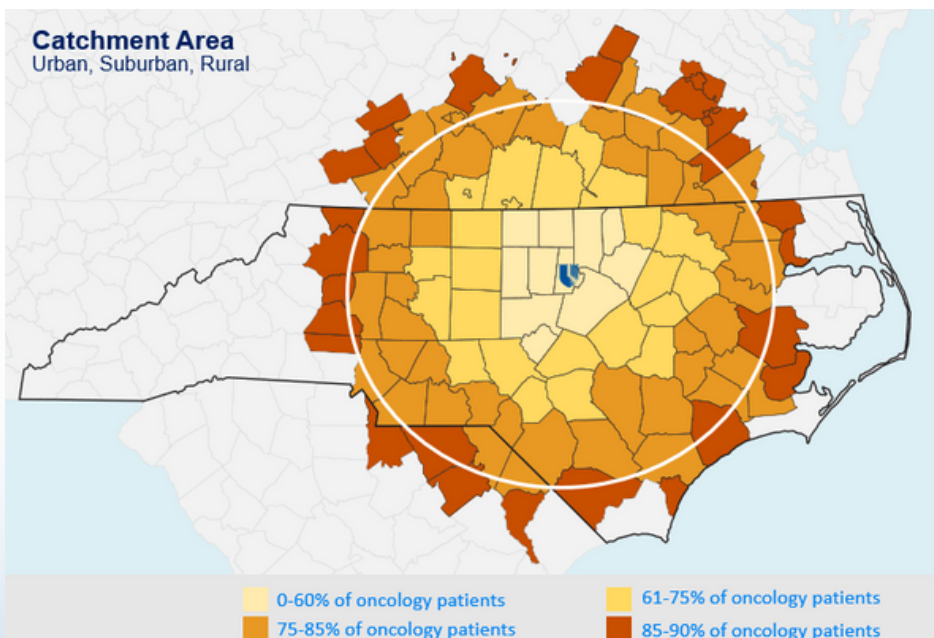
Approach: Funded by the V Foundation Mission Grant, NGS data from the Molecular Registry of Tumors (PI: John Strickler) was merged with the CREST dashboard (PI: Tomi Akinyemiju) for patient demographic, clinical and social-determinants of health data

Findings: In unadjusted analysis, Non-Hispanic (NH) Black patients were less likely to have received NGS testing (OR: 0.87, 95% CI: 0.73-1.04) compared to NH white patients. The disparity persisted after adjusting for patient-level and census tract-level SDOH variables. This work underscores the importance of identifying and addressing barriers to genomic testing, particularly for NH Black patients with cancer.



CATCHMENT AREA

Catchment Area
Urban, Suburban, Rural



North Carolina (67 counties): Alamance, Alexander, Alleghany, Anson, Beaufort, Bertie, Bladen, Cabarrus, Caswell, Catawba, Chatham, Chowan, Columbus, Craven, Cumberland, Davidson, Davie, Duplin, Durham, Edgecombe, Forsyth, Franklin, Gates, Granville, Greene, Guilford, Halifax, Harnett, Hertford, Hoke, Iredell, Johnston, Jones, Lee, Lenoir, Lincoln, Martin, Mecklenburg, Montgomery, Moore, Nash, New Hanover, Northampton, Onslow, Orange, Pamlico, Pender, Person, Pitt, Randolph, Richmond, Robeson, Rockingham, Rowan, Sampson, Scotland, Stanly, Stokes, Surry, Union, Vance, Wake, Warren, Wayne, Wilkes, Wilson, Yadkin

Virginia (31 counties): Wythe, Carroll, Pulaski, Giles, Montgomery, Floyd, Patrick, Henry, Franklin, Roanoke, Botetourt, Bedford, Pittsylvania, Campbell, Halifax, Charlotte, Mecklenburg, Lunenburg, Prince Edward, Brunswick, Buckingham, Fluvanna, Greensville, Nottoway, Amelia, Dinwiddie, Sussex, Southampton, Prince George, Chesterfield, and Henrico.

South Carolina (6 counties): Lancaster, Darlington, Marion, Malboro, Dillon and Chesterfield



Around the Catchment



On Jan 28th 2023, DCI COEE hosted it's first ever Community & Scientist Roundtable, featured at this event were scientists and community leaders representing the catchment area and organizations such as Duke Cancer Institute, UNC, UVA, VCU, El Centro, and more.



On November 4th 2022 (L) and December 3rd 2022 (R), the DCI COEE team hosted two Community Table luncheons in Greensboro and Durham, NC. The goal of these community tables were to bring together community leaders and DCI scientists to learn more about community priorities and how DCI can partner to help address health needs identified by communities across the catchment area.



Annual CAC Appreciation Dinner on Dec 1st 2022, with members of the DCI CAC, Steering committee, DCI clinicians and scientists to celebrate the outstanding accomplishments over the past year.

COE and DEI leaders from DCI, Virginia Commonwealth University and University of Virginia at DCI's Community & Scientist Roundtable on Jan 28th. Pictured from left to right - Dr. Marquita Taylor - UVA, Dr. Tomi Akinyemiju - DCI, Caroline Riedstra - UVA, Sarah Lynch - UVA, Josly Pierre-Louis - VCU, Dr. Tammara Watts - DCI, and Dr. Tremayne Robertson - VCU.

UPCOMING EVENTS

February 2023

- [MaryAnn Black Distinguished Health Equity Lecture](#) (Durham, NC; Feb 9)

April 2023

- [Women's Health Awareness Day 2023](#) (Durham, NC; April 15)

May 2023

- [SAICEP Webinar - Dr. Gachupin](#) (Virtual; May 3)

Join us for another exciting SAICEP Webinar featuring
Dr. Francine Gachupin on May 3rd.
Please add to your calendars, register [here](#).

SOUTHEASTERN AMERICAN INDIAN CANCER HEALTH EQUITY PARTNERSHIP

FREE CE Credits
CME • NCPD/CNE



May 3
Wednesday
12:00 – 1:00 PM EST/EDT

learn.unccln.org/05032023



Available in one month

learn.unccln.org/spoc



This program co-provided with
UNC Digital and Lifelong Learning
and UNC Lineberger Cancer Network



UNCLCN SITES

UNCLCN Website
UNCLCN Learning Portal
Upcoming Live Webinars

unccln.org
learn.unccln.org
learn.unccln.org/live-webinars

DISCLOSURE STATEMENT

Activity Director: This activity has been planned and implemented under the sole supervision of the Cancer Director, William H. Wood, MD, MPH, in association with the UNC Office of Continuing Professional Development (CPE). The course director and CPE staff have no relevant financial relationships with ineligible companies as defined by the ACCME.
Speaker(s): The presenter has no relevant financial relationships with ineligible companies as defined by the ACCME.



Francine Gachupin, PhD, MPH
Associate Professor
Department of Family and Community Medicine
College of Medicine
University of Arizona

WEBINAR DESCRIPTION

In working to address Native American cancer health disparities, it is imperative to build partnerships with tribal communities to increase their trust in the potential benefits of cancer research efforts. The Partnership for Native American Cancer Prevention was established in 2002 and the Partnership's approach is to expand capacity for culturally sensitive and community-relevant research on cancer and to continue to develop respectful collaborations that empower sovereign Native American communities to define, implement, and achieve their goals for cancer health equity.

LEARNING OUTCOMES

- Identify key elements needed in establishing research partnerships with sovereign Tribal Nations
- Describe the three primary pillars of the Partnership for Native American Cancer Prevention
- Locate additional cancer resources that include Native American perspectives

These webinars are a collaboration between

Past Events

October 2022

- Taste of China Festival, Cary, NC (Cary, NC; Oct 1- Rescheduled due to weather)
- White Ribbon Build, Duke Cancer Institute (Durham, NC; Oct. 1)
- Biannual Health Week-Mexican Consulate Health Fair (Raleigh, NC; Oct 1)
- What's Best for Breast (Virtual; Oct 8)
- Fiesta con los Vecinos (Raleigh, NC; Oct 14)
- Occaneechi Band of Saponi Nation Pow Wow (Burlington, NC; Oct 22-23)
- American Cancer Society, Making Strides Against Breast Cancer (Raleigh, NC; Oct. 22)
- Sister's Network 18th Annual Block Walk & Mammogram Event (Raleigh, NC; Oct 29)

November 2022

- DCI COEE Community Roundtable (Greensboro, NC; Nov 4)
- Rosa Foundation Community Health Fair (Greensboro, NC; Nov 5)
- Wendell Chamber Harvest Festival (Raleigh, NC; Nov 5)
- Lung Cancer Initiative's Annual Evening of Hope Gala (Raleigh, NC; Nov. 5)
- American Indian Women of Proud Nations (Nov 5)
- American Public Health Association's Annual Conference (Boston, MA, Nov. 6-8),
- Boys & Girls Club Breakfast of Champions (Raleigh, NC; Nov 7)
- Durham Partners Against Crime (PAC) 4 & 5 (Durham, NC; Nov. 12)
- Guatemala Consulate Health Window (Raleigh, NC; Nov 15)
- NC American Indian Heritage Celebration (Raleigh, NC; Nov 19)
- Single Moms Unity Rally and Fun Day (Raleigh, NC; Nov. 19)
- Lung Ca Awareness Month Health Professional Training (Online/Zoom; Nov 29)
- Faith Health Conference (Nov 29)

December 2022

- DCI COEE Community Table (Durham, NC; Dec 3)
- CHW Summit (Online/Whova; Dec 2)
- 50 Hoops Legend Prostate Workshop (Online/Zoom; Dec 8)

January 2023

- Enloe High School Panel (Raleigh, NC; Jan 18)
- DCI COEE Community and Scientists Roundtable (Durham, NC; Jan 28)



@DukeCOEE



dcicoee@dm.duke.edu



<https://sites.duke.edu/dcicoee/>