

# Quarterly Newsletter



## Community Outreach, Engagement, and Equity

### The DCI Community Outreach, Engagement and Equity Program

The Duke Cancer Institute remains committed to reducing the burden of cancer and promoting health equity, beginning with communities in our diverse catchment area. The COEE program facilitates community-impacting research, education and clinical care for the communities we serve. We look forward to working with all DCI members to facilitate and catalyze impactful research that benefits our communities.

We are excited to share our ongoing activities with Duke, DCI scientists and community partners. Have a community-relevant story to share? Email us to be featured in the next newsletter!

You may reach us by email at: [dcicoe@duke.edu](mailto:dcicoe@duke.edu), visit our website to learn more or submit an intake form, or follow us on social media via the links on page 6

### Community Advisory Council

**Duke Cancer Institute's Community Advisory Council (CAC)** includes community members with diverse backgrounds and perspectives. CAC members provide important insights into DCI scientific activities, and help with community outreach events, including cancer education, cancer screening, and dissemination of results to various communities.

We are proud to welcome and introduce our 2022 CAC members. Not pictured below: Ping Zhang (co-chair), Marsha Edwards, Claudia Graham, Joanne McCallie, Crystal McGrit, Paola Rodriguez



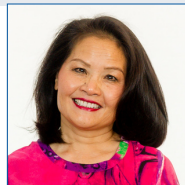
**Jeff Dowd**  
Co-Chair  
Orange Grove  
Baptist Church



**Liana Adrong**  
Montagnard Dega  
Association



**William Battle**  
Emmanuel Health  
Education



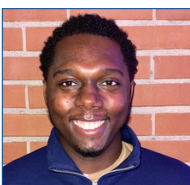
**Lily Chen**  
NCCU Nurse Educator



**Jeff Forde**  
Men's Health Council



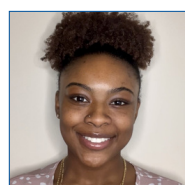
**Demetrius Harvey**  
Black Men's Health  
Initiative



**Shaun Jones**  
MPH Epidemiology  
UNC Chapel Hill



**Randolph Keaton**  
Black Farmers  
Association



**Jireh McCallum**  
Advance Community  
Health



**Sue McLaurin**  
Covenant Presbyterian  
Church

### IN THIS ISSUE

- Community Advisory Council
- SAICEP
- COEE Foundational Training
- CREST Catchment Area Analysis



### How to Contact DCI COEE

COEE Email:

[DCICOE@duke.edu](mailto:DCICOE@duke.edu)

[Complete: Intake Form](#)

### Welcome Yadurshini Raveendran!



Yadu joins our team as COEE Program Leader. She is a recent graduate of the Duke Global Health Masters Program. Her research interests are in cancer disparities, global nutrition, and mhealth. She is also co-founder of the Duke Decolonizing Global Health Working Group.



## SOUTHEASTERN AMERICAN INDIAN CANCER HEALTH EQUITY PARTNERSHIP (SAICEP)

A COLLABORATION BETWEEN



LINEBERGER COMPREHENSIVE  
CANCER CENTER



The Southeastern American Indian Cancer Health Equity Partnership (SAICEP) is a unique collaboration initiated by the Community Outreach and Engagement teams at the NCI Comprehensive Cancer Centers at Duke, UNC Lineberger and Atrium Health Wake Forest Baptist, with a focus on understanding and addressing the cancer-related health needs of American Indian communities in our catchment areas and beyond.



**Bridging the Bench  
and the Bedside:**  
the amalgam of academic medicine and its  
effect on a cancer patient experience

**Dr. Hannah Worix, M.D.**  
Breast Surgical Oncologist  
Duke Cancer Institute

In February, Dr. Hannah Worix presented on patient archetypes that altered treatment approaches due to recent landmark clinical research studies. She discussed the Implications of sparse clinical data for American Indians and unique social determinants of health on cancer treatment outcomes in the AI community. Learn more [here](#).



In November, SAICEP partnered with UNC Pembroke and the Lumbee Tribal government to distribute cancer screening educational materials to members of the Lumbee community in Pembroke, NC. Click [here](#) to learn more about SAICEP!

# COEE Foundational Training

## Intro

[Click here to access on CITI](#)

## History

Part 1: Duke Hospital and the Durham Community

Part 2: A conversation about Race and Memory

[Access trainings on LMS here](#)

## Coming Next

### Case Studies:

Lessons from DCI community engaged studies. Summer-Fall 2022

### Community Perspectives:

Perspectives from diverse communities in our catchment area. Winter 2023

### What's Next?:

Building your own community engaged program. Fall 2024



Dr. Jeff Baker (left) and Dr. Damon Tweedy (right) presented a 2-part webinar as part of the COEE foundational training to DCI members. Dr. Baker provided historical perspectives on the complex history between Duke and the community it serves, and discussed how this history shapes contemporary relations that have implications for health equity. Dr. Tweedy facilitated a dialogue on these topics and provided additional context on how societal and historical factors influence the real and perceived access to, and quality of, clinical care at Duke.



# COEE Community Outreach Events

The COEE program partners with community members to develop engaging and impactful events to promote health equity across Duke, North Carolina, and more. This past quarter, COEE participated in and hosted multiple events, and continues to build and strengthen relationships with the community to meet cancer prevention needs in our catchment area. See below for COEE and partner events in the community.

## Upcoming Events

**Mar 19th**

Gut Patrol Community Health Fair

**Mar 23rd**

Gender Expansive Virtual event

**Mar 24th**

All Spanish Colon Cancer Awareness webinar

**Apr 9th**

Women's Health Awareness Program

**Jun 4 & 5**

DCI Men's Health Screening event

## 2022 Past Events

Please visit the COEE website for additional details and links to recordings for past events.

- Jan 10th-Barbers & Beauticians Health Ambassador Training
- Jan 19th - Cervical Cancer Awareness for Rural NC
- Jan 26th - COVID PSA for NCDHHS
- Jan 27th - Radon Awareness Month webinar
- Feb 10th - What's HOT in Women's Heart Health
- Feb 17th - Gut Patrol Colon and Stomach Cancer Webinar
- Feb 17th - National Prevention Cancer Month Webinar
- Feb - Lung cancer awareness month
- Mar 9th - Women's Health Webinar

## HEALTH FAIR

Presented by The Connection Place



Dr. Ruth Phillips  
Community Health Coalition



Meira Epplein, PhD  
Duke Cancer Institute



Angelo Moore  
PhD, RN, NE-BC  
Duke Cancer Institute



Dr. Gale Jones, PhD  
Life & Health Coach

Vendors, Food Demonstrations, Food Giveaway, Music, Exercise, Blood Pressure Check, Colon Screening Kit & More - \$25 Gift cards awarded if colon kit is completed and returned to the Community Health Coalition. Register at <https://bit.ly/gutpatrol>

Saturday, March 19, 2022

12-3 pm

Life Enrichment Center - 3805 Tarheel Club Road, Raleigh, NC 27604

## HEALTH FAIR



## Women's Health Awareness 2022

*Transforming Communities by Enhancing Women's Health*

**The Women's Health Awareness (WHA) Women's Wellness Conference is offering a virtual experience!**

**Saturday, April 9, 2022**

**Activities of the Day  
8:30 a.m. - 4:00 p.m. EDT**

**FREE** virtual health assessments, education sessions, healthy living sessions, and resources will be offered!

*What you learn could save your life!*



Link to register for the Gut Patrol Health Fair [here](#).

Link to register for the Women's Health Awareness Program [here](#).

## Age Adjusted Cancer Mortality Rates in North Carolina, 2015-2019

Trends in age-adjusted cancer mortality Rates (AAMR) per 100,000 population in North Carolina are presented below for NC, Durham, Wake and Orange counties overall and by race/ethnicity. Although AAMR rates have declined overall, rates in Durham county and for non-Hispanic Black and Hispanic individuals have increased in recent years.

Data source: North Carolina Cancer Registry

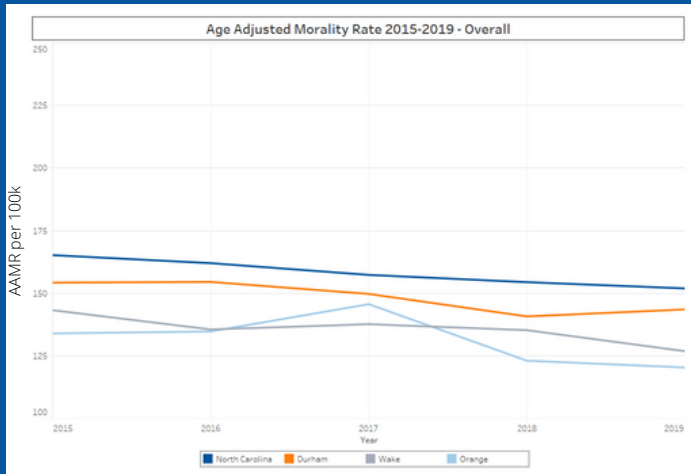


Fig 1: AAMR Overall

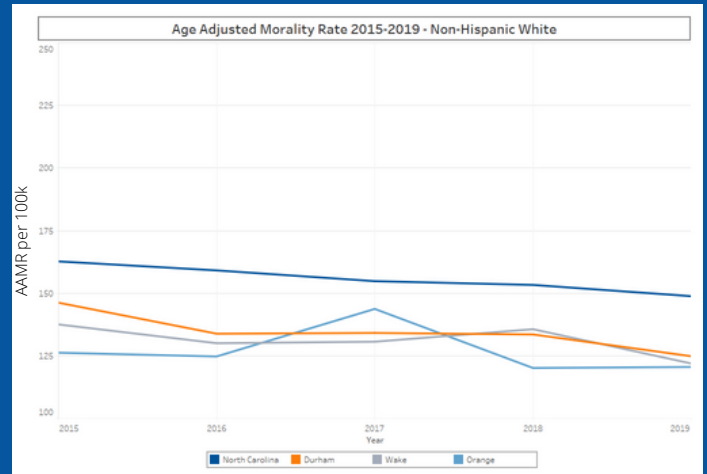


Fig 2: AAMR Non-Hispanic White

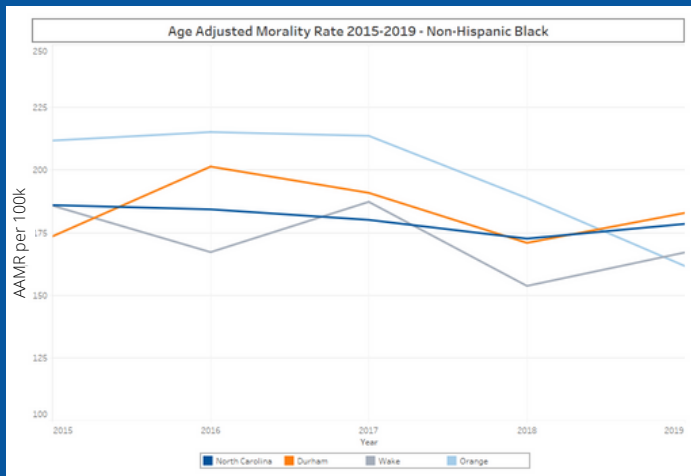


Fig 3: AAMR Non-Hispanic Black

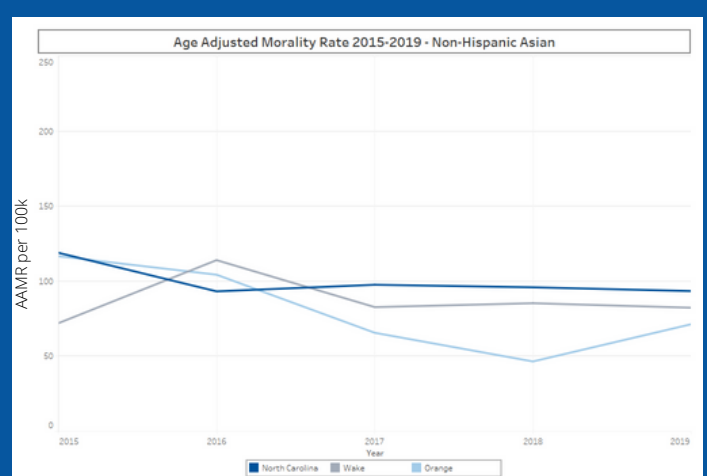


Fig 4: AAMR Non-Hispanic Asian

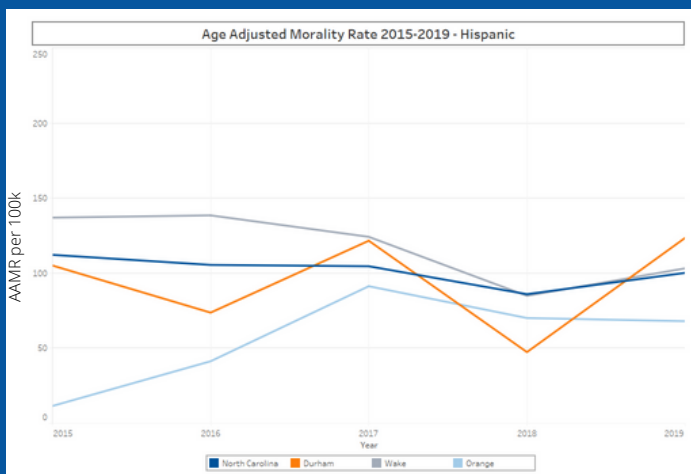


Fig 4: AAMR Hispanic

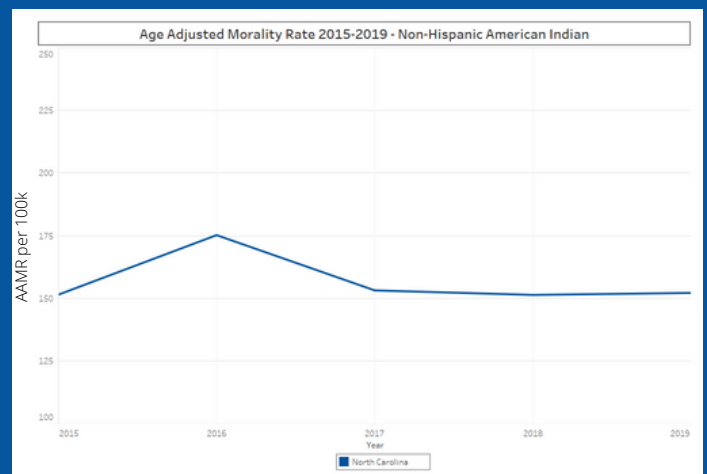


Fig 6: AAMR American Indian

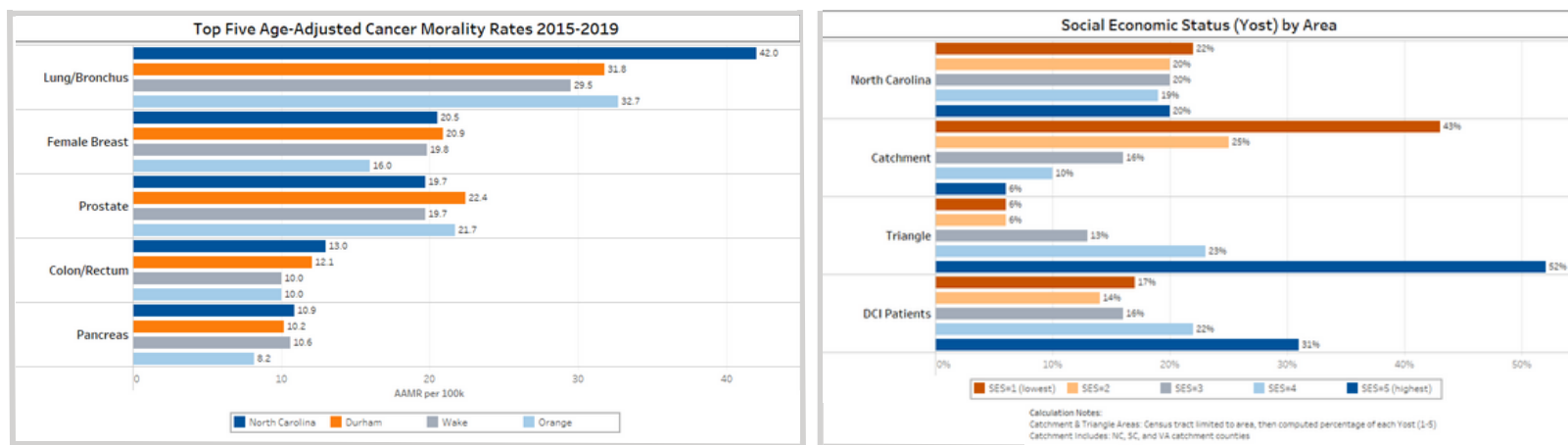




Center for Research to Reduce Disparities and Enhance Equity  
in Cancer through Systematic and Transformative Change

## AAMR by Cancer Type and Distribution of SES in NC, 2015-2019

The top five age-adjusted cancer mortality rates (per 100k) in North Carolina are presented below. Lung/Bronchus, female breast, prostate, colon/rectum and pancreatic cancer are the top causes of cancer deaths in North Carolina. Socio-economic status also varies by region; higher SES is concentrated in the triangle area, but lowest across Catchment area relative to NC state as a whole.



## DCI COEE-Relevant Publications, 2020-2021

A systematic review of DCI publications between 2019 and 2020 identified peer-reviewed articles relevant to cancer disparities, catchment area and community engagement. A total of 290 article met the inclusion criteria and were screened using the Covidence software. After review, 255 DCI articles were included as having relevance to COEE and cancer disparities, with over 60 articles related to disparities or social determinants of health. A summary of publications by topics are outlined below

Figure 1: Distribution of COEE-relevant DCI publications by category

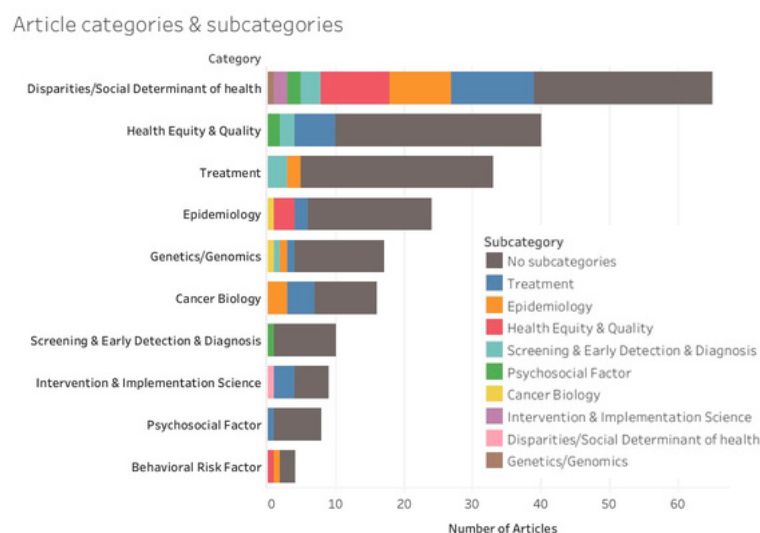
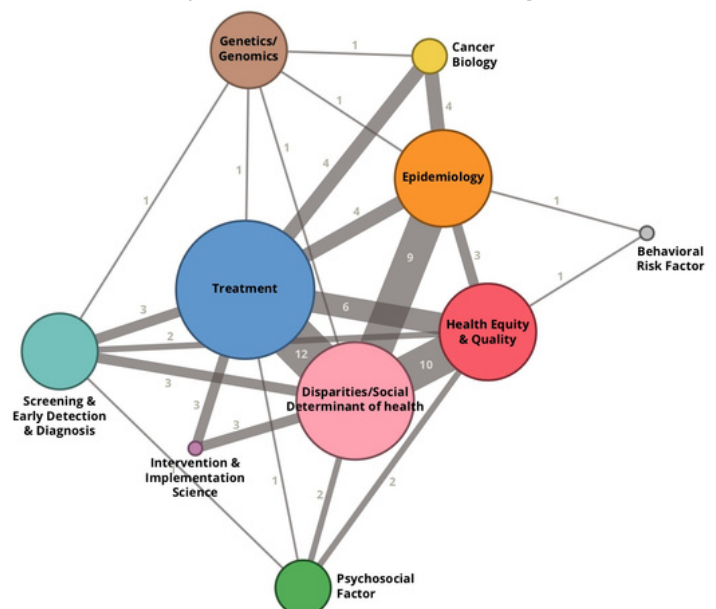


Figure 2: Visualization of overlap between DCI publications across categories



# COEE Reflections



Source: Community Advisory Council



Source: COEE Steering Committee



2021 Community Advisory Council  
Appreciation Dinner

Scan QR code to visit our  
website  
or click on the icons to  
follow us on social media!



## How to Contact DCI COEE

Email: [DCICOE@duke.edu](mailto:DCICOE@duke.edu)

Complete: [Intake Form](#)