

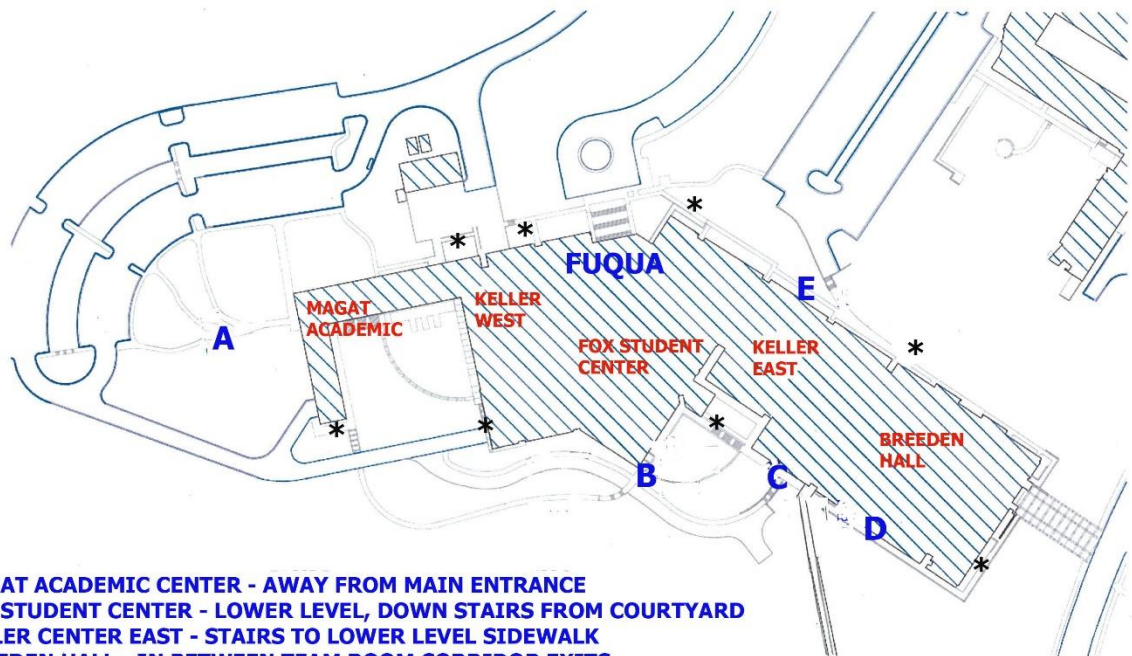
SMOKING POLICY

The Fuqua School of Business promotes a smoke-free environment. All of our indoor areas are smoke-free, as well as doorways, areas near windows that open and areas near fresh air intake vents. Our policy addresses all possible areas of exposure to protect our community and our visitors from secondhand smoke.

The use of tobacco products (including smokeless tobacco) shall only be authorized in designated areas on the Fuqua Campus. E-cigarettes (vaping) are classified as tobacco products and Fuqua also wishes to limit their exposure of secondhand smoke in our facility.

The following map denotes the only acceptable smoking and vaping areas on the Fuqua campus. These areas have been selected so minimal impact from passive smoke inhalation is realized, and to minimize the possibility of smoke entering through our fresh air intake vents, and conflicts with pedestrian traffic.

FUQUA OUTSIDE SMOKING AREAS



- A. MAGAT ACADEMIC CENTER - AWAY FROM MAIN ENTRANCE**
- B. FOX STUDENT CENTER - LOWER LEVEL, DOWN STAIRS FROM COURTYARD**
- C. KELLER CENTER EAST - STAIRS TO LOWER LEVEL SIDEWALK**
- D. BREEDEN HALL - IN BETWEEN TEAM ROOM CORRIDOR EXITS**
- E. KELLER CENTER EAST - BETWEEN FORMICA AND MOSLER STAIRWELL EXITS**

* Location of our outdoor air intake vents

All faculty, staff and students should become familiar with these guidelines, and Event Coordinators are responsible for communicating this information to all clients and potential users of Fuqua facilities.