


<b>QUARTERLY NEWSLETTER</b>	<p>THE AFRICAN-AMERICAN ADVANCE CARE PLANNING/PALLIATIVE CARE NETWORK</p>  <p>EXPERTS • ADVOCATING FOR • A GREATER • ENGAGEMENT WITH • RESOURCES</p>	<b>VOLUME 2 ISSUE 1</b>
---------------------------------	---	-----------------------------

## WELCOME NETWORK MEMBERS AND VISITORS!

**OUR MISSION:** Reduce racial disparities in advance care planning  
 Improve the health care experiences and outcomes of African-Americans  
 Engage in community-led research, academic collaboration, and intentional conversation

**OUR NETWORK:** Academics, clergy, clinicians, researchers, laypersons

### H

Highlight the current projects of Network members and share upcoming events for continued engagement

### E

Examine current data and trends used in advance care planning generally, and used for African-Americans

### L

List opportunities for collaboration between clergy, clinicians, researchers, and laypersons

### P

Provide a space to discuss how our work disseminates into the African-American community-at-large

**OUR INFORMATION:** To join or connect with the Network, please email [AA-ACP-PC-Network@div.duke.edu](mailto:AA-ACP-PC-Network@div.duke.edu).

## NETWORK MEMBER SPOTLIGHTS THIS QUARTER

CONGRATULATIONS, [KAREN](#) AND [DAVID](#)!

### **Karen Bullock, PhD, MSW**

*Louise McMahon Ahearn Endowed Professor  
 Boston College School of Social Work*



Professor Bullock has over 25 years of clinical practice experience in mental health and aging, with expertise in health care disparities. Her research focuses on cancer care, social support for older adults with serious illness, and cultural factors influencing health care outcomes. Professor Bullock serves on several national boards and committees, including the National Association of Social Workers (NASW), the National Committee on Racial and Ethnic Diversity (NCORED), and the American Cancer Society (ACS) Oncology Social Work Research Peer Review Committee. She is Principal and/or Co-Investigator for over \$5 million in federal grant funding. Following 11 years at NC State University and nine as the head of the School of Social Work, she began her new role at Boston College in Fall 2022. Congratulations, Karen!

### **David Emmanuel Goatley, PhD, MDiv**

*Sixth President  
 Fuller Theological Seminary*



President Goatley is an ordained Minister in the National Baptist Convention, USA, and is a constructive theologian whose scholarship and practice is at the intersection of theology, missiology, and leadership. He emphasizes cross-cultural experiential learning with indigenous groups and deepening impacts for leaders and churches. President Goatley is editor of *Black Religion, Black Theology: Collected Essays of J. Deotis Roberts* (2003) and author of *Were You There? Godforsakenness in Slave Religion*, and *A Divine Assignment: The Missiology of Wendell Clay Somerville*. Prior to his appointment, he was Associate Dean of Academic and Vocational Formation, Endowed Research Professor of Theology and Christian Ministry, and Director of Black Church Studies at Duke Divinity School. Congratulations, David!

**-- PROJECT HIGHLIGHT --***African-American Communities Speak Program*

**University of Alabama at Birmingham  
Center for Palliative and Supportive Care**  
Birmingham, AL



Moneka Thompson  
MDiv, MA, MS, BCC

**Reflections from**  
Ronit Elk, PhD  
and



**T**he UAB Center for Palliative and Supportive Care offers a three-hour skills-based training for clinicians created by the African American community to train on the community's cultural values, lived experiences, and recommendations for care. The program uses self-reflection and active learning techniques to provide participants with the foundation needed for improved communication and changed behavior with patients and caregivers.

Researchers from UAB, and New York and Boston, published a paper in the *Journal of Racial and Ethnic Health Disparities* highlighting the importance of respecting the deeply held beliefs of African American Christians and the data showing this community is less likely to receive their preferred end-of-life care. They held that there are two schools of thought among clinicians at end-of-life: aggressive care, which focuses on treating the illness or condition, and supportive care, which focuses on pain and symptom management. In this paper, researchers demonstrate how the term "aggressive care" is often used inappropriately to label the preferences of African American patients. This labeling of care can negatively influence the care conversations.

Associate Director for the UAB Center for Palliative and Supportive Care, Professor of Geriatrics,

Gerontology, and Palliative Care, and co-author [Ronit Elk](#), shared that "the data is clear – a larger portion of African American families reported that their loved one did not receive care that is in accord with what they requested in their final days of life." She discussed how Black Christian adults share a belief in miracles that shape their end-of-life care decisions, and combined with an underlying distrust in the health care system due to historical mistreatment, many African Americans often depend on their belief in God's healing power to perform miracles and heal family members, who are seriously ill. This combination of hope, miracles, and mistrust fuels the desire for life-sustaining interventions.

Staff Chaplain and co-author [Moneka Thompson](#) believes the takeaway for clinicians reading the paper or attending the training will be a greater understanding of the religious and cultural belief systems in this particular patient population. Rev. Thompson states that a few steps clinicians can take to ensure they are providing goal-concordant care to their patients is to: (1) be aware of their own biases towards the patient population that may fuel incongruent care; (2) use communication practices that encourage cultural sensitivity, humility, and curiosity; and (3) be fully present to the variety of religious and cultural beliefs that this population presents without feeling the need to mirror or compromise their own.

To read the full article titled, "Respecting Faith, Hope, and Miracles in African American Christian Patients at End-of-Life: Moving from Labeling Goals of Care as 'Aggressive' to Providing Equitable Goal-Concordant Care," click [here](#).

To learn more about the training, click [here](#).

**Other UAB faculty contributing to the program:**

[Shena Gazaway](#), PhD, MSN, RN

Assistant Professor

University of Alabama at Birmingham School of Nursing

**Other authors contributing to the article:**

[Elizabeth Chuang](#), MD, MPH

Assistant Professor

Albert Einstein College of Medicine, Yeshiva University

[Gloria White-Hammond](#), MD, MDiv

Swartz Resident Practitioner in Ministry Studies

Harvard Divinity School

## UPCOMING OPPORTUNITIES FOR ENGAGEMENT

(FREE, UNLESS OTHERWISE STATED)

### **Theology, Medicine, and Culture Initiative Duke Divinity School**

#### **Webinar**

“Health Equity is Not a Spectator Sport: A Radical Rerooting Using a Three Trees Analogy”

Presenter: Abraham Nussbaum, MD, MTS  
CEO, Denver Health

January 20, 2023 • 12:00 – 1:00 pm EST

Register [here](#).

### **Theology, Medicine, and Culture Initiative Duke Divinity School**

#### **Webinar**

“Racism: Driver of Health Disparities, Outlier in Our Theology of Illness”

Presenter: Jason Ashe, MDiv, ThM  
PhD candidate, U Maryland

February 3, 2023 • 12:00 – 1:00 pm EST

Register [here](#).

### **VITAS Healthcare**

#### **Webinar**

The Importance of Inclusion, Equity, and Diversity in Advanced Illness

Presenter: Diane Deese, one of four

February 8, 2023 • 1:00 – 2:30 pm EST

1.5 CME credit hours available to MD/DO, NP, PA

Register [here](#).

### **Samuel DeWitt Proctor Conference, Inc.**

#### **In-Person**

“Where Future Meets Legacy: Theoethics, African Spirituality, and Afrofuturism”

Presenter: Rev. Dr. Yvonne Delk, one of many

February 20-23, 2023 • Atlanta, GA  
\$348 – \$410 + lodging

Register [here](#).

### **Theology, Medicine, and Culture Initiative Duke Divinity School**

#### **Webinar**

“‘Many are Called...?’ Medicine as Ministry to Poor and Marginalized Communities”

Presenter: Daisey Dowell, MD  
Pediatrician, Lawndale Christian Health Center

March 3, 2023 • 12:00 – 1:00 pm EST

Register [here](#).

### **Conference on Medicine & Religion**

#### **In-Person**

“At the Limits of Medicine:  
Caring for Body and Soul”

Plenary Speaker: Farr Curlin, MD, one of three

March 12-14, 2023 • Columbus, OH  
\$245 – \$395 + lodging

Register [here](#).

### **Christian Community Health Fellowship**

In-Person and Livestream  
“Anchored: Prisoners of Home”

March 16-18, 2023 • Cincinnati, OH  
\$265 – \$375 + lodging

CE credit available for additional \$95.

Register [here](#).

### **VITAS Healthcare**

Webinar  
Advance Directives and Advance Care Planning

April 12, 2023 • 1:00 – 2:00 pm EST

CE/CME credit hour available in certain states.

Register [here](#).

### **Mayo Clinic**

In-Person and Livestream  
Updates in Palliative Care 2023

May 4-6, 2023 • Dana Point, CA  
\$895+ + lodging

16+ CME credit hours available to MD, NP, PA-C

Register [here](#).

### **VITAS Healthcare**

Webinar (Zoom)  
Advanced Cancer and End of Life

May 10, 2023 • 1:00 – 2:00 pm EST

CE/CME credit hour available in certain states.

Register [here](#).

### **University of Alabama at Birmingham Center for Palliative and Supportive Care (Moneka Thompson oversees this training.)**

In-Person or Webinar  
3-hour skills-based communication training that  
incorporates videos created by the African  
American community to elicit empathy and shed  
light on biases in clinical care.

Spring 2023 • 3 Hours

Learn more [here](#).

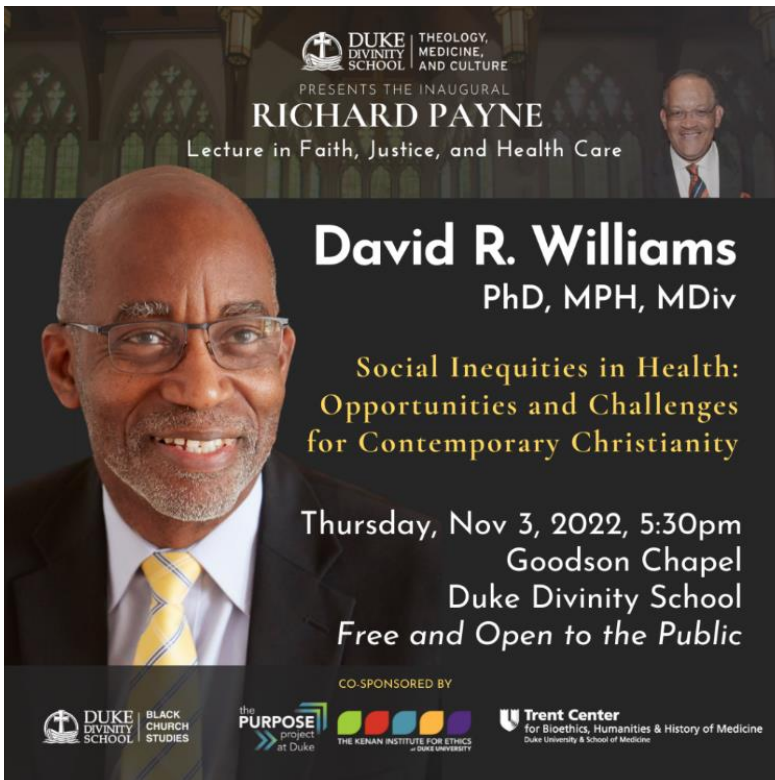
## NETWORK HIGHLIGHTS

The Inaugural [Richard Payne](#) Award and [Lecture](#) in Faith, Justice, and Health Care held at Duke Divinity School in Durham, NC, was an inspiring event, well-attended by Network members, the community, and the Payne family and friends. Opening with forewords from Dr. Warren Kinghorn and Provost Sally Korth, the

lecture segued into a thoughtful video of the late Dr. Payne sharing his passion for and commitment to end of life work. His impact was tangible in the testimonies shared by colleagues and friends, who propel forward his legacy to ensure the underserved are never forgotten in the health landscape.

Award recipient and keynote speaker, [David R. Williams](#), PhD, MDiv, MPH, MA, captivated the ears in Goodson Chapel and took the audience on an hour-long journey on the roots of health inequities in the U.S. and the association between religious involvement and health. With each new slide, camera phones raised quickly to snap the image, chart, or graph, to reflect on what was shared. At the end, we breathlessly applauded his flawless presentation, excited about the work that lies ahead.

To view Dr. Williams' highly engaging lecture, click [here](#). The lecture begins at 20:00.



The Center for the Advancement of Palliative Care ([CAPC](#)) conducted a yearlong study on health equity for Black patients in 2022. Several Network members served on this Advisory Board, along with 12 other leaders from across the country. Please say a special thank you to:

Cynthia Carter-Perrilliat, MPA  
Karen Bullock, PhD, MSW  
Kimberly Johnson, MD  
Marisette Hasan, BSN, RN



The Advisory Board studied the innovative practices of over 150 Palliative Care entities and organizations from across the country. 25 were selected as impactful, for purposes of replication. 11 finalist organizations were chosen as innovative leaders and these organizations will be posted on CAPC's developing Innovative Hub link.

Two Network members' organizations were selected as future features:

Cynthia Carter-Perrilliat, MPA  
Ronit Elk, PhD

AC CARE Alliance  
University of Alabama at Birmingham

Oakland, CA  
Birmingham, AL

Please send a special congratulations to both!



## ARTICLES SHARED THIS QUARTER

(SHARED BY...)

AMEN in Challenging Conversations: Bridging the Gaps Between Faith, Hope, and Medicine (Thompson)

[\(link\)](#)

Culture and Palliative Care: Preferences, Communication, Meaning, and Mutual Decision Making (Elk, Thompson)

[\(link\)](#)

Engaging Social Justice Methods to Create Palliative Care Programs that Reflect the Cultural Values of African American Patients with Serious Illness and Their Families: A Path Towards Health Equity (Elk)

[\(link\)](#)

Respecting Faith, Hope, and Miracles in African American Christian Patients at End-of-Life: Moving from Labeling Goals of Care as “Aggressive” to Providing Equitable Goal-Concordant Care (Elk, Thompson, White-Hammond)

[\(link\)](#)

Spirituality in Serious Illness and Health (Elk)

[\(link\)](#)

## UPCOMING EVENTS

(MARK YOUR CALENDARS)

### **SPRING '23 NETWORK MEETING**

THURSDAY, 2/23

2:30 – 3:30 PM EST

(1-HOUR ZOOM MEETING)

(TENTATIVE)

### **SUMMER '23 NETWORK MEETING**

TUESDAY, 5/16

1:00 – 2:00 PM EST

(1-HOUR ZOOM MEETING)

IF YOU HAVE:

PUBLISHED AN ARTICLE,

RELEASED A BOOK,

GAVE AN INTERVIEW,

ACCEPTED AN AWARD

RECEIVED GRANT FUNDING,

CHANGED JOBS,

OR

HAVE AN EVENT TO SHARE,

PLEASE EMAIL DETAILS TO THE  
NETWORK ADMINISTRATOR AT:

[AA-ACP-PC-Network@div.duke.edu](mailto:AA-ACP-PC-Network@div.duke.edu)

## NEWSLETTERS

Triannual newsletters emailed in January, May, and September.