



**AAHVS 520S/ARTHIST 554S**

# ***Harlem Renaissance***

**October 16**

***Richard Bruce Nugent,  
Richmond Barthé &  
Archibald J. Motley, Jr.:  
Black Transgressions***

**Archibald J. Motley, Jr., *Kikuyu: God of Fire*,  
1927. Oil on canvas**



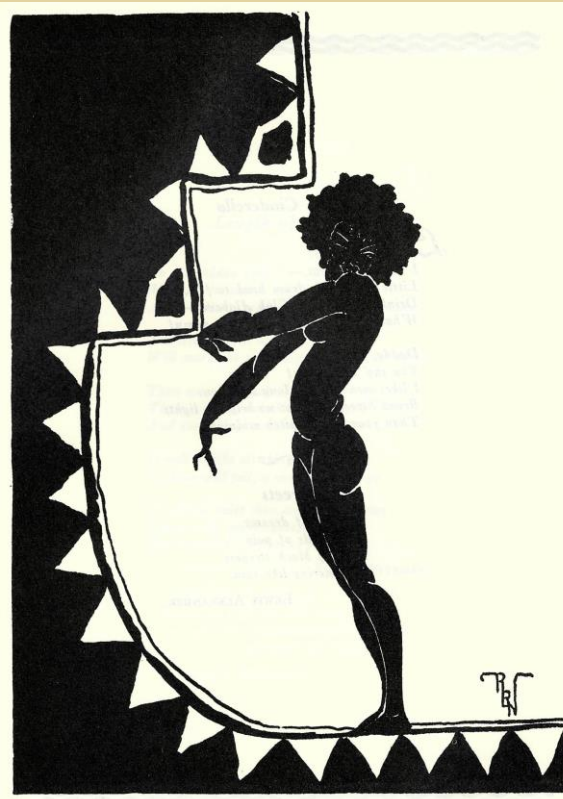
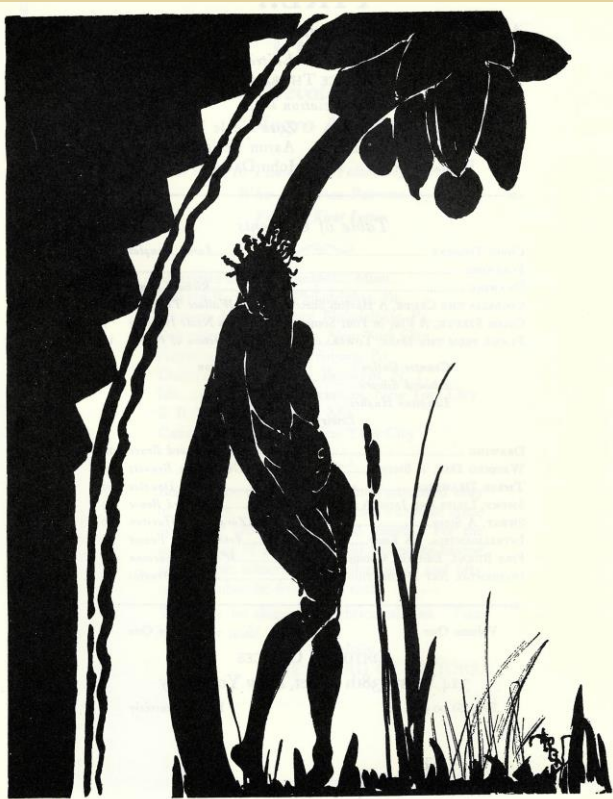


EXHIBIT WORK—Harlem Art Studio, 267 W. 136th St., New York, was the scene of a most interesting exhibit of sculptures and painting in which the work of 14 artists were represented. Standing, left to right: Leon Noyes, Thurman Wallace, Aaron Douglass and Richard Bruce. Seated: Effie Mason.

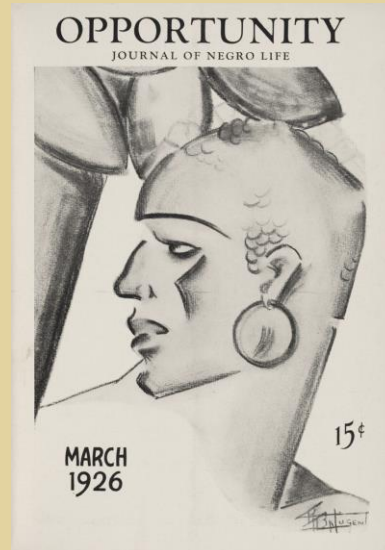
—Photo by Acme Studio, New York.

Left: Photo from *The Chicago Defender* featuring exhibiting artists at the Harlem Art Studio, 1927 (from left to right: Leon Noyes, Wallace Thurman, Effie Mason (seated), Aaron Douglas, & Richard Bruce Nugent).

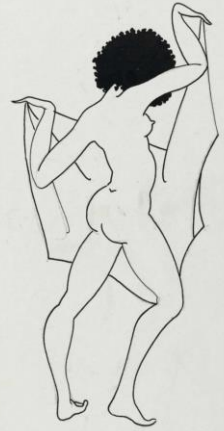
Above left & above center: Richard Bruce Nugent, *Dancing Figures*, 1925. Black ink and graphite on wove paper, 14 3/4 x 10 1/2 inches. Brooklyn Museum, New York, NY.

Above right: Richard Bruce Nugent, *Black Gum*. From *Opportunity* magazine, January 1928.

Right: Richard Bruce Nugent, Cover of *Opportunity* magazine, March 1926.



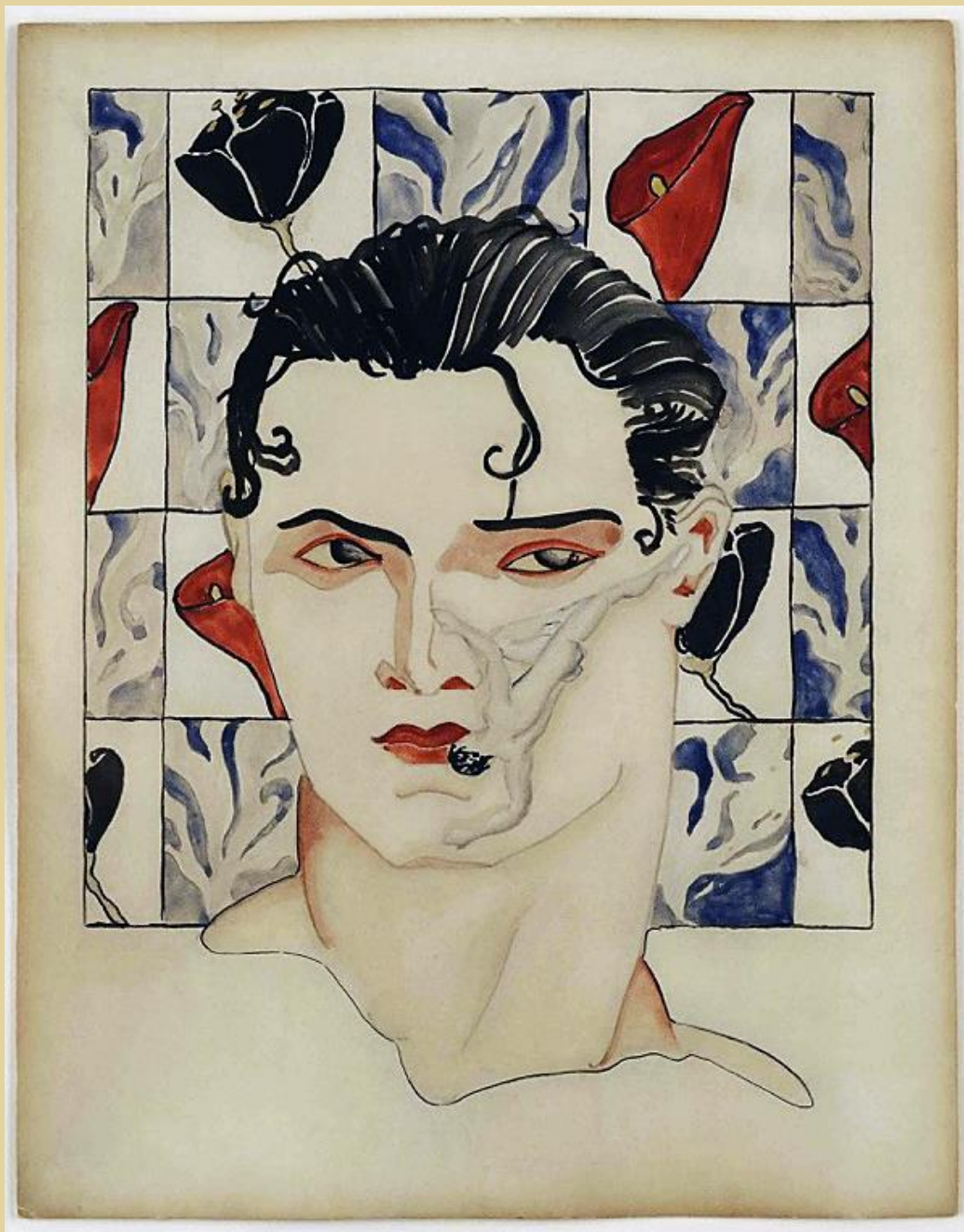




**Richard Bruce Nugent,**  
***Dancing Figures*, 1925.**  
Black ink and graphite on  
wove paper, 14 3/4 x 10  
1/2 inches. Brooklyn  
Museum, New York, NY.





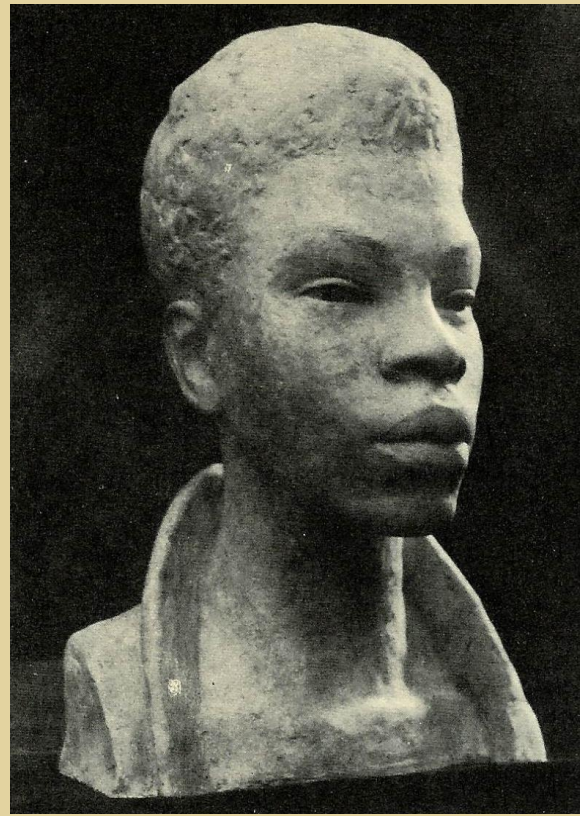


Richard Bruce Nugent,  
*Smoke, Lilies & Jade*,  
1925. Ink and watercolor  
on wove paper.

Richard Bruce Nugent,  
*Dancing Figures*, c. 1935.  
Black ink and graphite on  
wove paper.







Clockwise from lower left"

Photo of Richmond Barthé with his bust of  
Toussaint L'Ouverture, 1928. Plaster

Richmond Barthé, *The Breakaway*, 1929.  
Plaster.

Richmond Barthé, *West Indian Girl*, 1930.  
Plaster.

Richmond Barthé, *Blackberry Woman*, 1930.  
Bronze.





Left: Richmond Barthé, *African Dancer*, 1933. Plaster.

Right: Richmond Barthé, *Feral Benga*, 1935. Bronze.







Left: Richmond Barthé, *Stevedore*, 1937. Bronze.

Above: Richmond Barthé, *The Mother*, 1934. Plaster.





Left & detail right: Richmond Barthé Barthe, *Green Pastures: The Walls of Jericho*, 1937-38. Relief marble murals, formerly at the Harlem River Housing Projects, presently at Kingsborough Houses, Brooklyn, NY.





Left: Photograph of Archibald J. Motley, Jr. and his mother.



Center: Archibald J. Motley, Jr., *Portrait of My Mother*, 1919. Oil on canvas.



Right: Archibald J. Motley, Jr., *Portrait of a Woman on a Wicker Settee*, 1931. Oil on canvas.





Left: Archibald J. Motley, Jr., *Mulatress with Figurine and Dutch Landscape*, 1920. Oil on canvas.



Center: Archibald J. Motley, Jr., *Octoroon*, 1922. Oil on canvas.



Right: Archibald J. Motley, Jr., *The Octoroon Girl*, 1925. Oil on canvas.



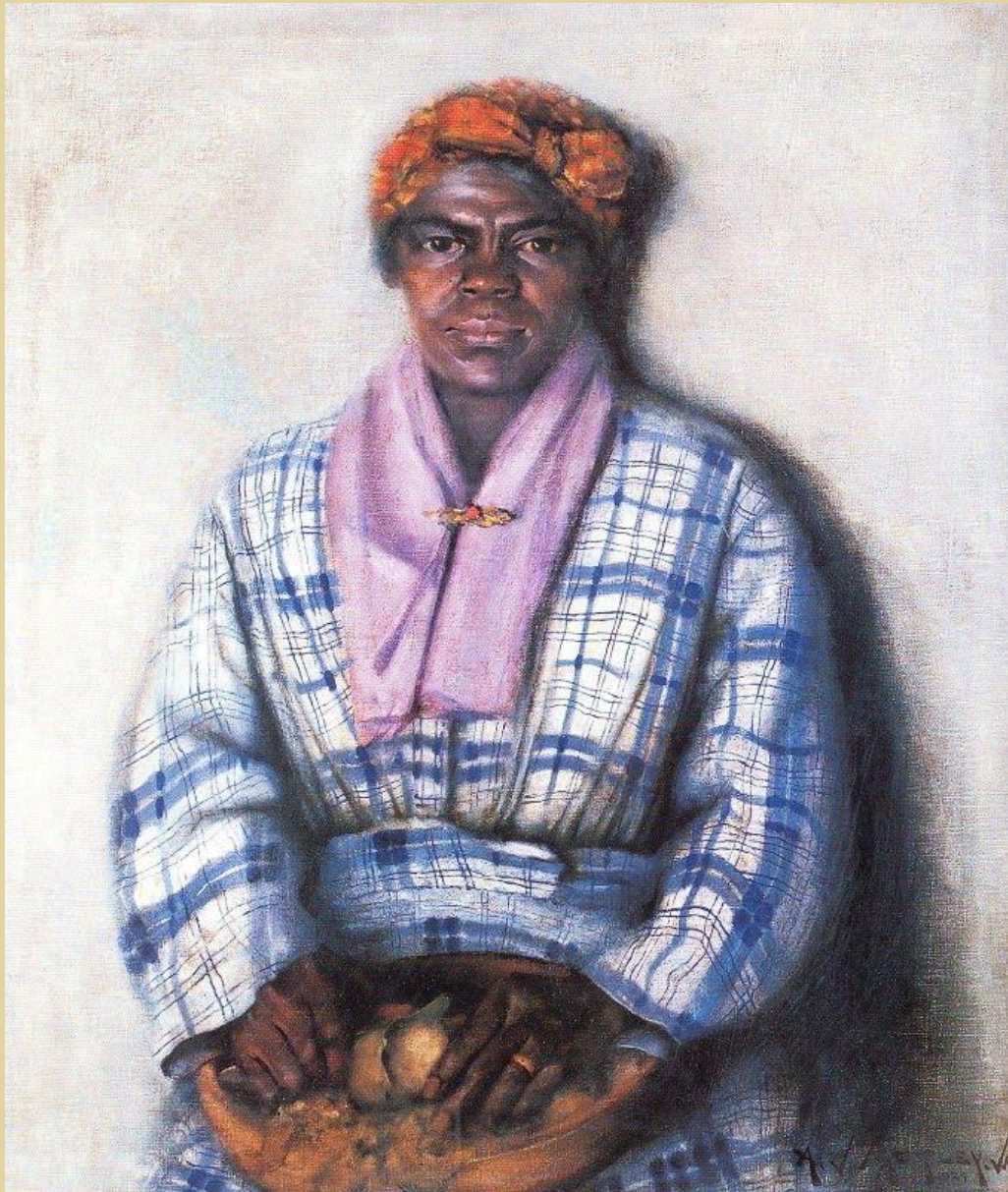


Left: Archibald J. Motley, Jr., *Portrait of My Grandmother*, 1922. Oil on canvas.

Right: Archibald J. Motley, Jr., *Mending Socks*, 1924. Oil on canvas.

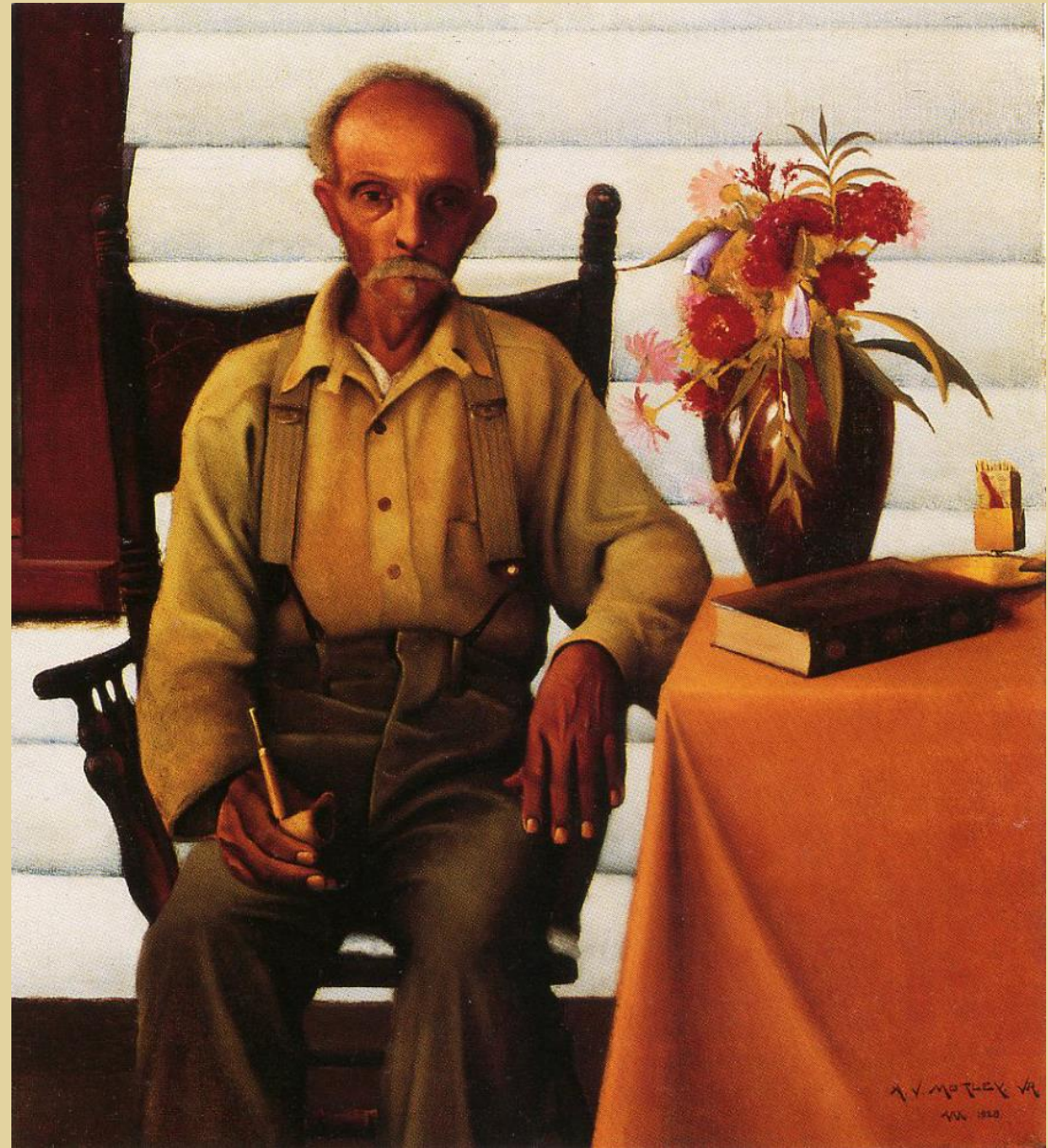






Archibald J. Motley, Jr., *Woman Peeling Apples (Mammy) (Nancy)*, 1924. Oil on canvas.

Archibald J. Motley, Jr., *Uncle Bob*, 1928. Oil on canvas.







Left: Archibald J. Motley, Jr., *Reception (Afternoon Tea)*, 1926. Oil on canvas.



Right: Archibald J. Motley, Jr., *Cocktails*, 1926. Oil on canvas.





Left: Archibald J. Motley, Jr., *Stomp*, 1927. Oil on canvas.



Right: Archibald J. Motley, Jr., *Tongues (Holy Rollers)*, 1929. Oil on canvas.

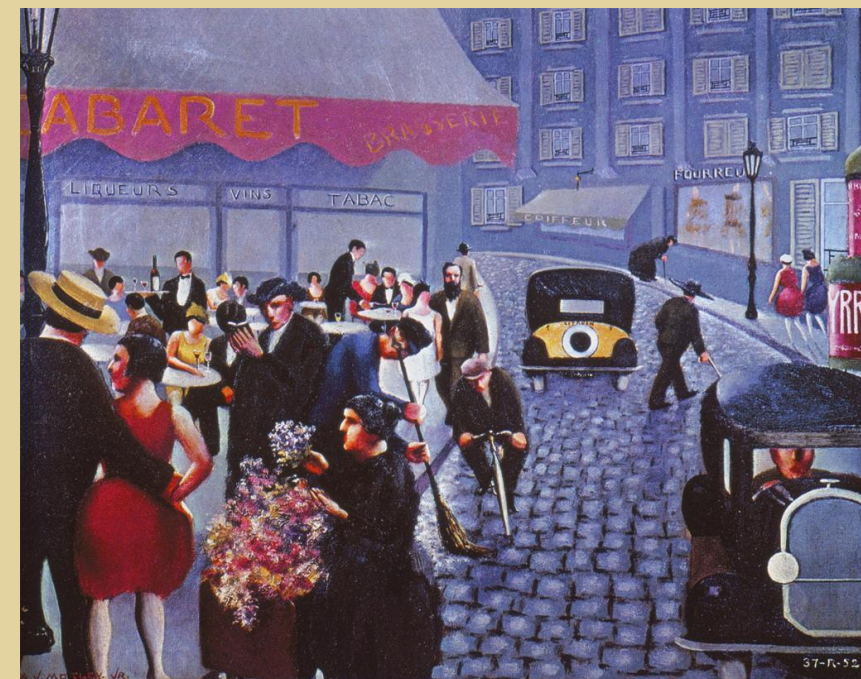




Above: Archibald J. Motley, Jr., *Jockey Club*, 1929. Oil on canvas.



Upper right: Archibald J. Motley, Jr., *Café, Paris*, 1929. Oil on canvas.



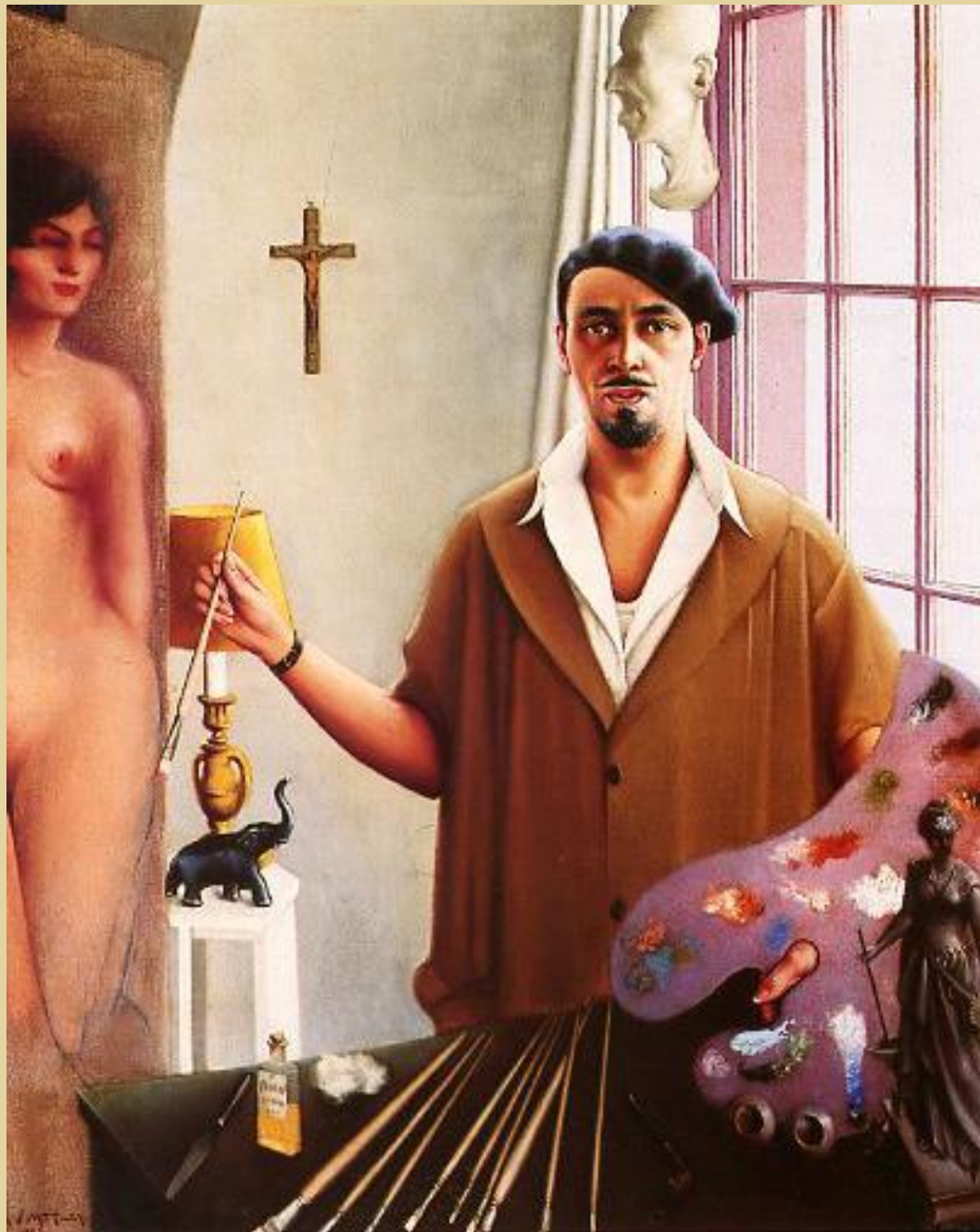
Lower right: Archibald J. Motley, Jr., *Dans la Rue, Paris*, 1929. Oil on canvas.





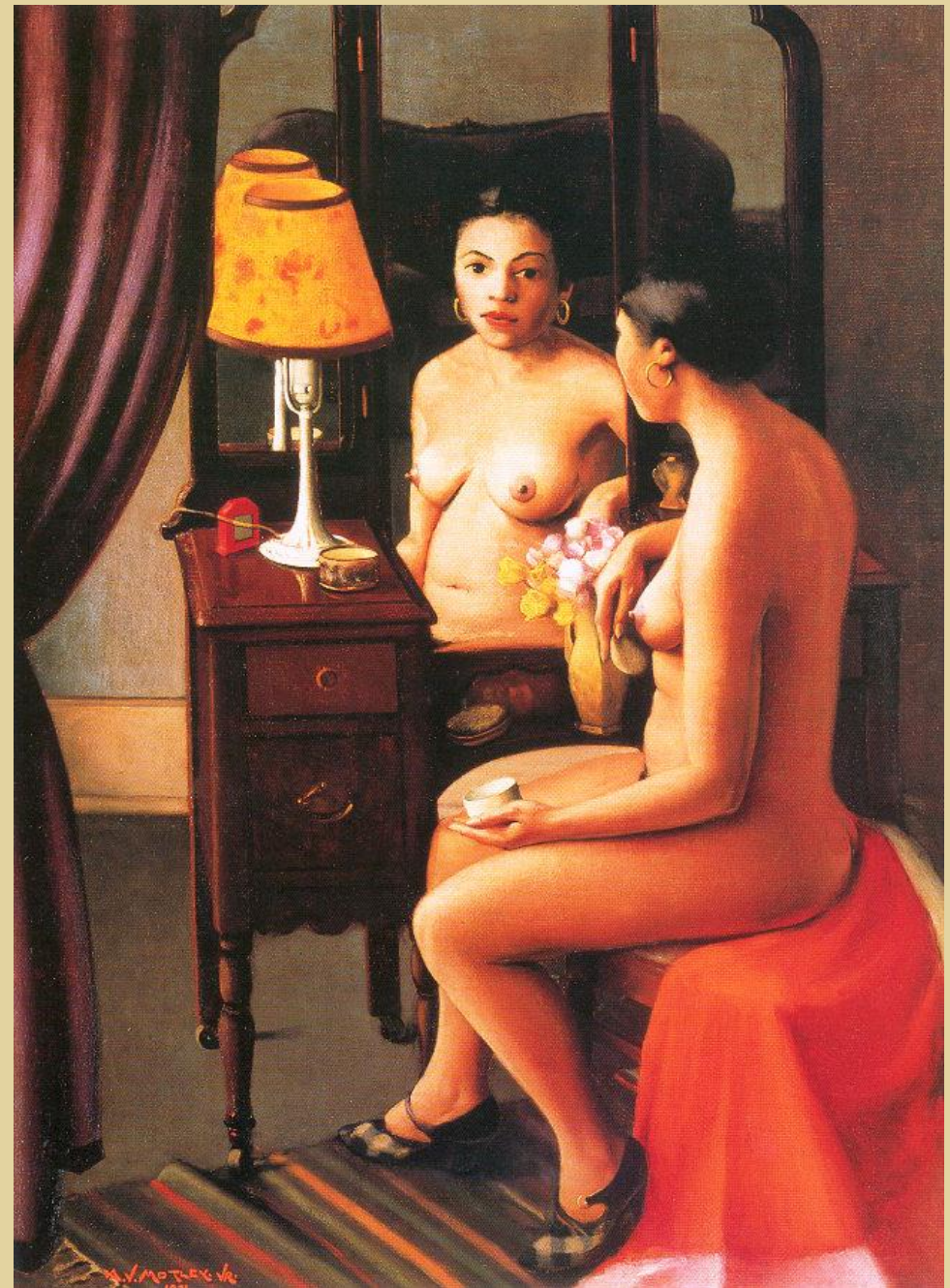
Archibald J. Motley, Jr., *Blues*, 1929. Oil on canvas.





Archibald J. Motley, Jr.,  
*Self Portrait (Myself at Work)*, 1933. Oil on  
canvas.

Archibald J. Motley, Jr.,  
*Brown Girl After the Bath*, 1931. Oil on  
canvas.





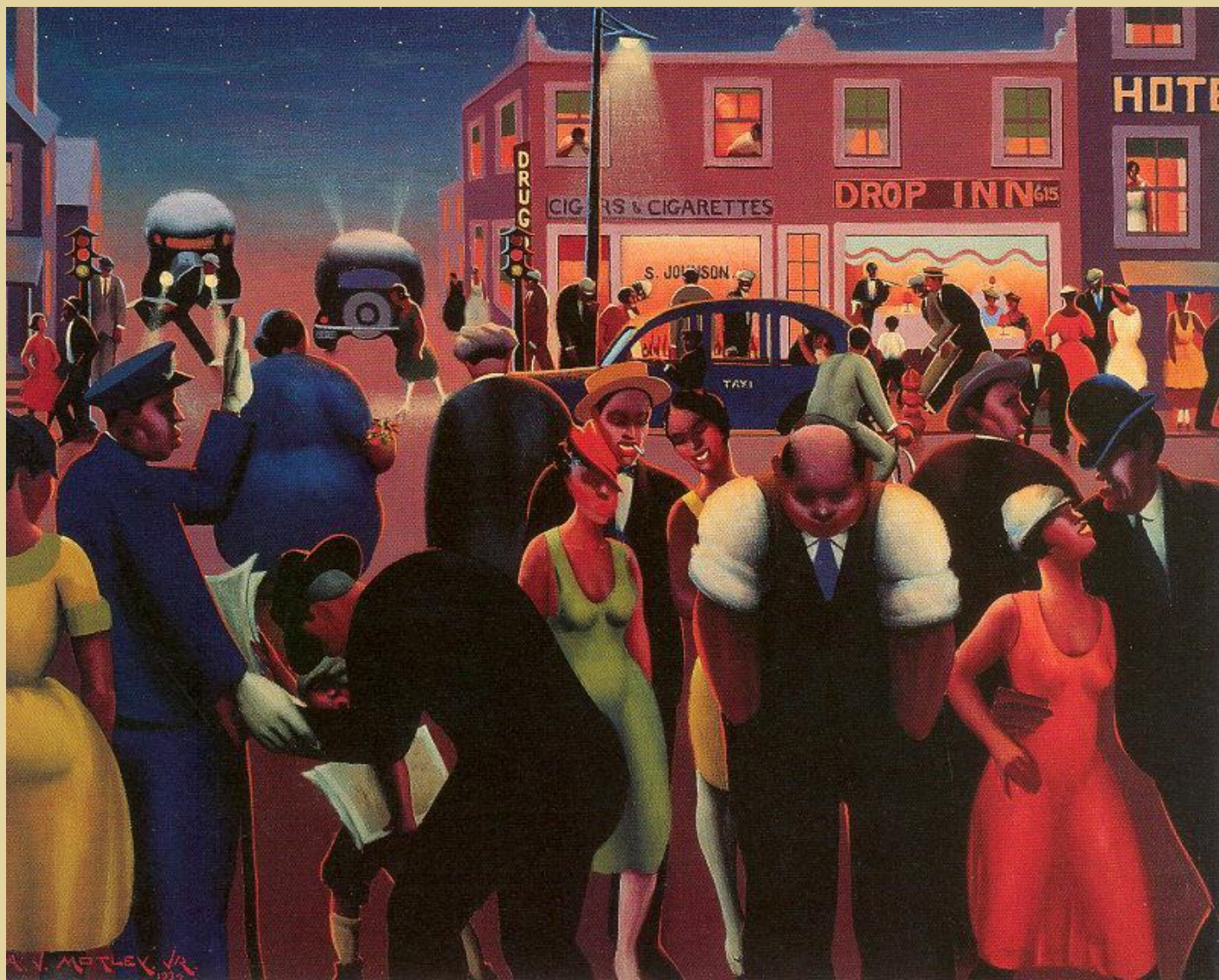


Archibald J. Motley, Jr., *The Plotters*, 1933. Oil on canvas.



Archibald J. Motley, Jr., *The Liar*, 1936. Oil on canvas.





Archibald J. Motley, Jr., *Black Belt*, 1934. Oil on canvas.





Archibald J. Motley, Jr., *Barbecue*, c. 1934. Oil on canvas.



Archibald J. Motley, Jr., *Saturday Night*, 1935. Oil on canvas.



Archibald J. Motley, Jr., *The Picnic*, 1936. Oil on canvas.







Archibald J. Motley, Jr., *Saturday Night Street Scene*, 1936. Oil on canvas.



Archibald J. Motley, Jr., *Carnival*, 1937. Oil on canvas.





Archibald J. Motley, Jr., *Arrival at Chickasaw Bayou of the Slaves of President Davis*, c. 1938. Oil on board.





Archibald J. Motley, Jr., *The Argument*, 1940. Oil on canvas.

Archibald J. Motley, Jr., *Lawd, Mah Man's Leavin'*, 1940. Oil on canvas.