

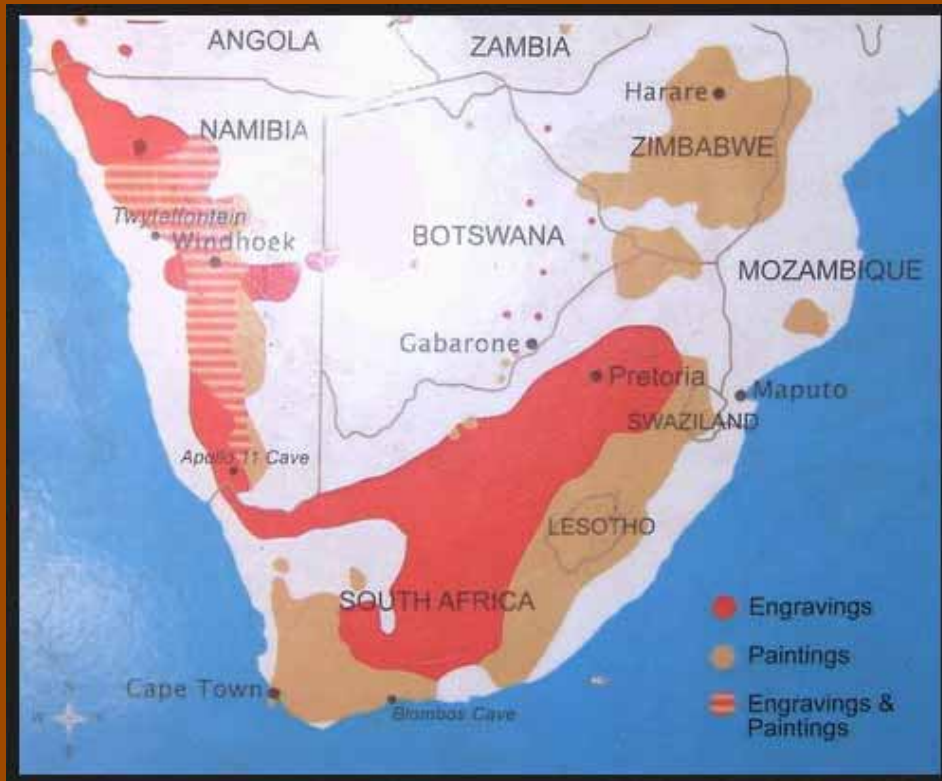
**ARTHIST 345-01/AAAS 348-01/ICS-223-01/AFRICAN ART:
*FROM ROYAL COURT TO CONTEMPORARY MARKETPLACE***

South African Peoples

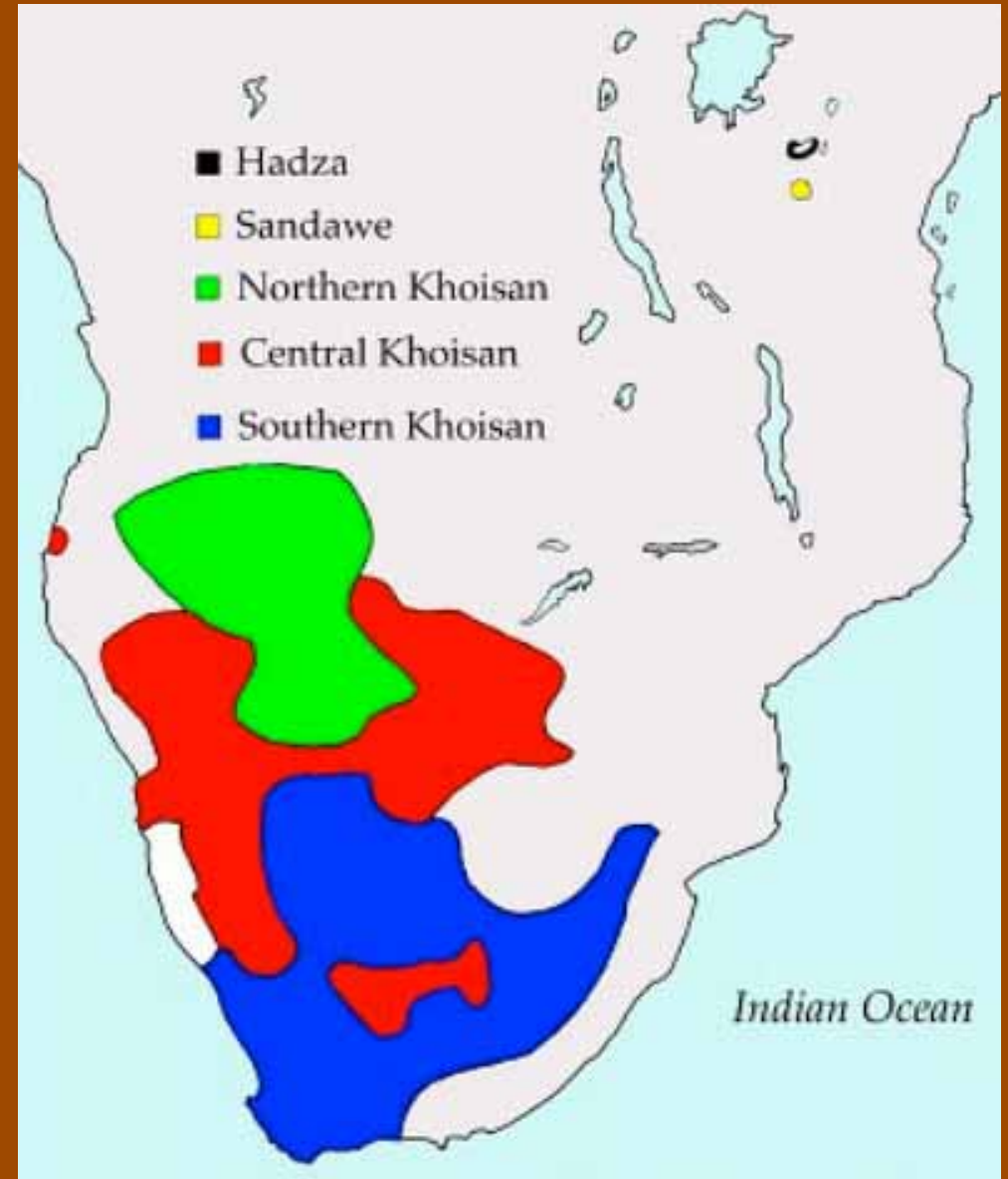
Tuesday, October 12:

Fragment of a platter with animal imagery, Great Zimbabwe, 1100-1500 CE. Stone.





Above: Map showing the various sites where prehistoric rock paintings and engravings have been located in Southern Africa.
 Right: Map showing the locations for Southern Africa's indigenous populations (generically referred to as the San peoples).





Above left: San culture, Rock engraving, Namibia, circa 2600 BCE. Below left: San culture, Rock painting, South Africa, circa 150 CE.





San culture, Rock painting, Zimbabwe, circa 500 CE.

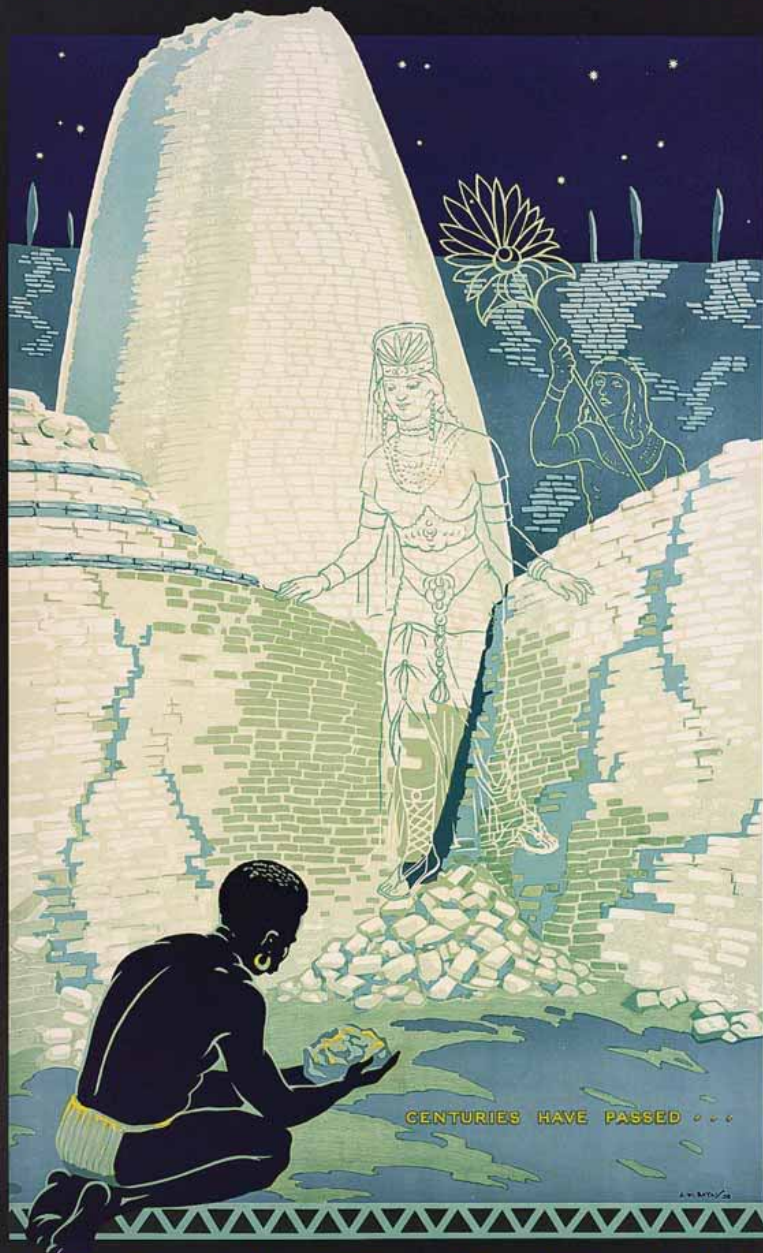


Augustin François Lemaître, Left: *Portrait of Chaasi, Bachapin & weapons, Southern Africa, 1839. Engraving.* Center: *San or Bushman playing gorah (a musical bow), Southern Africa, 1839. Engraving.* Right: *San or Bushman chief, Southern Africa, 1839. Engraving.*

Iron Age culture, Head, Lydenburg, South Africa, circa 6th – 10th centuries CE. Terra cotta.



THE RIDDLE OF RHODESIA



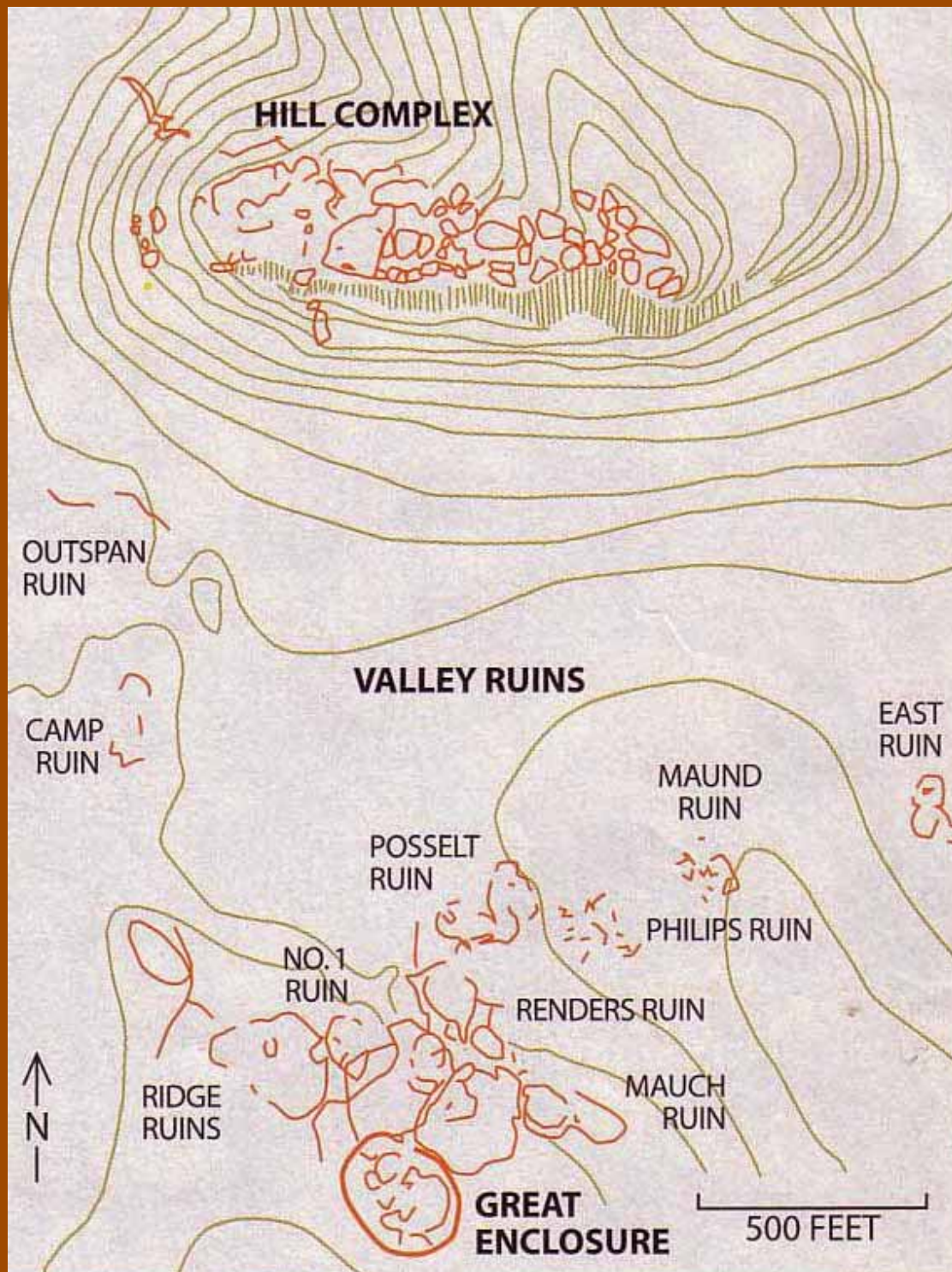
ZIMBABWE

FOR INFORMATION APPLY:-
TO THE DIRECTOR OF PUBLICITY, P.O. BOX 1187, SALISBURY- THE SOUTHERN RHODESIA PUBLICITY OFFICE, P.O. BOX 4586, JOHANNESBURG-
AND TO THE SECRETARY, PUBLICITY ASSOCIATION, P.O. BOX 54, FORT VICTORIA.

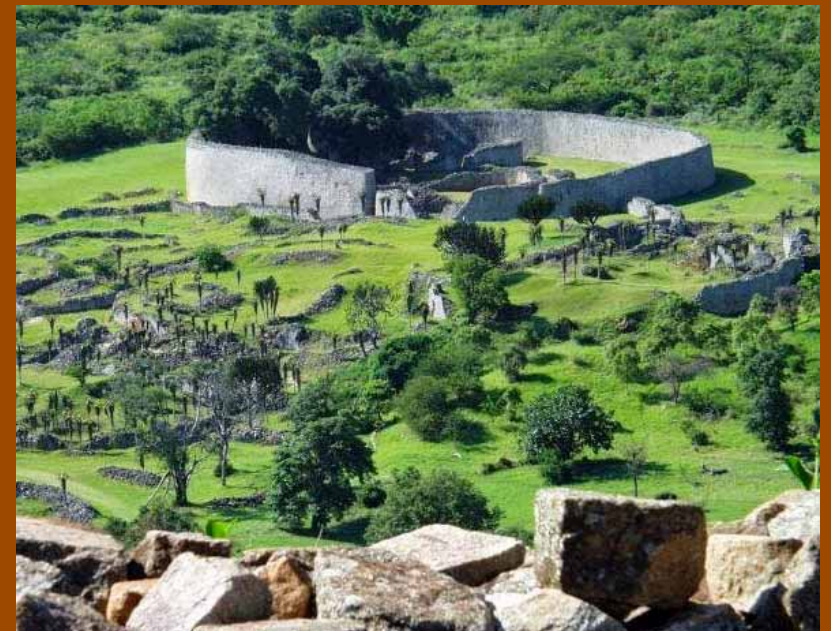
Map 6 The South African interior

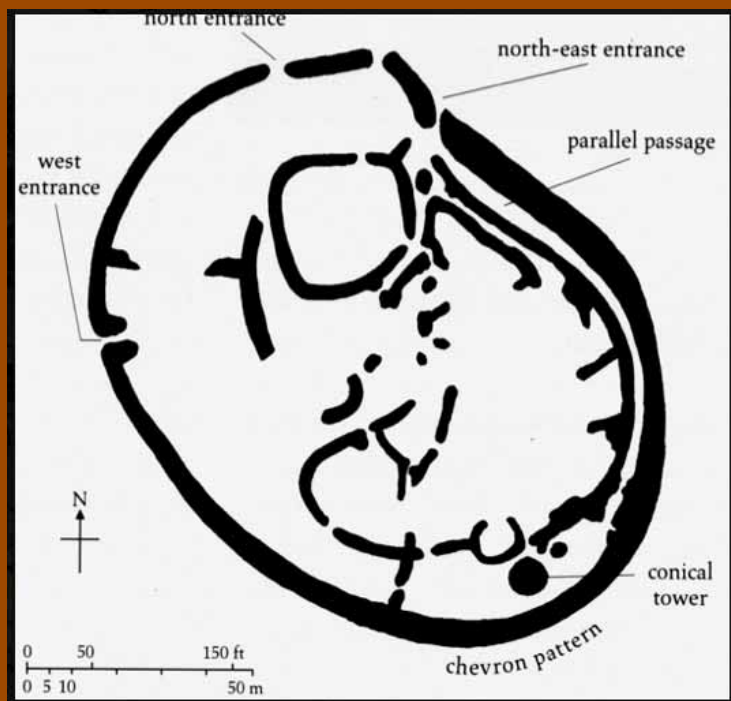


Right: “The Riddle of Rhodesia/Zimbabwe” travel poster, 1938.
Above: Map showing the kingdoms, communities, and sites for major stone masonry structures located in Southeastern Africa, 800 – 1700 CE.

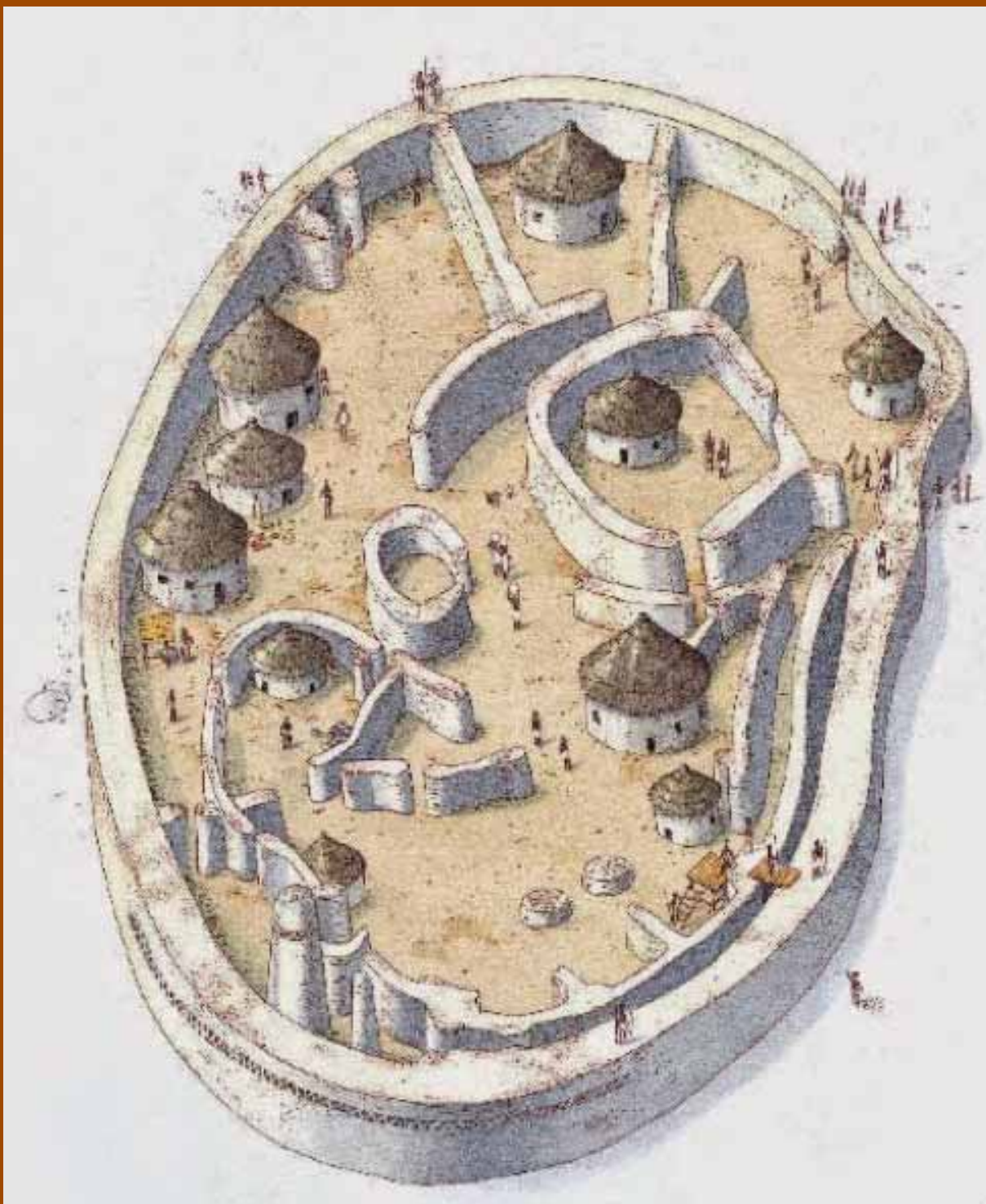


Left: Plan of the stone enclosures at Great Zimbabwe, Zimbabwe, 1100 – 1500 CE. Below: View of the Great Enclosure from the Ruins, Great Zimbabwe, Zimbabwe, 1100 – 1500 CE.





Above: Aerial plan of the Great Enclosures at Great Zimbabwe, Zimbabwe, 1100 – 1500 CE.
 Right: Aerial rendering of the Great Enclosure as an inhabited site, Great Zimbabwe, Zimbabwe, 1100 – 1500 CE.





Interior of the Great Enclosure looking SE toward the Conical Tower, Great Zimbabwe, Zimbabwe, 1100 – 1500 CE.



Left and Below: Interior of the Great Enclosure showing stone masonry corridors, Great Zimbabwe, Zimbabwe, 1100 – 1500 CE.





Interior of the Great Enclosure showing the massive depth of the walls, Great Zimbabwe, Zimbabwe, 1100 – 1500 CE.



Left and Right: Bird sculptures from the stone enclosures at Great Zimbabwe, Zimbabwe, 1100 – 1500 CE. Soapstone.



Above right: Naletale Ruins, showing ironstone-colored and chevron-, herringbone-, checkerboard-, and cord-laid stone masonry, Naletale, Zimbabwe, circa 1700 CE. Below right: Outer wall of the Great Enclosure, showing chevron-laid stone masonry, Great Zimbabwe, Zimbabwe, 1100 – 1500 CE.





Left: Photo of Esther Mahlangu (Ndebele, South Africa) in front of a house whose abstracted patterns she designed and painted. Right: Tsonga peoples, South Africa, Male figure, late 19th century. Wood.