

ARTHIST 345-01/AAAS 348-01/AFRICAN ART:  
FROM ROYAL COURT TO CONTEMPORARY MARKETPLACE

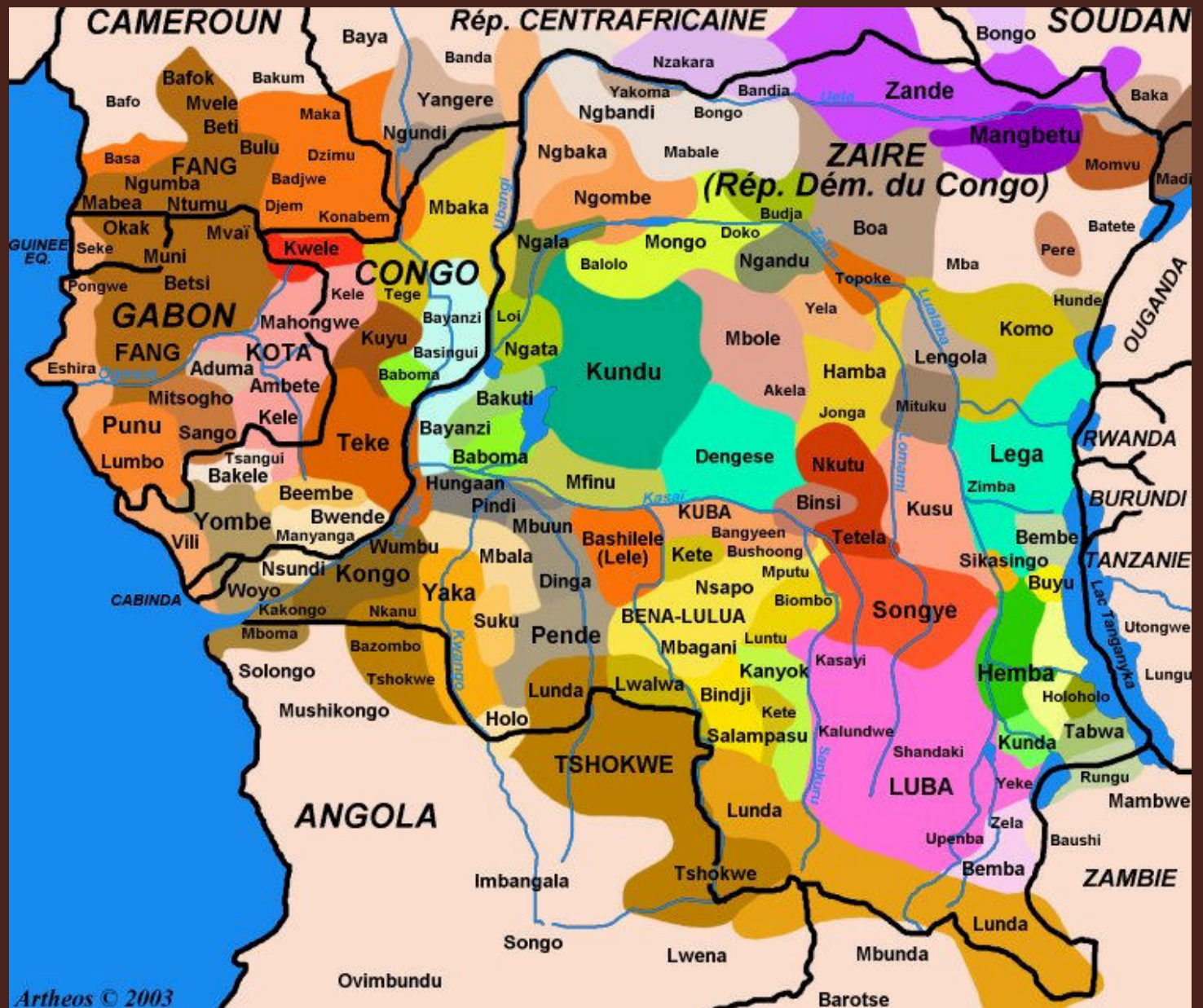
## *Kuba Kingdom (Luba)*



Wednesday, April 5

*Man Ray, Meret Oppenheim, Alice Rahon & Consuelo de Saint-Exupery wearing  
Hats from the Kuba Kingdom (Democratic Republic of Congo), 1937. Photographs.*

Map of ethic groups  
in West Central  
Africa







Kuba Kingdom (Democratic Republic of Congo), *Wrought iron figure*, 16<sup>th</sup> century. Iron.



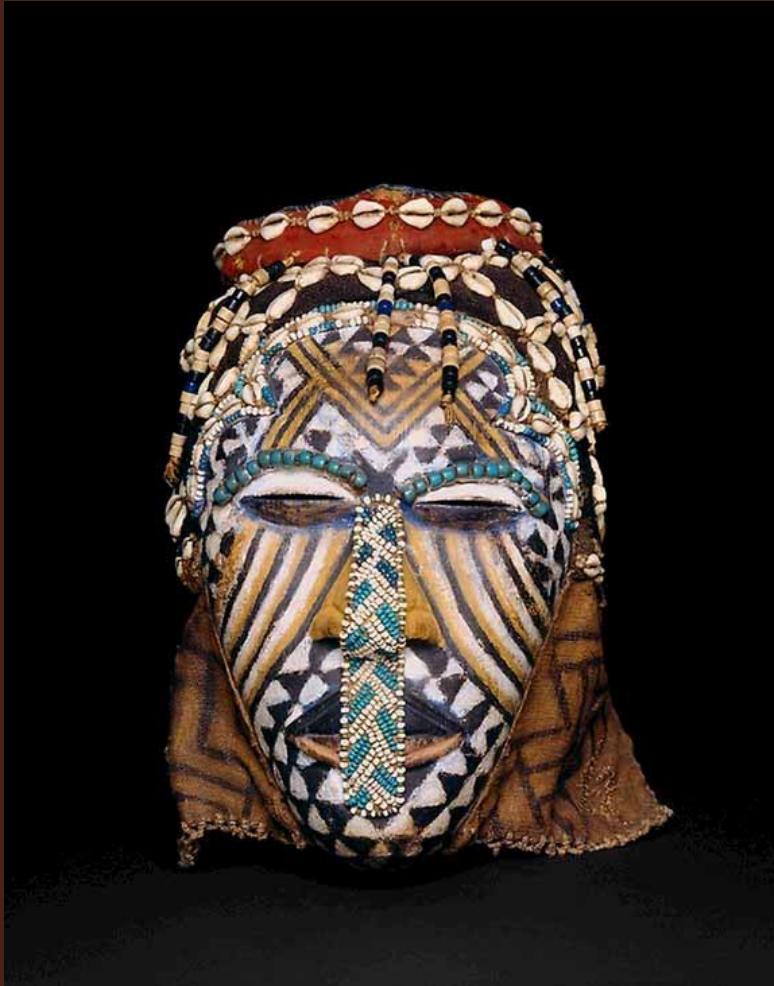
Above: Kuba Kingdom ruler (Nyim) Mbop Mabiinc maKyen (ruled 1939-1969). Right: Kuba Kingdom ruler (Nyim) Kot a MbWeekly III (ruled 1969-the present). Photographs by Eliot Elisofon.





Kuba-Bushoong Kingdom (Democratic Republic of Congo), *Royal portrait figure (ndop)*, late 18<sup>th</sup> century. Wood.





Clockwise from above: Kuba kingdom (Democratic Republic of Congo), *Female mask (Ngady aMwaash)*, 19<sup>th</sup> century. Wood, pigments, beads, cowrie shells & fiber. Kuba kingdom (Democratic Republic of Congo), *Royal mask (Mbwoom)*, late 19<sup>th</sup> – early 20<sup>th</sup> century. Wood, shells, beads. Kuba kingdom (Democratic Republic of Congo), *Royal Elephant mask (Mwaash aMbooy)*, 20<sup>th</sup> century. Mixed media.





Above: Kuba kingdom (Democratic Republic of Congo), *Anthropomorphic cup*, 20<sup>th</sup> century. Wood. Upper right: Kuba kingdom (Democratic Republic of Congo), Textile showing the "woot" motif, 20<sup>th</sup> century. Raffia. Lower right: Kuba kingdom (Democratic Republic of Congo), *Friction oracle (itombwa)*, 20<sup>th</sup> century. Wood, fiber.



Clockwise from above right:  
 Ngombe peoples (Democratic Republic of Congo), *Reclining chair*, early 20<sup>th</sup> century. Wood, brass tacks. Pierre Legrain, *Study for a stool*, 1920. Watercolor on paper. Pende peoples (Democratic Republic of Congo), *Hat*, early 20<sup>th</sup> century. Twine, cowrie shells. Man Ray, *Mode au Congo*, 1937. Gelatin silver print.

