

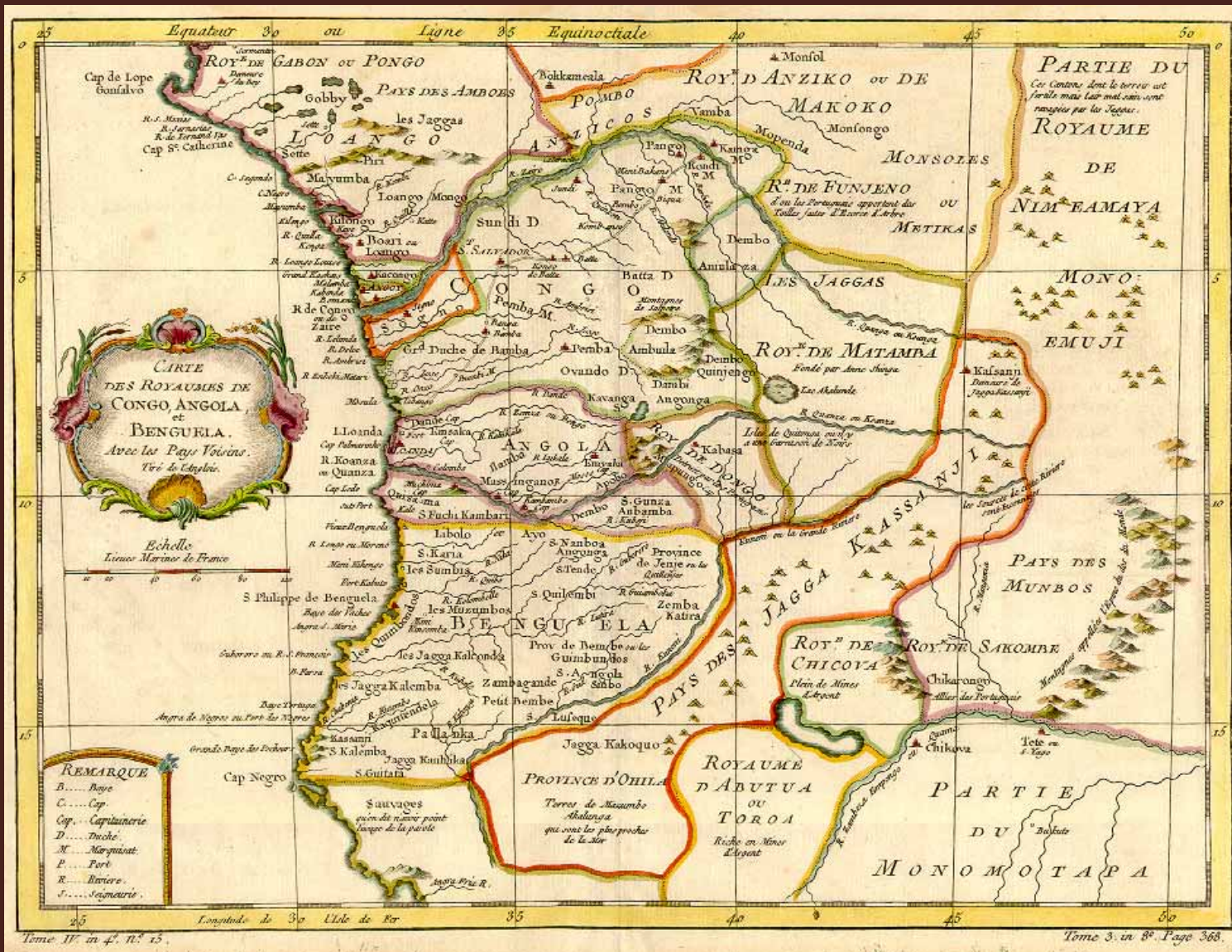
ARTHIST 345-01/AAAS 348-01/AFRICAN ART: FROM ROYAL COURT TO CONTEMPORARY MARKETPLACE

# *Kongo Civilization*

Monday, April 3

Left: Kongo Kingdom (Democratic Republic of Congo), *Staff finial, kneeling figure with feline head*, 19<sup>th</sup> century. Ivory, stone.

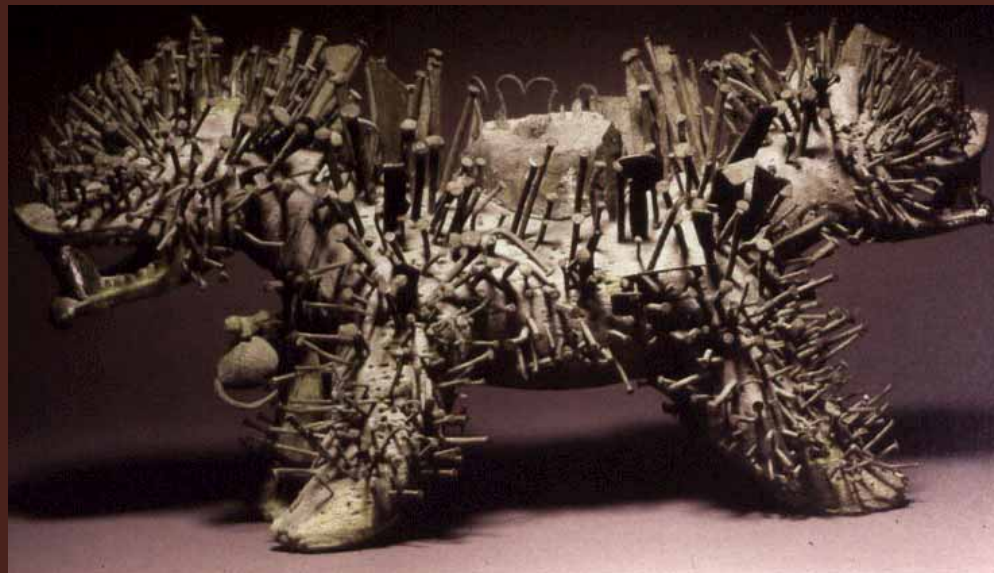




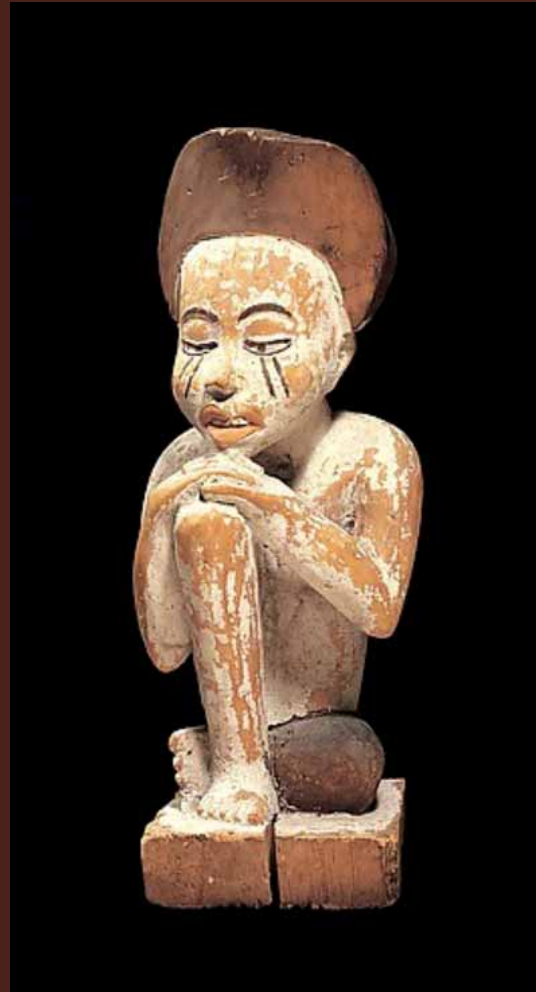
Map of the Kongo Kingdom



Left: Kongo Kingdom (Democratic Republic of Congo), detail, *Oliphant (trumpet)*, 16<sup>th</sup> century. Ivory. Right: Jaspas Beckx, *Pedro Sunda, servant to Dom Miguel de Castro*, c. 1640. Oil on canvas.



Left: Yombe peoples (Democratic Republic of Congo), *Power figure (nkisi nkondi)*, 1905. Wood, metal, glass, & mixed media. Above: Vili peoples (Angola/Democratic Republic of Congo), *Double-headed power figure of dog (nkondi)*, before 1912. Wood, iron & mixed media.



Left: Kongo Kingdom (Democratic Republic of Congo), *St. Anthony statue holding a shrine figure*, 19<sup>th</sup> century. Wood. Above center: Kongo Kingdom (Democratic Republic of Congo), *Ancestral shrine figure*, late 19<sup>th</sup> century-early 20<sup>th</sup> century. Wood, pigment. Above right: Kongo Kingdom (Democratic Republic of Congo), *Seated shrine figure*, 19<sup>th</sup> century. Wood, glass.



Above: Photograph of a Bwende funerary mannequin (*niombo*) during a public ceremony, early 20<sup>th</sup> century.  
Right: Bwende (Democratic Republic of Congo),  
*Funerary mannequin (niombo)*, early 20<sup>th</sup> century. Cloth,  
pigment, soil, human remains.

