

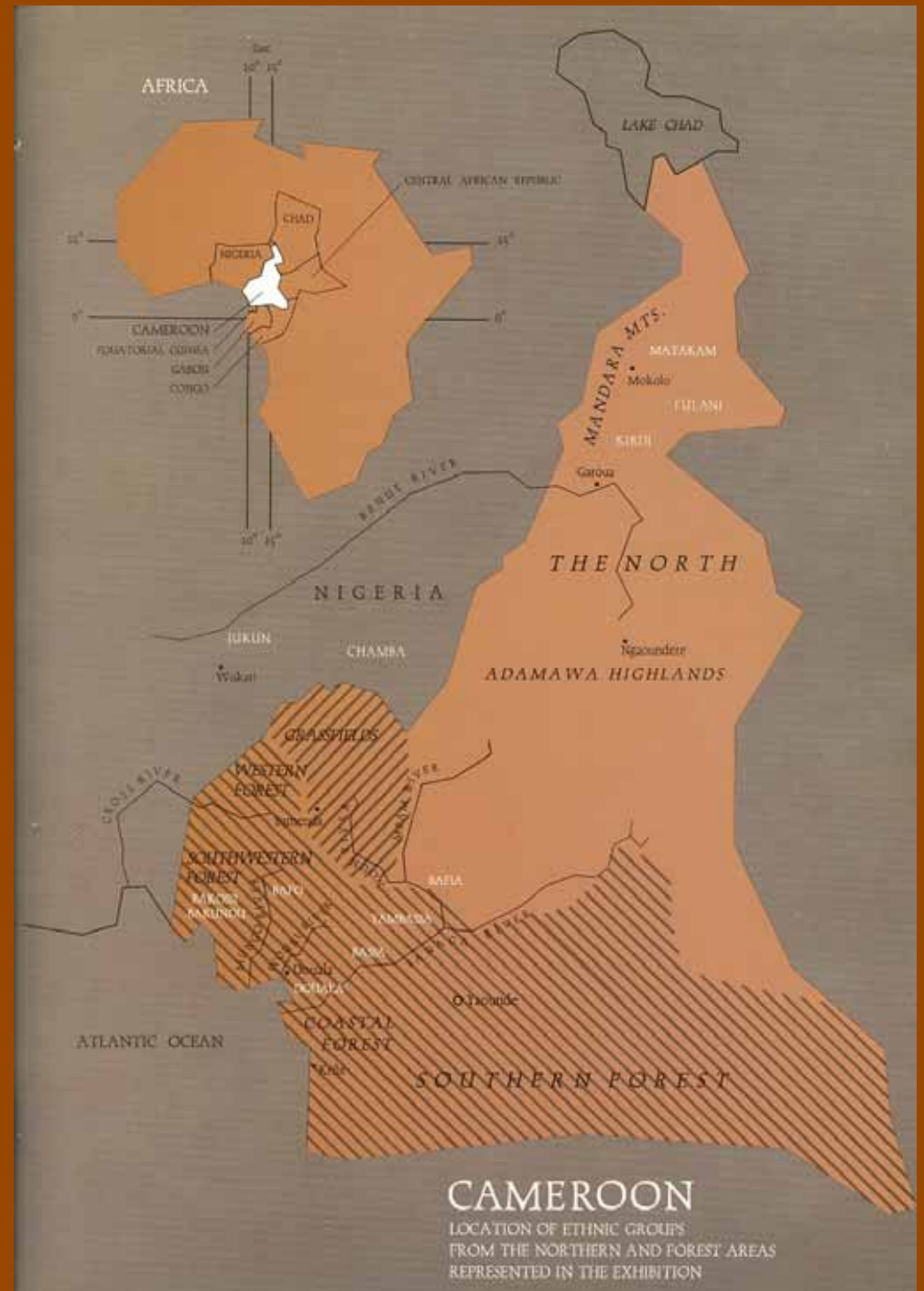
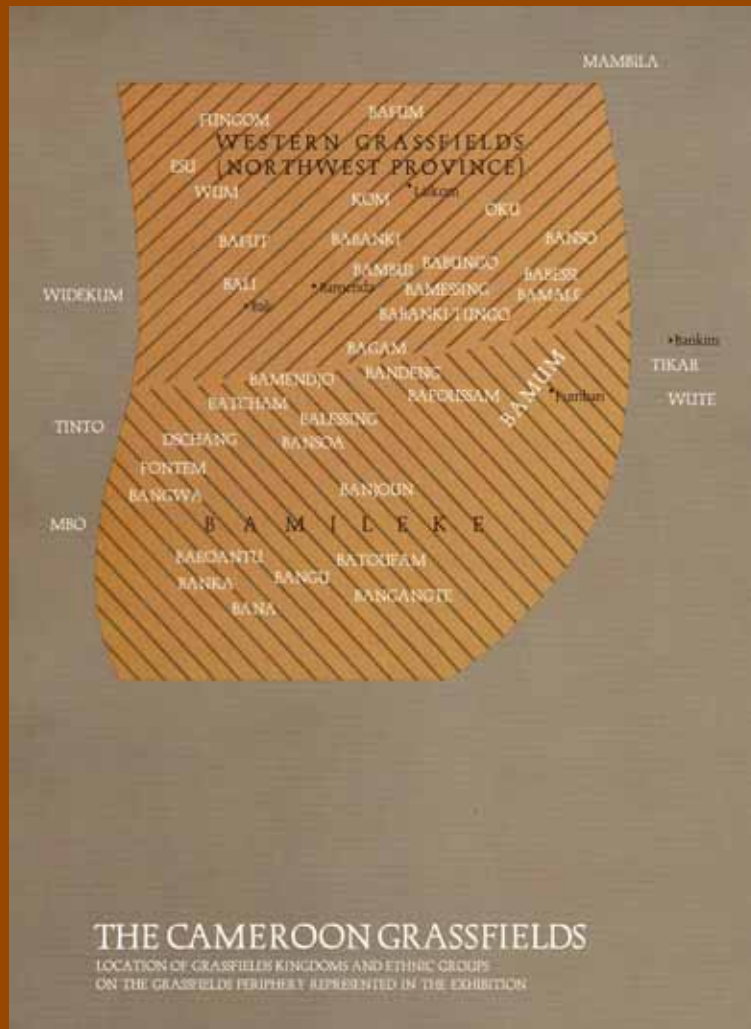
ARTHIST 345-01/AAAS 348-01/ICS 223-01/*AFRICAN ART: FROM ROYAL COURT TO CONTEMPORARY MARKETPLACE*

CAMEROON GRASSFIELDS CIVILIZATIONS I



Monday, March 20

Left: Bamum King Ibrahim Njoya receiving a visitor, Cameroon, c. 1914.

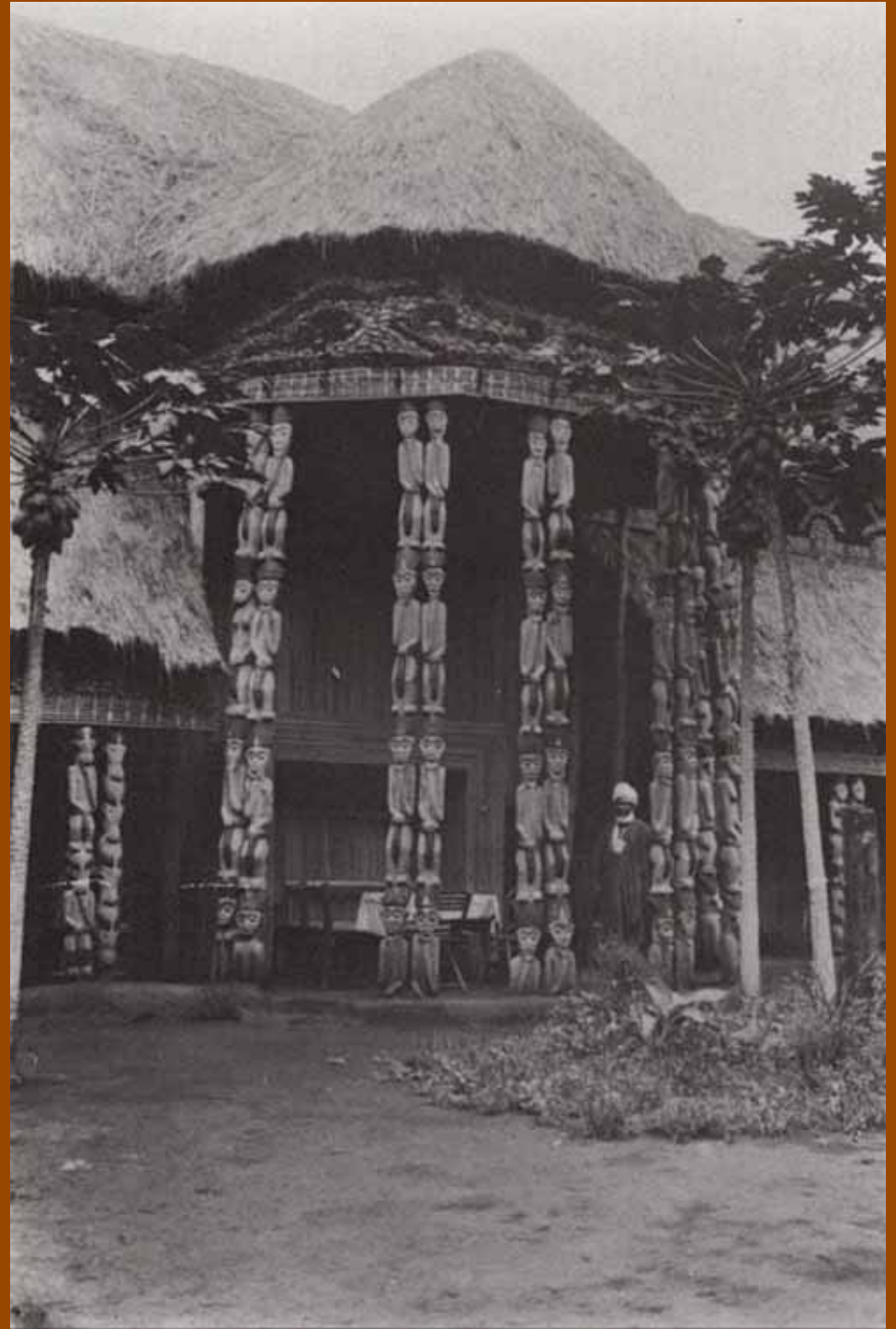


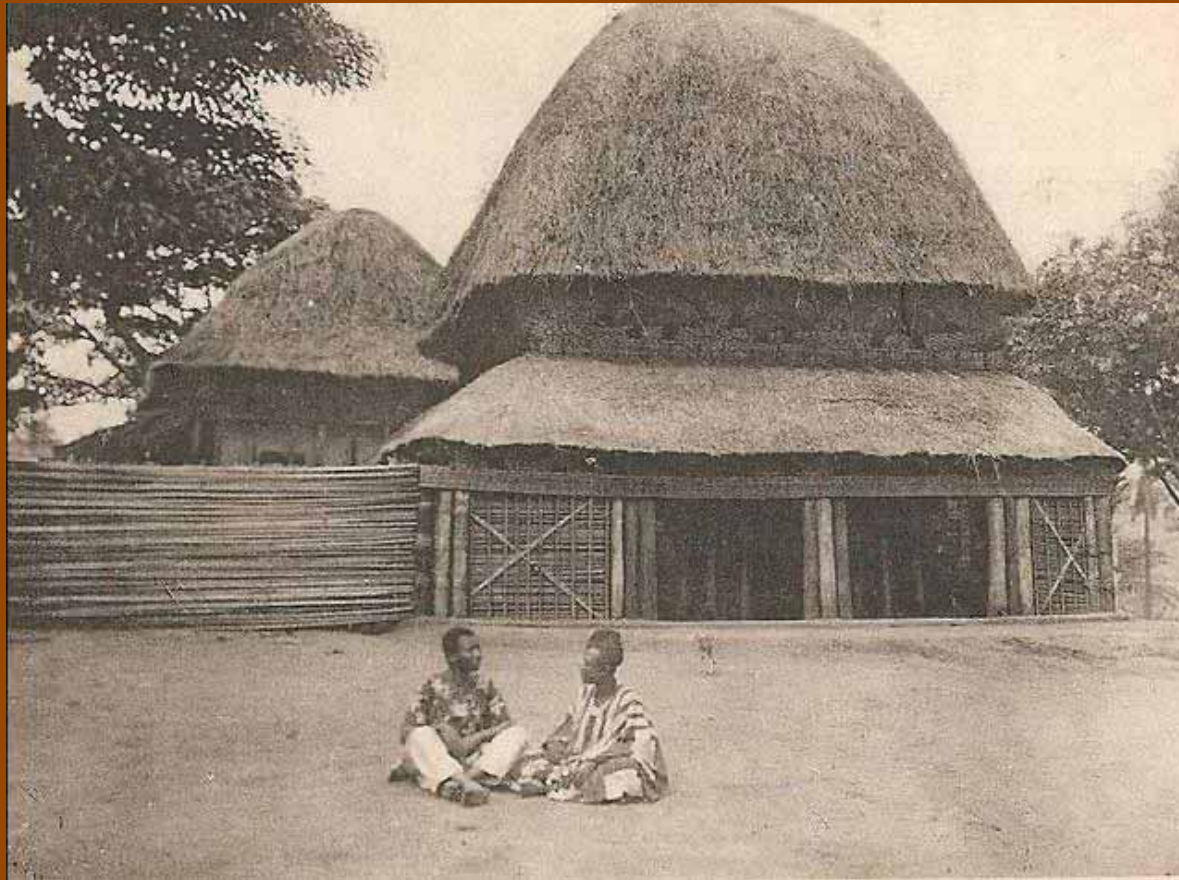
Above: Map of Cameroon Grasslands kingdoms & ethnic groups. Right: Cameroon & locations of cultural regions.

Upper right: Bamum King Ibrahim Njoya receiving a visitor, Cameroon, c. 1914. Lower right: Photograph of Bamum ruler, King Njoya, with soldiers holding *ndop* textile, Cameroon, 1908.

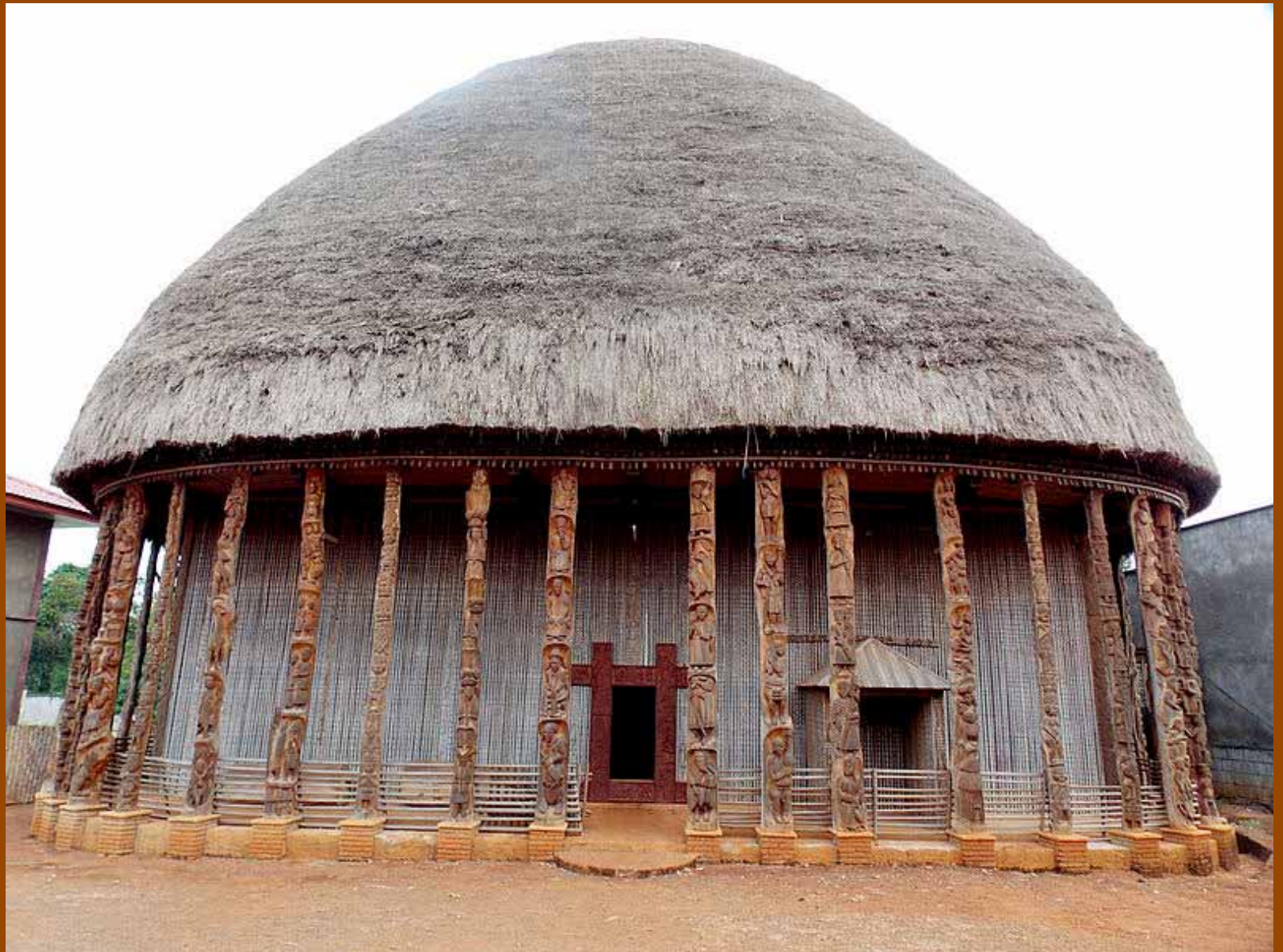


King Njoya in the inner courtyard of the Foumban Palace, Bamum, Cameroon, 1907. Wood, bamboo, raffia.

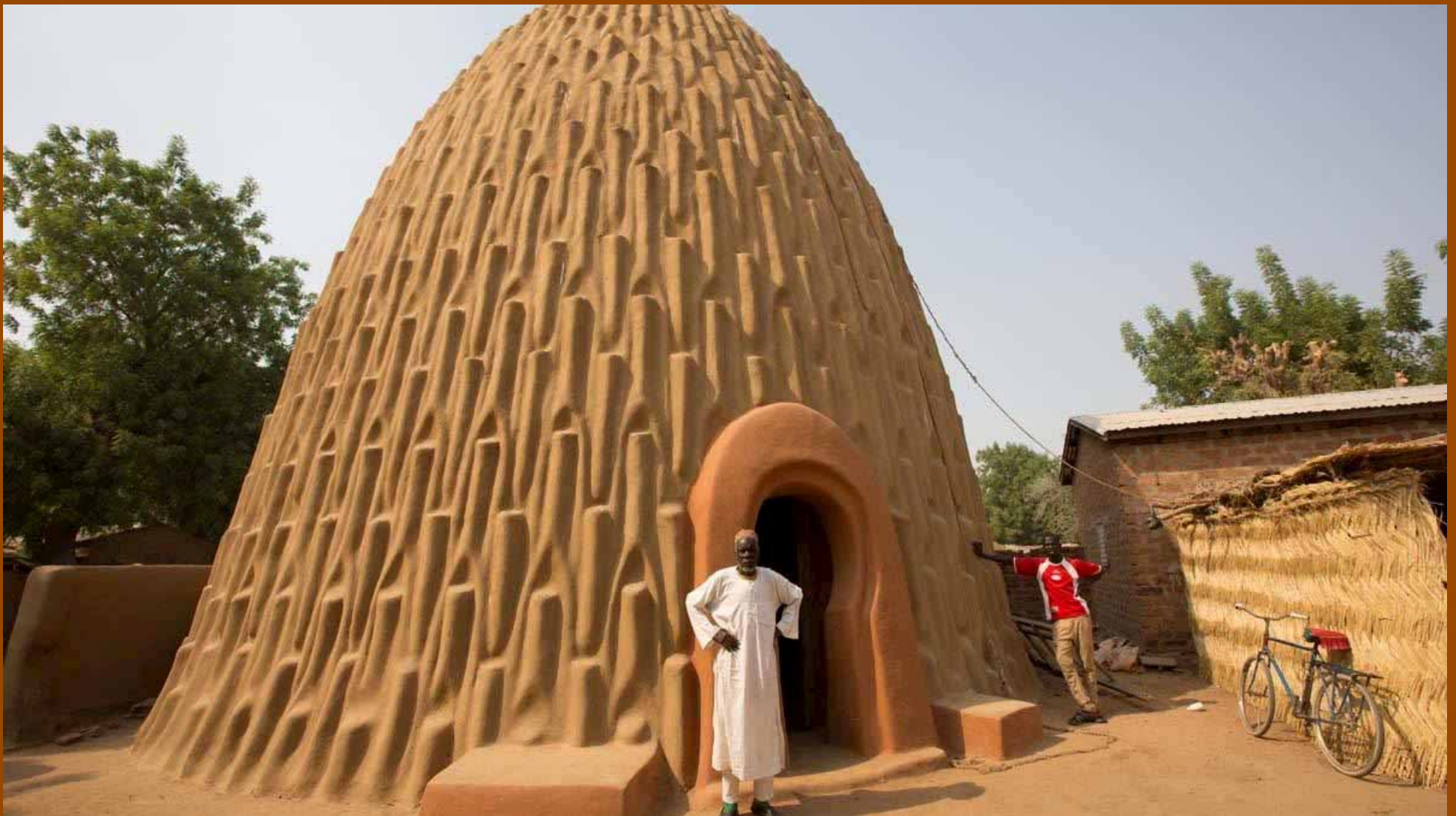




Bamum Kingdom, Cameroon, *King's traditional palace & compound*, 1920s. Wood, bamboo, raffia.



Bamileke Kingdom (Bandjoun), Cameroon, *King's Palace*, early 20th century. Wood, bamboo, raffia.



Mousgoum peoples, Cameroon, *Teleuk house*, 20th century. Adobe.