

ARTHIST 345/AAAS 348  
*AFRICAN ART: FROM ROYAL COURT TO  
CONTEMPORARY MARKETPLACE*

# FON

## DAHOMEY II

Wednesday, March 1, 2023

Left: Fon (Republic of Benin), Royal stool/throne of King  
Ghézo, c. 1818-1858. Wood, applique brass sheets.





Above: Fon peoples (Cyprien Tokundagba), Republic of Benin, *Adjalala building, King Guezo's palace*, 20<sup>th</sup> century. Polychrome adobe.





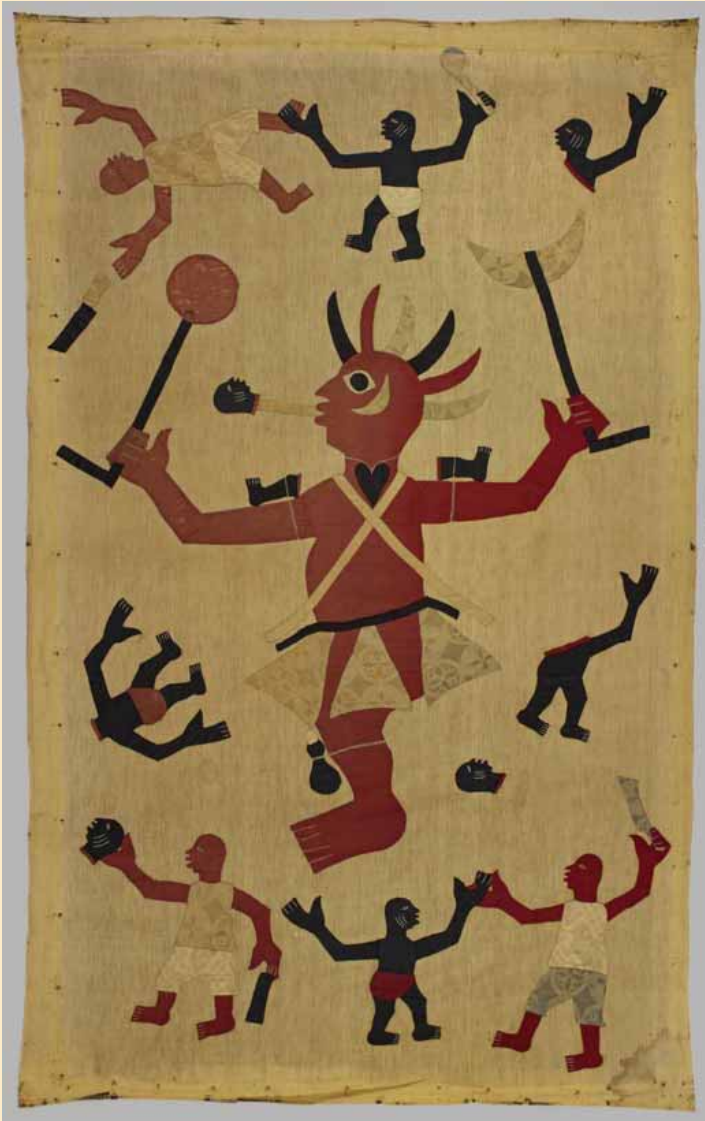
Above: Fon peoples (Cyprien Tokundagba), Republic of Benin, *Detail of bas-relief from the Adjalala building, King Guezo's palace, 20<sup>th</sup> century. Polychrome adobe.*



Above & right: Fon peoples (Sosa Adede), Republic of Benin, *Royal doors* from King Glele's palace and tomb, 1860. Painted wood.







Left & right: Fon peoples (Yemadje workshop), Republic of Benin, *Applique banners*, 20<sup>th</sup> century. Cotton.



Left: Fon peoples (Sosa Adede), Republic of Benin, *Man-shark dedicated to King Gbehanzin*, 1889-94. Polychrome wood. Right: Fon peoples (Sosa Adede), Republic of Benin, *King Glele in the guise of a Lion*, ca. 1858-89. Polychrome wood.





Left: Fon peoples (Sosa Adede), Republic of Benin, *Man-shark dedicated to King Gbehanzin*, 1889-94. Polychrome wood. Center: Fon [peoples (Sosa Adede), Republic of Benin, *King Guezo*, 19<sup>th</sup> century. Polychrome wood. Right: Fon peoples (Sosa Adede), Republic of Benin, *King Glele in the guise of a Lion*, ca. 1858-89. Polychrome wood.



Left: Fon peoples (Ganhu Huntondji), Republic of Benin, *Warrior Figure*, ca. 1858-89. Wood & iron. Right: Fon peoples (Akati Akpele Kendo), Republic of Benin, *Warrior Figure*, ca. 1858-89. Iron.