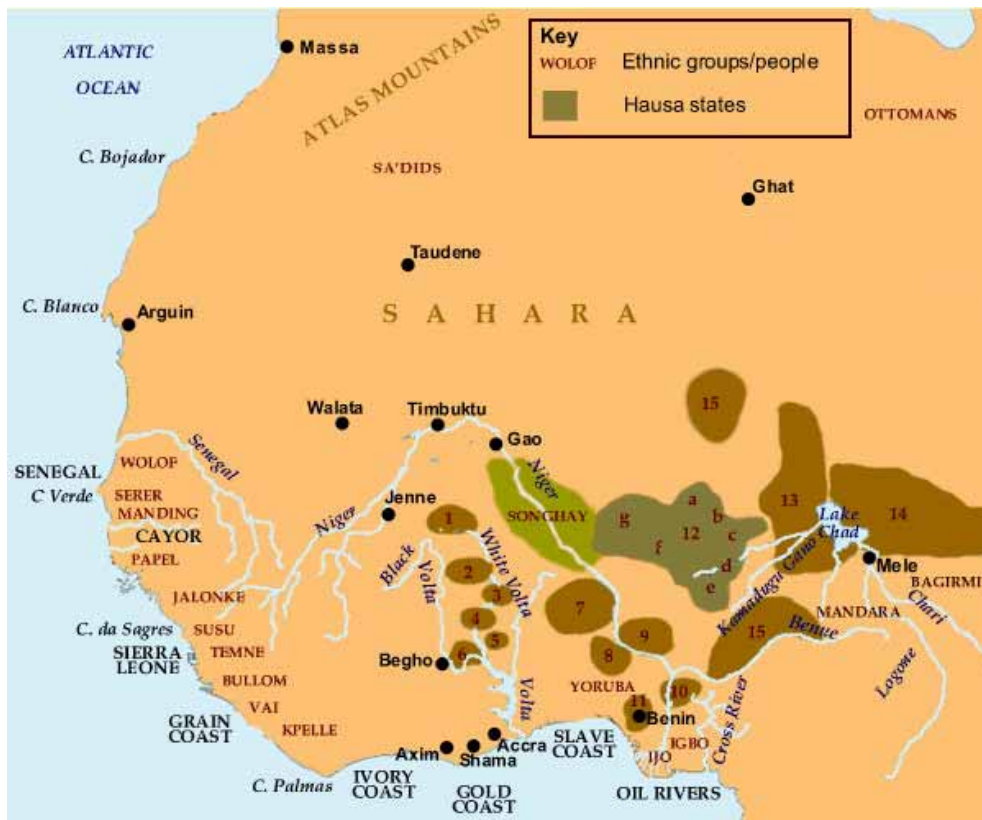


# Mande/Akan

Monday, February 13

Right: Ewe peoples (Ghana), Women's wrap (kpetoe), 20<sup>th</sup> century. Cotton & silk. Below: Mende peoples (Sierra Leone), Blanket, 20<sup>th</sup> century. Cotton.





Maps of West Africa, showing geographic region where Mande- and Gur-speaking peoples live.





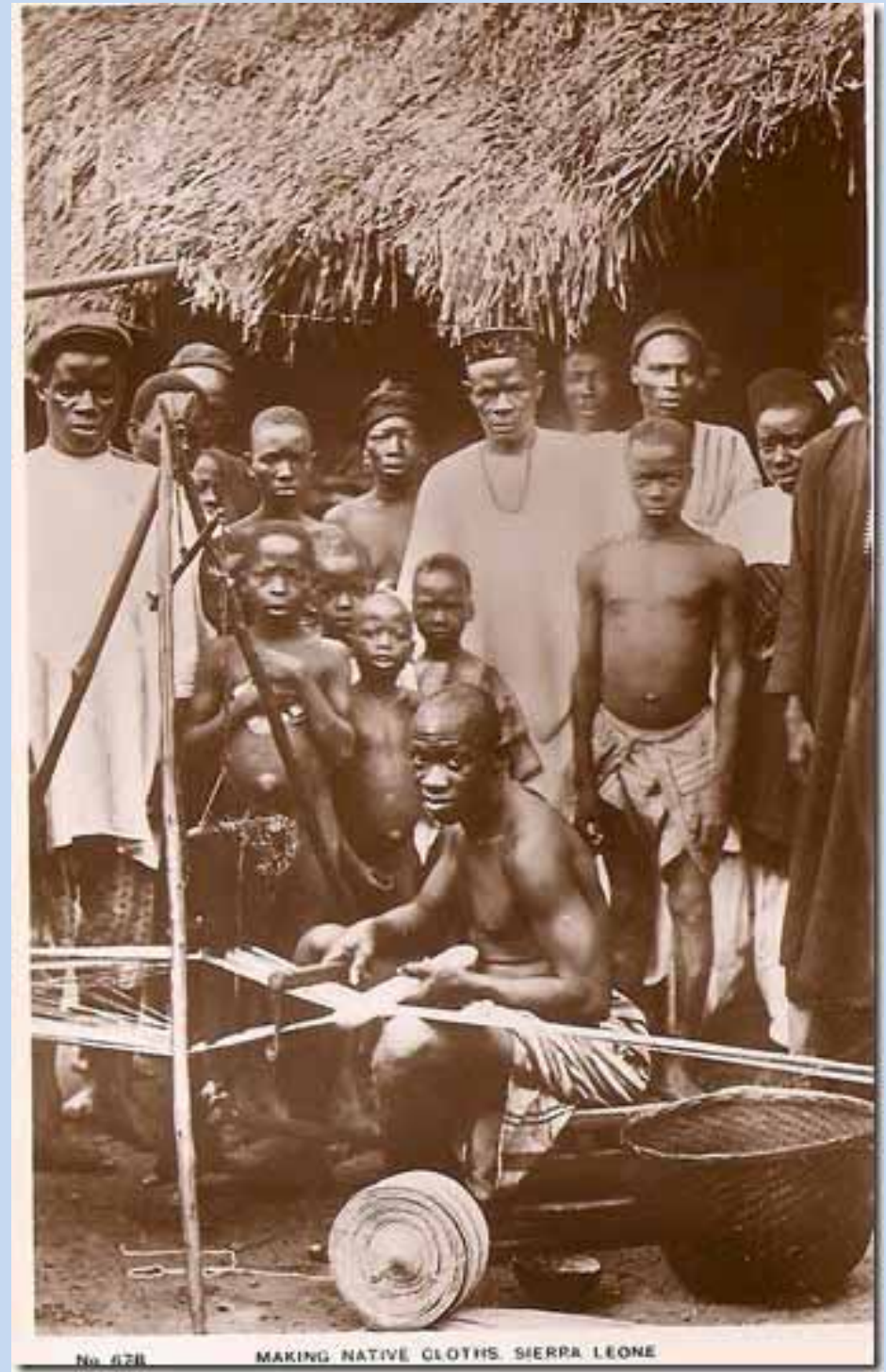


Left: A round adobe dwelling with thatched roof, Guinea, 21<sup>st</sup> century. Right: Kogi woman standing in front of a traditional adobe/thatched roof dwelling, Colombia, 21<sup>st</sup> century.





Above left: Tellem peoples (Mali), *Fragment of a blanket*, 11<sup>th</sup> century CE. Cotton. Below: Mande peoples (Sierra Leone or Liberia), *Three bolts of "Country cloth,"* 20<sup>th</sup> century. Cotton. Right: Mende weaver operating a tripod loom, Sierra Leone, early 20<sup>th</sup> century.



No. 428

MAKING NATIVE CLOTHS. SIERRA LEONE





Mende peoples (Sierra Leone),  
*Gown*, 19<sup>th</sup> century. Cotton.





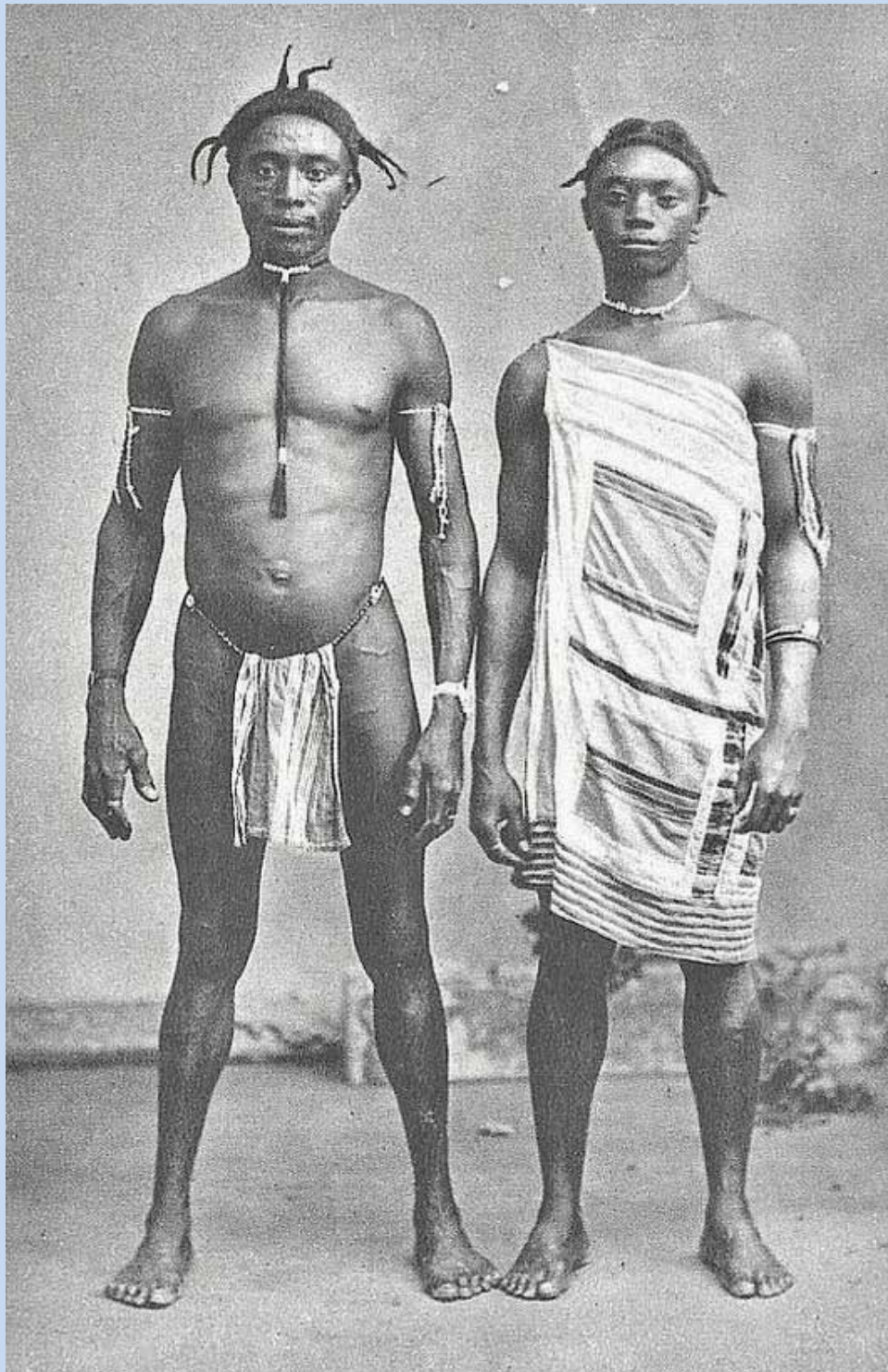
Above left: Ewe weaver working on a narrow-strip loom, Ghana. Late 20<sup>th</sup> century. Below left: Ewe peoples (Ghana), Detail of cloth, 20<sup>th</sup> century. Cotton.





Roy Sieber, *Keeper of the Larabanga Mosque, Ghana*, 1967. Photograph.





**Left: Saramaka men wearing patchwork and applied loincloth and cape, Suriname, 1900s. Above & right: Saramaka peoples (Suriname), Patchwork and applied men's cape, 1920s. Cotton.**







**Left: Richard Price, Saramaka Chief's Funeral, Suriname, 1967. Right: William Ferris, Amanda Gordon with one of her quilts, Vicksburg, Mississippi, 1967.**



**Phyllis (enslaved woman in Columbus, Georgia), Applique Quilt, 1850s. Cotton.**

