

**ARTHIST 383-01/AAAS 329-01/  
ICS 226-01/THE BLACK ATLANTIC**

# **YORUBA I**

**Monday, January 30**

**Yoruba culture, Nigeria, detail of an Ibeji (twin) figure, showing abaja markings, 20<sup>th</sup> century. Painted wood.**





Left: Bishop Samuel Ajayi Crowther (1809-1891); Above: Map of Yorubaland.



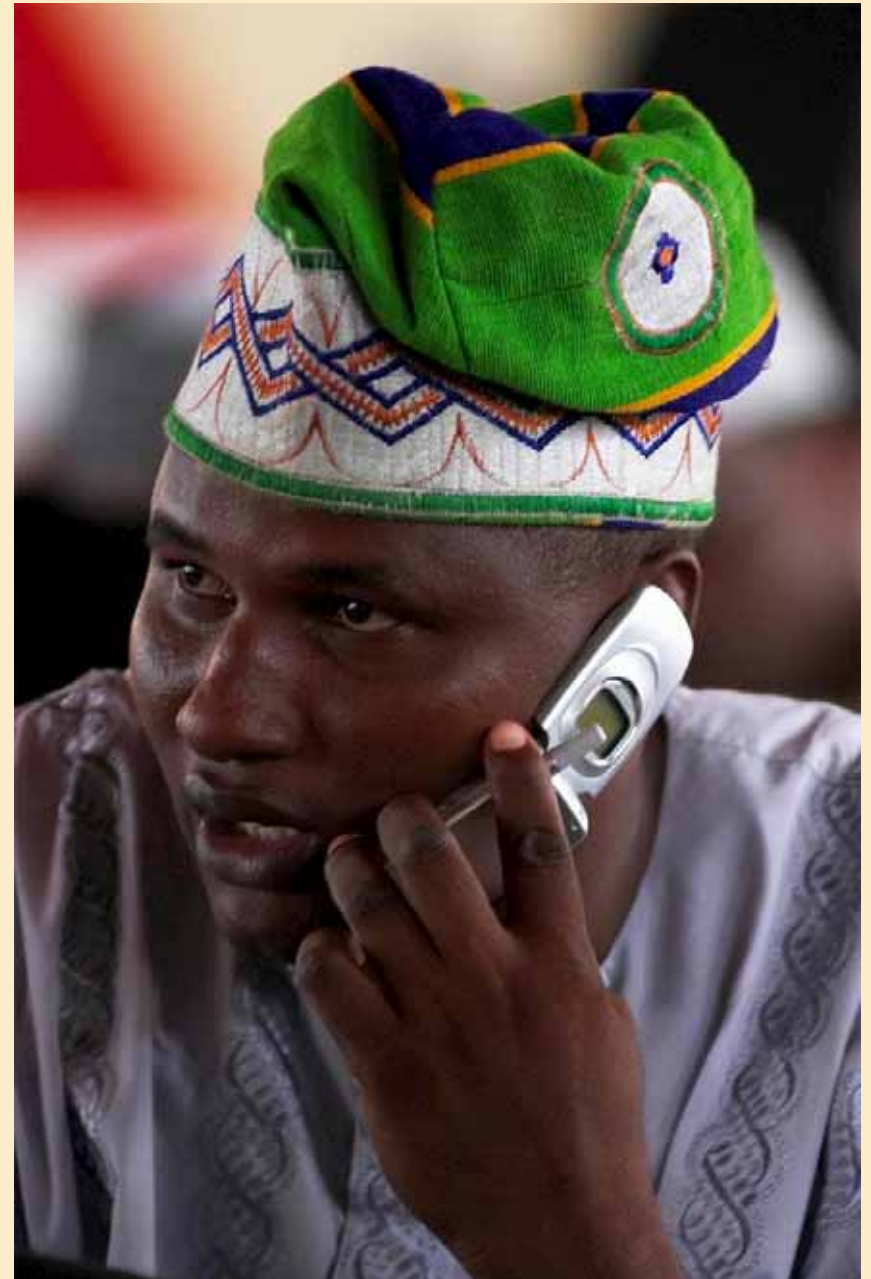
Clockwise from lower left: Yoruba woman wearing abaja (ethnic scarifications) on forehead and cheeks, 1990s. Ife Kingdom (Nigeria), Head of an Oni, 14<sup>th</sup>-16<sup>th</sup> century. Copper. Yoruba man talking on cellphone, Lagos, Nigeria, 2004. Photograph.

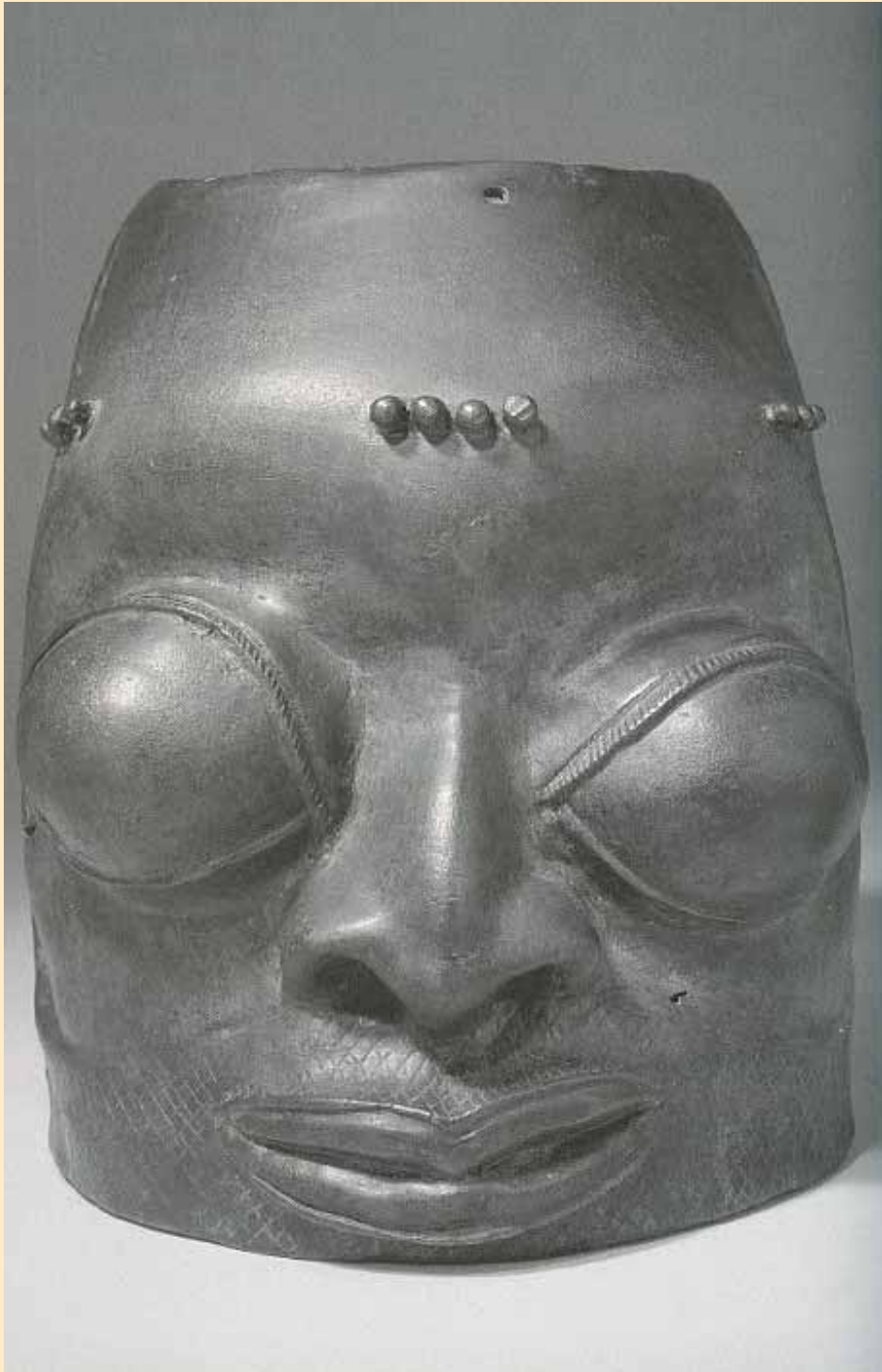


Ewà ode: outer beauty

Ewà inú: inner beauty

Iwà: character



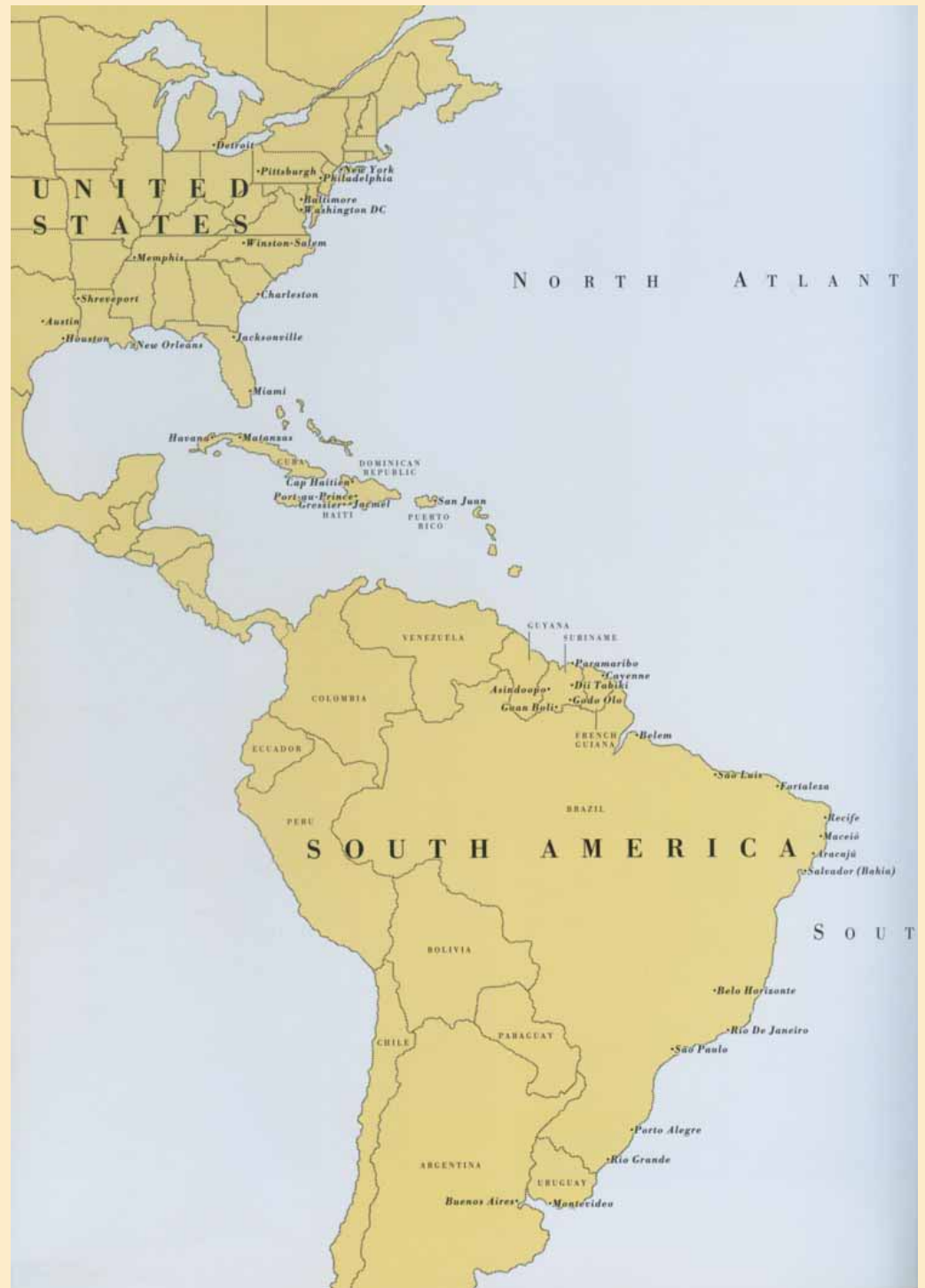


Left: Yoruba culture, Ijebu group (Nigeria), Head, 16<sup>th</sup> century. Brass. Above: Yoruba peoples (Nigeria), Ceremonial vessel for Shango altar (ikoko shango), late 19<sup>th</sup> century. Terracotta.

orí: head

ojú: eyes.

Map of the Black Americas (including those locations where Yoruba religions and cultures persist)





Upper left: Yoruba peoples (Nigeria), Deji of Akure wearing beaded crown, robe & sandals, circa 1960s. Lower left: Beads for sale in a Botanica, Miami, Florida, 21<sup>st</sup> century.

ohun èsó: ornamentation



Above: Yoruba woman sporting a “basket” hairstyle, 1980s. Right: Yoruba peoples (Nigeria), Woman holding a bowl in the shape of a chicken, late 19<sup>th</sup> century. Wood.

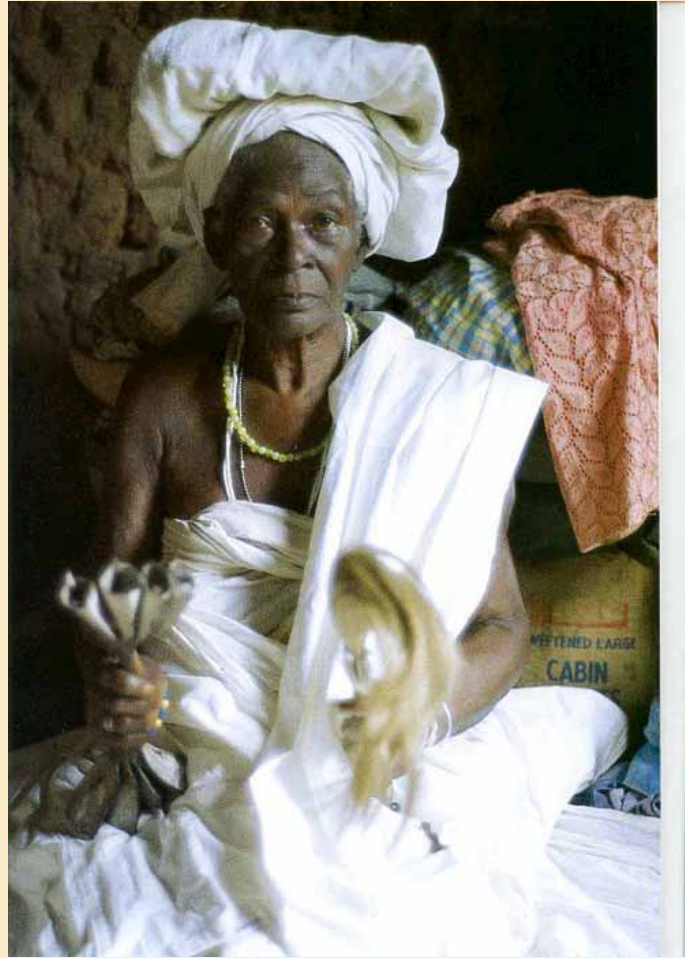
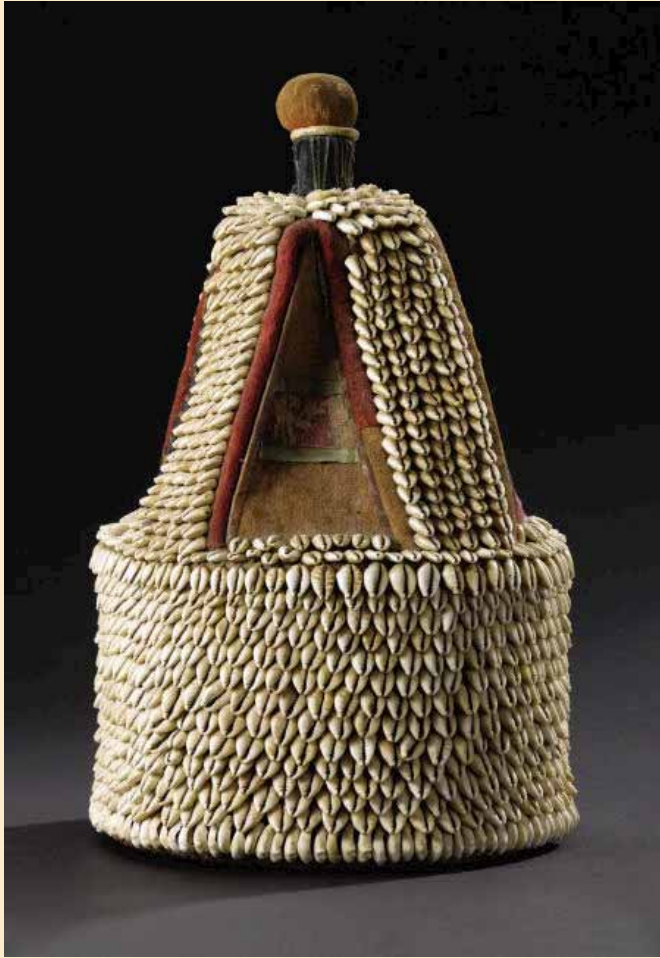


Ewà: Well made, or well done.

ifarahon: clarity of mass

fifin: clarity of line

didon: luminosity, delicacy



Left: Yoruba peoples (Nigeria), Crown/shrine for the head (*ile ori*), 20<sup>th</sup> century. Cowrie shells, leather, cloth. Center: Yoruba priestess for the goddess Odua, Ilaro, Nigeria, 1970s. Right: Yoruba peoples (Nigeria), Ogboni shrine statue, 20<sup>th</sup> century. Wood, pigment.

gígún: relative straightness



***Eshu-Elegba (Nigeria/Benin), Exu (Brazil), Echu, Elegua (Cuba)  
Evocations of Commitment, Contingency***



Left: Yoruba peoples (Nigeria), Eshu Dance wand, 19<sup>th</sup> century. Wood, cowrie shells, beads, metal, cloth, leather. Center: Right: Areogun (Yoruba artist) (Nigeria), detail of Palace door, Osi-Ilorin, early 20<sup>th</sup> century. Wood. Upper right: Eshu/Elegba figure, 20<sup>th</sup> century, Miami. Concrete, cowrie shells. Lower right: Beads for Eshu/Elegba, 21<sup>st</sup> century, New York, NY. Plastic beads, thread.

## ***Ifa (Nigeria/Benin/Brazil/Cuba) Divination***



Above: Fon peoples (Republic of Benin), Ifa Divination Tray, late 16<sup>th</sup> century. Wood.  
Right: Owo civilization (Nigeria), Ifa Divination tapper, 18<sup>th</sup> century. Ivory.



## ***Osanyin (Nigeria/Benin/Brazil) & Osain (Cuba) Evocation of healing***

Yoruba peoples (Nigeria), 2 views of a medicine staff for Osanyin (Osun), 20<sup>th</sup> century. Iron.

