



ARTHIST 345-01/AAAS 348-01/ICS
223-01/*AFRICAN ART: FROM ROYAL
COURT TO CONTEMPORARY
MARKETPLACE*

YORUBA III

Wednesday, February 15, 2023

Right: Yoruba peoples (Nigeria), *Ceremonial Ax for
Ogun (aringo jagun)*, early 20th century. Wood, metal.



Clockwise from above: Yoruba peoples (Nigeria), *Deji of Akure wearing beaded crown, robe & sandals, circa 1960s*. Yoruba peoples, Nigeria, *Staff for Shango (Oshe Shango), 20th century*. Wood. Yoruba culture, Nigeria, *detail of an Ibeji (twin) figure, showing abaja markings, 20th century*. Painted wood.

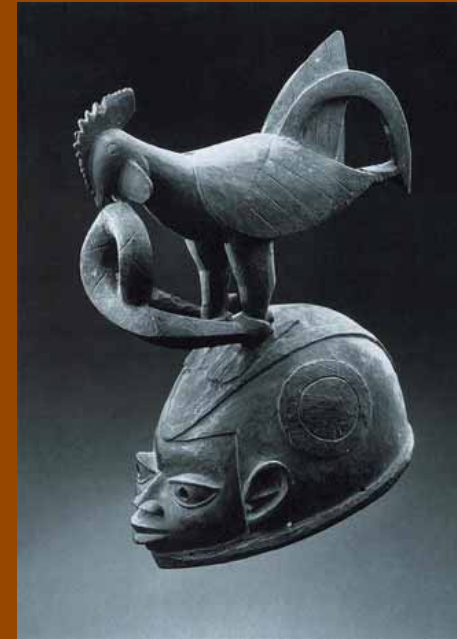


Left: Yoruba peoples, Shango Shrine Figure holding a dance staff (Oshe shango), 19th century. Wood & beads. Above: Yoruba culture, Nigeria, Ibeji (twin) figure, 20th century. Wood with iron bracelets.

gígún: relative straightness



Yoruba culture, Nigeria, Ibeji (twin) figures, 20th century. Wood, pigment, beaded jackets.



Upper and lower left: Yoruba peoples (Abomey, Republic of Benin), Egungun masqueraders, 2012. Above center: Yoruba peoples, Nigeria, Egungun masquerade head crest, 20th century. Painted wood. Above right: Yoruba peoples (Ketu, Republic of Benin), Gelede masqueraders, 2016. Below: Duga (Yoruba artist from Meko, Nigeria), Gelede helmet mask, 20th century. Wood, pigment.



Left: Yoruba peoples (Nigeria) Epa headdress, 20th century. Wood, pigment. Right: Yoruba peoples (Nigeria), Epa masquerader, Ekiti, Nigeria, 20th century.



Clockwise from lower left: Yoruba peoples (Nigeria), *Fan for Yemoja*, 20th century. Brass. Yoruba peoples (Nigeria), *Oya Shrine Sculpture*, early 20th century. Wood, pigment. Areogun (Yoruba artist), *Epa Mask, "The Owner of the Deep Set Eyes" (Olójú Foforo)*, Surmounted by a Figure of the Priestess of the Goddess Òsun, early-mid 20th century. Wood, pigment, string, and fiber. Yoruba peoples (Nigeria), *Shrine sculpture with Òsun devotee*, early 20th century. Wood, pigment.



Left: Yoruba peoples (Nigeria), *Shrine sculpture for Sopona*, 20th century. Wood, beads, shells, straw, hair, monkey skull.
Center: Fon peoples (Republic of Benin), *Shrine for Sakpata, Abomey*, 20th century. Right: Devotee of Nana Bukuu holding her dance wand (ileesin), Republic of Benin, 1960s. Straw, beads, leather, chicken feet.