



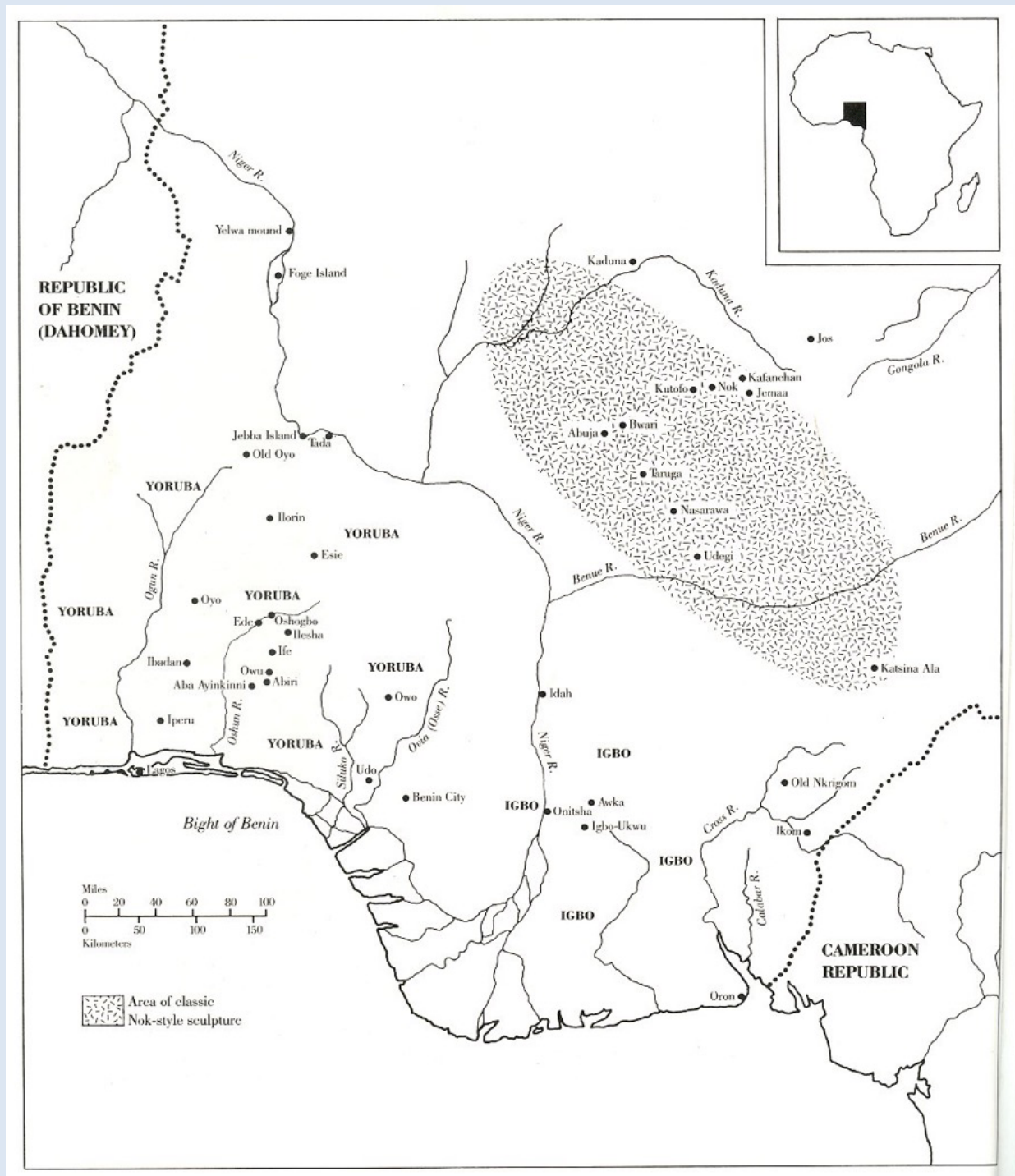
ARTHIST 345-
01/AAAS 348-01/ICS
223-01/*AFRICAN ART:
FROM ROYAL COURT
TO CONTEMPORARY
MARKETPLACE*

YORUBA I

Wednesday, February 8

Detail: Ife civilization, Nigeria, Head of an Oni,
circa 14th century. Zinc brass.

Map of the cities, ethnic groups and civilizations of Ancient Nigeria.





Above: Oni of Ife with recently unearthed brass heads, Ife, Nigeria, circa 1940. Right: Staff of Oranmiyan, Ife, Nigeria, 500 BCE - 500 CE. Granite.





Ife civilization (discovered in Tada, Nigeria), Seated figure, late 13th century. Copper.



Left: Ife civilization, Nigeria, Head of a Queen, early 14th century. Terracotta. Right: Ife civilization, Nigeria, Ceremonial vessel in the form of a Queen, early 14th century. Zinc brass.



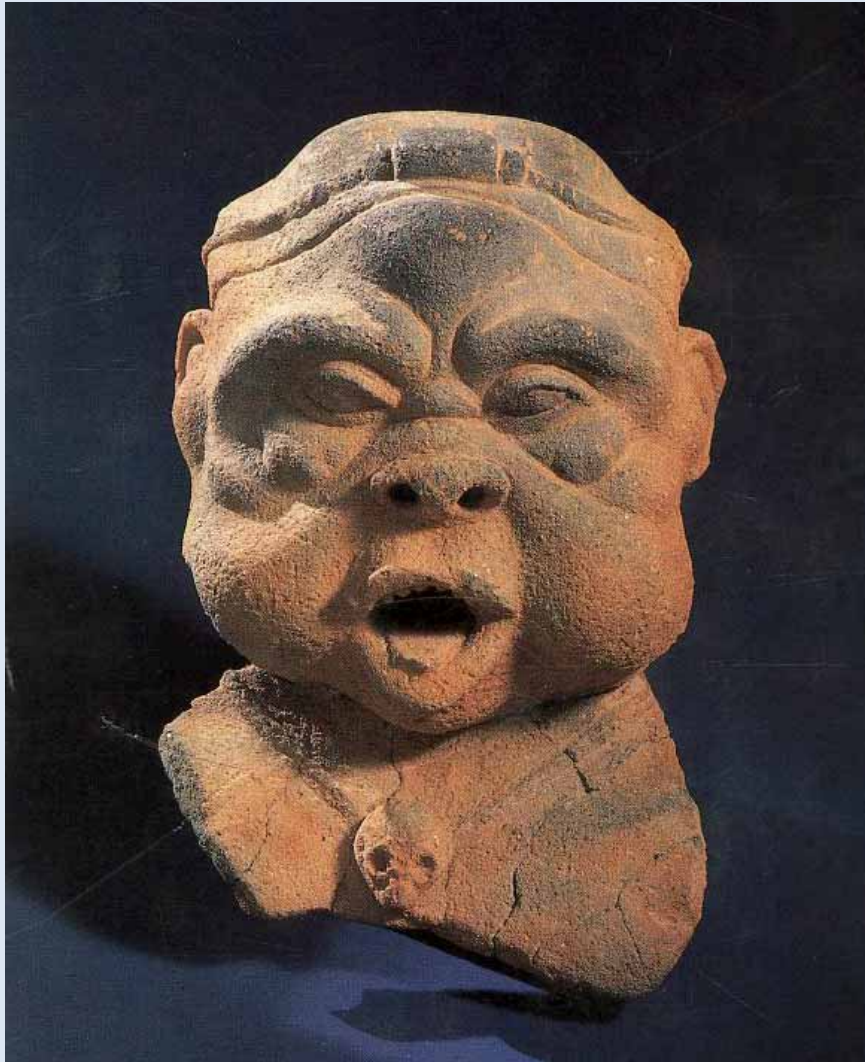
Above: Ife civilization (Nigeria), *Head of an Oni*, 12th-15th century. Zinc brass. Right: Ife civilization (Nigeria), *Figure of an Oni*, early 14th century. Zinc brass.



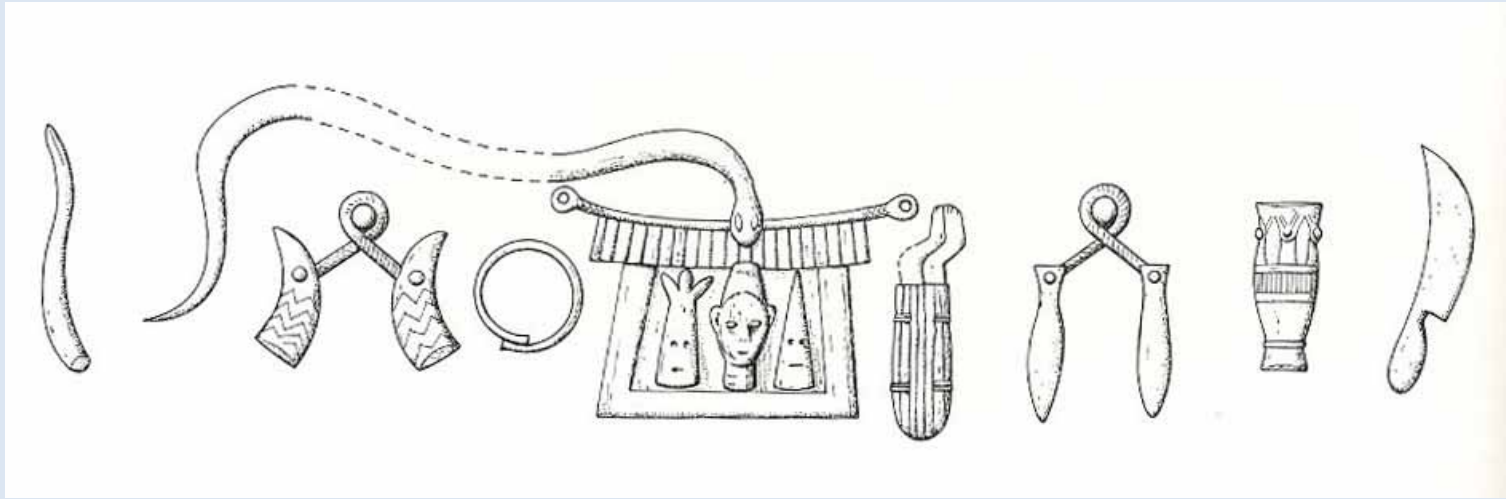


Above: Ife civilization, Nigeria, Mask of an Oni, circa 14th century. Copper. Right: Ife civilization, Nigeria, Head of an Oni, early 14th century. Zinc brass with traces of pigment.





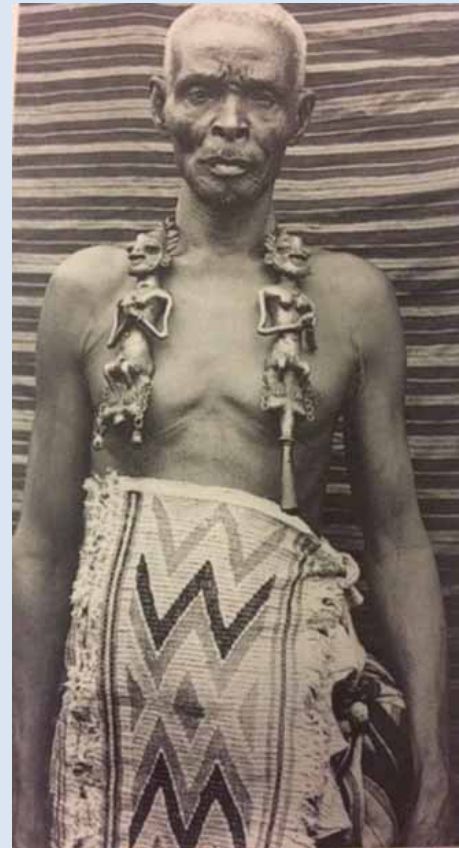
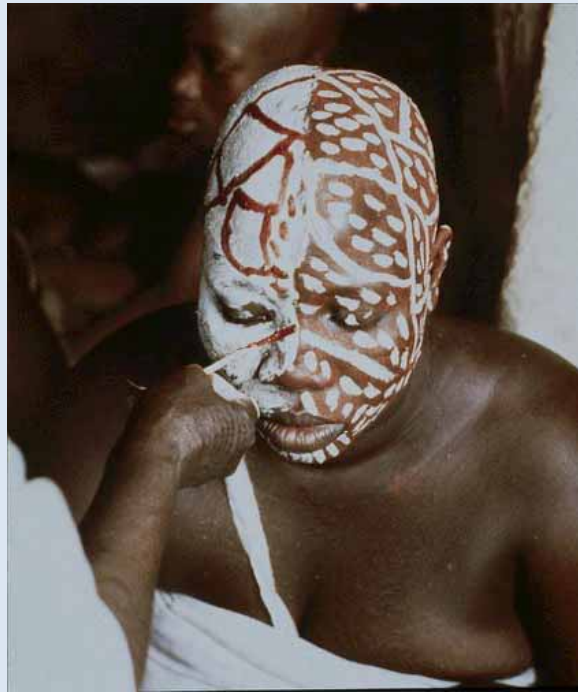
Ife civilization, Nigeria, Head of a physically stigmatized person, early 14th century. Terracotta.



Left: Ife civilization, Nigeria, Ritual pot, early 14th century. Terracotta. Above: Drawing of the motifs encircling the ritual pot at left.

Below: Owo civilization,
Nigeria, Head of a bearded
man, 15th century. Terracotta.
Right: Owo civilization,
Nigeria, Sculptural fragment of
hands holding the head of an
animal, 15th century. Terracotta.





Clockwise from lower left: Obatala devotees at the Itapa festival, Ile Ife, Nigeria, 2015. Yoruba initiate being decorated with red and white pigment, Nigeria, 20th century. A Yoruba ogboni wearing edan, Nigeria, 20th century. Yoruba peoples (Abeokuta, Nigeria), *Multi-figure sculpture for an Ogboni shrine*, 20th century. Wood, pigment.