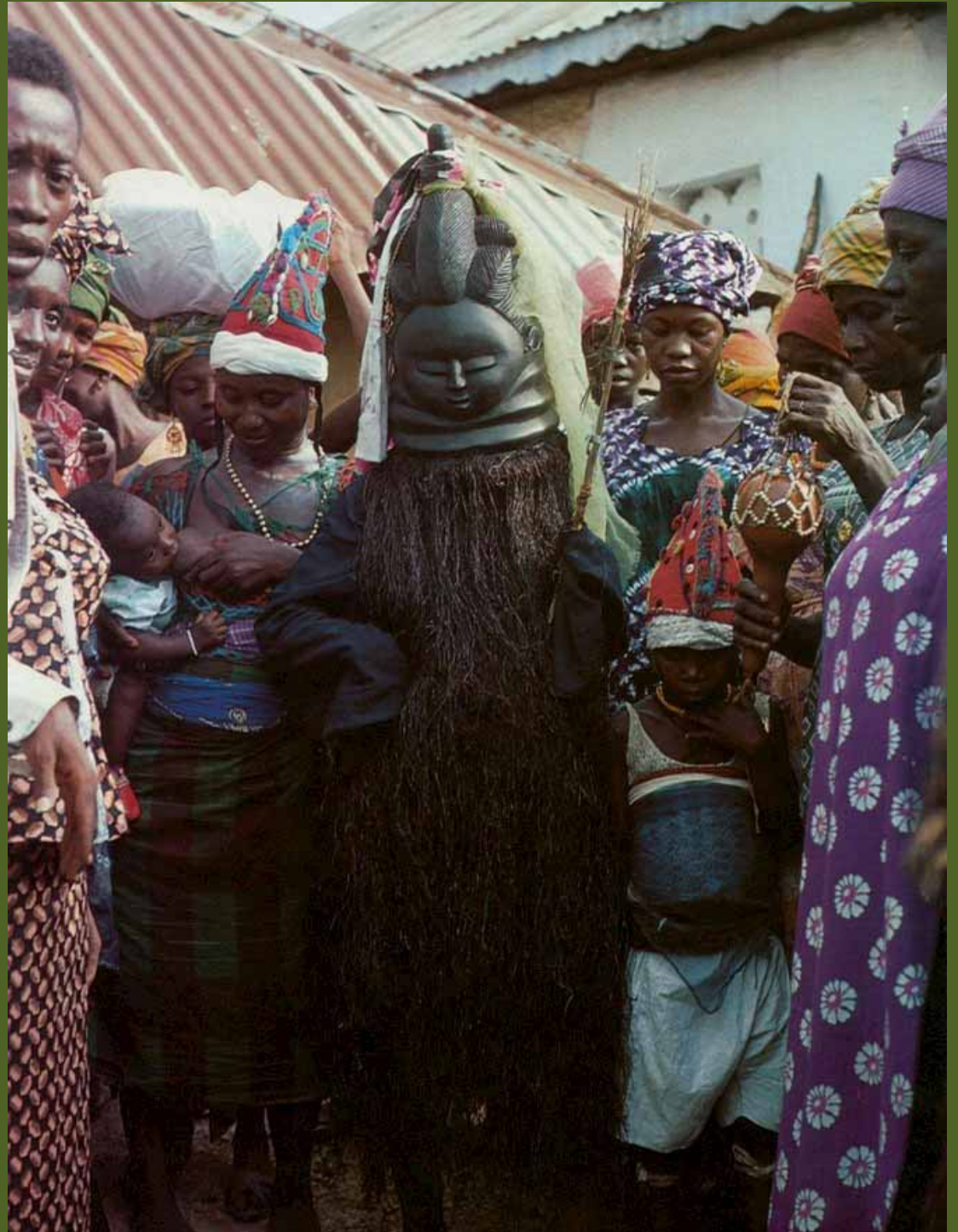


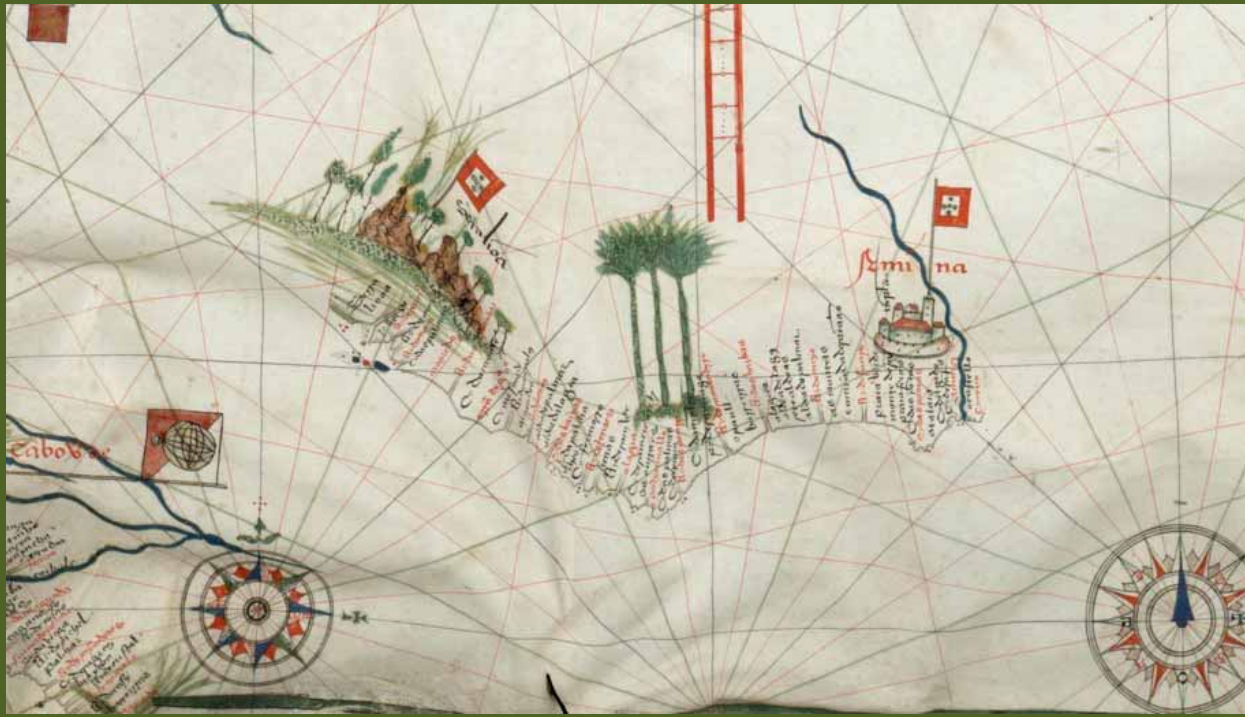
ARTHIST 345-01/AAAS 348-01/ICS
223-01/AFRICAN ART: FROM ROYAL
COURT TO CONTEMPORARY
MARKETPLACE

Western Guinea Peoples

Monday, January 30, 2023

Right: Temne villagers surrounding *nowo*,
Sierra Leone, 1976.





Above left: Jorge de Aguiar, Detail of a chart of the Mediterranean, Western Europe, and the African Coast, 1492. Below left: Sierra Leone coast with Sugar Loaf mountains to the east.





Upper left: Jodocus Hondius, Map of Guinee, circa 1620. Lower left: Jan Kips, Map of the Coast of Guinea and Bay of Sierra Leona, 1732.



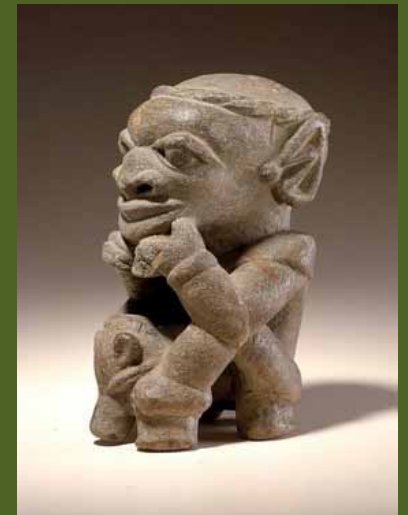
Baga (Guinea)



Left: Baga peoples (Guinea), *Maternal spirit (nimba)*, late 19th century. Wood, metal. Right: Baga peoples (Guinea), *Serpent (bansonyi)*, late 19th century. Wood, pigment.

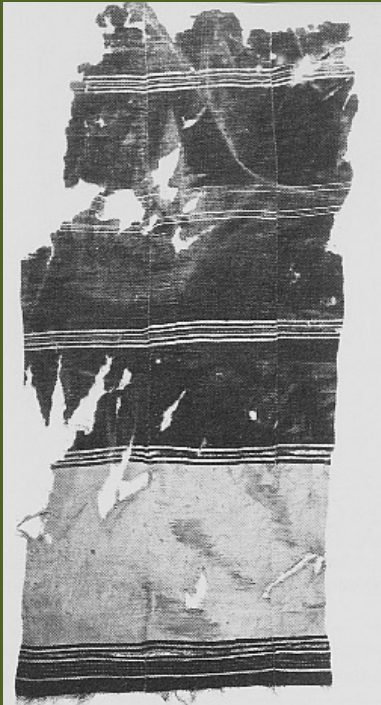


Sapi-Portugeuse & Unknown peoples (Sierra Leone)

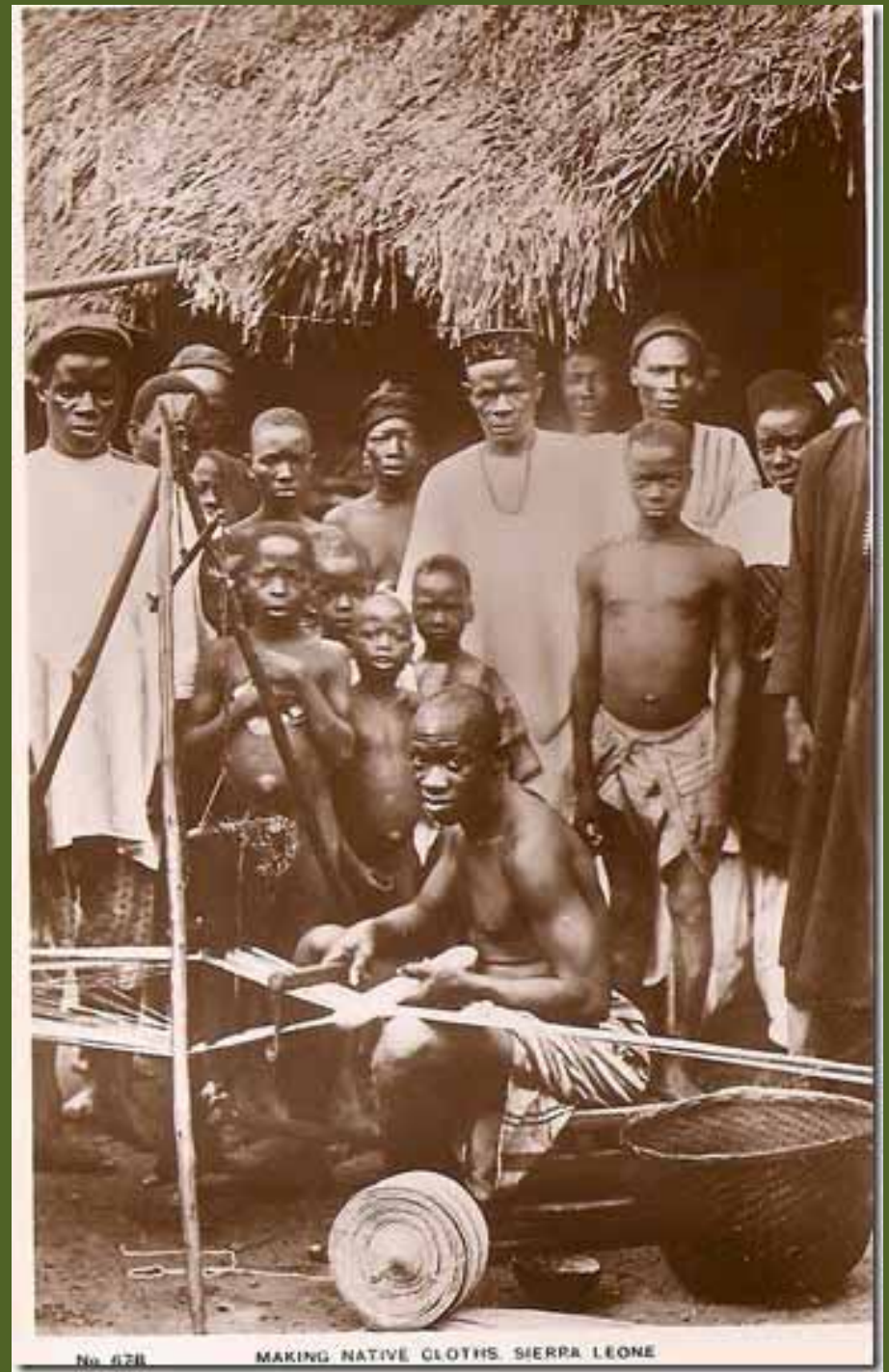


Left: Sapi-Portugeuse (Sierra Leone), *Salt cellar*, 1490-1530. Ivory. Upper right: Map of SE Sierra Leone/NW Liberia. Lower right: Unknown peoples (Sierra Leone), *Nomoli*, 15th-17th century. Steatite.

Mende/Temne/ Sherbro (Sierra Leone)



Clockwise from left: Tellem peoples, Mali, Fragment of a blanket, 11th century CE. Cotton; Mende weaver operating a tripod loom, Sierra Leone, early 20th century. Mande-speaking peoples, Either Sierra Leone or Liberia, *Three bolts of "Country cloth,"* 20th century. Cotton.





Clockwise from upper left: Map showing location of ethnic groups where Sande/Bundu is practiced. Members of the Poro Secret Society with “Binni devils”, 1910. Photograph. Mende peoples, Sande initiates in the bush, Sierra Leone, 1980s. Mende peoples (Sierra Leone), Postcard showing newly installed Sande members alongside *ndoli jowe*, Sierra Leone, 1910s.





Clockwise from upper left: Mende peoples (Sierra Leone), Examples of *sowei* and their assorted characteristics and visual elements, 20th century. Wood, pigment, raffia.



Dan/We/Baule (Liberia & Cote d'Ivoire)



Left: Ritual Masquerade, Liberia. Right: Dan peoples (Liberia), *Ceremonial Ladle (wunkirmian)*, before 1960. Wood, fiber, metal, and pigment.



Left: Sapo National Park, Liberia. Right: Coastal Liberia, *Nitien (Water spirit)*, 19th century or earlier. Brass.



Clockwise from lower left: Dan peoples (Liberia or Cote d'Ivoire), *Deangle mask*, early 20th century. Wood, pigment, cowrie shells. Ethnic group map of Core d'Ivoire. Yacouba people (culturally parallel to the Dan of Liberia) (Cote d'Ivoire), *Mask*, late 19th century/early 20th century. Wood. We artist (Cote d'Ivoire), . *Young maiden mask (ninea-gla)*, late 19th century/early 20th century. Wood, metal, cloth, hair.



Left: Professor Powell holding a passport mask (*ma go*). Right: Dan peoples (Liberia), *Passport masks (ma go)*, before 1950. Wood, beads.



Left: Baule peoples (Cote d'Ivoire), *Ceremonial Mask (goli)*. Wood, pigment. Center: Baule peoples (Cote d'Ivoire), *Portrait mask*, late 19th century/early 20th century. Wood. Right: Baule peoples (Cote d'Ivoire), *Spirit wife figure (blolo bla)*, 20th century. Wood, pigment.