

**ARTHIST 345-01/AAAS 348-01/ICS 223-01/
African Art: From Royal Court to Contemporary Marketplace
Mondays & Wednesdays, 3:30pm - 4:45pm
Professor Richard Powell**

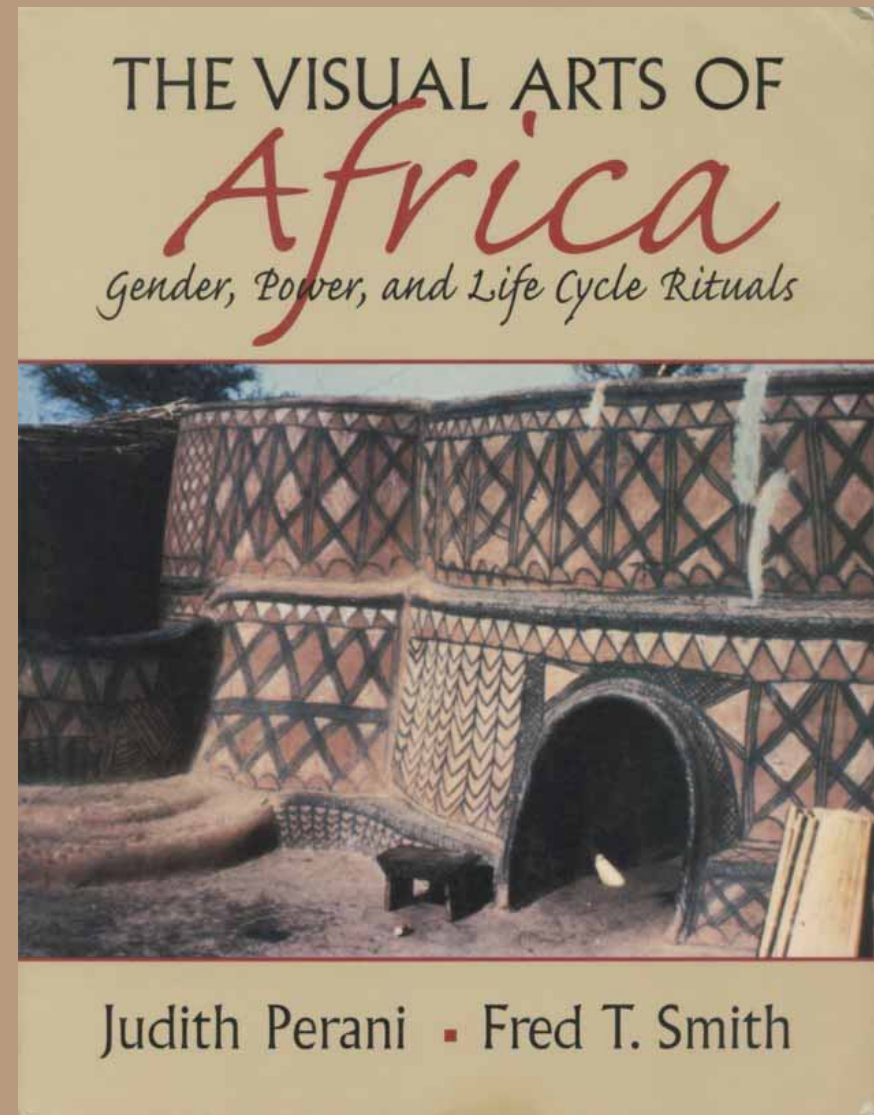
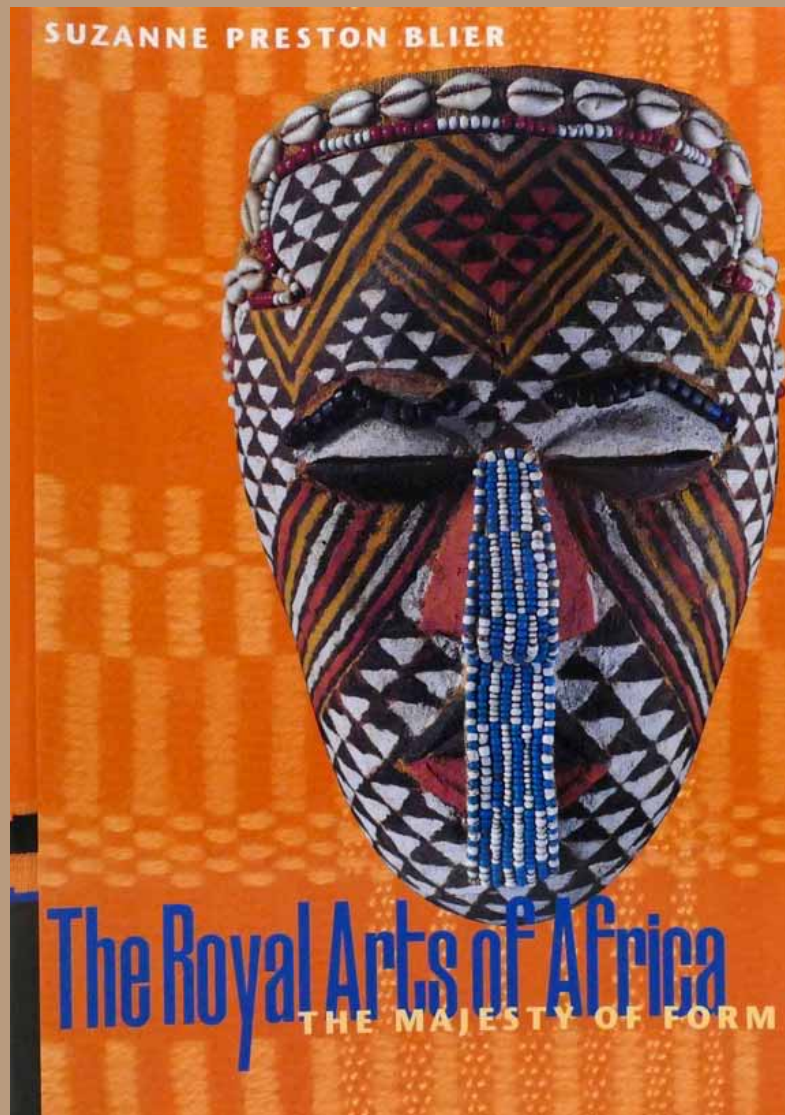


Asante Chief displaying gold jewelry and Kente cloth, Ghana. Late 20th century.



Above: Contemporary map of the African continent. Right: Yoruba culture (Nigeria), *Airowayoye I, Ruler of Orangun-Ila, in beaded crown and other regalia, 1977.*





Required Readings: Sakai Course website

Left: Suzanne Preston Blier, *Royal Arts of Africa: The Majesty of Form* (New York: Laurence King Publishing, 1998). Right: Judith Perani & Fred T. Smith, *The Visual Arts of Africa* (Upper Saddle River, NJ: Prentice Hall, 1998).

Wednesday, January 18/Lecture 2: *Ancient Africa*. Perani/Smith.



Above right: Kush Kingdom (Naqa, Sudan), *Temple of Apedemak*, 235 BCE -218 BCE. Stone.

Thursday, January 19, 5:30pm-7pm

Nasher Museum of Art at Duke University

*The Franklin Humanities Institute presents a roundtable discussion around Kenya-born artist Wangechi Mutu's **MamaRay**, the first sculpture commissioned by the Nasher Museum*

The event brings together several Duke faculty members, including Gustavo Furtado, Michaeline Crichlow, Felwine Sarr, Priscilla Wald, and Richard J. Powell, who along with Nasher Museum Director Trevor Schoonmaker will offer responses to *MamaRay* as a starting point of critical reflection and provide a context for its interpretation. Followed by a reception.

Wangechi Mutu, *MamaRay*, 2020. Bronze. Nasher Museum of Art at Duke University.



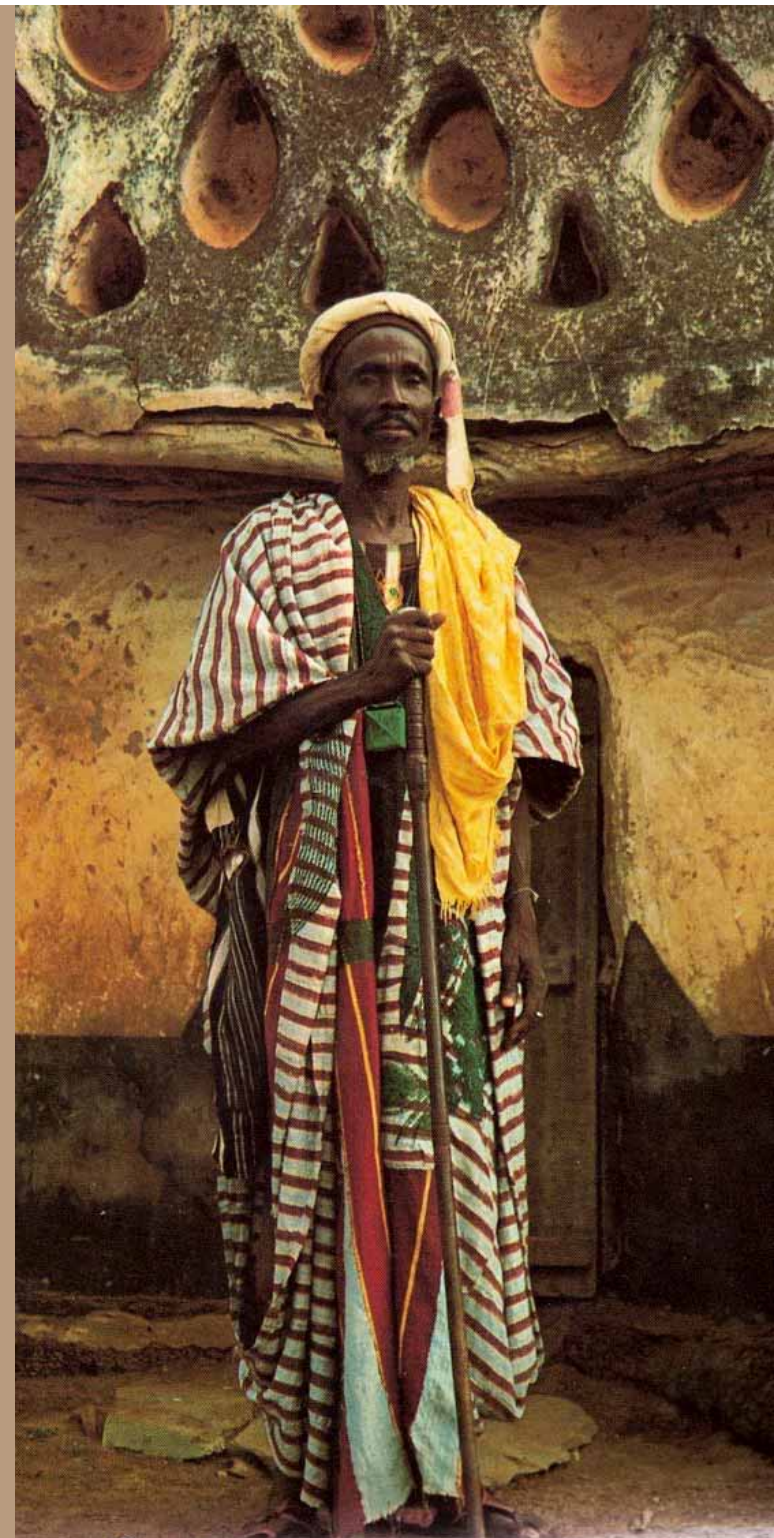


Monday, January 23/Lecture 3:
Western Sudanic Civilization.
Perani/Smith.

Djenne civilization (Mali), *Warrior*, 1300-1400. Terra cotta.

**Wednesday, January 25/Lecture
4: *Voltaic & Mande-speaking
peoples.* Perani/Smith**

**Roy Sieber, *Keeper of the Larabanga Mosque, Ghana*, 1967.
Photograph.**





**Monday, January 30/
Lecture 5: *Western
Guinea peoples.*
Perani/Smith.**

**Dan peoples (Liberia), *Ladle*, 20th century.
Wood, pigment.**

**Wednesday, February 1/
Lecture 6: *Akan peoples.*
Perani/Smith & Blier.**



Asante culture (Ghana), *Head*, before 1874. Gold.



Monday, February 6/Lecture 7:
The Benin Kingdom. Blier.

Benin Kingdom (Nigeria), *Plaque with warrior, leopards & mudfish*,
16th – 17th century. Brass.

**Wednesday, February 8/Lecture 8: *Yoruba civilization I.*
Perani/Smith & Blier.**



Ife Kingdom (Nigeria), *Head of an Oni* (detail), 12th-15th century. Brass.

**Monday, February 13/
Lecture 9: *Yoruba
civilization II.*
Perani/Smith & Blier.**

Yoruba artist (attributed to Adugbologe, Nigeria),
Ancestor/Hunter headdress (Ere Egungun Olode),
before 1922.





**Wednesday, February 15/
Lecture 10: *Yoruba
civilization III.*
Perani/Smith & Blier.**

**Left: Olowe of Ise/Yoruba culture (Nigeria), *Veranda
Post depicting an enthroned king with senior wife*,
ca. 1910-14. Polychrome wood.**

Monday, February 20/Midterm Review

Wednesday, February 22/Midterm Exam

Monday, February 27/Lecture 11:
Dahomey/Fon Kingdom I. Blier.

Left: Fon peoples (Sosa Adede), Republic of Benin, *Royal door from King Glele's tomb, 1860.*





**Wednesday, March 1/Lecture
12: *Dahomey/Fon Kingdom II.*
Perani/Smith.**

Sosa Adede/Fon culture (Rep. of Benin), *King Gbehazin as a man-shark*, 19th-century. Polychrome wood.

Monday, March 6/Lecture 13:
Eastern Nigerian peoples. Perani/Smith.



Nri Kingdom (Igbo Ukwu, Nigeria), *Ceremonial vessel (with conch shell and leopard)*, 9th-century. Leaded bronze.

Wednesday, March 8/Tour of the African Art Gallery, Nasher Museum of Art at Duke University.



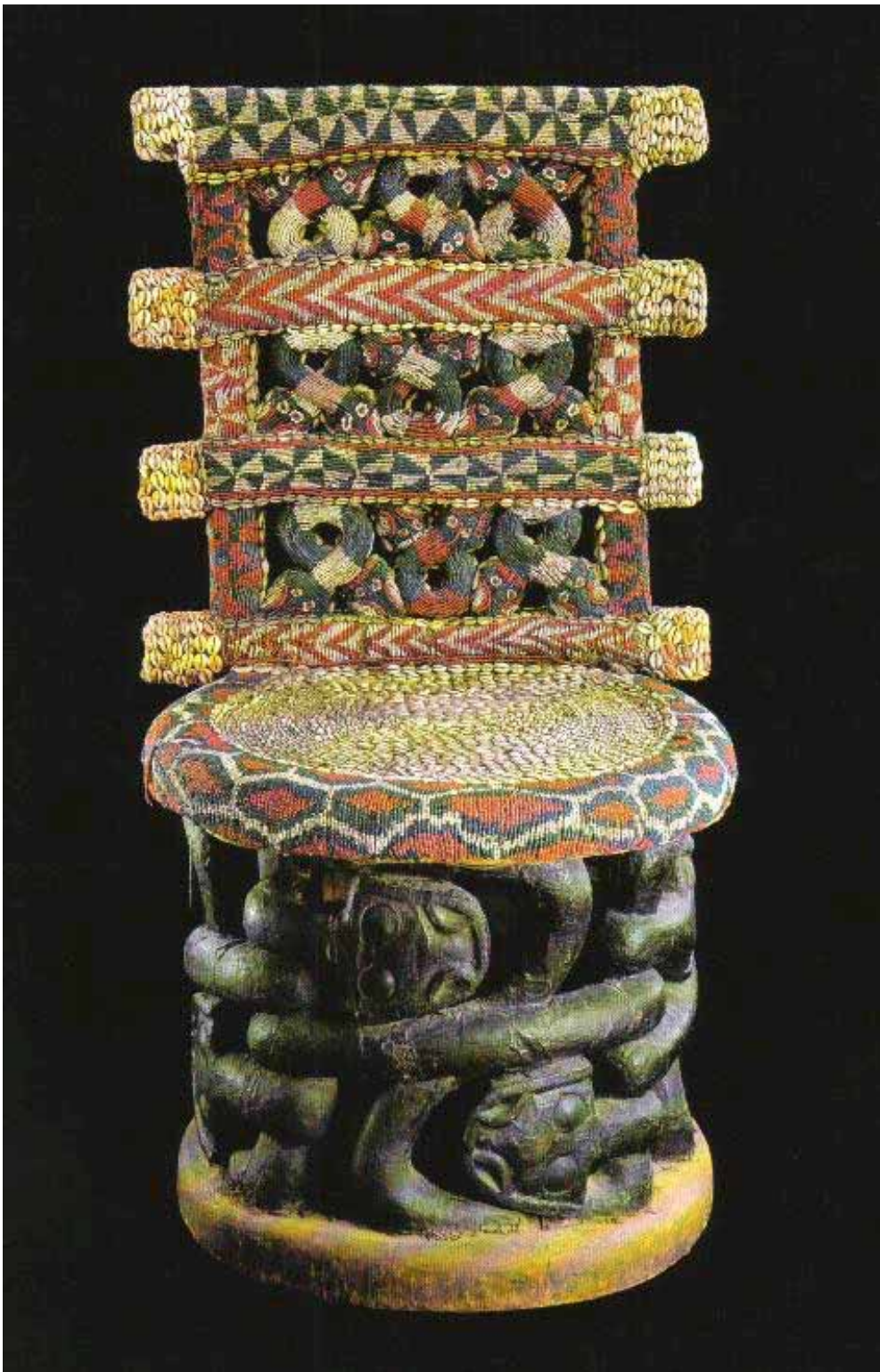
Friday, March 10: Spring Break begins

Monday, March 20: Spring Break ends

**Monday, March 20/
Lecture 14: *Cameroon*
Grassfields civilization I.
Blier.**

Bangwa culture (Cameroon), *Mother of Twins*,
acquired 1897. Wood.





Wednesday, March 22/Lecture
15: *Cameroon Grassfields
civilization II*. Perani/Smith.

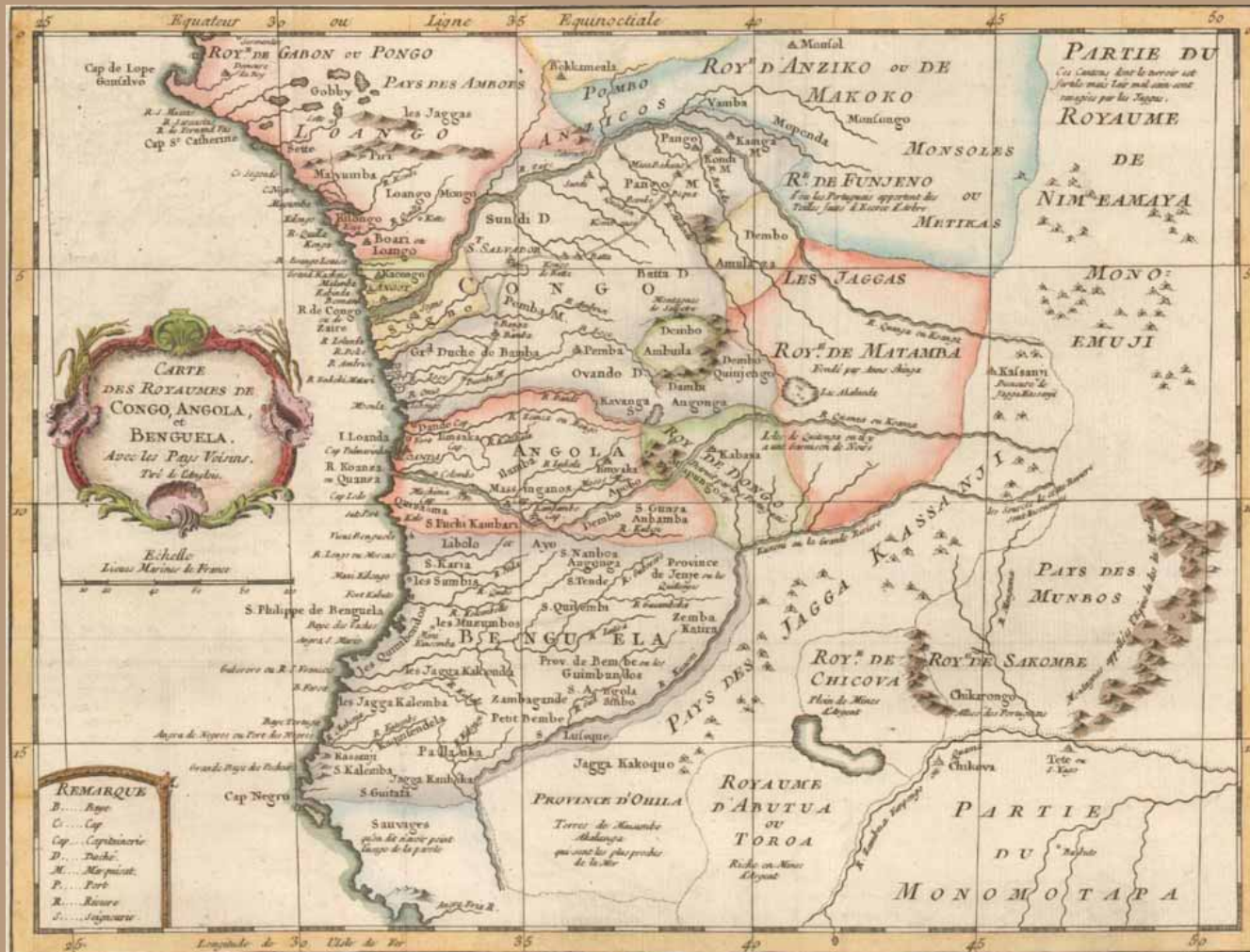
Bamileke culture (Cameroon), *Beaded throne*, 20th-century.
Wood, cloth, beads.

**Monday, March 27/Lecture
16: *Ogowe Basin & Northern
Equatorial Forest.*
Perani/Smith.**

Kota peoples (Gabon), *Reliquary figure*, early 20th century.
Wood, copper, and seashell.



Wednesday, March 29/Lecture 17: Congo: An Introduction. Perani/Smith



Jacques-Nicolas Bellin, *Map of the Congo, Angola and Benguela Kingdoms*, 1780. Hand-colored engraving on paper.

Monday, April 3/Lecture 18:
Kongo civilization. Perani/Smith & Blier



Yombe peoples, Democratic Republic of Congo, *Power figure (nkisi nkondi)*, 1905.

**Wednesday, April 5/
Lecture 19: *Kuba Kingdom
(Luba)*. Perani/Smith &
Blier.**

Kuba culture (Rep. of Congo), *Ndop Portrait of King
Mishe miShyaang maMbul*, ca. 1760-80. Wood.





Monday, April 10/Lecture 20:
Other Zaire River Basin peoples
(Yaka, Suku, Songye, Chokwe,
Pende. Perani/Smith.

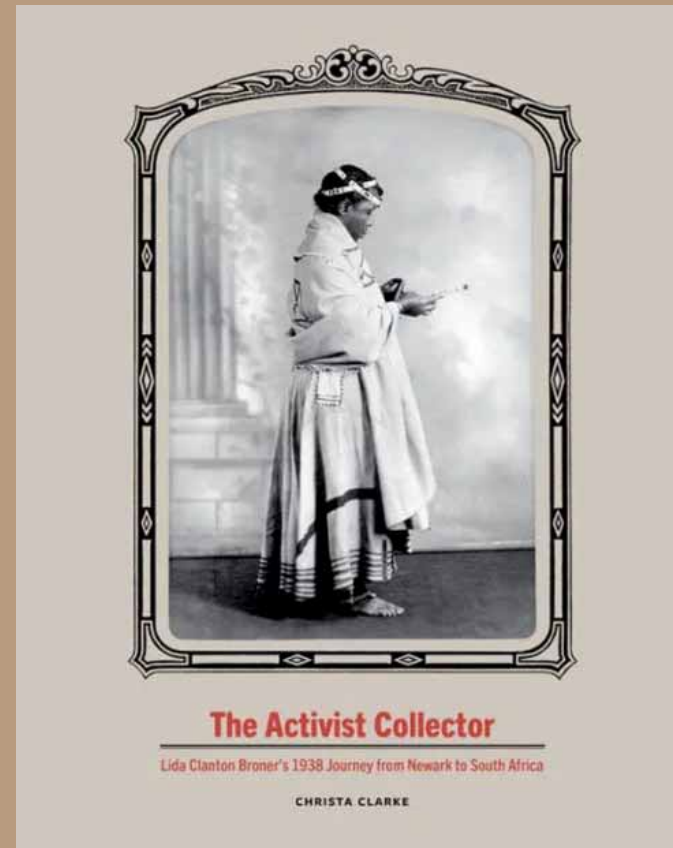
Man Ray, *Mode au Congo (Adrienne Fidelin wearing a Pende headdress)*, Paris, 1937. Photograph.

Wednesday, April 12/Lecture 21: *East African peoples.* Perani/Smith.



Zagwe Dynasty (Ethiopia), *Rock Hewn Church of Saint George*, 11th-century. Stone.

Monday, April 17/Lecture 22:
***Guest lecturer: Art historian and
former Newark Museum curator
of African Art, Christa Clarke,
Ph.D., on collecting and curating
African art.***



Wednesday, April 19/Lecture 23:
South African peoples. Perani/Smith.

Great Zimbabwe civilization (Zimbabwe), *Bird figure*, 13th – 15th century. Carved soapstone.



Monday, April 24/Lecture 24:
Modern/Contemporary Art. Perani/Smith.



El Anatsui (Nigeria), *Earth's Skin*, 2007. Mixed media.

Wednesday, April 26: Final Exam review

Monday, May 1, 9am-12noon: Final Exam