



ARTHIST 345-01/AAAS 348-01/ICS 223-01/AFRICAN ART: FROM ROYAL COURT TO CONTEMPORARY MARKETPLACE

# NIGERIA & CAMEROON

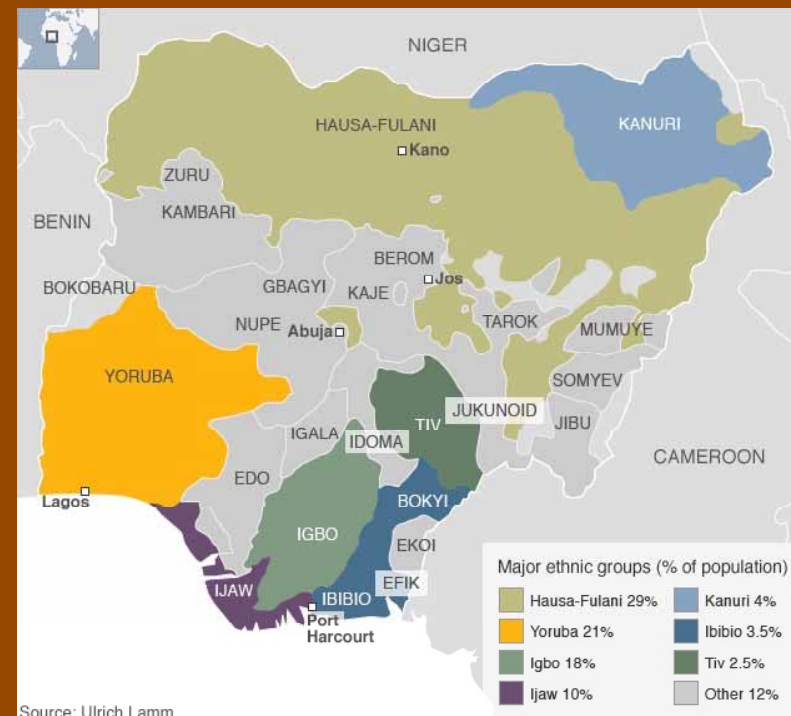


Tuesday, September 14

Above left: Veranda posts created by Olowe of Ise for the Ogoga's palace, Ikere, Nigeria, 1943. Below left: Bamum King Ibrahim Njoya receiving a visitor, Cameroon, c. 1914.



Above from left to right: Ife civilization (Nigeria), *Head of an Oni*, 12<sup>th</sup>-15<sup>th</sup> century. Zinc brass. Igbo-Ukwu civilization (Nigeria), *Shell form surmounted by an animal*, 9<sup>th</sup>-10<sup>th</sup> century. Leaded bronze. Ijebu/Yoruba culture (Nigeria), *Osun face bell*, 18<sup>th</sup>-19<sup>th</sup> century. Bronze. Right: Map of Nigeria's major ethnic groups.







Left: Yoruba peoples (Nigeria), *Eshu Dance wand*, 19<sup>th</sup> century. Wood, cowrie shells, beads, metal, cloth, leather. Center: Fon peoples (Republic of Benin), *Ifa Divination Tray*, late 16<sup>th</sup> century. Wood. Right: Owo civilization (Nigeria), *Ifa Divination tapper*, 18<sup>th</sup> century. Ivory.





Clockwise from lower left:  
 Yoruba peoples (Nigeria),  
*Twin figure (Ibeji)*, 20<sup>th</sup>  
 century. Wood, iron. Yoruba  
 peoples (Nigeria), *Deji of  
 Akure wearing beaded crown,  
 robe & sandals*, circa 1960s.  
 Yoruba peoples, Nigeria, *Staff  
 for Shango (Oshe Shango)*,  
 20<sup>th</sup> century. Wood. Yoruba  
 peoples (Nigeria), *Shango  
 shrine sculpture*, 20<sup>th</sup> century.  
 Wood, pigment. Yoruba  
 culture, Nigeria, *detail of an  
 Ibeji (twin) figure, showing  
 abaja markings*, 20<sup>th</sup> century.  
 Painted wood.

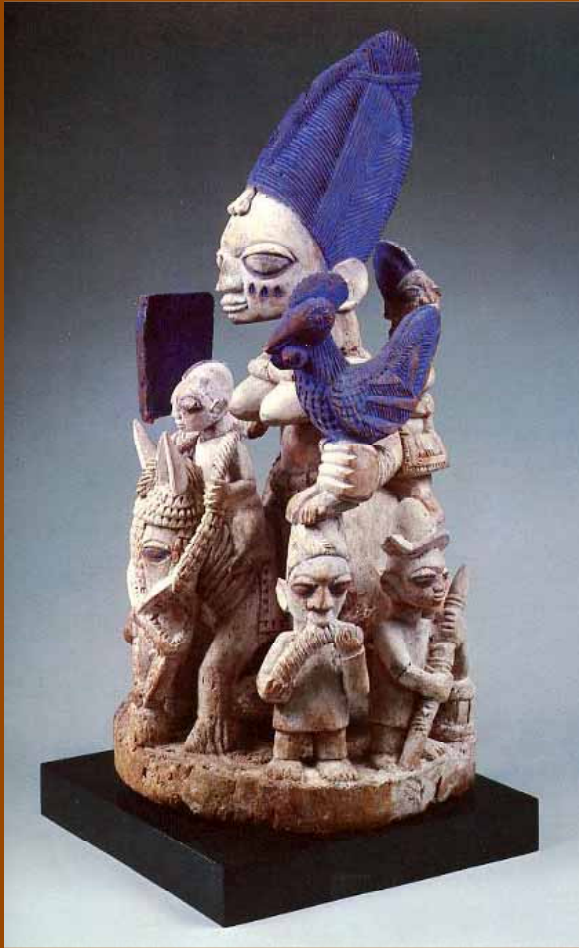


Left: Yoruba woman, Agbeke Asoko, dancing with crown of Erinyle, Ajilete, Nigeria, 1965. Center: Yoruba peoples (Nigeria), 2 views of a medicine staff for Osanyin (Osun), 20<sup>th</sup> century. Iron. Right: Yoruba peoples (Nigeria), Ceremonial Ax for Ogun (aringo jagun), early 20<sup>th</sup> century. Wood, metal.



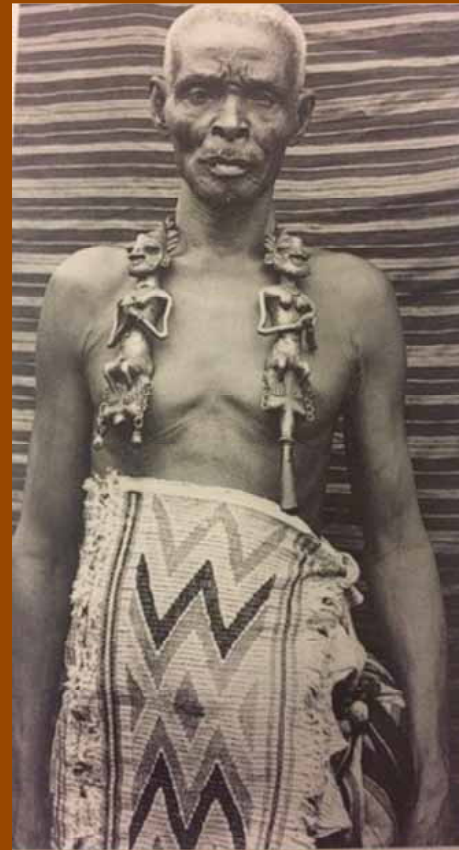
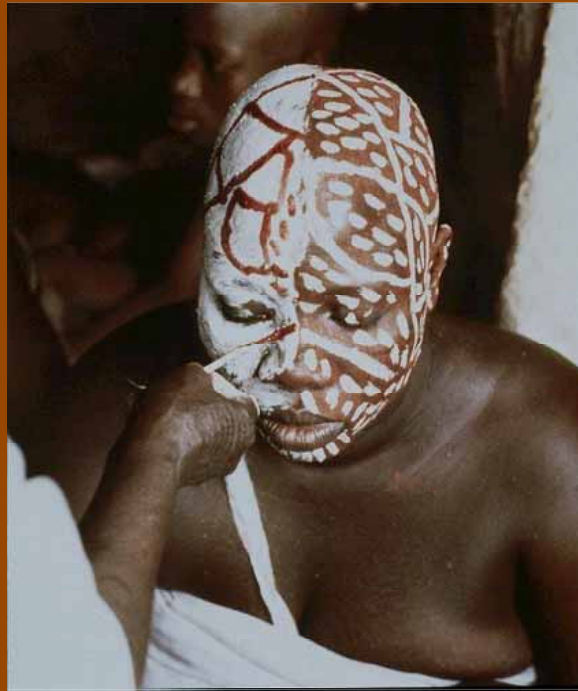


Left: Yoruba peoples (Nigeria), *Shrine sculpture for Sopona*, 20<sup>th</sup> century. Wood, beads, shells, straw, hair, monkey skull. Center: Fon peoples (Republic of Benin), *Shrine for Sakpata, Abomey*, 20<sup>th</sup> century. Right: Devotee of Nana Bukuu holding her dance wand (ileesin), Republic of Benin, 1960s. Straw, beads, leather, chicken feet.



Clockwise from lower left: Yoruba peoples (Nigeria), *Fan for Yemoja*, 20<sup>th</sup> century. Brass. Yoruba peoples (Nigeria), *Oya Shrine Sculpture*, early 20<sup>th</sup> century. Wood, pigment. Areogun (Yoruba artist), *Epa Mask, "The Owner of the Deep Set Eyes" (Olójú Foforo)*, Surmounted by a Figure of the Priestess of the Goddess Òsun, early-mid 20<sup>th</sup> century. Wood, pigment, string, and fiber. Yoruba peoples (Nigeria), *Shrine sculpture with Òsun devotee*, early 20<sup>th</sup> century. Wood, pigment.



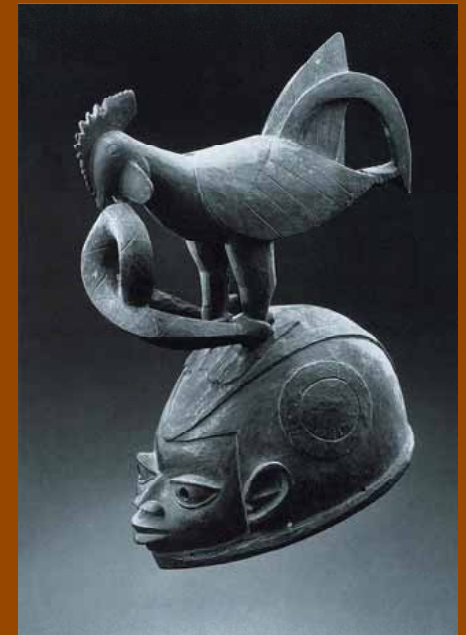


Clockwise from lower left: Obatala devotees at the Itapa festival, Ile Ife, Nigeria, 2015. Yoruba initiate being decorated with red and white pigment, Nigeria, 20<sup>th</sup> century. A Yoruba ogboni wearing edan, Nigeria, 20<sup>th</sup> century. Yoruba peoples (Abeokuta, Nigeria), *Multi-figure sculpture for an Ogboni shrine*, 20<sup>th</sup> century. Wood, pigment.





Upper and lower left: Yoruba peoples (Abomey, Republic of Benin), *Egungun masqueraders*, 2012. Above: Yoruba peoples (Ketu, Republic of Benin), *Gelede masqueraders*, 2016. Right: Duga (Yoruba artist from Meko, Nigeria), *Gelede helmet mask*, 20<sup>th</sup> century. Wood, pigment.





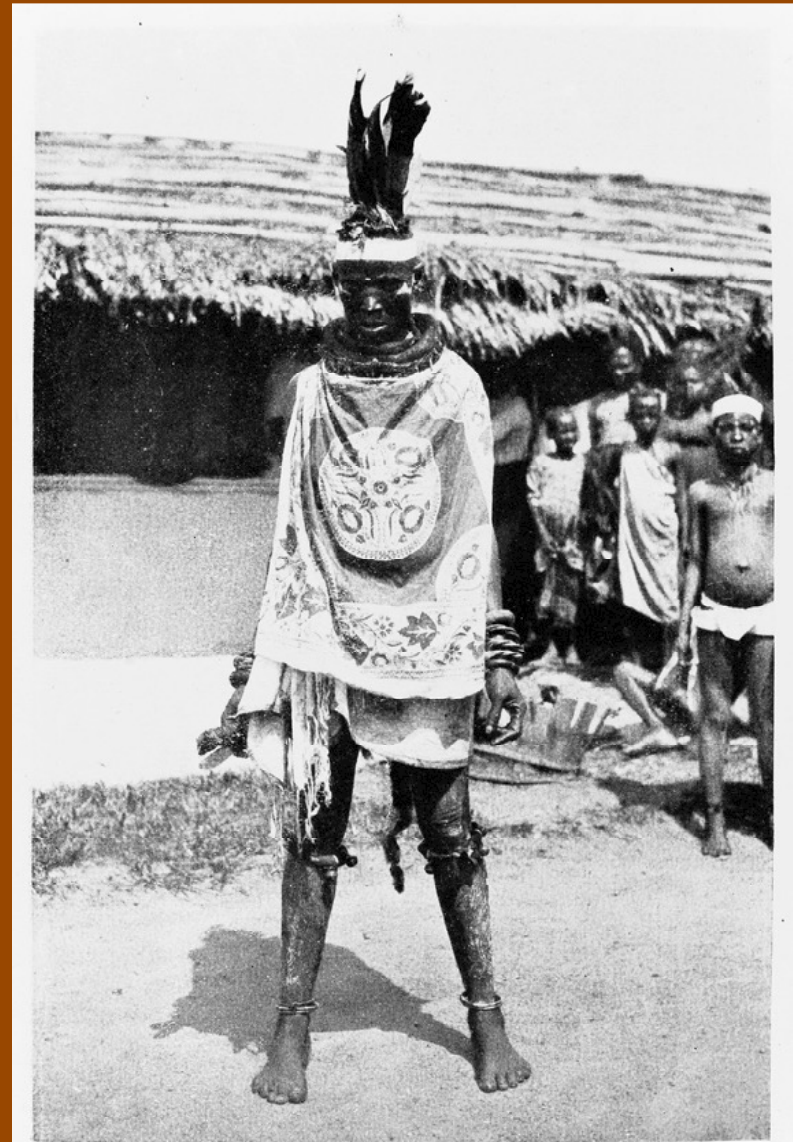
Left: Igbo peoples (Nigeria), *Ikenga shrine sculpture*, 20<sup>th</sup> century. Wood, pigment. Right: Igbo peoples (Nigeria), *Maiden spirit mask*, 20<sup>th</sup> century. Wood, pigment.





Left: Ijo peoples (Nigeria), *Ancestral screen*, 19<sup>th</sup> century. Wood, cane, pigment. Right: Ejagham peoples (Nigeria), *Emblem (nkpa) of the Leopard Spirit Society*, 19<sup>th</sup> century. Wood, animal skulls, plant fiber, iron, pigment.





The Head Priestess of "Nimm."

Left: Ejagham peoples (Nigeria), Photo of an Ekpe (or Men's Leopard Secret Society) masquerader, early 20<sup>th</sup> century. Right: Ejagham peoples (Nigeria), Photo of a priestess of Nnimm (or the Women's Secret Society), early 20<sup>th</sup> century.



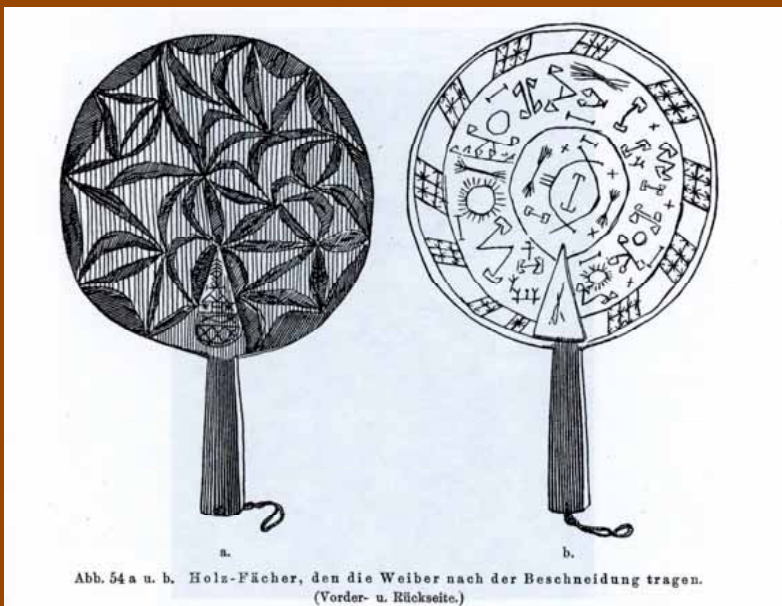
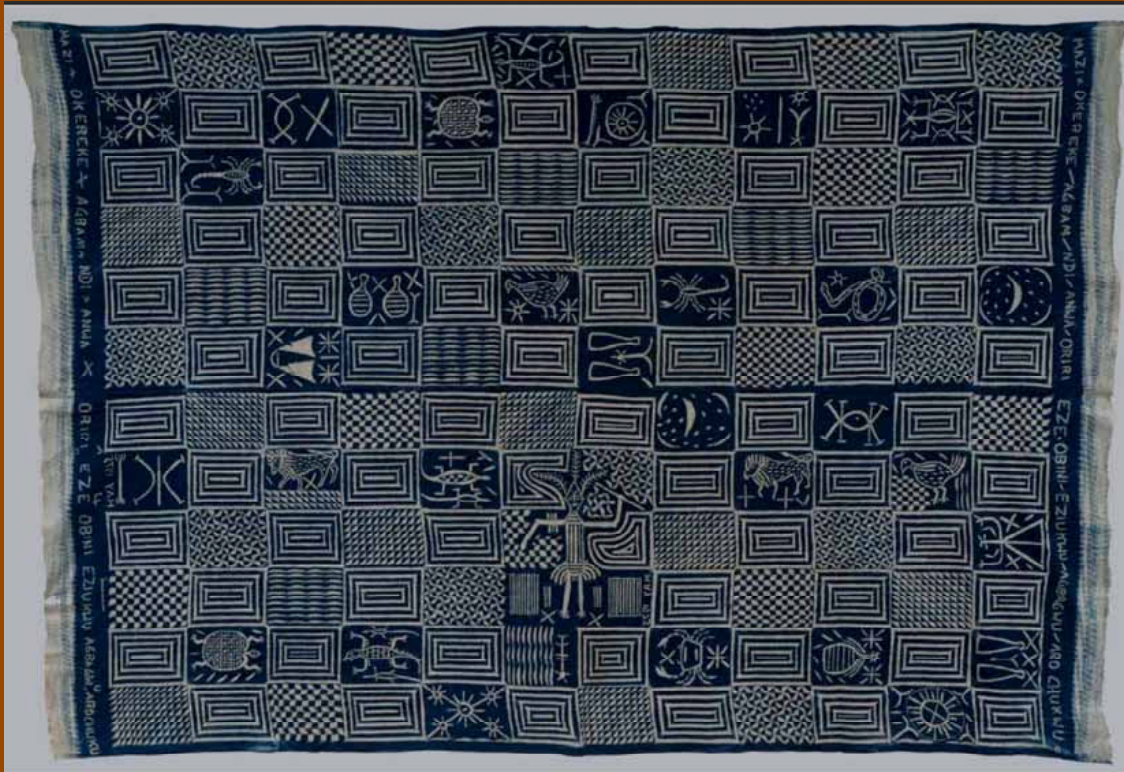


Left: Ejagham peoples (Nigeria), Ekpa-Nkim Women Masqueraders, 2000. Right: Elliot Elisofon, Photo of Ekpe Men's Leopard Secret Society masqueraders, Big Qua Town, Nigeria, 1959.



Left: Ejagham peoples (Nigeria), Egbo Men's Leopard Secret Society, early 20<sup>th</sup> century. Right: Phyllis Galembo, Photo of Akata Dance Masquerader, Nigeria, circa 1990s.



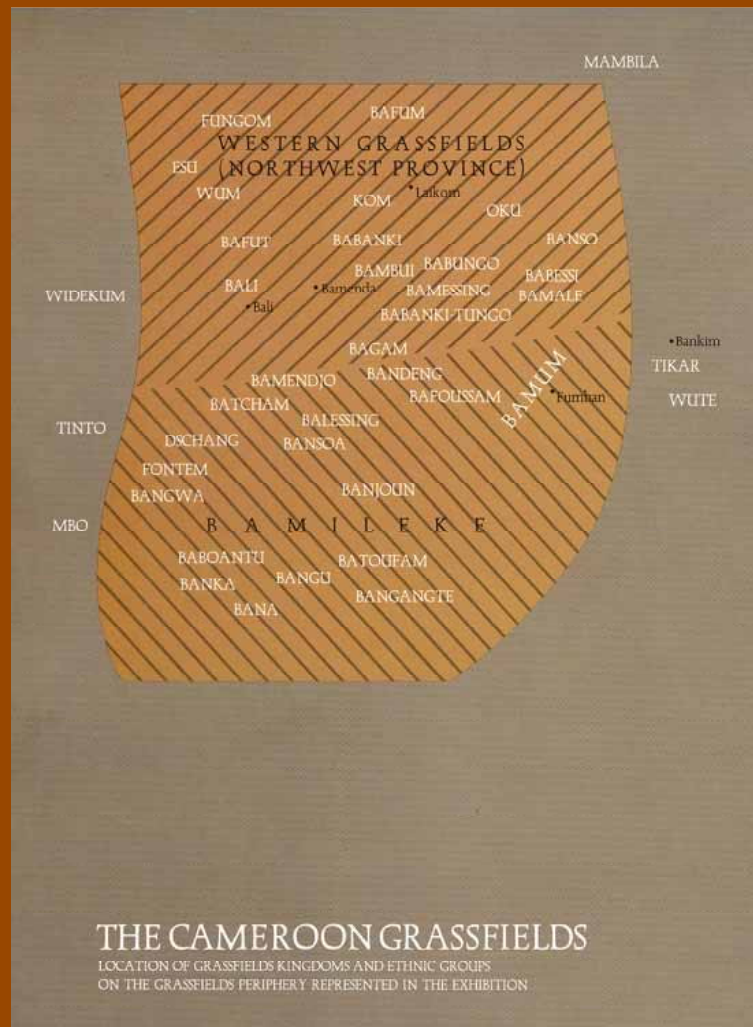


Clockwise from lower left: Efik/Keaka peoples (Nigeria), *Fan with nsibidi writing*, acquired 1909. Igbo peoples (Nigeria), *Ukara cloth*, 1972. Cotton, indigo dye. Ejagham peoples (Nigeria), *Helmet mask*, acquired 1942. Wood, animal skin, bone.

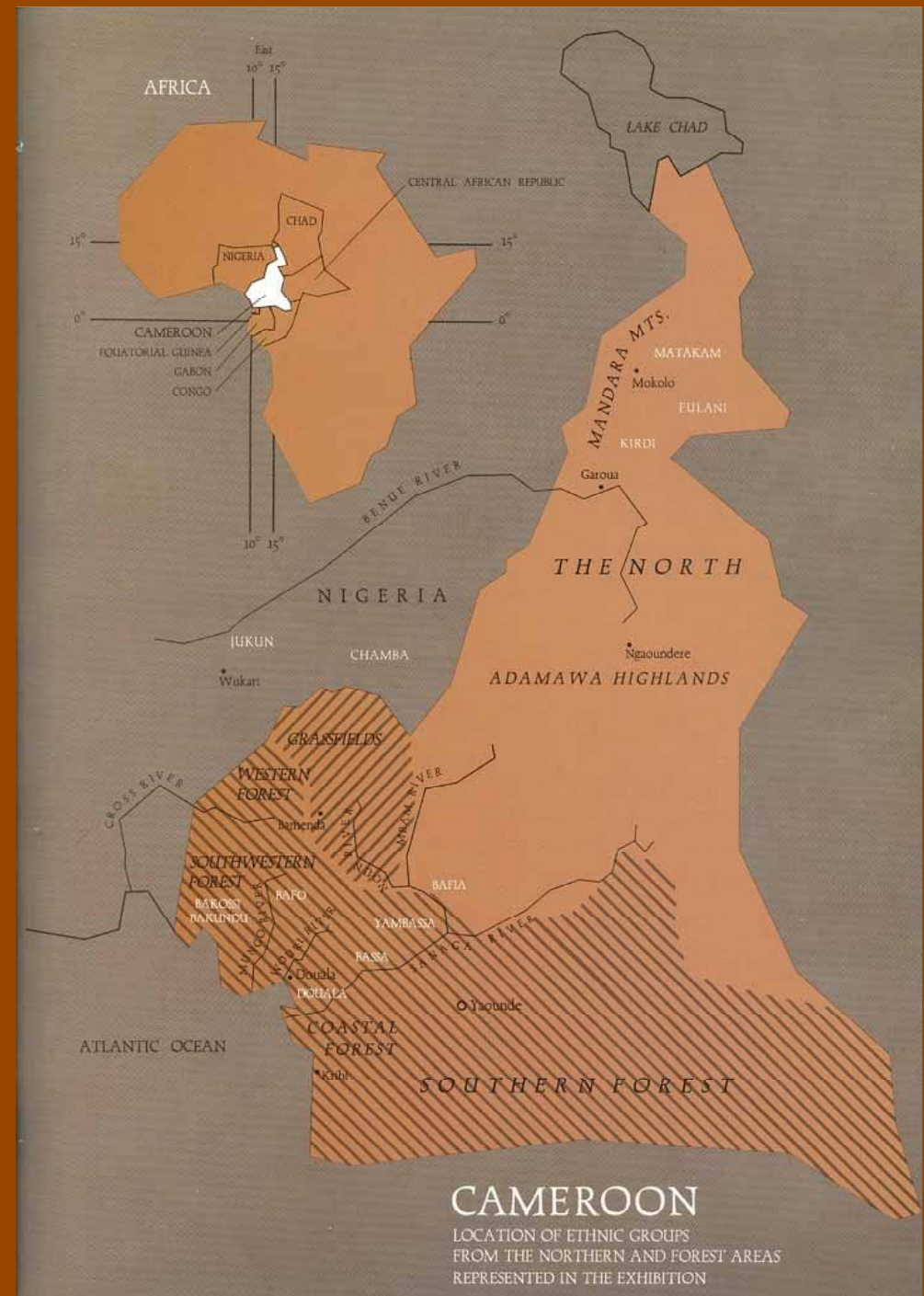


Efik peoples (Nigeria), *Crest mask*, early 20<sup>th</sup> century. Wood, animal skin, plant materials, bone, natural dye.





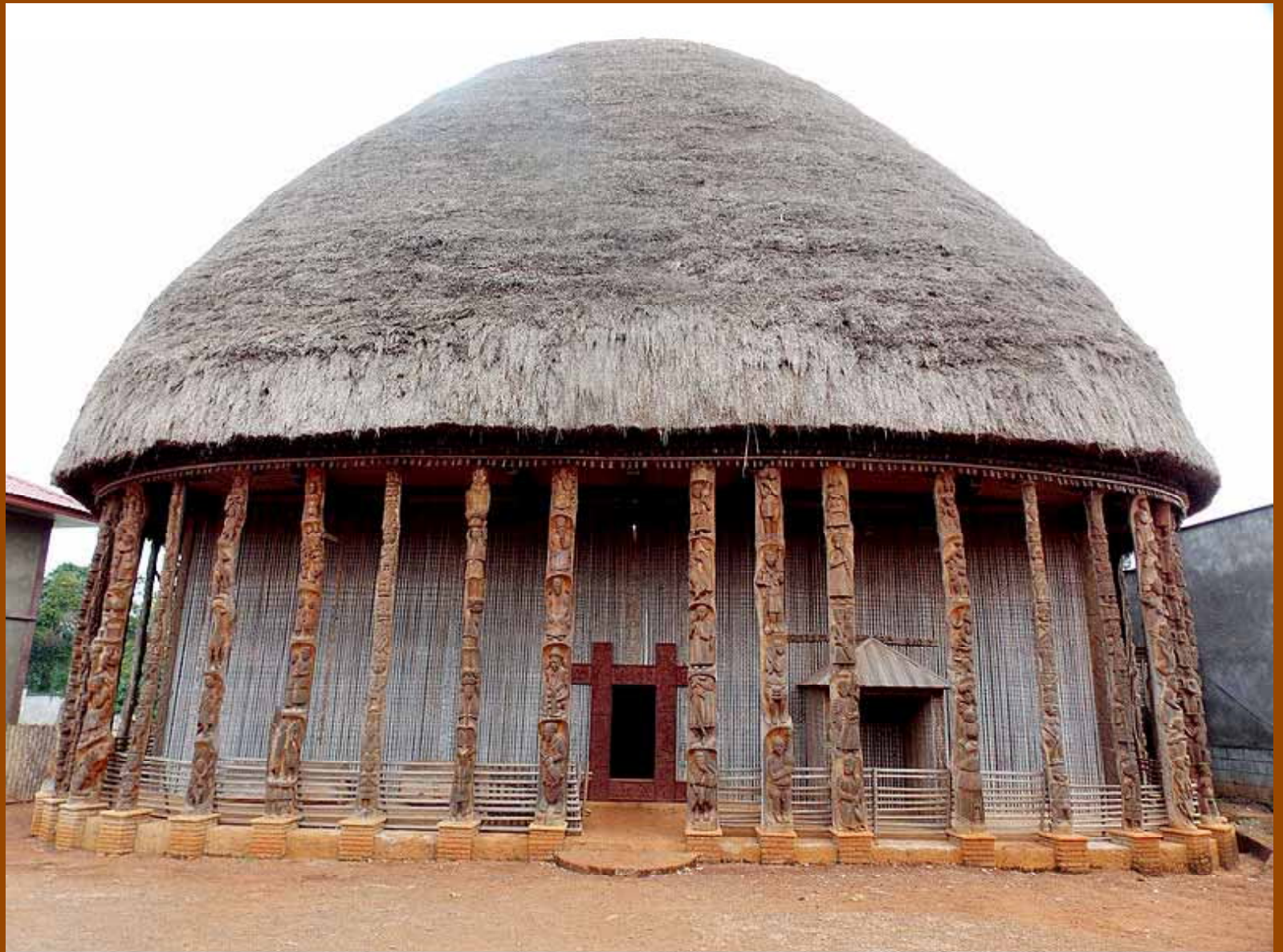
Above: Map of Cameroon Grasslands kingdoms & ethnic groups. Right: Cameroon & locations of cultural regions.





Bamum Kingdom (Cameroon), *King's traditional palace & compound*, 1920s. Wood, bamboo, raffia.





Bamileke Kingdom (Bandjoun) (Cameroon), *King's Palace*, early 20<sup>th</sup> century. Wood, bamboo, raffia.



Mousgoum peoples (Cameroon), *Teleuk house*, 20<sup>th</sup> century. Adobe.





Above: Photograph of Bamum ruler, King Njoya, with soldiers holding *ndop* textile, Cameroon, 1908. Right: Bamum Kingdom (Cameroon), *Buffalo masquerade*, 19<sup>th</sup> century. Wood, feathers, burlap, string.





Above: Kom peoples (Cameroon), *Mask*, late 19<sup>th</sup>-early 20<sup>th</sup> century.  
Wood, Right: Bamileke peoples (Cameroon), *Elephant mask with  
Leopard Crest*, 19<sup>th</sup> century. Raffia, cloth, beads.







Bamileke peoples (Cameroon), *Mask (tsesah)*,  
19<sup>th</sup> century. Wood.

Above & below right: Bamileke peoples (Cameroon), *Royal Stool with Leopard-Elephant caryatid*, late 19<sup>th</sup> century. Wood & tinfoil.







Left: Bamum peoples (Cameroon), *Afo-a-kom sculpture*, 19<sup>th</sup> century. Wood, beads, cloth. Center: Bangwa peoples (Cameroon), *Statue of a Mother of Twins*, 19<sup>th</sup> century. Wood. Right: Man Ray, *Bangwa Queen with unidentified model*, Paris, France, 1937. Gelatin silver print.