



Transforming the Research Administration Process

Cathy Eberts: Director Enterprise Applications, University of Toronto

Robert Dirstein: President, DCI

HERUG 2016, Session R2



DIRSTEIN CONSULTING INC.



Outline

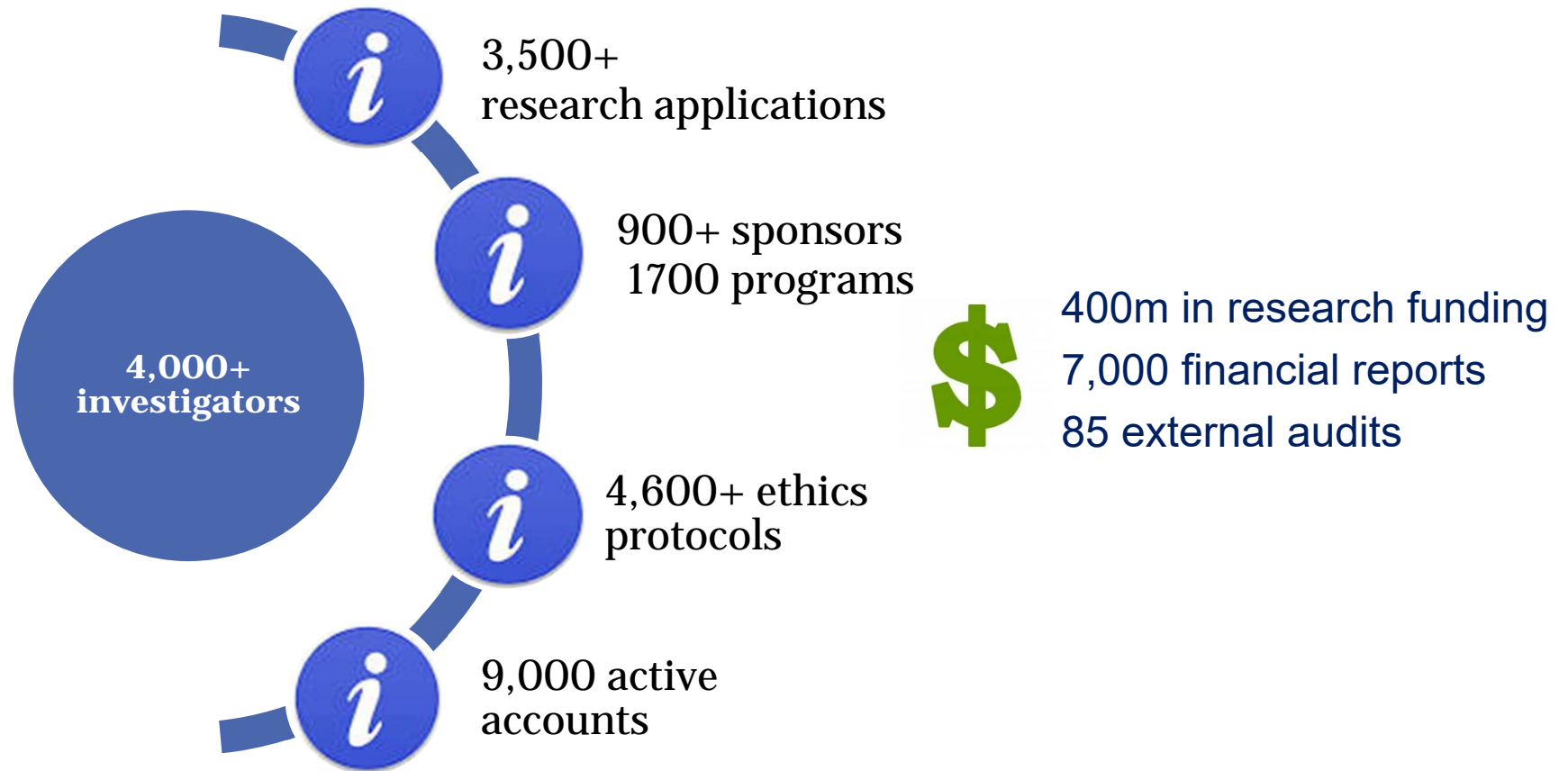
- Background
- Vision and conceptual design
- More Detail ...
 - Reimagining our business processes
 - Demonstration
- Results
- Questions

The University of Toronto

- 5,000 research faculty
- 84,000 students on three campuses
- 9 hospital partners
- 134 research admin units
- \$1.1 billion in research funding



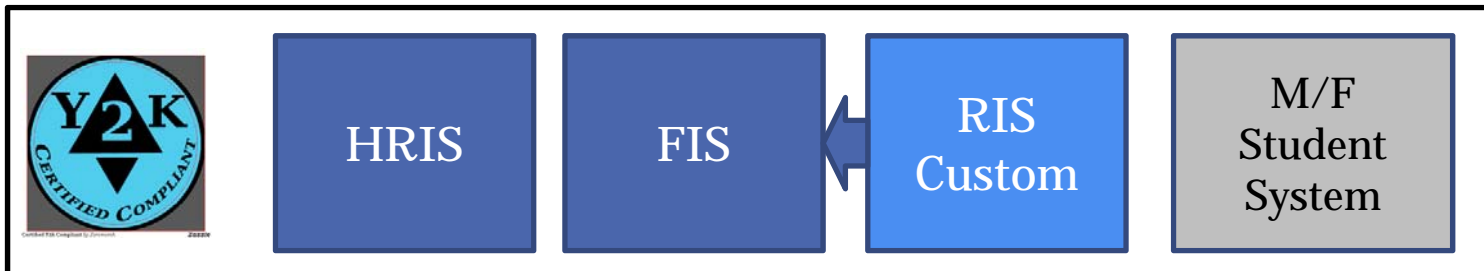
Scale and Complexity



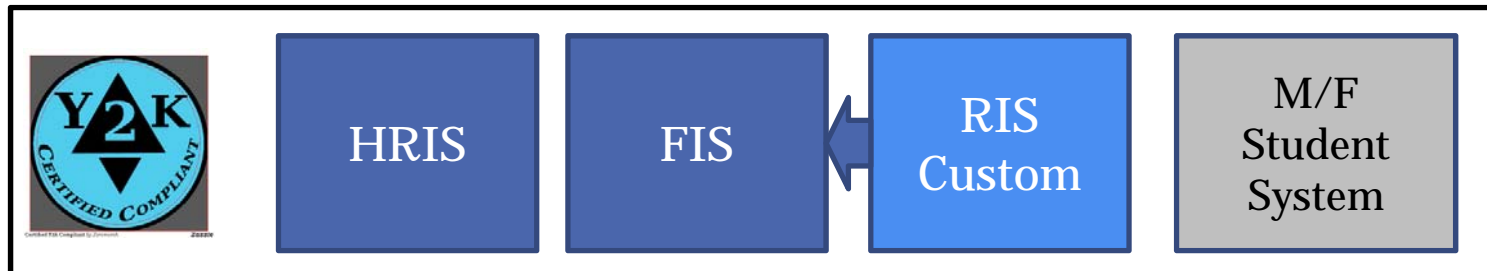
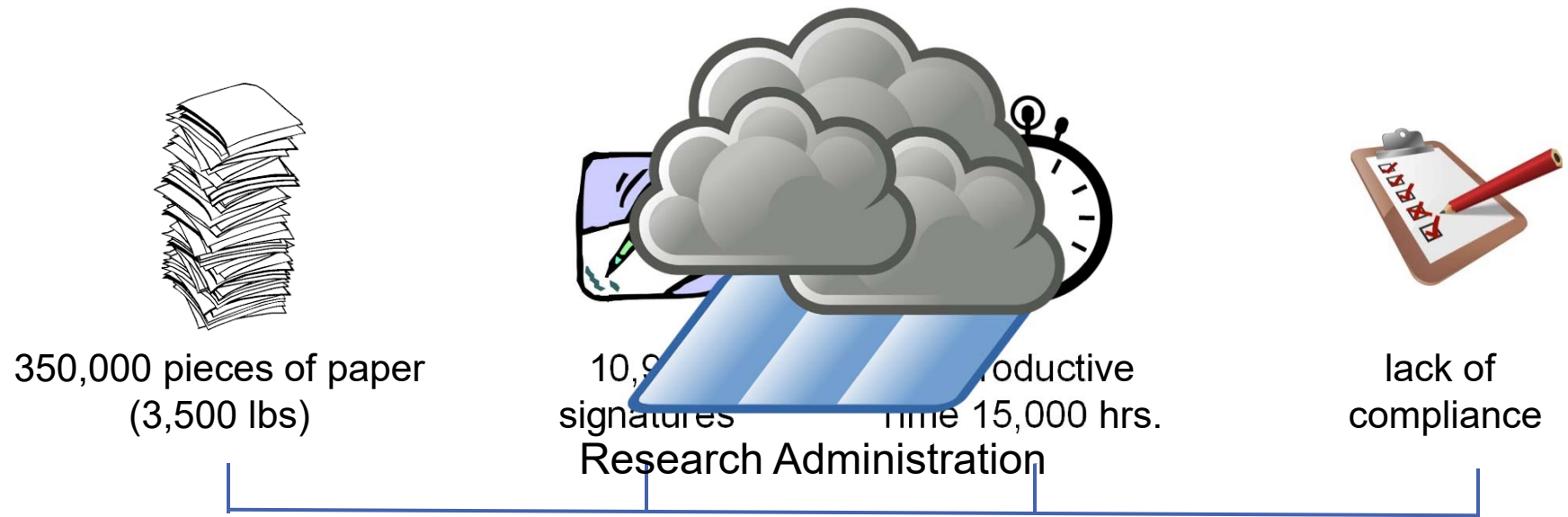
The way we were....

It was 1995 ...

and it was good for
a very long time...

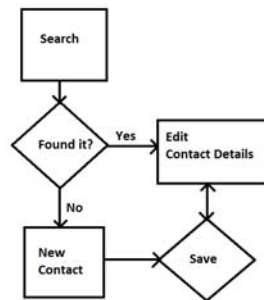


But as the years rolled along....

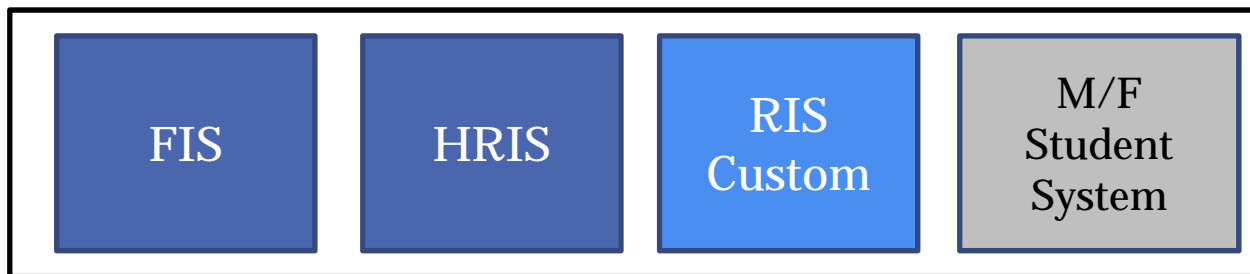




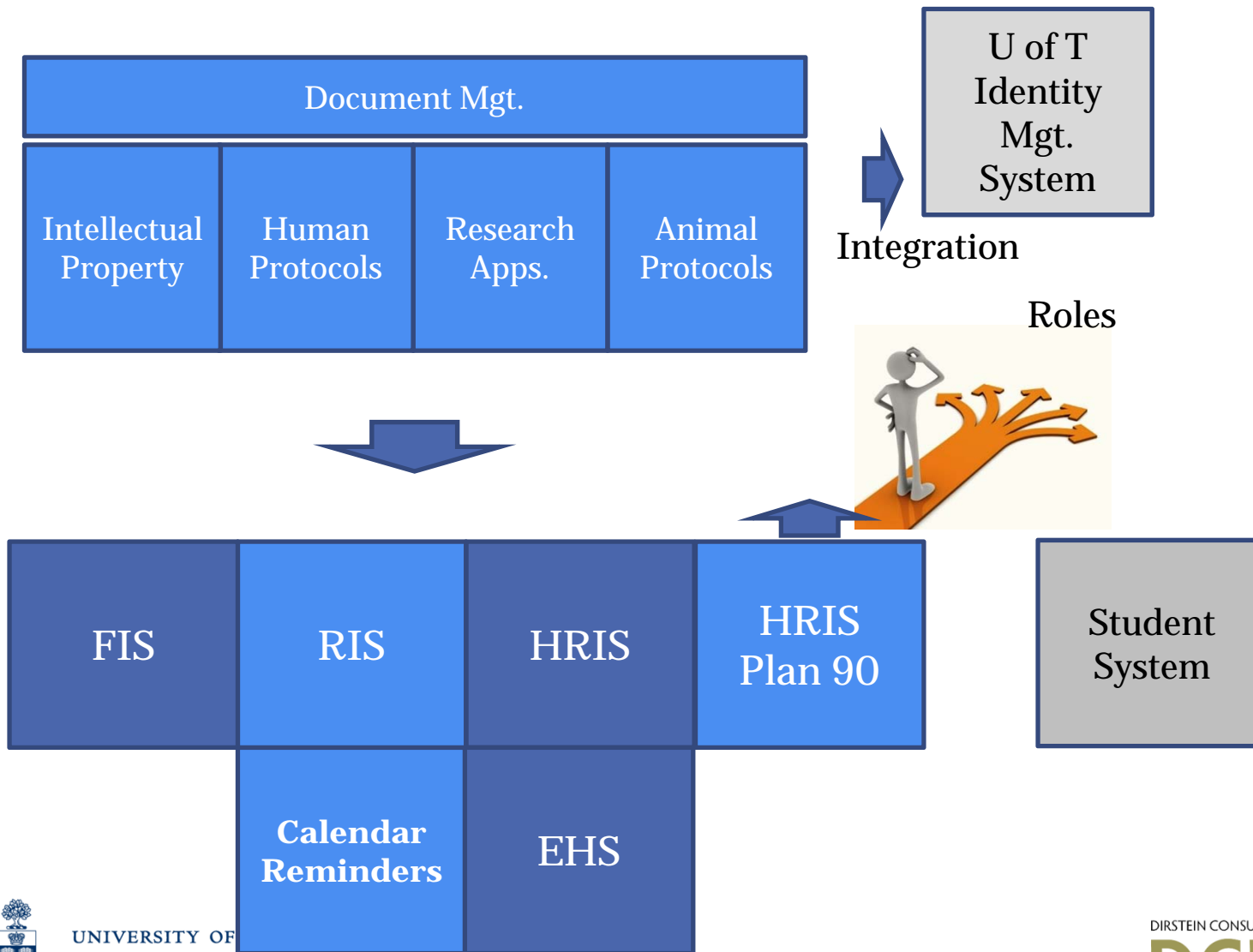
Our Vision 2015+



- My research applications
- My animal protocols
- My human protocols
- My intellectual property



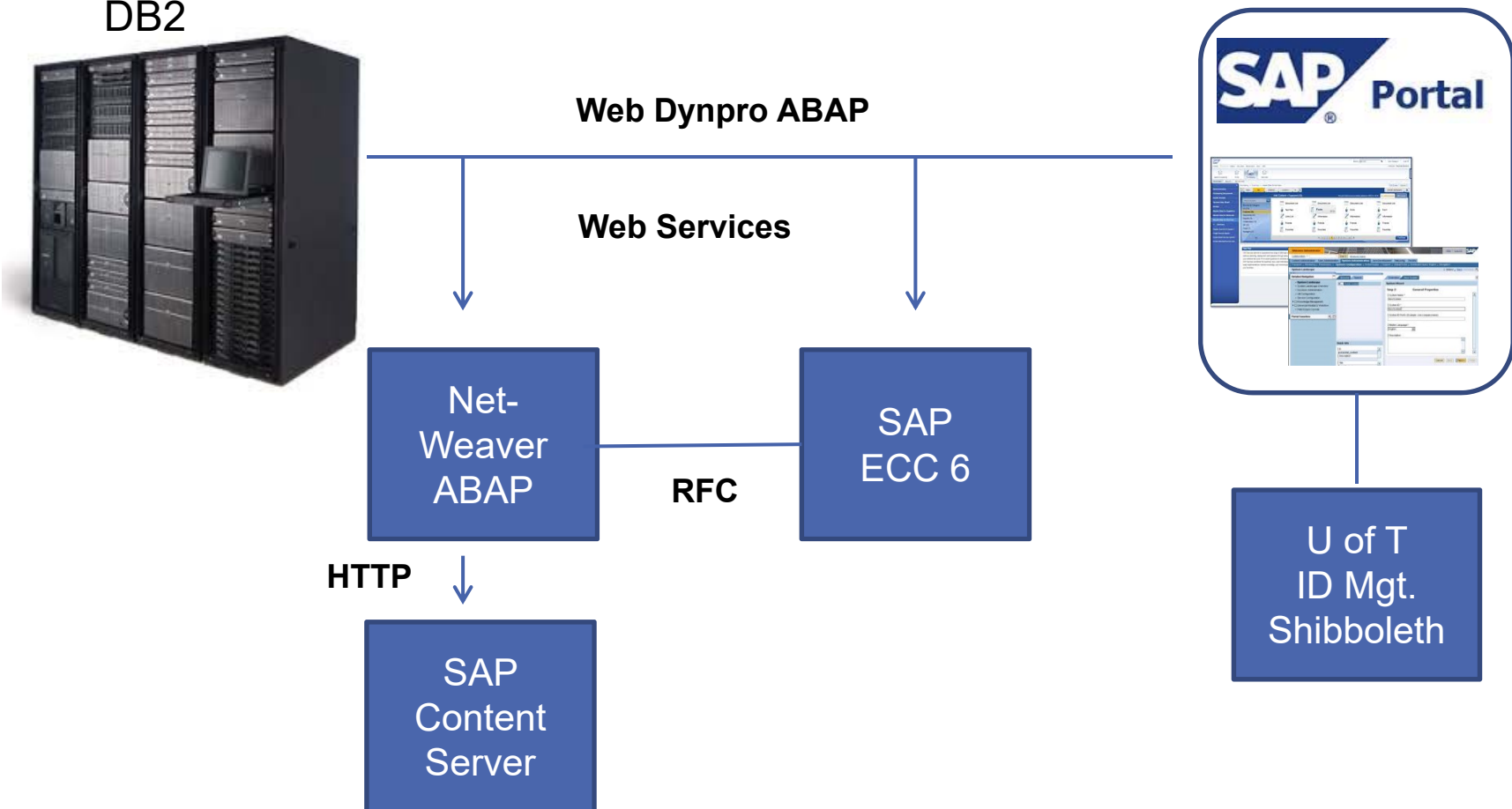
Conceptual Design



On a more technical level ..

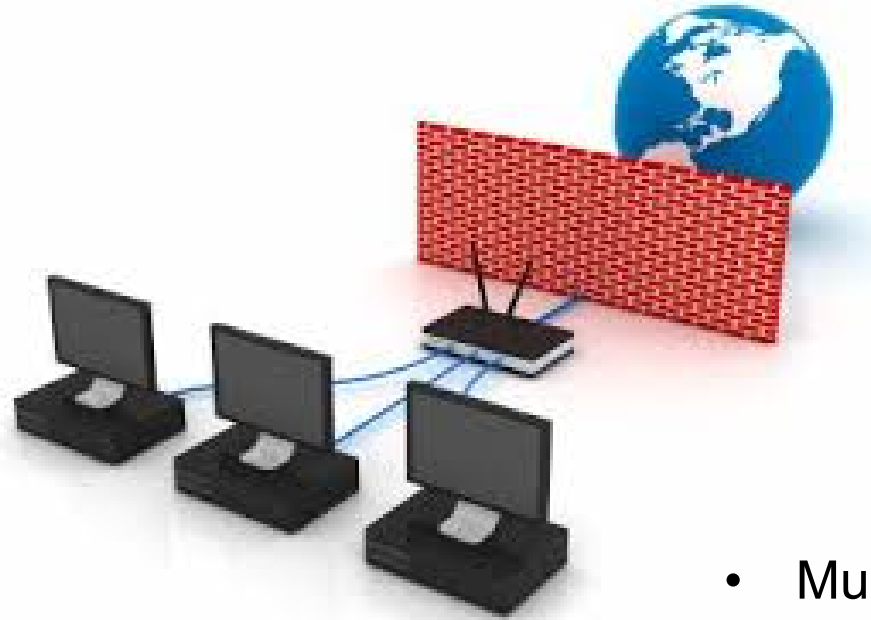
IBM AIX
DB2

SAP NetWeaver Java



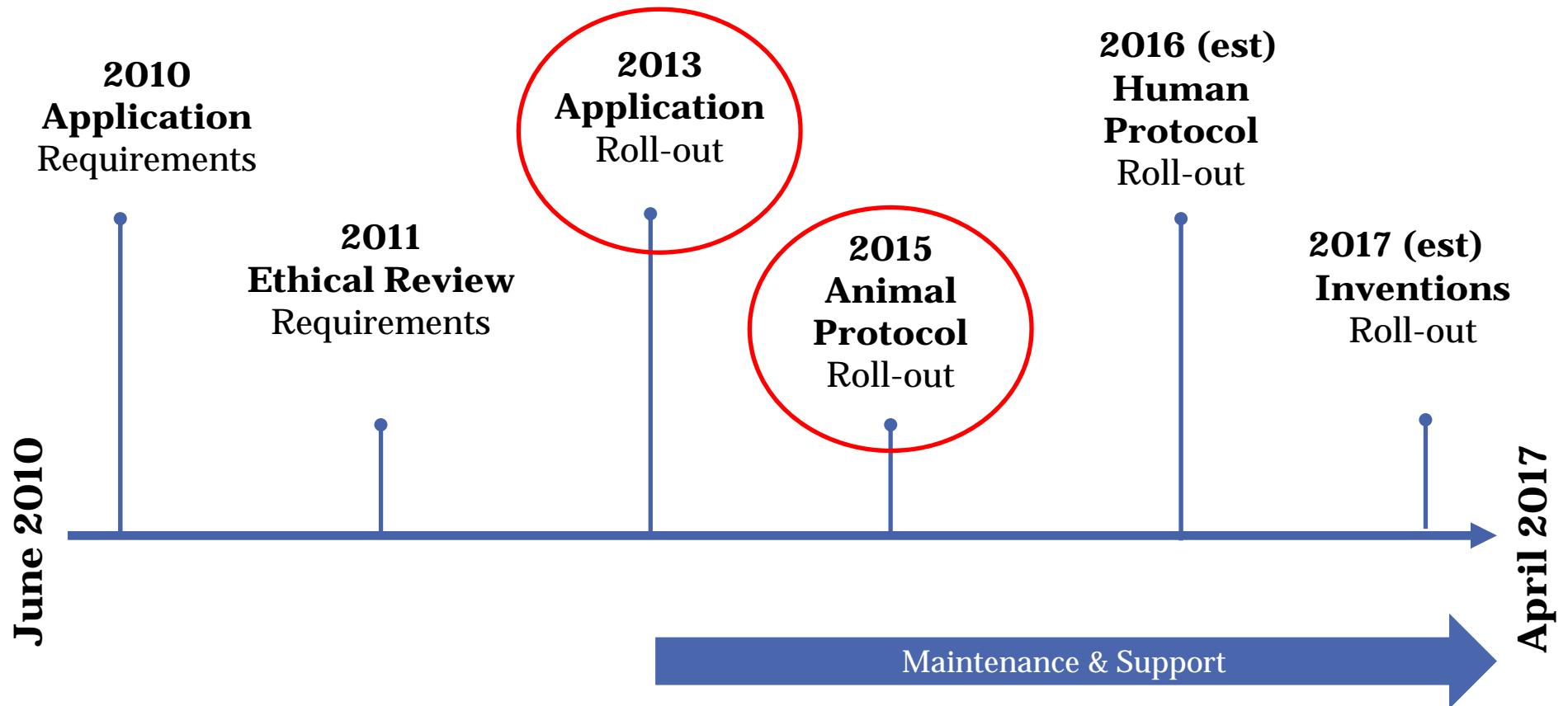
Clockwork Consulting

Security



- Multiple firewall protection
- Utilizes https protocol
- Access based on role
- SAP ID linked to Shibboleth
- 2-factor authentication for high security roles!

Our Journey ...



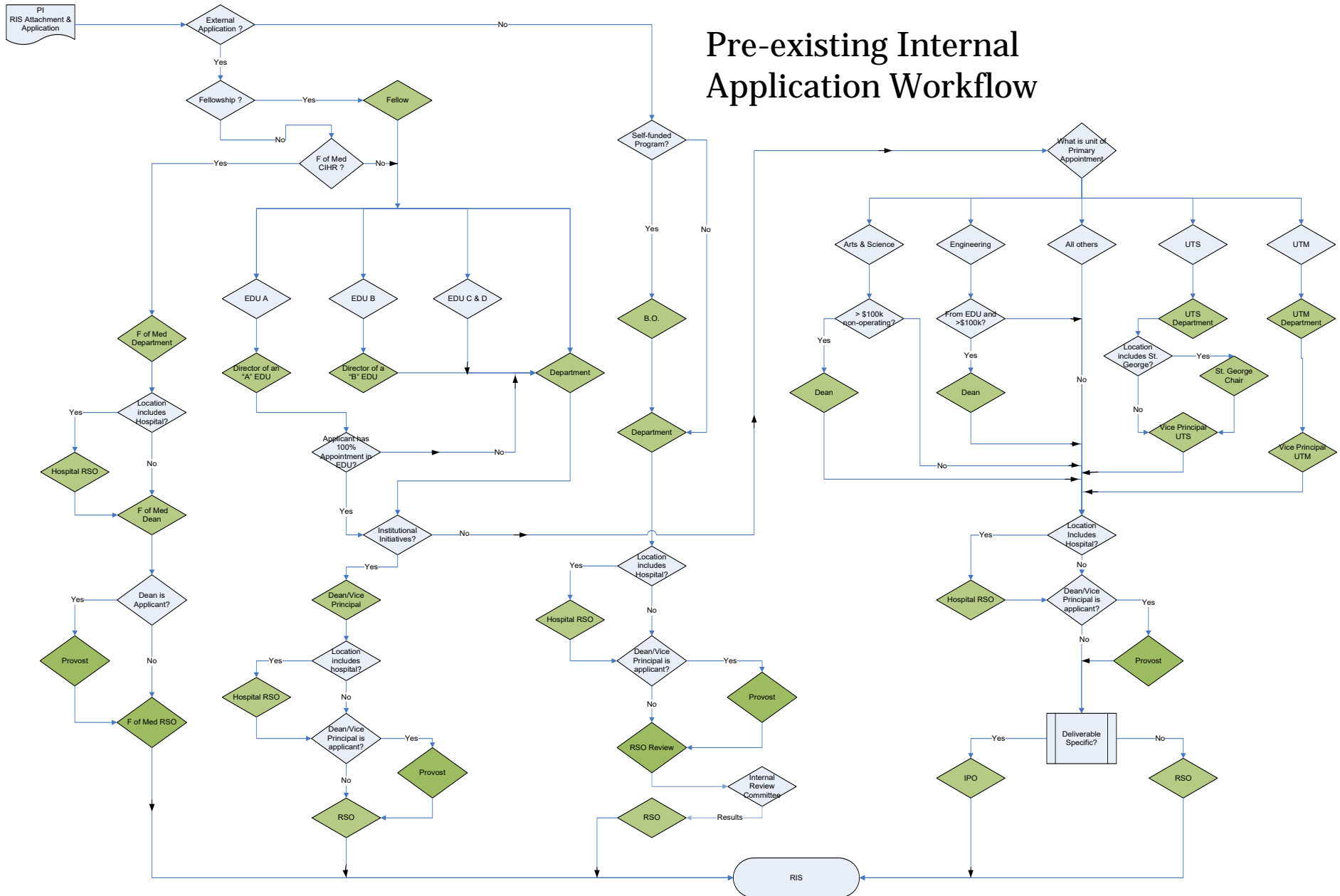
Reimagine our business processes



Old Process – Paper Based – Relied on PI Files and Memory

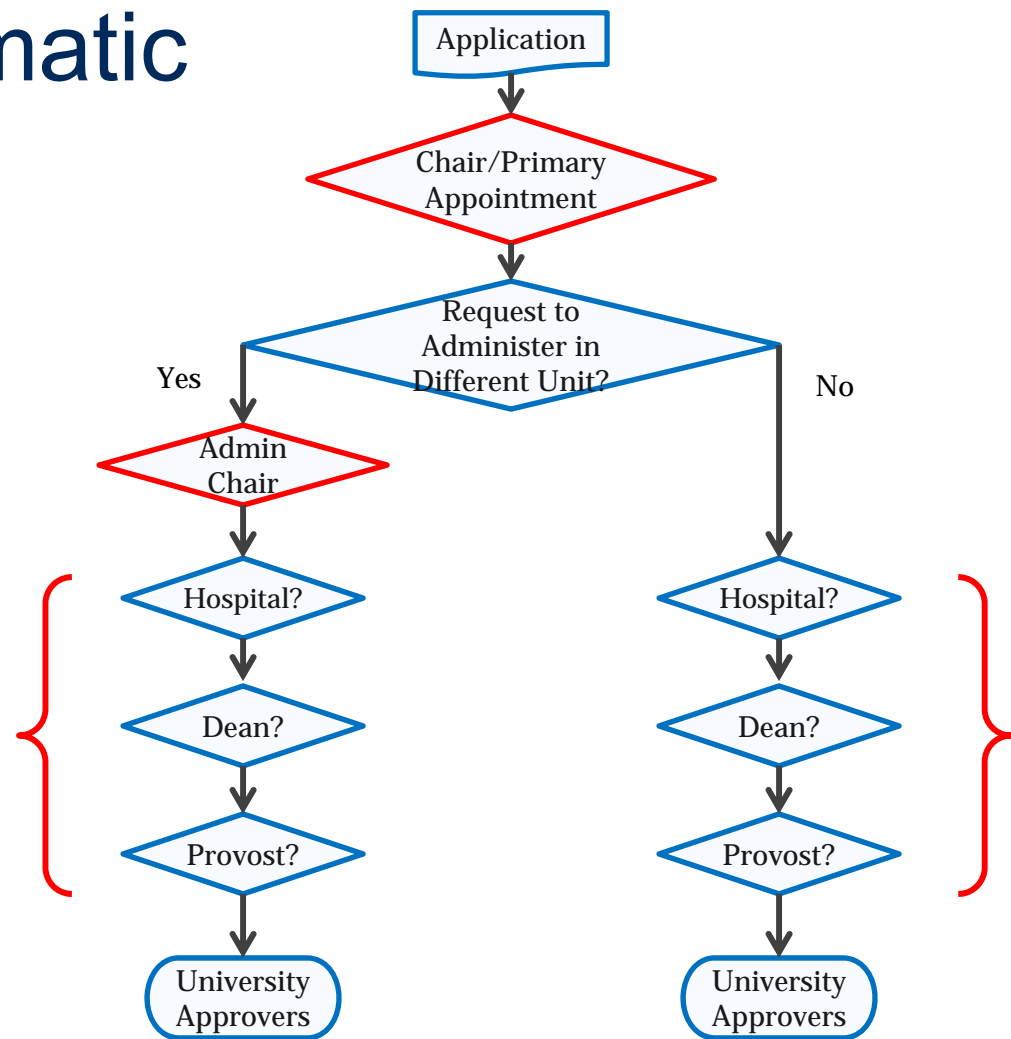


Pre-existing Internal Application Workflow

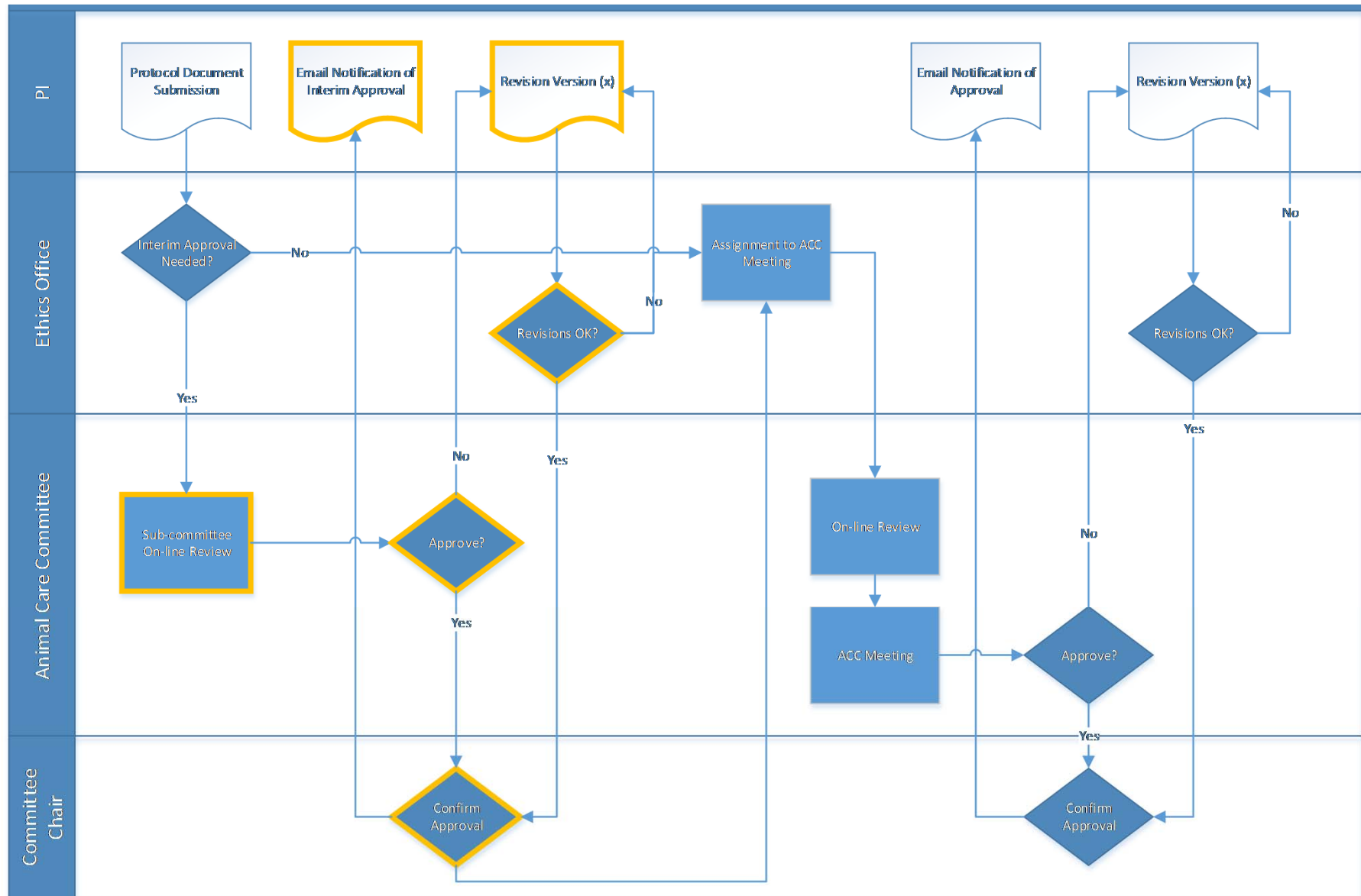


Approval Schematic

- Assistant may prepare and forward to PI
- PI submits goes to Chair/Director of Unit of Primary Appointment
- Request to Administer in a different unit?
 - No
 - Yes
- Other Approvals required based on escalation rules



Animal Protocol Process (Simplified)



How: Plan 90 - Custom HR Objects:

**HRIS
Plan 90**



- All roles
- University Approver Groups
- Affiliated Hospitals
- Hospital Research Offices
- Divisional Research Offices
- Animal Care Committees
- Animal Care Panels
- Research Ethics Boards
- Research Ethics Panels
- Animal Facilities

Bold=Derived, *Italics*=Designated, Red = Sys Admin

MRA Roles (# of users)	MRAP Roles (# of users)	MRHP Roles (est. #)
PI (4094)	Animal PI (Faculty & External) (223)	Faculty Applicant/Collaborators & External (4094)
<i>PI Assistant (199)</i>	<i>PI Assistant (Staff & Student) (35)</i>	Supervisor
Co-PI/Collaborator (4055)	<i>Research Assistant (10)</i>	<i>Student (UG/G/PDF) (2000)</i>
Departmental Chair (111)	Quality Assurance Officer (VPRI) (2)	<i>PI Assistant</i>
<i>Alternate Chair (47)</i>	Research Ethics Director (VPRI) (1)	<i>Student PI Assistant</i>
<i>Dept. Business Officer (56)</i>	Research Ethics Manager (VPRI) (2)	Departmental Chair (111)
Hospital Approver (25)	<i>Committee/Panel Member (58)</i>	<i>Alternate Chair</i>
Hospital RSO Staff (13)	<i>Committee Chair (5)</i>	Dean (20)
Dean (23)	Administrative Head (2)	<i>Alternate Dean</i>
<i>Alternate Dean (26)</i>	Facility Manager (4)	Provost (1)
<i>Divisional RSO Staff (25)</i>	<i>Facility Staff (27)</i>	<i>Alternate Provost</i>
Provost (1)	Facility Veterinarian (4)	Quality Assurance Officer (VPRI) (3)
<i>Alternate Provost</i>	Training Manager (10)	Research Ethics Director (VPRI) (1)
<i>Provost's Assistant</i>	System Administrator (4)	Research Ethics Manager (VPRI) (3)
Approvers (VPRI) (35)	Data Manager	<i>Board/Panel Member (65)</i>
Managers (VPRI)	Auditor (1)	<i>Board Chair (3)</i>
Research Accts. (VPRI) (1)		Training Manager (VPRI)
Controlled Goods (VPRI) (1)		System Administrator (3)
System Administrator (VPRI) (3)		Data Manager
Commercialization Officer (VPRI) (1)		Auditor
Data Manager (4) Auditor (5)		

Demonstration




Visit the [Helpline](#) for system availability, extended hours prior to major deadlines and planned maintenance downtime.

My Research - TEST SITE

[My Research Helpline](#)

Mon - Fri 9:00 a.m to 5:00 p.m.

 416.946.5000 | raise@utoronto.ca


[Supported Browsers](#)

[Training Schedule](#)

[User Guide](#)

Login to My Research Test Site

© 2014 University of Toronto

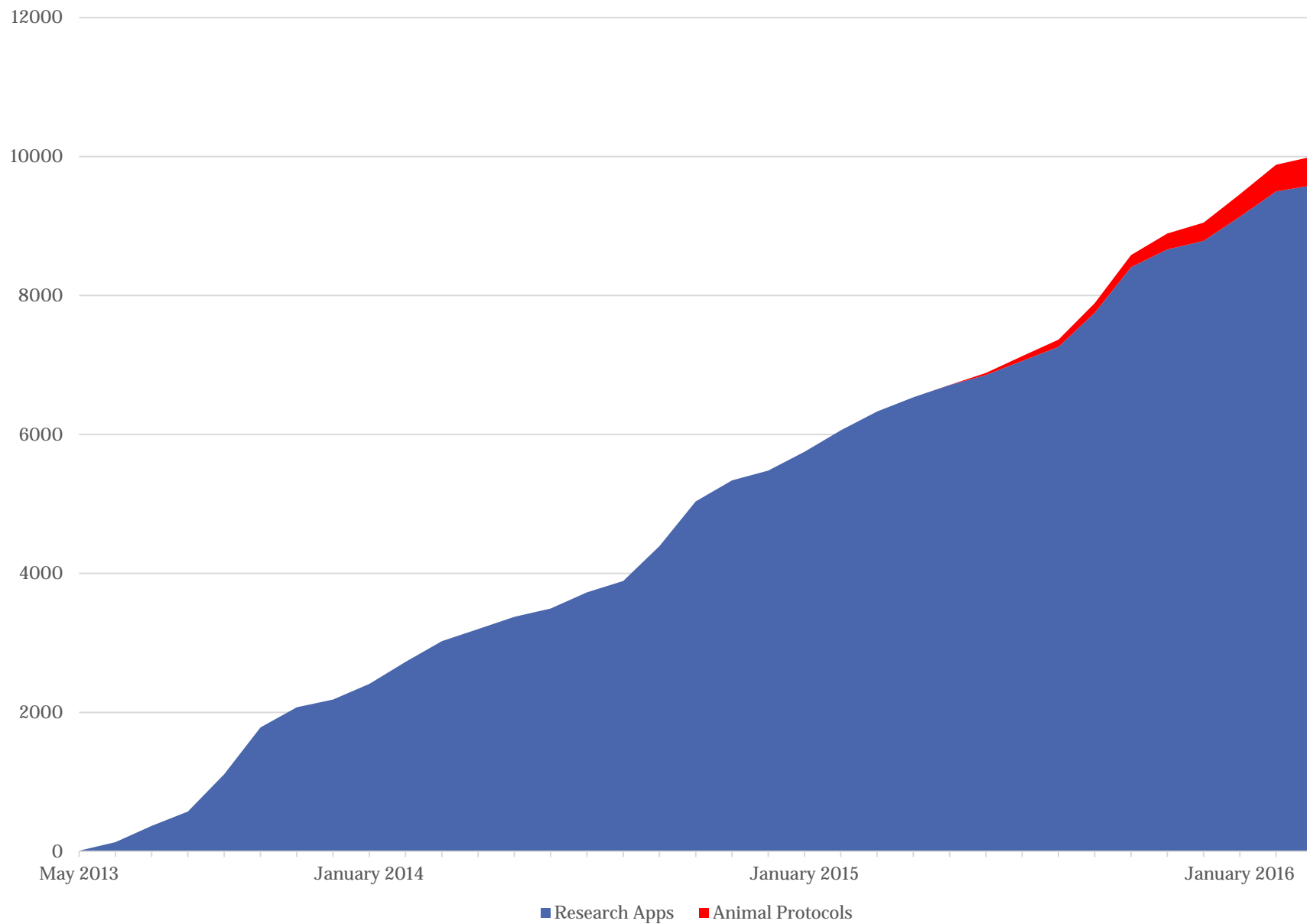
www.utoronto.ca | [Contacts](#) | University Switchboard:  (416) 978-2011

[University of Toronto, 27 King's College Circle, Toronto, Ontario, Canada M5S 1A1](#)

Results....



Cumulative # of Documents Processed



Current Impact

Time:

- Faculty/Grad Students/Assistants: ~ **6000 hours saved annually** (due to electronic approvals & clearly identified approval hierarchy)
- Central Research Staff: **1,000 hours saved annually** (eliminated manual data entry, photocopying, filing etc.)

Paper:

- **1.75 tons** of paper applications and ethical protocols eliminated

Institutional Reputation:

- Enhanced compliance with U of T and sponsor policies, greater accountability, and improved records management
- A clearer, simpler, more efficient means of obtaining institutional endorsement on research applications for our faculty

<http://www.research.utoronto.ca/about/project-raise/>

Key Success Factors

Improvements for
All stakeholders



CIO – VPRI
partnership



Extensive consultation



Dedicated

- U of T
- DCI
- Clockwork



Processes defined
prior to development

Bumps/Lessons Learned



- Browser Issues – support/testing
- Password confusion (we have too many!)



- Incorrect routing due to HR data quality issues
- Pls often thought application was sent to sponsor
- Not everyone embraces transparency & accountability

Communication



- Researchers do not read instructions, watch training videos or attend workshops!
- Have live support on-hand to target issues as arise

Thank you!

Contacts:



Cathy Eberts: cathy.eberts@utoronto.ca



Bob Dirstein: bobdirstein@gmail.com



Glenn Holdbrook: glenn.holdbrook@clockwork.ca