

**Weill Cornell
Medicine**

JOURNEY TO SAP HANA ENTERPRISE CLOUD



Harish Chava
Associate Director

Agenda

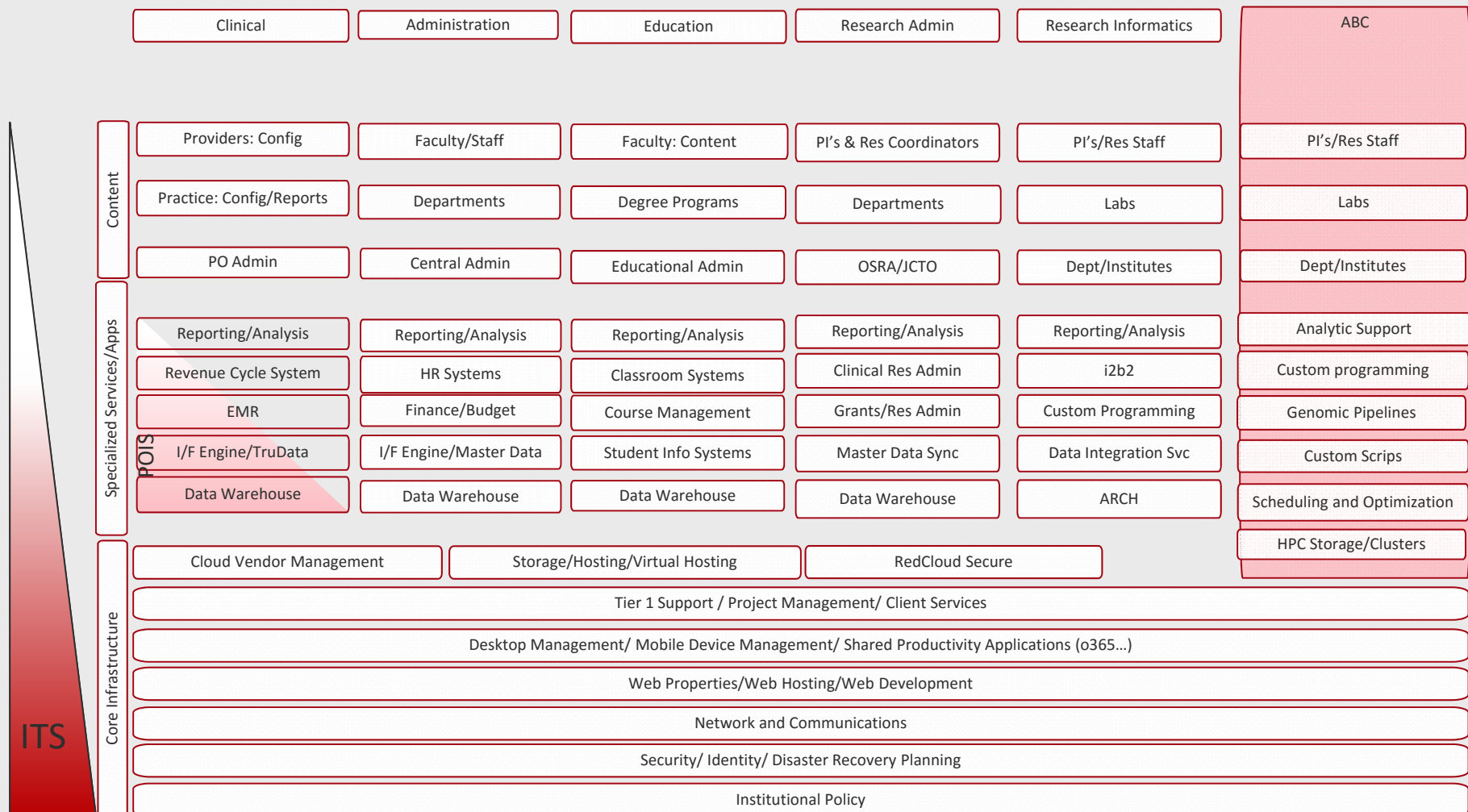
- About Weill Cornell Medicine
- WCM SAP System Landscape
- Why HANA & Why SAP HANA Enterprise Cloud?
- Project Details
 - Scope
 - Governance
 - Schedule
 - Approach
 - Testing Strategy
 - Cutover Planning
 - Challenges
- WCM HEC System Landscape – Post Migration
- Post HANA Migration Benefits
- Things To Consider
- WCM Roadmap

About Weill Cornell Medicine



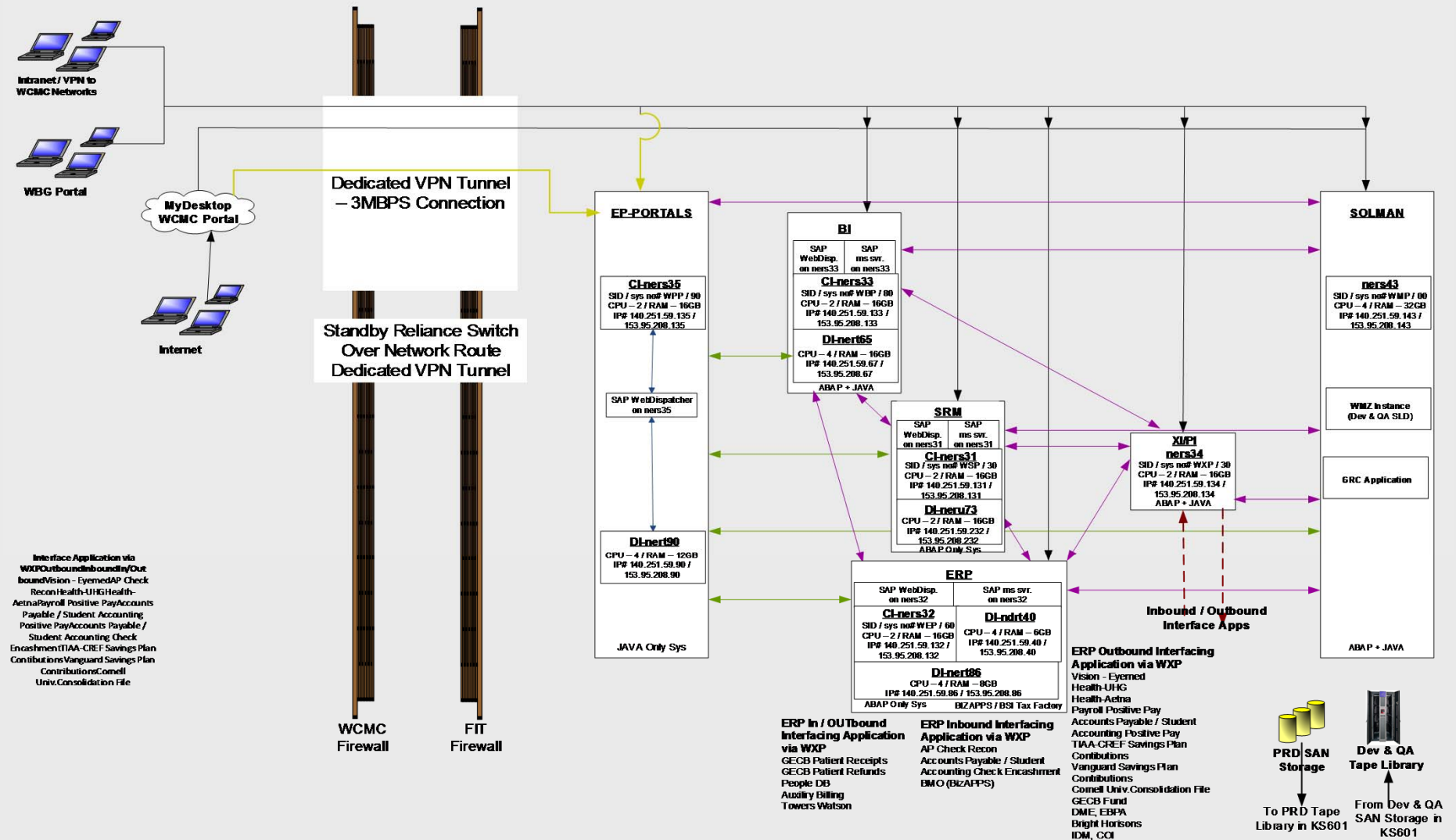
\$ 1.8 Billion
7500 Staff
5000+ Faculty
Live on SAP since
2009

IT Service Stack by Mission



WCM SAP Landscape

WCMC SAP Production Landscape



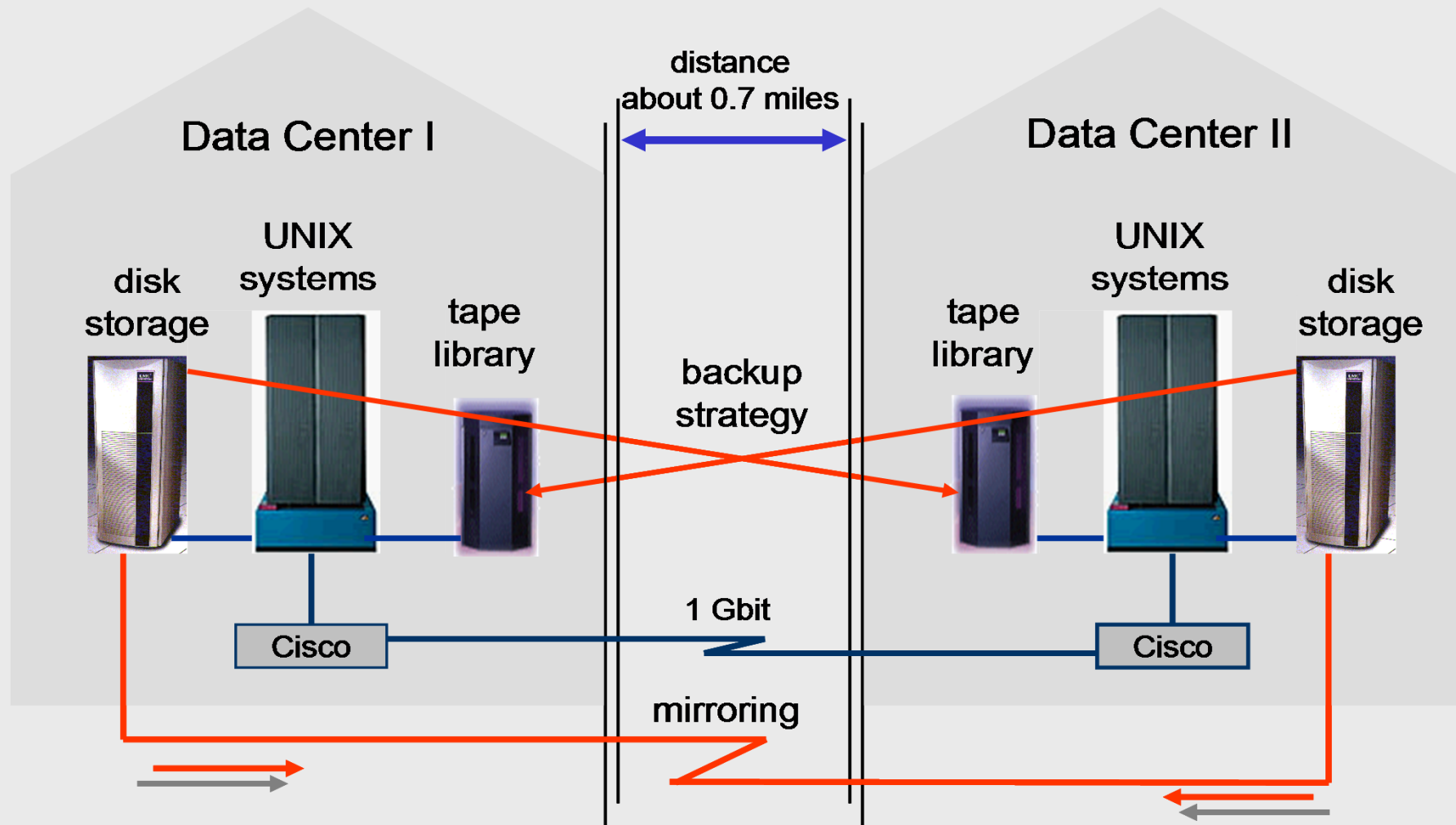
WCM SAP Landscape Contd..

- ECC 6.0 EHP 7
- BW (NW 7.4)
- Enterprise Portal (NW 7.4)
- Supplier Relationship Management (SRM 7.3)
- Process Integration (PI NW 7.4)
- Governance Risk and Compliance (GRC 10.1)
- Business Objects 4.2
- Master Data Management
- Solution Manager 7.0

WCM SAP Landscape Contd..

Total number of Servers / Instances in the SAP Landscape:			
Non-PRD		Production	
System	Servers / Instance	System	Servers / Instance
ERP	6	ERP	3
BW	7	BW	3
SRM	5	SRM	1
PI	3	PI	1
Solman	2	Solman	1
Web.Disp	3	Web.Disp	3
SLD	1	SLD	1
Portal	4	Portal	1
BOBJ	3	BOBJ	1
Total	34	Total	15

WCM SAP Landscape Contd..



WHY?

Why HANA?

- Performance Issues
 - Transaction Processing too slow
 - Data Extracts to BW/BI takes a lot of time
 - Reporting too slow
- High Operational Overhead
- Hardware Revamp
- Contract Renewal
- No Change Management Involved
- Embrace Technology changes for the Future
- Improve User Experience

Why HANA Enterprise Cloud?

- Partnership with SAP Management
- No Basis Team Ramp up
- Customer references for SRM on HANA?
- Standalone Disaster Recovery setup
- Single point of contact - Migration to Product Support/Development



Project Scope

- Setup WCM HANA and ASE System Landscape
- Migrate All SAP Systems from prior hosting provider to SAP HEC
 - OS/DB Migration
 - Validate/Test
- Install New Dimension Components
 - Lumira
 - Gateway Servers for FIORI
 - Data Services
 - HANA DataMart
- Setup standalone Disaster Recovery for all Prod systems

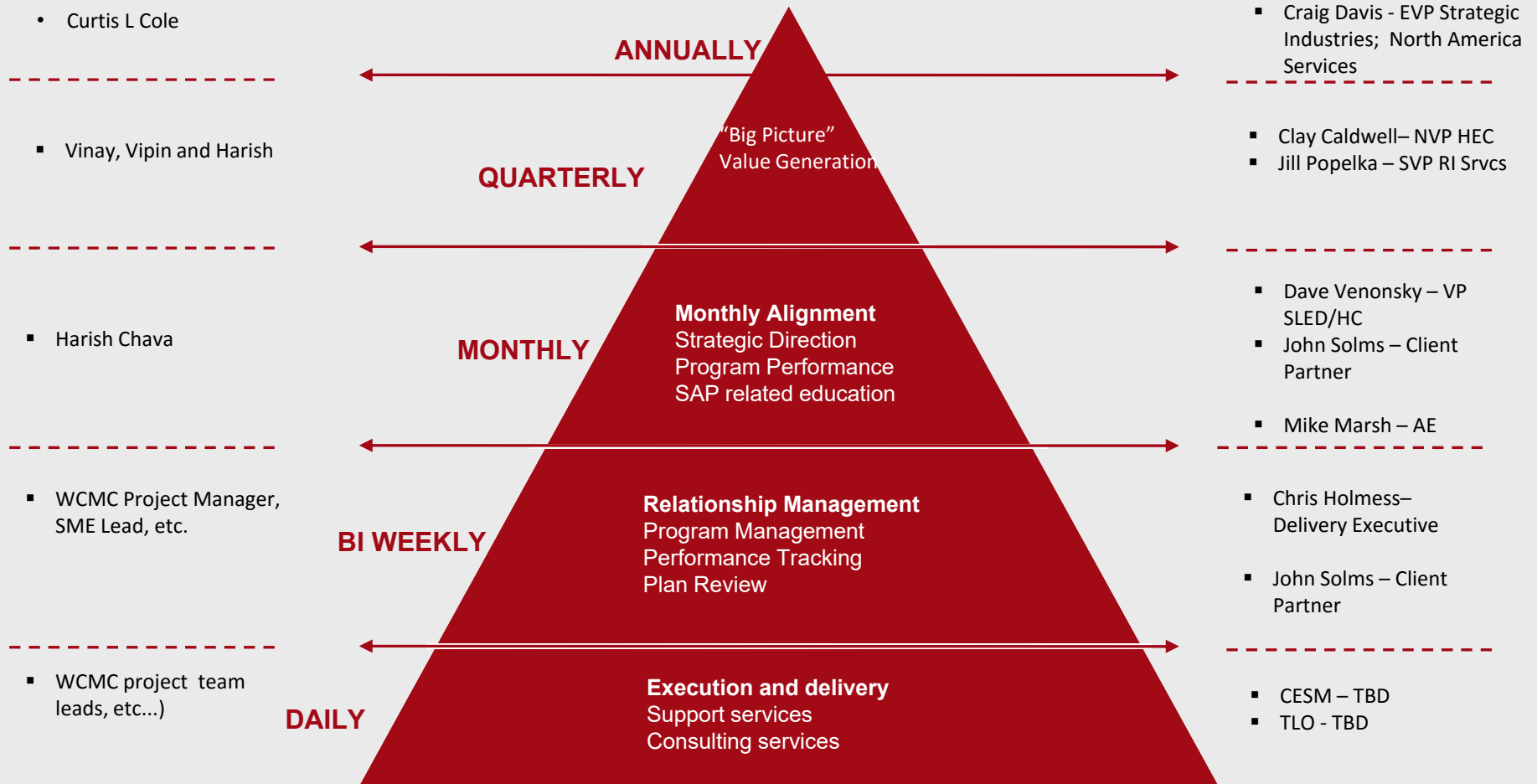
Project Scope Contd..

Migration	Greenfield Implementation
ECC 6.0 EHP 7	Solution Manager 7.1
BW (NW 7.4)	Data Services
Enterprise Portal (NW 7.4)	FIORI
Supplier Relationship Management (SRM 7.3)	Lumira
Process Integration (PI NW 7.4)	DataMart
Governance Risk and Compliance (GRC 10.1)	BSI Tax Factory
Business Objects 4.2	System Landscape Directory
Master Data Management	

Project Scope Contd..

Component	Database	Tier		DR
SAP ECC	HANA	6 (SBX, DEV, QA, PRE-PROD, Prod, TRN)	Migrate	Yes
SAP BW	HANA	6 (SBX, DEV, QA, PRE-PROD, Prod, TRN)	Migrate	Yes
SAP BW-Java	ASE	6 (SBX, DEV, QA, PRE-PROD, Prod, TRN)	Migrate	Yes
Enterprise Portal	ASE	6 (SBX, DEV, QA, PRE-PROD, Prod, TRN)	Migrate	Yes
SAP SRM	HANA	6 (SBX, DEV, QA, PRE-PROD, Prod, TRN)	Migrate	Yes
Process Integration	ASE	4 (SBX, DEV, QA and Prod)	Migrate	Yes
GRC	ASE	4(SBX, DEV, QA and Prod)	Migrate	Yes
Business Objects	ASE	5 (SBX, DEV, QA, Prod and TRN)	Content Migration	Yes
MDM	ASE	2 (Non-PROD, Prod)	Migrate	Yes
Data Services	ASE	3 (DEV, QA and Prod)	Install	Yes
Solution Manager	ASE	2 (Dev and Prod)	Install	Yes
FIORI	ASE	4 (DEV, QA, Prod and TRN)	Install	Yes
Lumira	HANA	6 (SBX, DEV, QA, PRE-PROD, Prod, TRN)	Install	Yes
DataMart	HANA	2 (Dev & Prod)	Install	Yes
DNS		2 (Primary & DR Location)	Setup	Yes

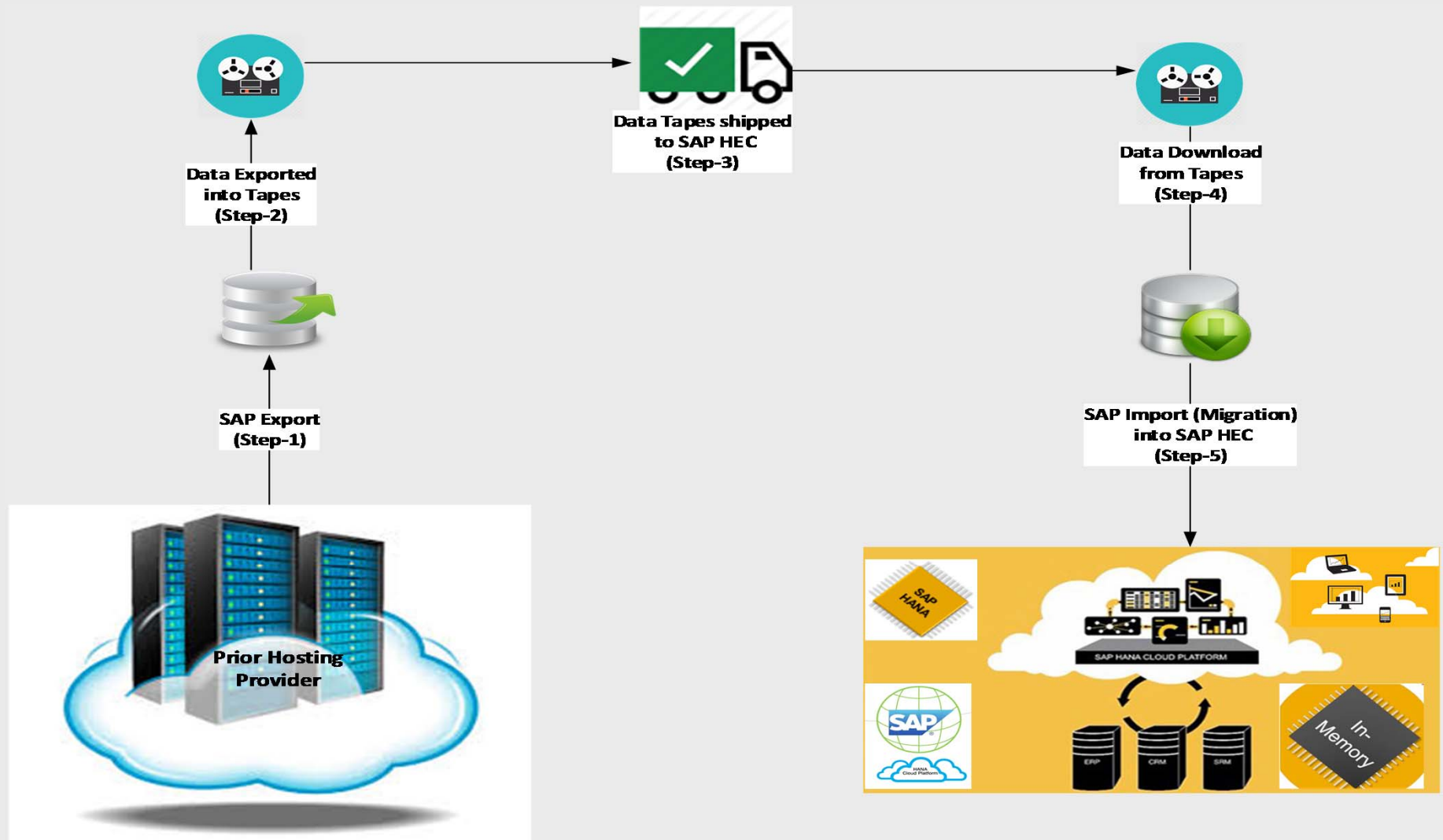
GOVERNANCE MODEL



Project Schedule

Cycle			Oct '14					Nov '14					Dec '14					Jan '15					Feb '15					Mar '15				
			Week																													
			10/13/14	10/20/14	10/27/14	11/03/14	11/10/14	11/17/14	11/24/14	12/01/14	12/08/14	12/15/14	12/22/14	12/29/14	01/05/15	01/12/15	01/19/15	01/26/15	02/02/15	02/09/15	02/16/15	02/23/15	03/02/15	03/09/15	03/16/15	03/23/15	03/30/15					
Project Week			1	2	3	4	5	6	7	8	9	10	11	12	13	14	15	16	17	18	19	20	21	22	23	24	25					
OS/DB Migration by SAP																																
SBX - Cycle 1	SAP+WCMC	Project Prep/HEC Prep																														
	SAP	Migration to HEC																														
	WCMC+SAP	Integration+Code Remediation																														
	WCMC+SAP	Technical Validation																														
	WCMC	Functional Testing																														
DEV - Cycle 2	SAP+WCMC	Project Prep/HEC Prep																														
	SAP	Migration to HEC																														
	WCMC+SAP	Post Migration+Code Remediation																														
	WCMC+SAP	Technical Validation																														
	WCMC	Functional Testing/Validation																														
QAS - Cycle 3	SAP+WCMC	HEC Prep																														
	SAP	Migration to HEC																														
	WCMC+SAP	Post Migration+ Integration																														
	WCMC+SAP	Technical Validation																														
	WCMC	UAT/Regression Testing																														
TRN - Cycle 4 (*Only ERP, SRM & EP)	SAP+WCMC	HEC Prep																														
	SAP	Migration to HEC																														
	WCMC+SAP	Integration between ERP, SRM,EP																														
	WCMC+SAP	Technical Validation																														
Mock - Cycle 5	SAP+WCMC	Project plan validation & HEC Prep																														
	SAP	Migration to HEC on PRD Hardware																														
	WCMC+SAP	Integration Validation																														
	WCMC+SAP	Testing																														
PRD - Cutover	SAP+WCMC	HEC Prep/validation before cutover																														
	SAP+WCMC	Final Prep																														
	SAP	Migration Cutover																														
	SAP+WCMC	Validation + handoff to Project Team																														
Post Go-Live Suport	SAP	Support																														

Migration Approach



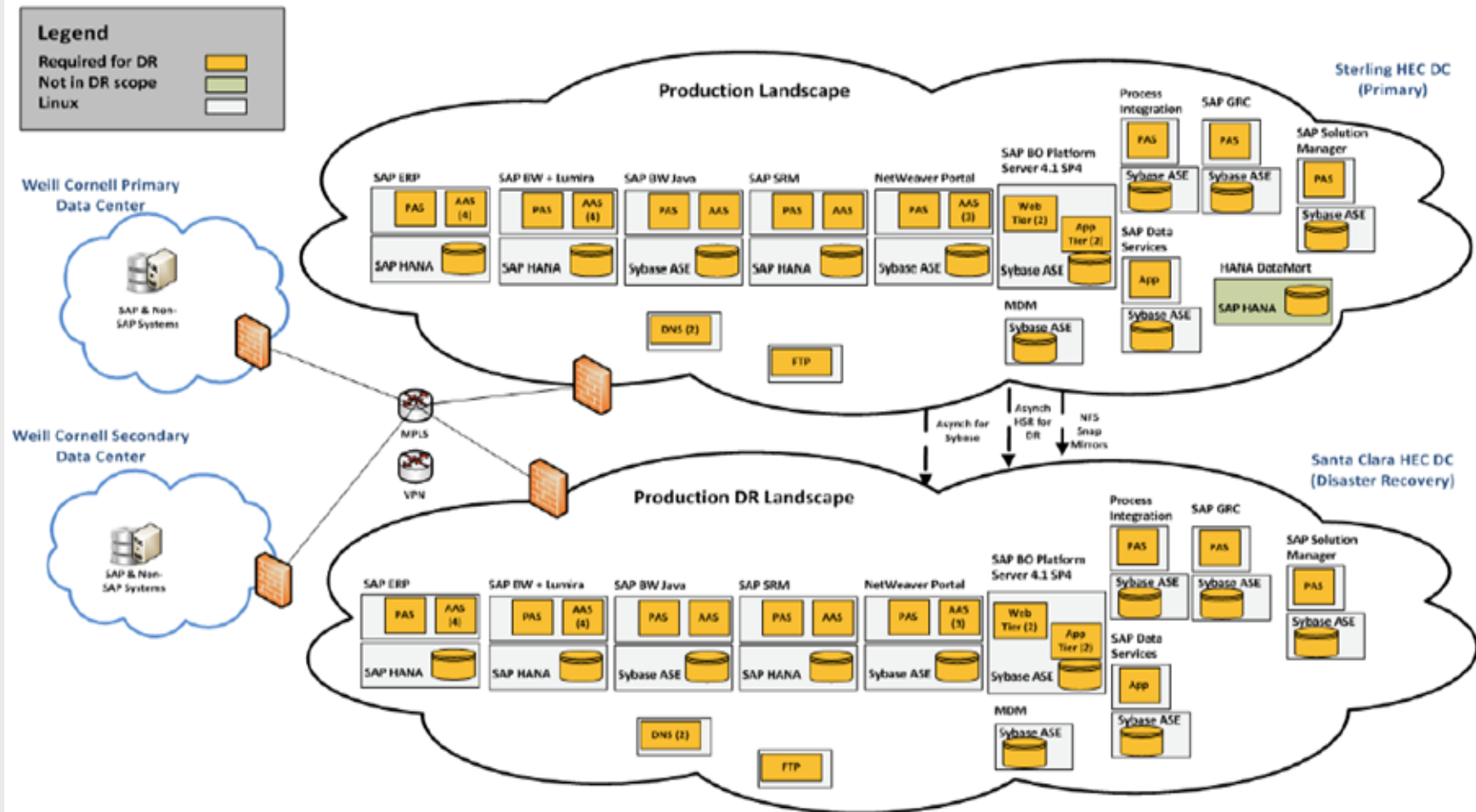
Testing Strategy

Testing Cycle	Environment	Responsible
Unit Testing - First Round	Sandbox	Testing Team/BA's
Unit Testing - Second Round	Development	Testing Team/BA's
Integration Testing	Quality	Testing Team/BA's
User Acceptance Testing	Quality	SME's
Load/Stress testing	Mock/Prod	Testing Team/BA's

High Level Cutover Milestones

Milestone	Start Time	End Time
Go/No-Go Meeting	03/24/2015 09:00	03/24/2015 10:00
Lock All End Users	03/25/2015 17:00	03/25/2015 17:15
Pre Checks and Pre Migration Activities	03/25/2015 17:15	03/26/2015 02:00
Downtime / Migration	03/26/2015 02:00	03/28/2015 21:00
Technical Validation Including the Fixes and Transports	03/28/2015 21:00	03/29/2015 8:00
Functional Validation (Uncommitted Transactions)	03/29/2015 08:00	03/29/2015 10:00
SME/User Validation Qatar (Committed Transactions)	03/29/2015 07:30	03/29/2015 11:00
SME/User Validation NY (Committed Transactions)	03/29/2015 10:00	03/29/2015 13:30
Go/No-Go Meeting	03/29/2015 14:00	03/29/2015 14:30
BI Batch Jobs	03/29/2015 14:00	03/29/2015 18:00
SME/User Validation NY (BI Report)	03/29/2015 18:00	03/29/2015 21:00
System Release to Qatar SMEs	03/29/2015 11:30	03/30/2015 02:00
System Release to Qatar all users	03/30/2015 02:00	
System Release to all Users	03/30/2015 09:00	

SAP HEC System Landscape



Challenges

- Annual upgrade followed by HEC Migration
- Support Pack stack prerequisites
- System ID Changes
- Network Setup
- BI Java not supported on HANA
- Included additional Mock Cycle before Production Migration
- Third Party components support on HANA/ASE (BSI)
- Interface Testing

Post Migration Benefits

➤ Infrastructure

- Availability
- Scalable
- Standalone Disaster Recovery

➤ Performance

- Drastic reduction in Reporting runtime
- 70% Reduction in Data extraction time (Daily Batch)
- 40% Improvements in Payroll processing time

➤ Operational improvement

- Reduction in Batch Monitoring
- Reduction in Batch failures due to hardware resource constraints
- Reduction in Operational support

Post Migration Benefits – Data Extracts

ETL Jobs	Record Count	Pre HANA	Post HANA
Daily	7,386,387	12 Hrs. 06 min	2 Hrs. 38 min
Weekly	2,978,612	12 Hrs. 38 min	1 Hrs. 52 min
Ad hoc	424,312	15 Hrs. 22 min	26 min

Things To Consider

- Detailed Vendor Evaluation
- Management Ownership
- Impact Analysis
- Extensive Project Planning
- Architecture Design
- Define Roles Upfront
- Timely Decisions
- Coordination between all parties involved
- Appropriate Checklists
- Document Issues and Resolutions

WCM Roadmap

- Evolve the Analytic landscape
- FIORI
- Personas
- Lumira Rollout
- SuccessFactors (Implementation Just started with SAP)
- SAP Budget Planning for Public Sector POC (LSI)
- Epic on HANA
- S/4 Proof of Concept (SAP)
- Master Data Management & Governance
- Concur

